

141-61

# NORTHERN BOULEVARD



CORNER OF NORTHERN & PARSONS BOULEVARDS  
FLUSHING | NY



RENDERING



# 141-61

# NORTHERN BOULEVARD

CORNER OF NORTHERN & PARSONS BOULEVARDS  
FLUSHING | NY

### PROPERTY HIGHLIGHTS

- Best retail corner in Northern Queens (Parsons & Northern) with over 60,000 vehicles per day
- New development with 75 luxury residential units & up to 20,000 SF total (2nd & 3rd Floors) with an additional 32,000 SF of medical & community space
- 200+ on-site parking spaces
- 700+ new residential units under development in the immediate area

RENDERING



### SIZE:

Up to 16,000 SF - Ground (divisible)  
Up to 20,000 SF - 2nd & 3rd Floors (divisible)

### FRONTAGE:

150' on Northern Blvd.  
200' on Parsons Blvd.

### TRANSPORTATION:

7

### NEIGHBORS:



CONTACT OUR BROKERS FOR MORE INFORMATION:

**GEORGE SKALIARINIS**

GeorgeS@ksrny.com

**347.844.0183**

**MARK GALLUCCI**

Mgallucci@ksrny.com

**718.551.5387**

All information supplied in this marketing presentation and/or flyer is from sources deemed reliable and is furnished subject to errors, omissions, modifications, removal of listings from sale/lease and to any listing condition. Any square footage, dimensions, floor plans and/or technical data set forth are approximations and are subject to further elaboration/confirmation.

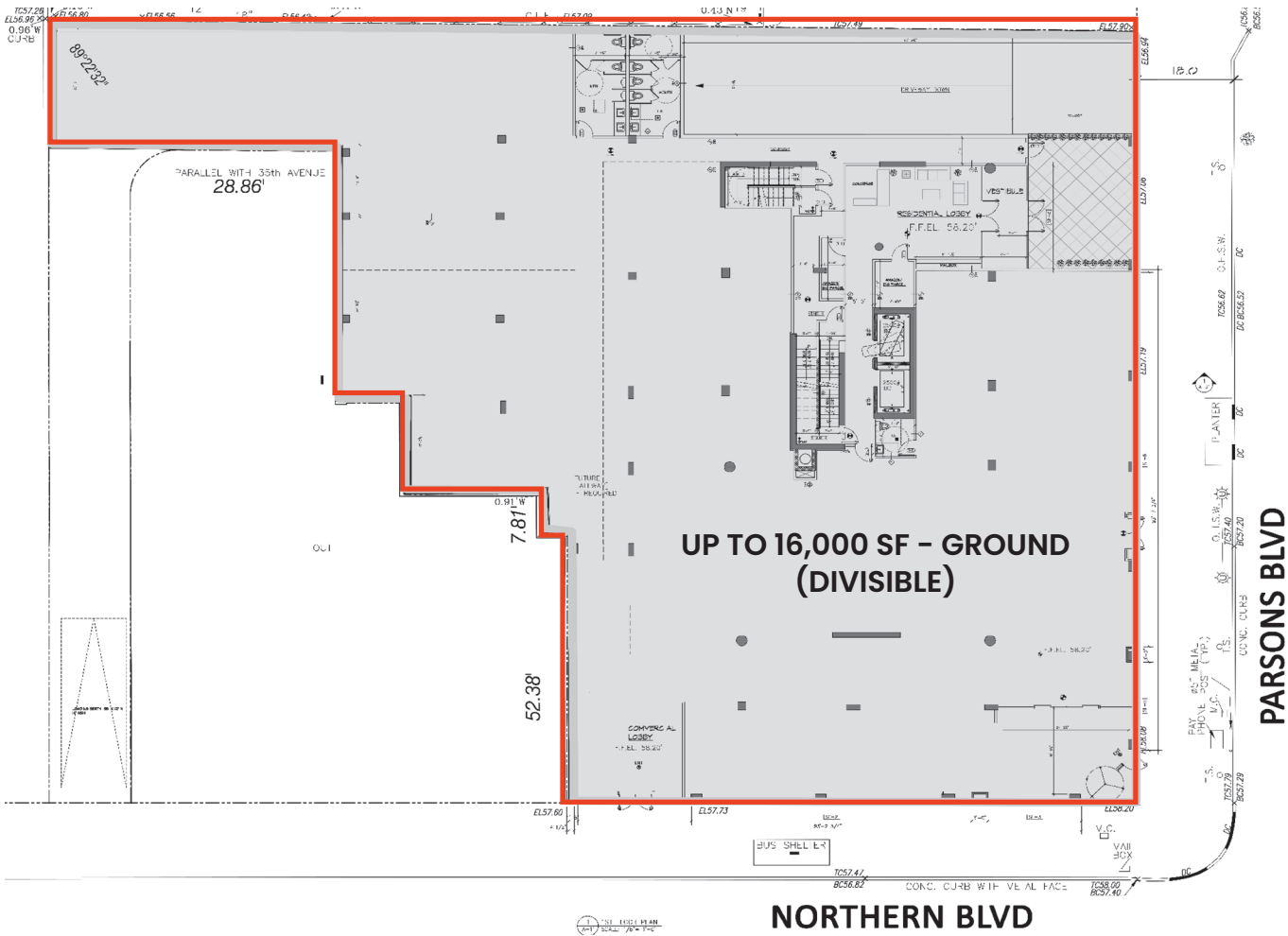


# 141-61

# NORTHERN BOULEVARD

BETWEEN NORTHERN & PARSONS BOULEVARDS  
FLUSHING | NY

**GROUND FLOOR**



**UP TO 16,000 SF - GROUND (DIVISIBLE)**

CONTACT OUR BROKERS FOR MORE INFORMATION:



All information supplied in this marketing presentation and/or flyer is from sources deemed reliable and is furnished subject to errors, omissions, modifications, removal of listings from sale/lease and to any listing condition. Any square footage, dimensions, floor plans and/or technical data set forth are approximations and are subject to further elaboration/confirmation.

**GEORGE SKALIARINIS**  
GeorgeS@ksrny.com

**347.844.0183**

**MARK GALLUCCI**  
Mgallucci@ksrny.com

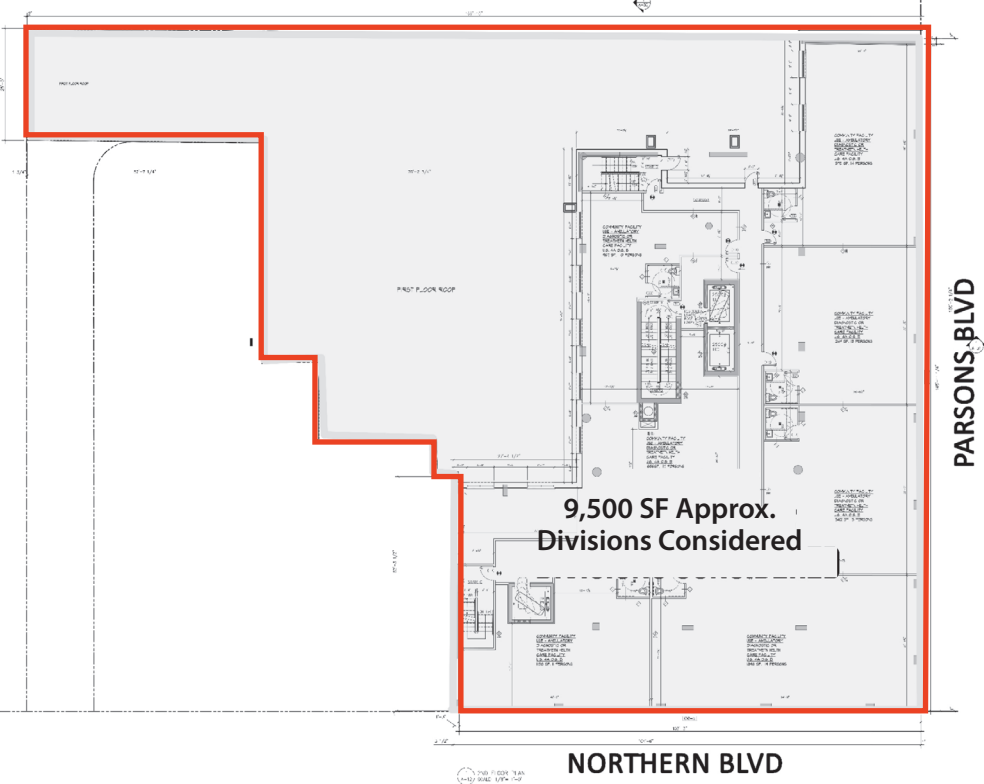
**718.551.5387**

# 141-61 NORTHERN BOULEVARD

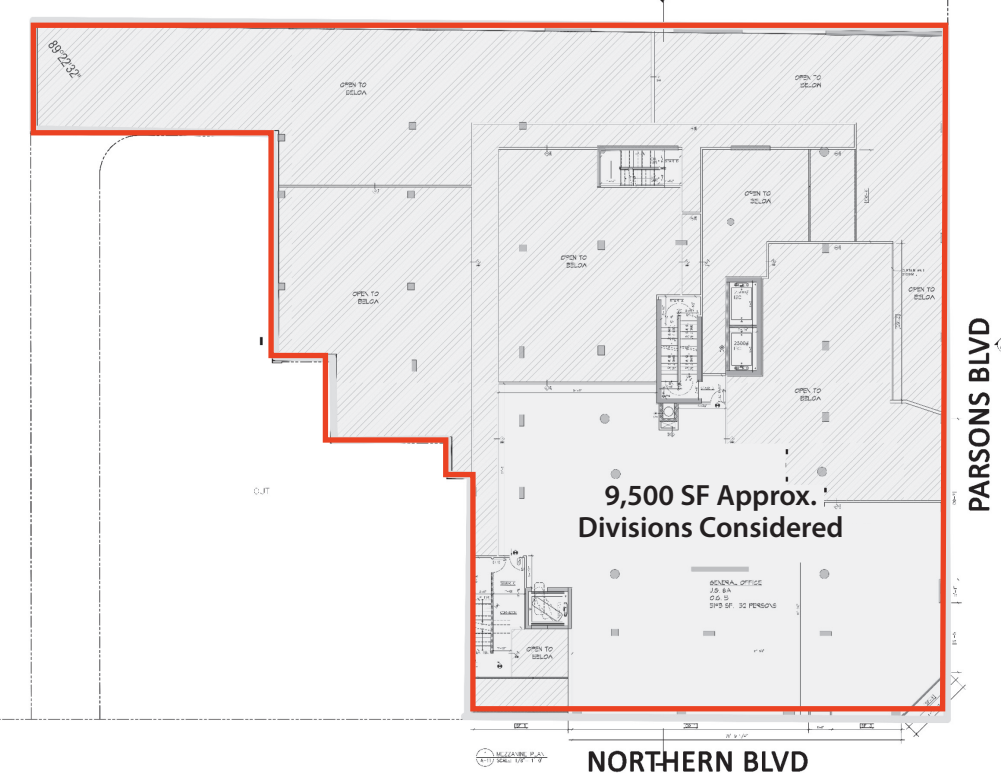
BETWEEN NORTHERN & PARSONS BOULEVARDS  
FLUSHING | NY

**MEDICAL / COMMUNITY SPACES**  
**UP TO 20,000 SF TOTAL**

**2ND FLOOR**



**3RD FLOOR**



CONTACT OUR BROKERS FOR MORE INFORMATION:



All information supplied in this marketing presentation and/or flyer is from sources deemed reliable and is furnished subject to errors, omissions, modifications, removal of listings from sale/lease and to any listing condition. Any square footage, dimensions, floor plans and/or technical data set forth are approximations and are subject to further elaboration/confirmation.

**GEORGE SKALIARINIS**  
GeorgeS@ksrny.com  
**347.844.0183**

**MARK GALLUCCI**  
Mgallucci@ksrny.com  
**718.551.5387**



141-61

# NORTHERN BOULEVARD

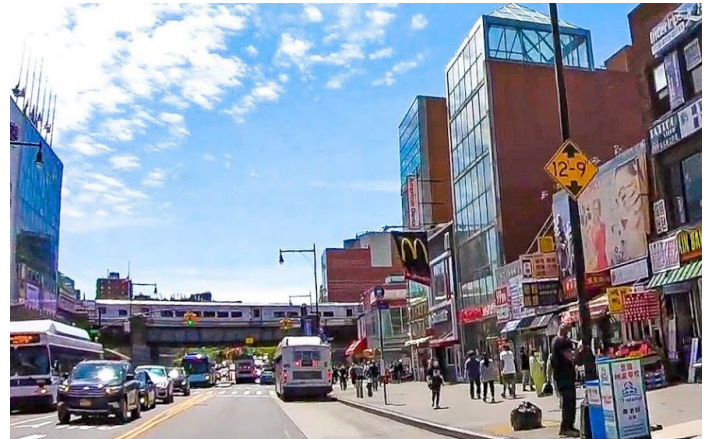
BETWEEN NORTHERN & PARSONS BOULEVARDS  
FLUSHING | NY



CITIFIELD



FLUSHING MEADOWS PARK



FLUSHING MARKET AREA



**132,517**  
ESTIMATED  
POPULATION WITHIN  
A 1 MILE RADIUS



**32,771**  
ESTIMATED DAYTIME  
POPULATION WITHIN  
A 1 MILE RADIUS



**2.1 mi**  
NEW YORK METS  
BASEBALL  
WILLETS POINT



**3.5 mi**  
QUEENS  
BOTANICAL GARDEN  
& OTHER PARKS



All information supplied in this marketing presentation and/or flyer is from sources deemed reliable and is furnished subject to errors, omissions, modifications, removal of listings from sale/lease and to any listing condition. Any square footage, dimensions, floor plans and/or technical data set forth are approximations and are subject to further elaboration/confirmation.

CONTACT OUR BROKERS FOR MORE INFORMATION:

**GEORGE SKALIARINIS**  
GeorgeS@ksrny.com

**347.844.0183**

**MARK GALLUCCI**  
Mgallucci@ksrny.com

**718.551.5387**