

1114 E
PIKE ST
SUITE
200

12
& P

12TH & PIKE
BUILDING

Madrona

BUILDING INFORMATION

ADDRESS: 1114 E PIKE STREET
SUITE 200, SEATTLE, WA 98122

AVAILABLE: 2,581 RENTABLE
SQUARE FEET

FURNISHED

DESCRIPTION

FORMER CAR DEALERSHIP
BUILDING CONSTRUCTED IN
1917 ON THE CORNER OF 12TH
AND PIKE. NOW HOME TO
OFFICE, RETAIL AND
RESTAURANT SPACE.

FEATURES

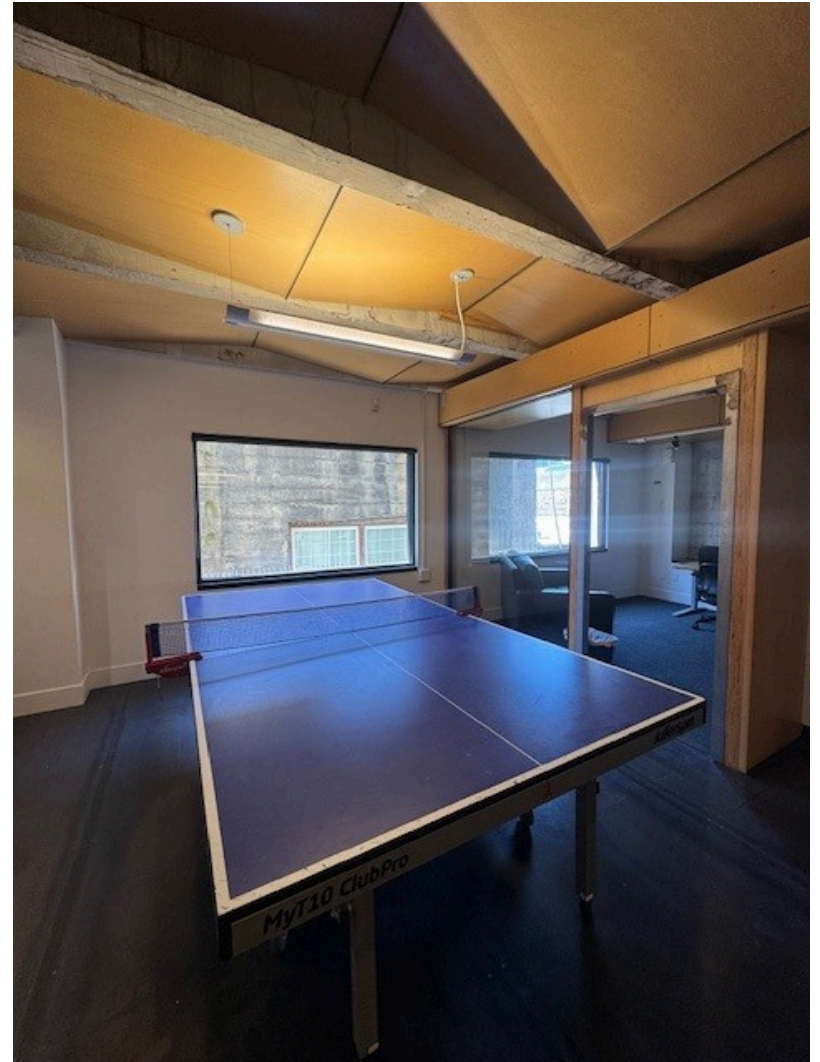
24 HOUR CONTROLLED
ACCESS, AIR CONDITIONING,
BICYCLE STORAGE,
PARTITIONED OFFICES



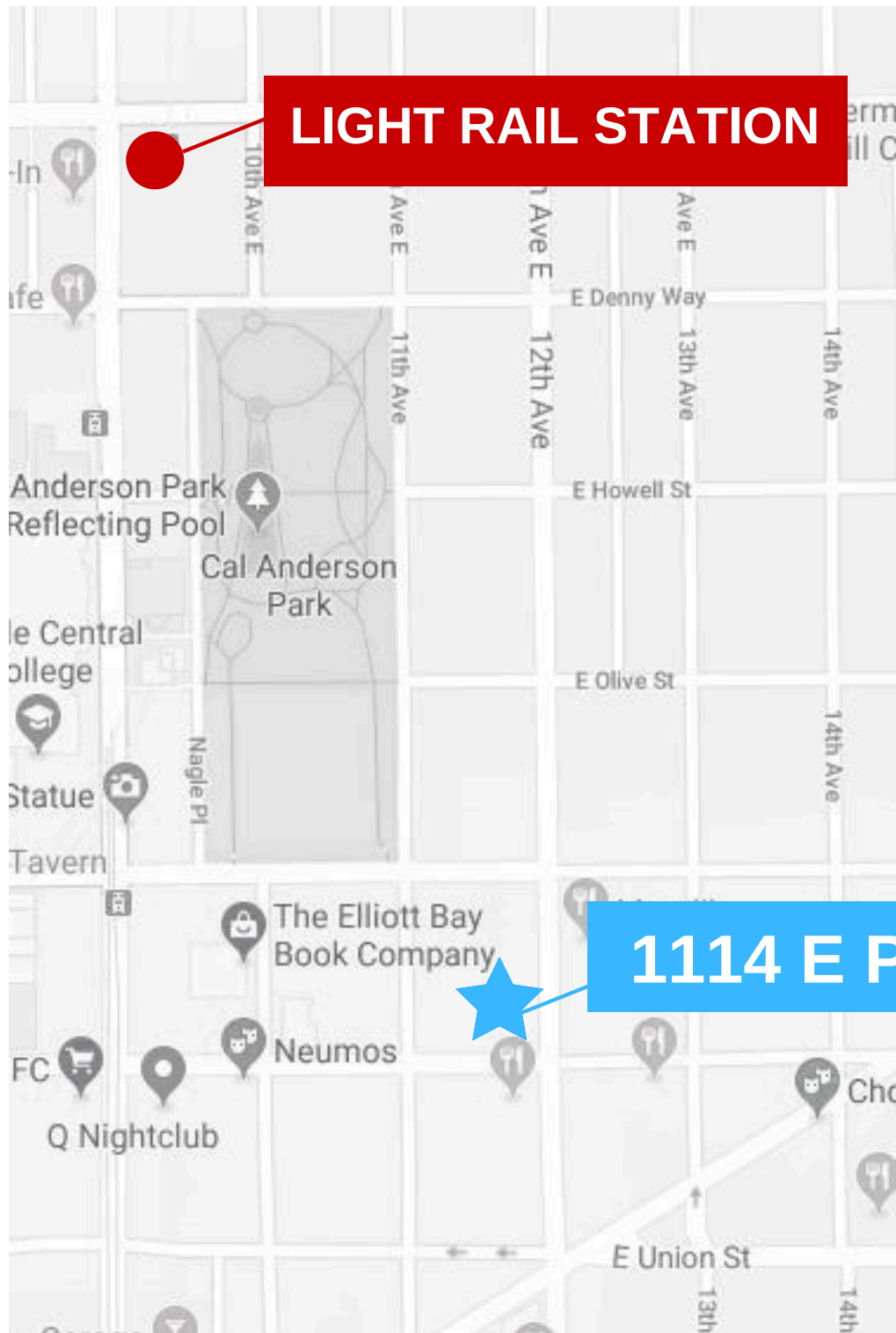


Madrona
Real Estate Services, LLC









ACCESSIBILITY

**LESS THAN .5 MILE TO
CAPITOL HILL STATION**

Walk Score
98

Transit Score
81

Bike Score
90

**FOR MORE
INFORMATION
PLEASE CONTACT**

ANDREA AUGUSTINE

ANDREAA@MADRONAREALESTATE.COM
206.856.0250

BRAD AUGUSTINE

BRADA@MADRONAREALESTATE.COM
206.538.2950