

# 3101 Park Boulevard

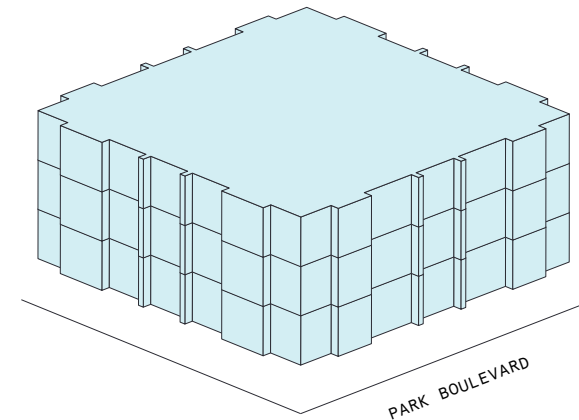
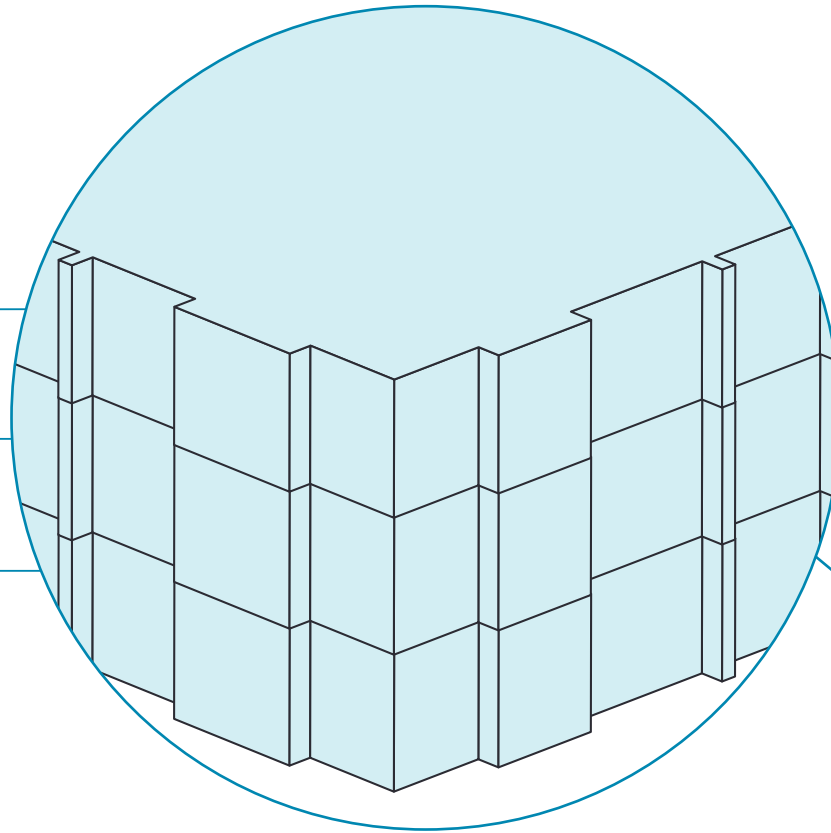
## Space availability summary

WeWork @ 3101 Park Boulevard  
Palo Alto, CA

**wework**

[VIEW VIRTUAL TOUR](#)

3rd Floor 16,615 RSF  
2nd Floor 13,443 RSF  
1st Floor 9,998 RSF



**40,056 RSF**

TOTAL WEWORK RSF

## 3101 Park Boulevard

At a glance

Workspaces designed for productivity and creativity with flexible size & term

Dedicated, private offices available from 368 to 16,615 RSF

Move-in ready offices furnished & wired

**3**

TOTAL BUILDING FLOORS

**40,140**

TOTAL BUILDING SQ FT

All dimensions are approximate and subject to variances. It is your obligation to independently verify the particulars of the property. WeWork reserves the right to make changes.





Natural materials, colorful patterns, and touches of greenery bring this workspace to life.



Rich millwork throughout the space—seen here in the game room's built-in shelving—gives common areas warmth and polish.

## Modern, light-filled workspace in Palo Alto

---

3101 Park Boulevard is a three-story building in Palo Alto's Ventura neighborhood—the birthplace of Silicon Valley. Built in 1985, this ultra-modern building features polished concrete floors and oversized windows that flood the space with natural light. All three floors of 3101 Park Boulevard are dedicated to WeWork and house a mix of sleek private offices, art-filled lounges, and spacious meeting rooms to spark creativity, productivity, and collaboration.





Custom landscape photography stands out against the space's bright white walls and minimalist furnishings.



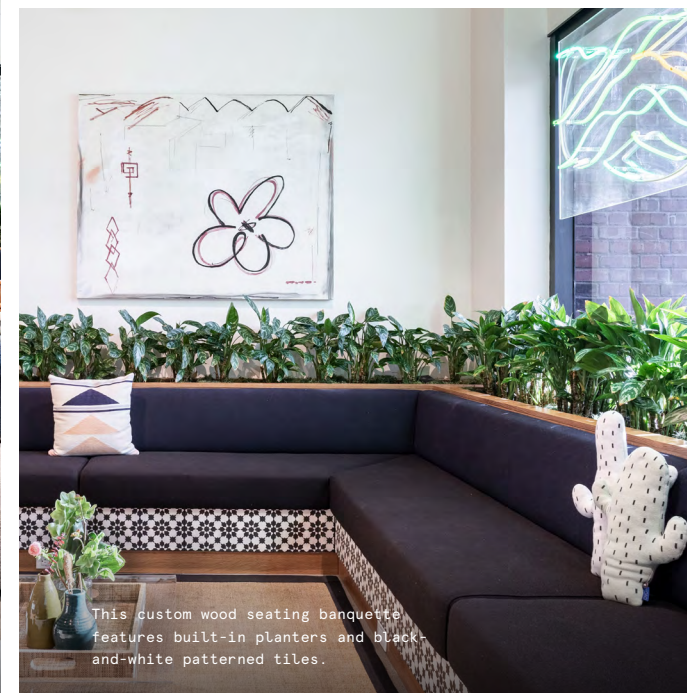
The entry vestibule's hand-painted line art mural pays homage to the bright California sunshine.



# Bright, open and inviting

3101 Park Boulevard features a distinctly mod-meets-industrial design. With polished concrete floors, oversized windows, and pops of bright color and pattern, this sun-soaked space marries comfort, creativity, and polished elegance.

- Industrial details—like whitewashed exposed ductwork and concrete flooring—softened with custom oversized sisal rugs, birchwood tabletops and counters, and splashes of warm color
- Elevated millwork is featured in built-in shelving and custom banquette seating
- Locally sourced terracotta and patterned tiles add visual interest and complement hand-glazed ceramic tile featured the community pantry





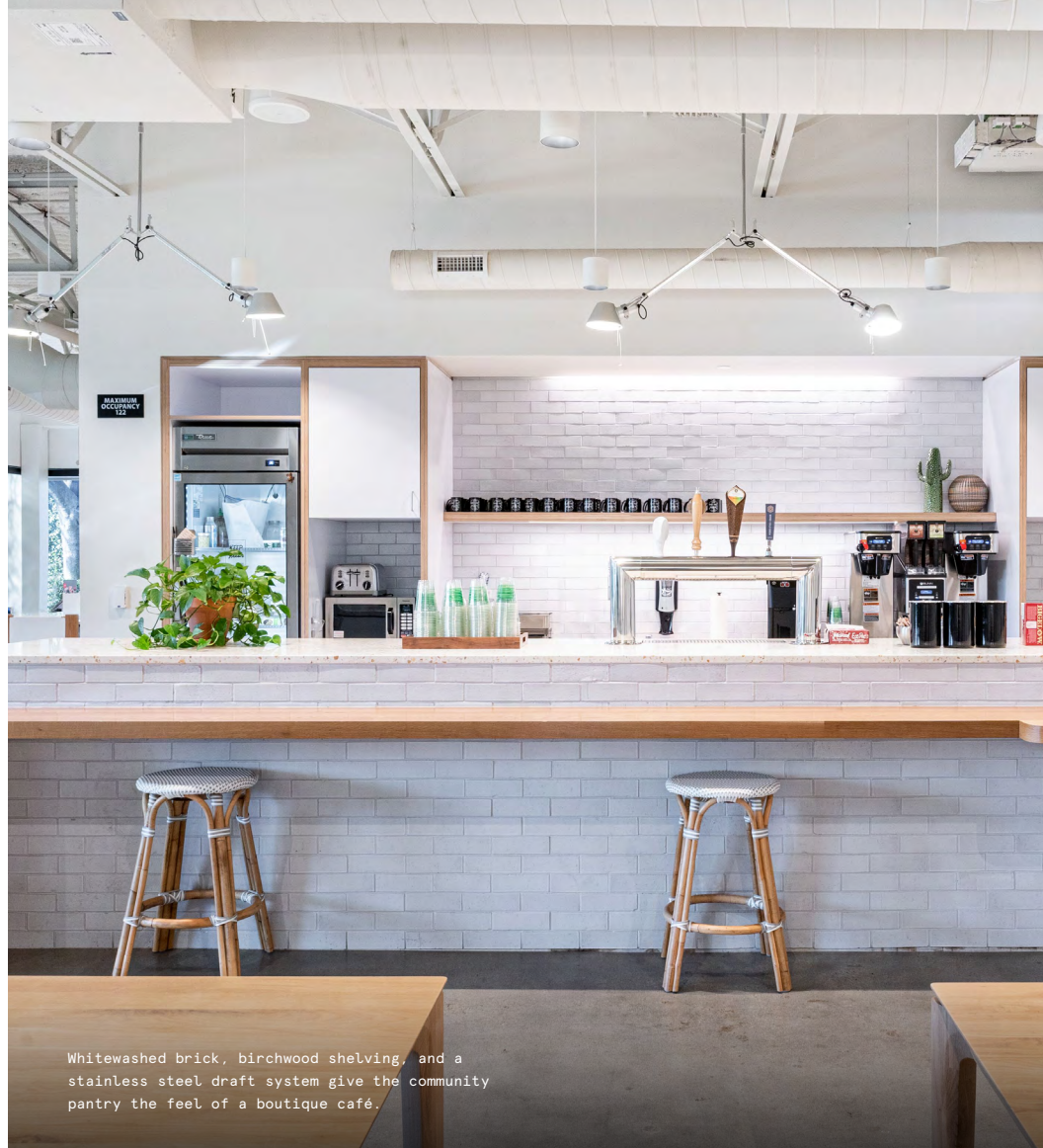


A custom neon palm tree greets members and guests at the terracotta-clad Community Desk.

## On-site amenities

---

- Business-class printers
- Stocked pantry
- US mail drop
- On-site staff
- Meeting rooms



Whitewashed brick, birchwood shelving, and a stainless steel draft system give the community pantry the feel of a boutique café.

- New parent's room
- Phone booths
- Event space
- Classroom space
- Gender-neutral restrooms
- Dog-friendly spaces
- Bicycle storage
- On-site parking

# Building specifications

---



## Hours of operation

---

Monday – Friday: 8am–5pm



## Security

---

24/7 CCTV monitoring



## HVAC

---

Monday – Friday: 6am–6pm



## Building history

---

Built in 1985  
Renovated in 2019  
Designed by B.H. Bocook,  
Architect, Inc.  
Developed by Vance Brown



## Ceiling heights

---

1st floor: 14 feet slab-to-slab  
2nd–3rd floor: 12 feet slab-to-slab



## Fire strategy

---

Fully-sprinklered floors



## Building size

---

3 stories  
40,140 SF



## Elevators

---

1 passenger elevator



# The best of Ventura at your doorstep

Located in Palo Alto's Ventura neighborhood and just a short walk from Stanford University's Research Park, 3101 Park Boulevard is surrounded by bars, restaurants, and cultural attractions galore. Members can grab authentic Cuban eats at famed La Bodeguita del Medio, explore Palo Alto's art galleries, or stroll the paved walking trails at The Dish—a nearby public park named for the old Stanford research radiotelescope it houses. Commuting is also a breeze, with on-site parking and Caltrain at California Avenue Station just a 5-minute walk away.

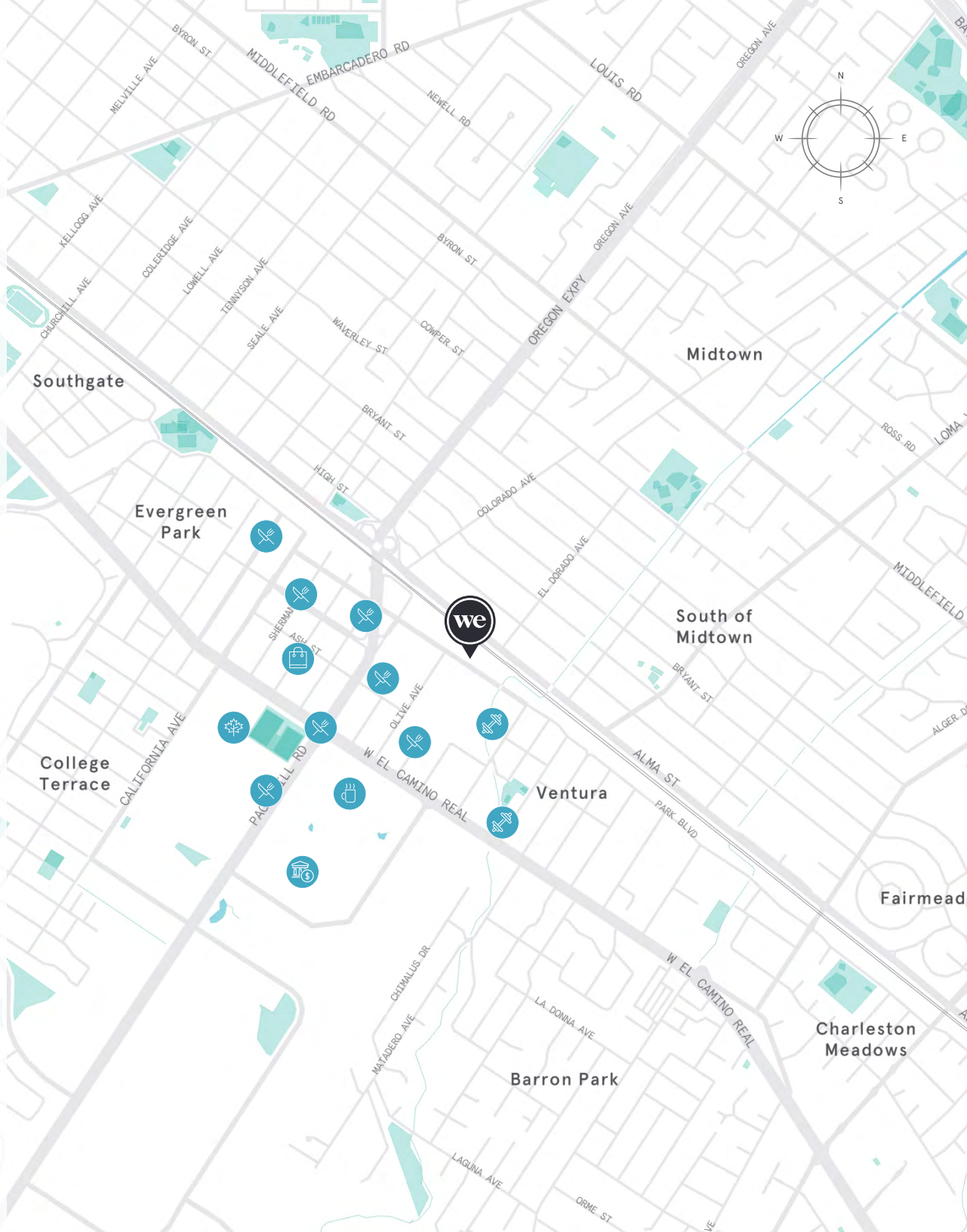
## Distance to WeWork

Caltrain Station - California Avenue



Walk

5 min





# 1st Floor

9,998 RSF

4

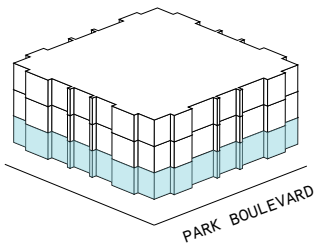
MEETING ROOM(S)

6

SHARED WORKSPACE(S)

## LEGEND

- MEETING ROOM
- SHARED WORKSPACE
- DEDICATED SPACE





# 2nd Floor

13,443 RSF

9

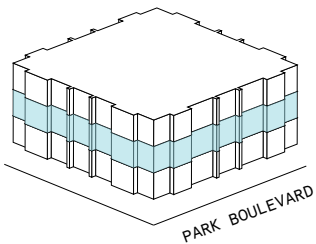
MEETING ROOM(S)

5

SHARED WORKSPACE(S)

## LEGEND

- MEETING ROOM
- SHARED WORKSPACE
- DEDICATED SPACE





# 3rd Floor

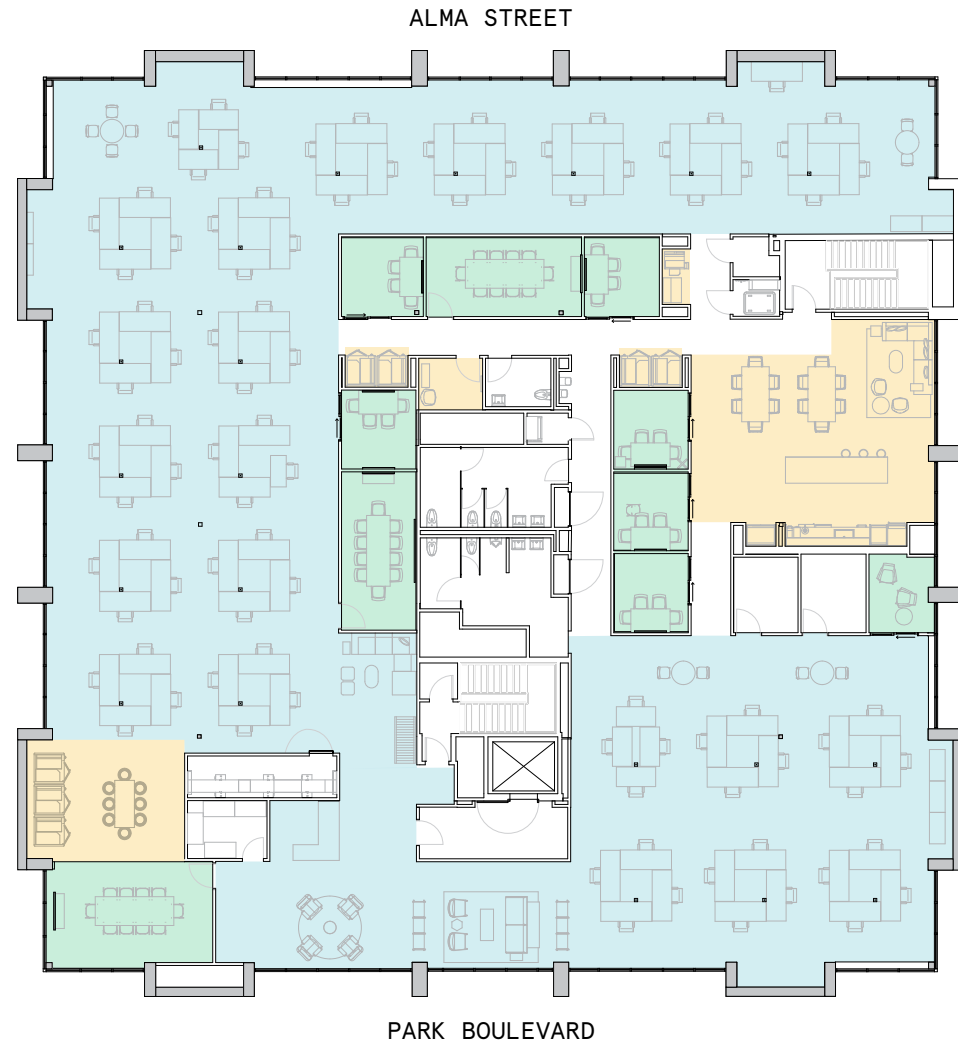
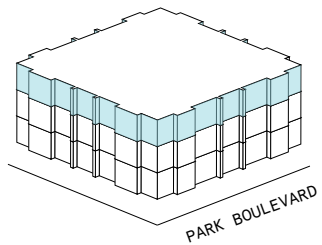
16,615 RSF

10  
MEETING ROOM(S)

5  
SHARED WORKSPACE(S)

## LEGEND

- MEETING ROOM
- SHARED WORKSPACE
- DEDICATED SPACE





# Contact

---

Complete the form [linked here](#) to book a tour or connect with one of our team members.



© 2023 WeWork. The WeWork trademark and related logos are the property of WeWork Companies LLC. Any reference to third-party names are for reference and informational purposes only and should not be considered an endorsement or association of WeWork or vice versa. Photographs contained herein may be representative examples of various WeWork locations and do not necessarily depict the WeWork location referenced. While reasonable efforts have been made to check the accuracy of the information contained here, WeWork, its officers, employees, directors, and representatives, make no warranty, express or implied, regarding the accuracy of the information and disclaim any liability arising from the use of the information contained herein. All dimensions are approximate and subject to variances. It is your obligation to independently verify the particulars of the property. WeWork reserves the right to make changes.