



8330 Allison Pointe Trail

Indianapolis, IN 46250

FOR SUBLEASE | Up to 31,753 SF available

Property Highlights

- 31,753 SF available for sublease on two floors
- Term expires September 30, 2025
- \$18.50/SF
- Class A building
- Upgraded finishes
- 288 surface parking spaces
- Building signage available
- Card access security system
- Located in the Allison Pointe office park
- Half a mile to I-465/Allisonville Road interchange
- 20 minutes to downtown and the Indianapolis International Airport

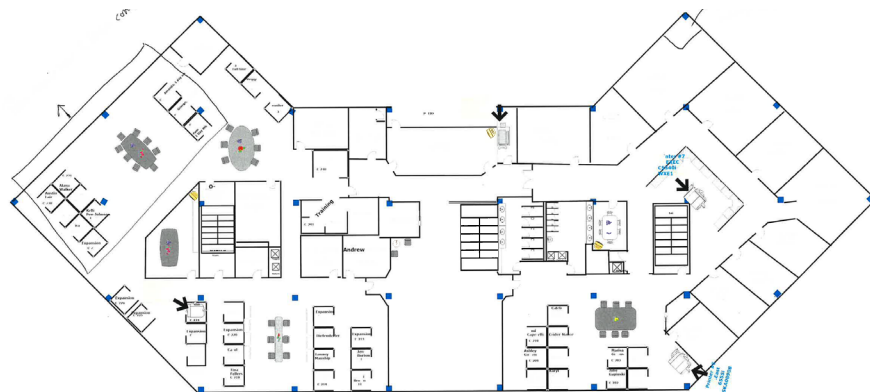


Floorplans

Lower level



Upper level





RETAIL
2 Simon Property Group Malls

RESTAURANTS
+55 options within 5 miles

HOTELS
8 Hotels within 2 miles

Location Highlights

- Easy access to I-465 and Allisonville Road
- Positioned in the highly sought-after Keystone submarket
- Situated between the heavy retail corridor of 82nd, near the amenity-rich Castleton Square Mall

For leasing information, contact:

John Robinson

+1 317 810 7172

john.robinson@jll.com



Although information has been obtained from sources deemed reliable, neither Owner nor JLL makes any guarantees, warranties or representations, express or implied, as to the completeness or accuracy as to the information contained herein. Any projections, opinions, assumptions or estimates used are for example only. There may be differences between projected and actual results, and those differences may be material. The Property may be withdrawn without notice. Neither Owner nor JLL accepts any liability for any loss or damage suffered by any party resulting from reliance on this information. If the recipient of this information has signed a confidentiality agreement regarding this matter, this information is subject to the terms of that agreement.
©2023. Jones Lang LaSalle IP. All rights reserved.