

# FOR LEASE EVERHART CENTER



★ COMMERCIAL & INDUSTRIAL REAL ESTATE ★

4634 EVERHART RD | CORPUS CHRISTI, TX 78411



## PROPERTY DESCRIPTION

Prime neighborhood retail center located in a well-established Corpus Christi submarket. The property offers excellent frontage and visibility along Everhart Road, one of the city's major commercial thoroughfares. The center serves the primary retail trade area north of S.P.I.D. and benefits from close proximity to a strong mix of national retailers, financial institutions, and neighborhood service providers, creating consistent traffic and long-term demand.

## PROPERTY HIGHLIGHTS

- Hard Corner - Signaled Intersection
- Established Retail Center - High Traffic Counts
- Pylon Signage Available

## OFFERING SUMMARY

Lease Rate:	\$18.00 SF/yr (NNN)
Available SF:	9,020 / 2,800 SF
Lot Size:	33,435 SF
Building Size:	9,020 SF

DEMOGRAPHICS	0.3 MILES	0.5 MILES	1 MILE
Total Households	287	1,170	4,976
Total Population	758	3,016	12,556
Average HH Income	\$58,781	\$64,105	\$70,693

MARK ADAME, CCIM, SIOR  
mark@joeadame.com  
O: 361.880.5888  
C: 361.813.7245

JOEADAME.COM

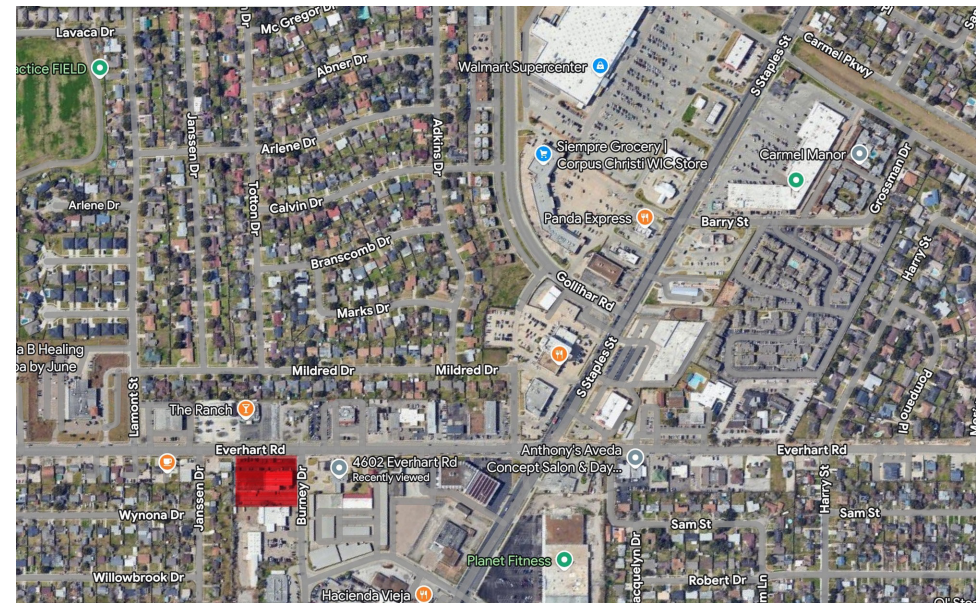
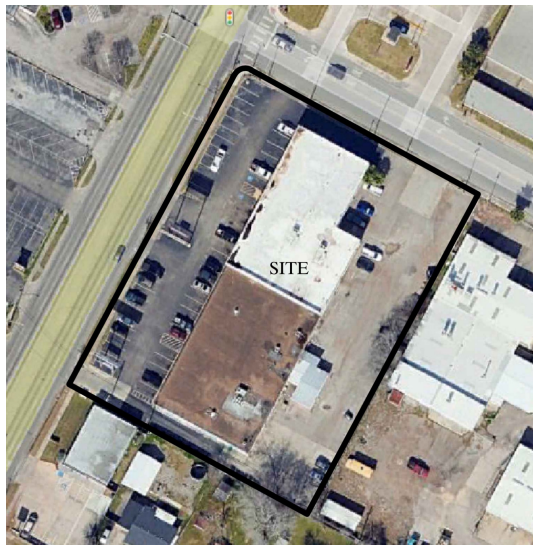
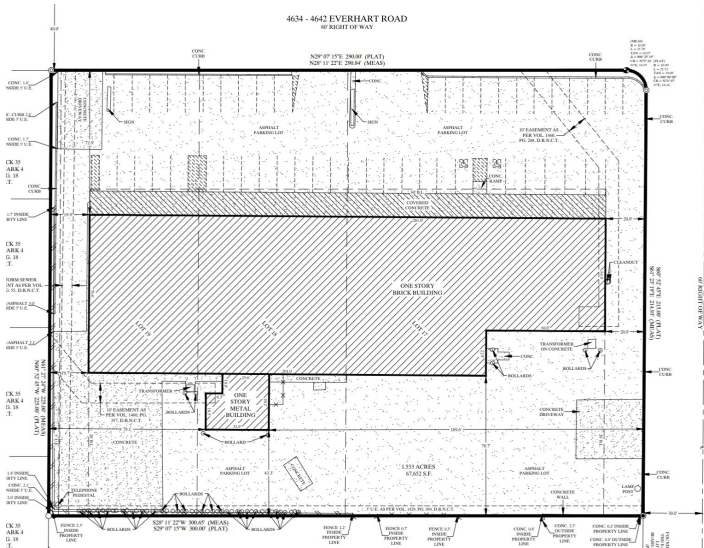
The information contained herein has been obtained from sources we deem reliable. We have no reason to doubt its accuracy, but we do not guarantee it.

# FOR LEASE EVERHART CENTER



★ COMMERCIAL & INDUSTRIAL REAL ESTATE ★

4634 EVERHART RD | CORPUS CHRISTI, TX 78411



MARK ADAME, CCIM, SIOR  
mark@joeadame.com  
O: 361.880.5888  
C: 361.813.7245

JOEADAME.COM

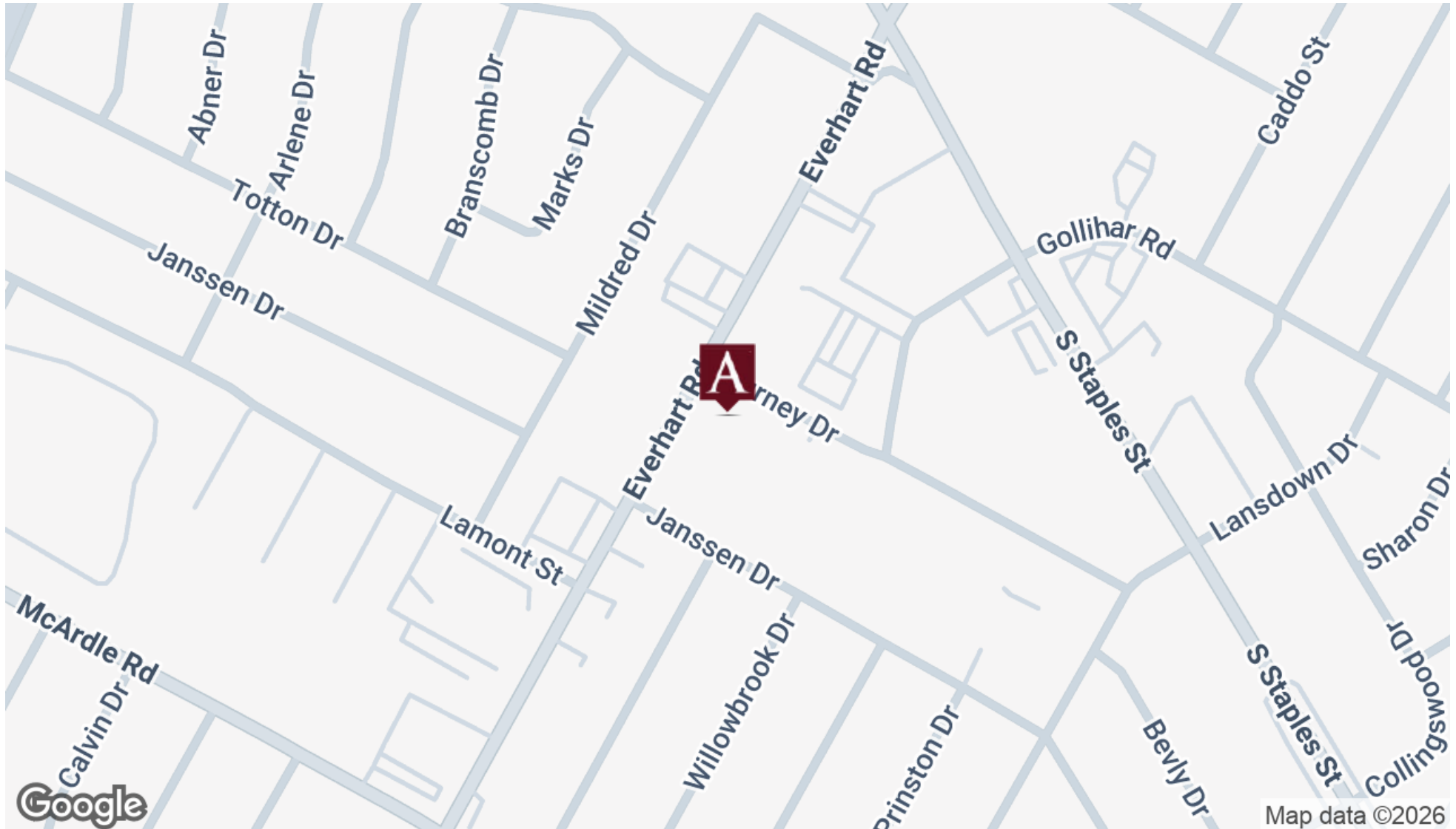
The information contained herein has been obtained from sources we deem reliable. We have no reason to doubt its accuracy, but we do not guarantee it.

# FOR LEASE EVERHART CENTER



★ COMMERCIAL & INDUSTRIAL REAL ESTATE ★

4634 EVERHART RD | CORPUS CHRISTI, TX 78411



MARK ADAME, CCIM, SIOR  
mark@joeadame.com  
O: 361.880.5888  
C: 361.813.7245

JOEADAME.COM

The information contained herein has been obtained from sources we deem reliable. We have no reason to doubt its accuracy, but we do not guarantee it.

# FOR LEASE EVERHART CENTER



★ COMMERCIAL & INDUSTRIAL REAL ESTATE ★

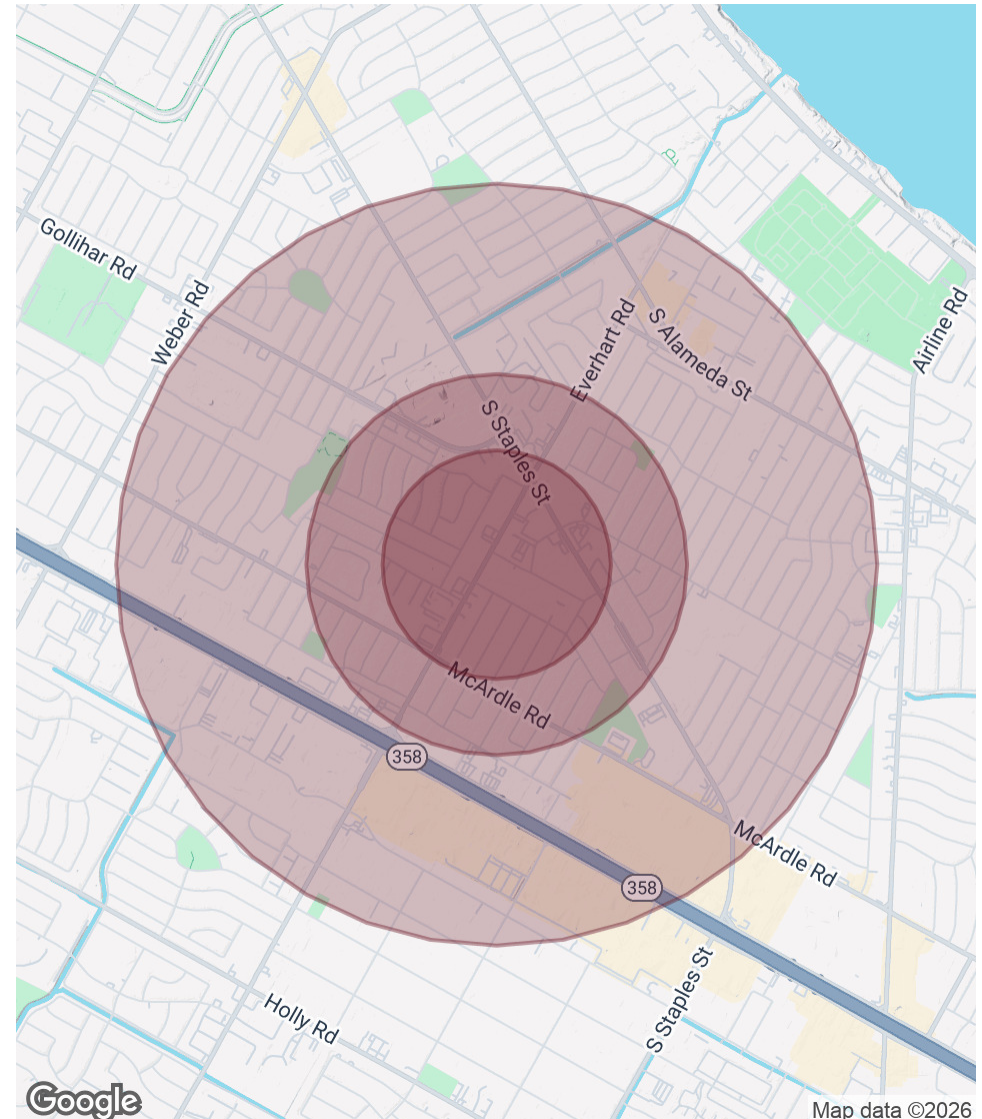
4634 EVERHART RD | CORPUS CHRISTI, TX 78411

POPULATION	0.3 MILES	0.5 MILES	1 MILE
Total Population	758	3,016	12,556
Average Age	41	40	41
Average Age (Male)	39	39	40
Average Age (Female)	42	42	43

HOUSEHOLDS & INCOME	0.3 MILES	0.5 MILES	1 MILE
Total Households	287	1,170	4,976
# of Persons per HH	2.6	2.6	2.5
Average HH Income	\$58,781	\$64,105	\$70,693
Average House Value	\$133,258	\$153,616	\$190,629

Demographics data derived from AlphaMap



MARK ADAME, CCIM, SIOR  
 mark@joeadame.com  
 O: 361.880.5888  
 C: 361.813.7245

JOEADAME.COM

The information contained herein has been obtained from sources we deem reliable. We have no reason to doubt its accuracy, but we do not guarantee it.



## Information About Brokerage Services

*Texas law requires all real estate licensees to give the following information about brokerage services to prospective buyers, tenants, sellers and landlords.*

### TYPES OF REAL ESTATE LICENSE HOLDERS:

- # **A BROKER** is responsible for all brokerage activities, including acts performed by sales agents sponsored by the broker.
- # **A SALES AGENT** must be sponsored by a broker and works with clients on behalf of the broker.

### A BROKER'S MINIMUM DUTIES REQUIRED BY LAW (A client is the person or party that the broker represents):

- # Put the interests of the client above all others, including the broker's own interests;
- # Inform the client of any material information about the property or transaction received by the broker;
- # Answer the client's questions and present any offer to or counter-offer from the client; and
- # Treat all parties to a real estate transaction honestly and fairly.

### A LICENSE HOLDER CAN REPRESENT A PARTY IN A REAL ESTATE TRANSACTION:

**AS AGENT FOR OWNER (SELLER/LANDLORD):** The broker becomes the property owner's agent through an agreement with the owner, usually in a written listing to sell or property management agreement. An owner's agent must perform the broker's minimum duties above and must inform the owner of any material information about the property or transaction known by the agent, including information disclosed to the agent or subagent by the buyer or buyer's agent.

**AS AGENT FOR BUYER/TENANT:** The broker becomes the buyer/tenant's agent by agreeing to represent the buyer, usually through a written representation agreement. A buyer's agent must perform the broker's minimum duties above and must inform the buyer of any material information about the property or transaction known by the agent, including information disclosed to the agent by the seller or seller's agent.

**AS AGENT FOR BOTH - INTERMEDIARY:** To act as an intermediary between the parties the broker must first obtain the written agreement of each party to the transaction. The written agreement must state who will pay the broker and, in conspicuous bold or underlined print, set forth the broker's obligations as an intermediary. A broker who acts as an intermediary:

- # Must treat all parties to the transaction impartially and fairly;
- # May, with the parties' written consent, appoint a different license holder associated with the broker to each party (owner and buyer) to communicate with, provide opinions and advice to, and carry out the instructions of each party to the transaction.
- # Must not, unless specifically authorized in writing to do so by the party, disclose:
  - o that the owner will accept a price less than the written asking price;
  - o that the buyer/tenant will pay a price greater than the price submitted in a written offer; and
  - o any confidential information or any other information that a party specifically instructs the broker in writing not to disclose, unless required to do so by law.

**AS SUBAGENT:** A license holder acts as a subagent when aiding a buyer in a transaction without an agreement to represent the buyer. A subagent can assist the buyer but does not represent the buyer and must place the interests of the owner first.

### TO AVOID DISPUTES, ALL AGREEMENTS BETWEEN YOU AND A BROKER SHOULD BE IN WRITING AND CLEARLY ESTABLISH:

- # The broker's duties and responsibilities to you, and your obligations under the representation agreement.
- # Who will pay the broker for services provided to you, when payment will be made and how the payment will be calculated.

**LICENSE HOLDER CONTACT INFORMATION:** This notice is being provided for information purposes. It does not create an obligation for you to use the broker's services. Please acknowledge receipt of this notice below and retain a copy for your records.

<b>Joe Adame &amp; Associates, Inc.</b>	<b>416864</b>	<b>mark@joeadame.com</b>	<b>(361)880-5888</b>
Licensed Broker /Broker Firm Name or	License No.	Email	Phone
Primary Assumed Business Name			
<b>Mark Adame, CCIM SIOR</b>	<b>480169</b>	<b>mark@joeadame.com</b>	<b>(361)880-5888</b>
Designated Broker of Firm	License No.	Email	Phone
Licensed Supervisor of Sales Agent/ Associate	License No.	Email	Phone
Sales Agent/Associate's Name	License No.	Email	Phone

\_\_\_\_\_  
Buyer/Tenant/Seller/Landlord Initials

\_\_\_\_\_  
Date

Regulated by the Texas Real Estate Commission

TXR-2501

Joe Adame & Associates, Inc., 819 N. Upper Broadway Street Corpus Christi, TX 78401  
Mark A. Adame

Information available at [www.trec.texas.gov](http://www.trec.texas.gov)

IABS 1-0 Date

Phone: 361.880.5888

Fax: 361.880.5883

802 Navigation

Produced with Lone Wolf Transactions (zipForm Edition) 231 Shearson Cr. Cambridge, Ontario, Canada N1T 1J5 [www.lwolf.com](http://www.lwolf.com)