

FOR SALE

**1619 W. HAMILTON STREET**

Allentown, PA 18102

**\$875,000**



*For more information please contact:*

**JASON C. SOURBEER**

Director

+1 717 231 7451

[jason.sourbeer@cushwake.com](mailto:jason.sourbeer@cushwake.com)

**CUSHMAN & WAKEFIELD OF PENNSYLVANIA, LLC**

4423 North Front Street

Harrisburg, PA 17110 | USA

+1 717 231 7290

FOR SALE

# 1619 W. HAMILTON STREET

Allentown, PA 18102



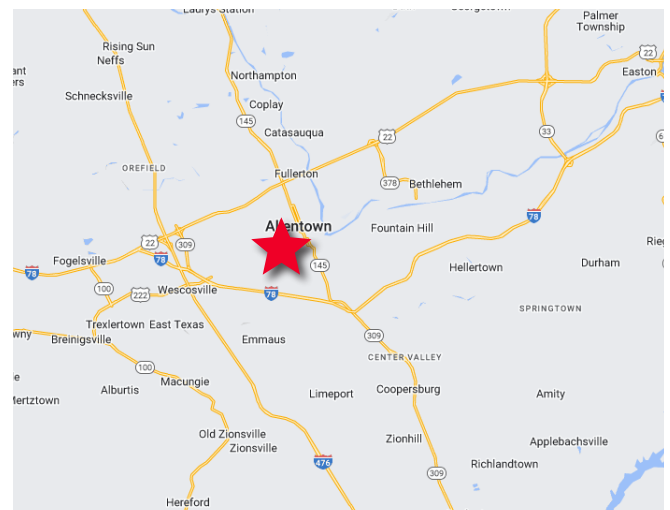
## 6,322 SF | 2 STORY OFFICE BUILDING

Charming two-story office building currently being utilized as a funeral home. The building is 6,322 SF with 20 parking spaces and a two-car garage. This property is situated on 0.42 acres and zoned R-H (High Density Residential). This property lends itself well to professional office users looking for visibility on highly travelled Hamilton Street. This property lends itself well to an office suite on the first floor with 2-3 apartments on the 2nd and 3rd floor as this property was once utilized.

The Lehigh/Northampton Submarket consists of retail/commercial, medical office and residential uses. The property is adjacent to St. Luke's Allentown Campus, the Scottish Rite Cathedral, the Community Music School and the Masonic Temple. The property is located in close proximity to Route 22, I-78 and I-476.

### PROPERTY DETAILS

ADDRESS	1619 W. Hamilton Street Allentown, PA 18102
COUNTY	Lehigh County
MUNICIPALITY	Allentown
TOTAL BUILDING SF	6,322 SF
ACRES	0.42 acres
STORIES	2 stories
BUILT	1920
ELEVATOR	Yes
SPRINKLERS	No
LIGHTING	Fluorescent
CEILING	8'-10' ceiling height
ZONING	R-H — High Density Residential
CONSTRUCTION	Stucco
PARKING	2 car garage + 20 spaces in parking lot



FOR SALE

**1619 W. HAMILTON STREET**  
Allentown, PA 18102



**CUSHMAN &  
WAKEFIELD**

**PROPERTY PHOTOS**



FOR SALE

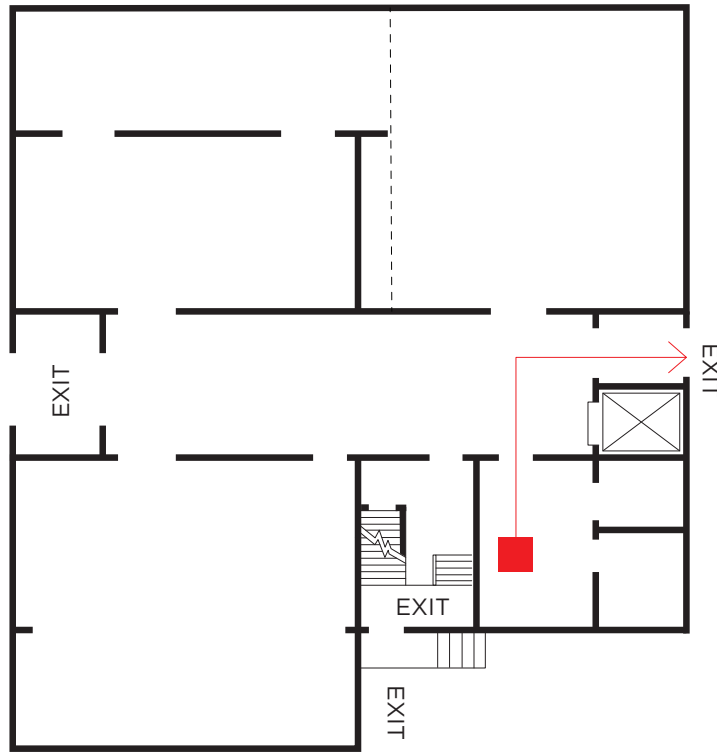
**1619 W. HAMILTON STREET**  
Allentown, PA 18102



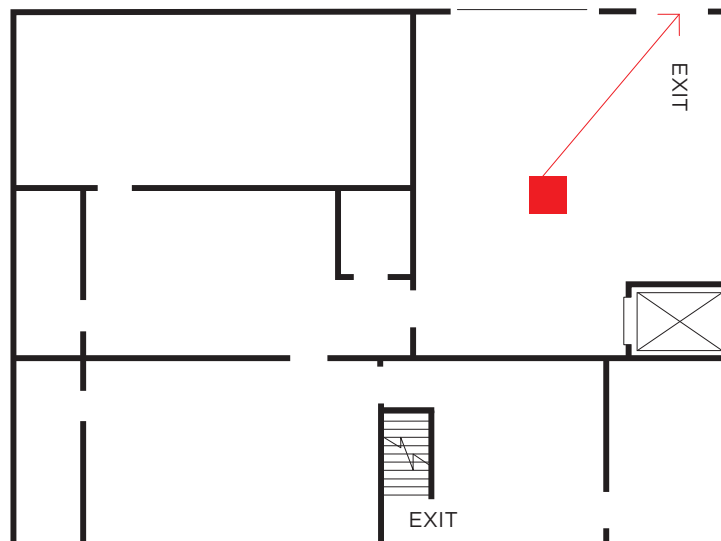
**CUSHMAN &  
WAKEFIELD**

## FLOOR PLANS

First Floor



Second Floor



FOR SALE

**1619 W. HAMILTON STREET**  
Allentown, PA 18102



## AERIAL MAP



*For more information please contact:*

**JASON C. SOURBEER**

Director

+1 717 231 7451

[jason.sourbeer@cushwake.com](mailto:jason.sourbeer@cushwake.com)

**CUSHMAN & WAKEFIELD OF PENNSYLVANIA, LLC**

4423 North Front Street

Harrisburg, PA 17110 | USA

+1 717 231 7290

©2024 Cushman & Wakefield. All rights reserved. The information contained in this communication is strictly confidential. This information has been obtained from sources believed to be reliable but has not been verified. NO WARRANTY OR REPRESENTATION, EXPRESS OR IMPLIED, IS MADE AS TO THE CONDITION OF THE PROPERTY (OR PROPERTIES) REFERENCED HEREIN OR AS TO THE ACCURACY OR COMPLETENESS OF THE INFORMATION CONTAINED HEREIN, AND SAME IS SUBMITTED SUBJECT TO ERRORS, OMISSIONS, CHANGE OF PRICE, RENTAL OR OTHER CONDITIONS, WITHDRAWAL WITHOUT NOTICE, AND TO ANY SPECIAL LISTING CONDITIONS IMPOSED BY THE PROPERTY OWNER(S). ANY PROJECTIONS, OPINIONS OR ESTIMATES ARE SUBJECT TO UNCERTAINTY AND DO NOT SIGNIFY CURRENT OR FUTURE PROPERTY PERFORMANCE.