

FIRST PLACE

2232 N. First Street: ±4,256 SF

2248 N. First Street: ±4,878 SF

JON DECOITE
Managing Director
+1 408 615 3408
jon.decoite@cushwake.com
LIC #01471300

MIKE BAKER
Director
+1 408 615 3406
mike.baker@cushwake.com
LIC #01884037



SWENSON

VIEW SITE SPECIFIC COVID-19 PREVENTION PLAN

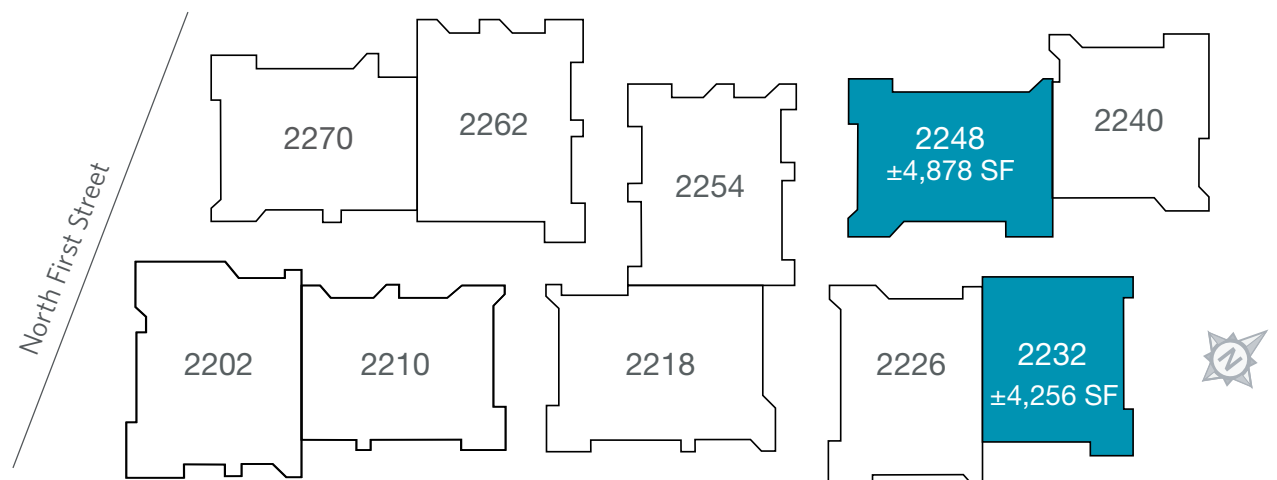
Cushman & Wakefield Copyright 2022. No warranty or representation, express or implied, is made to the accuracy or completeness of the information contained herein, and same is submitted subject to errors, omissions, change of price, rental or other conditions, withdrawal without notice, and to any special listing conditions imposed by the property owner(s). As applicable, we make no representation as to the condition of the property (or properties) in question.

FIRST PLACE



PROPERTY HIGHLIGHTS

- Free-standing buildings
- Adjacent to VTA Light Rail Station
- Prominent signage on North First Street monument and suite entry
- Ample parking adjacent to each building
- No Load Factor or Restricted Building Hours - Suites Separately Metered
- Garden Setting with Outdoor Common Areas
- 4 parking spaces per 1,000 SF leased
- Convenient access to Highway 101 and Interstate 880

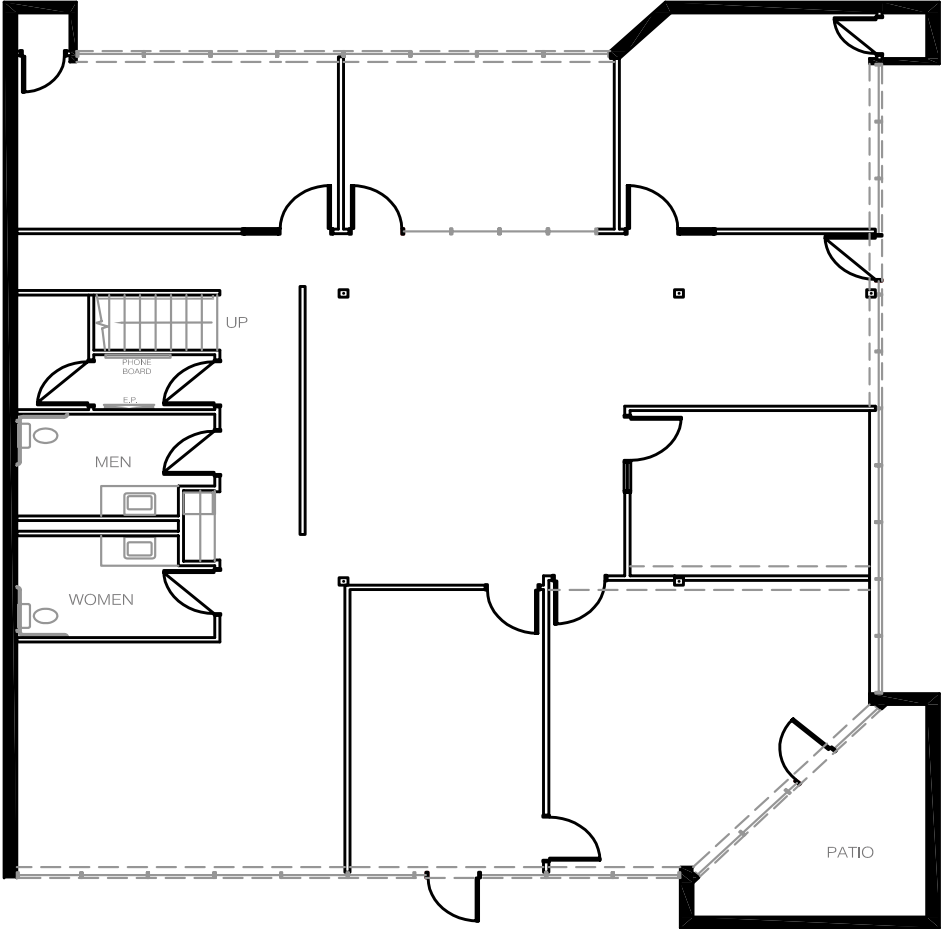


FIRST PLACE

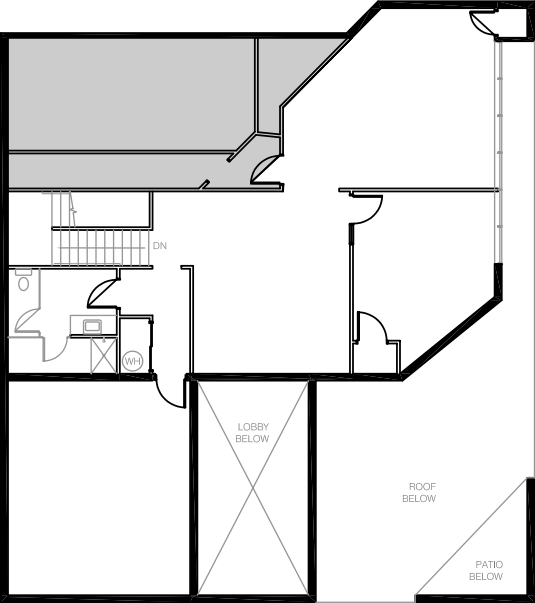
2232 N. First Street, San Jose, CA | ±4,256 SF

FLOOR PLAN

±4,256 SF - Available Now



FIRST FLOOR



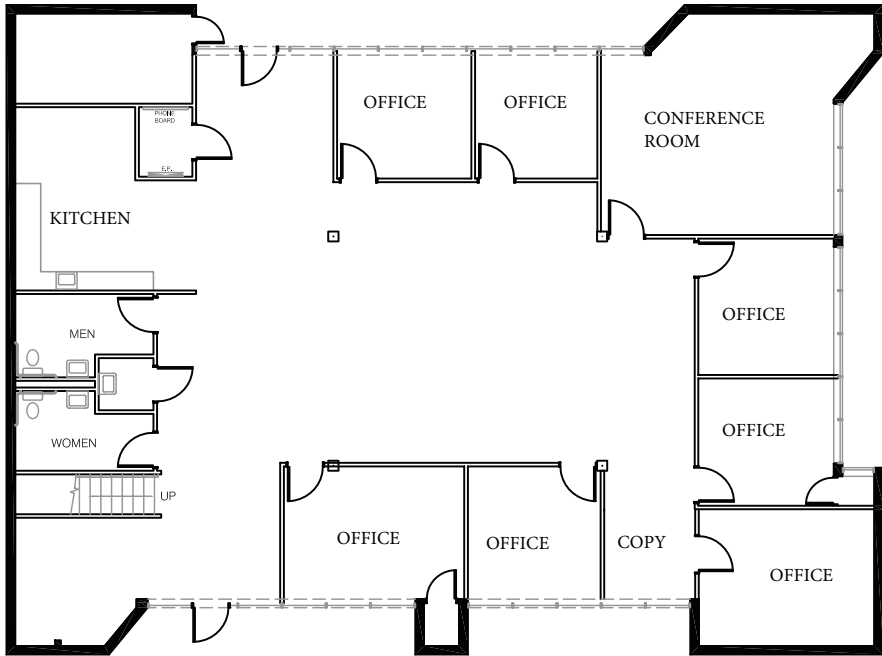
SECOND FLOOR

FIRST PLACE

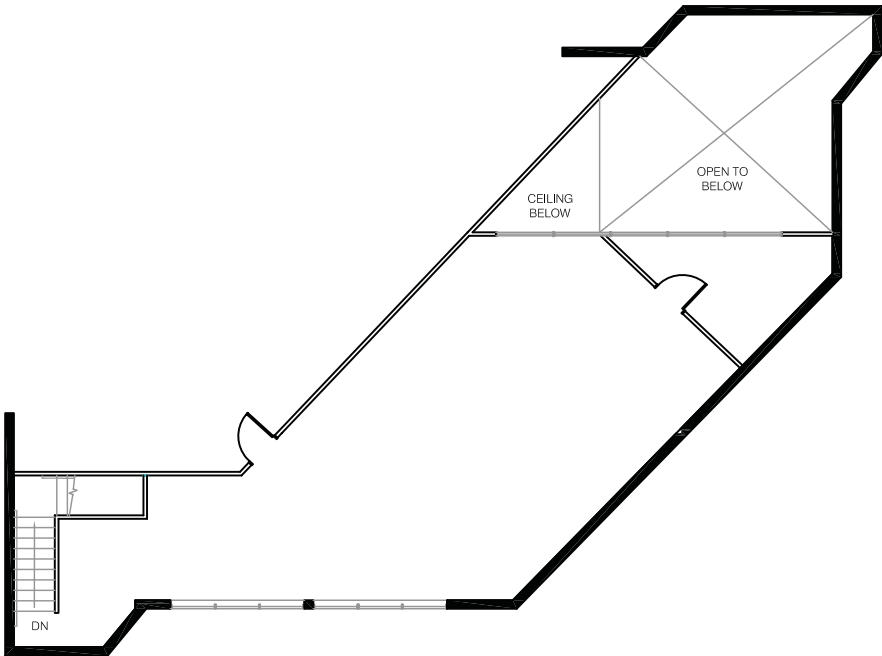
2248 N. First Street, San Jose | ±4,878 SF

FLOOR PLAN

±4,878 SF - Available Now



FIRST FLOOR



SECOND FLOOR

FIRST PLACE

2248-2270 N. First Street, San Jose | ±9,134 SF

AERIAL



LOCATION:

First Place is located on the east side of North First Street, North of Brokaw and south of Charcot Avenue, approximately 1 mile east of Highway 101.

First Place is centrally located with easy access to Highways 101, 880 and 87.

TRANSPORTATION



◆ Planned BART station	— Planned BART Extension
○ Existing and Future VTA Light Rail Stations	⋯ VTA Light Rail
● Caltrain Station	— Caltrain

FIRST PLACE

2248-2270 N. First Street, San Jose | ±9,134 SF

