



VALUE INDUSTRIAL PARTNERS, LLC

Industrial Real Estate Investment, Brokerage and Management

477 W. Wrightwood Avenue, Elmhurst, Illinois 60126 TEL: 630-333-1900 FAX: 630-333-1910

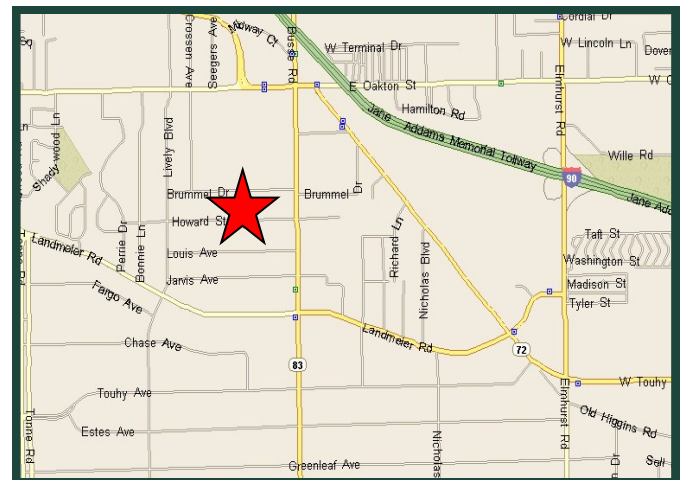


1550 Howard Elk Grove Village, Illinois

FOR LEASE 24,720 SF

Building Specifications

Available Size:	24,720 Square Feet
Building Size	49,440 Square Feet
Office:	+/- 3,500 Square Feet
Ceiling Height:	21'
Loading:	2 Interior Docks 1 Drive-in Door
Power:	400 Amps, 480 Volts
Sprinklers:	Yes
Real Estate Taxes:	\$3.23 PSF (2024 paid in 2025)
CAM & Insurance:	\$0.69 PSF



For Further Information, Please Contact:

Brian P. Gedvilas, Director of Leasing
bgedvilas@valueindustrialpartners.com

Brian M. Liston, Principal
bliston@valueindustrialpartners.com

TEL: 630-333-1900 FAX: 630-333-1910

Comments

- Professionally owned and managed
- Minutes to O'Hare Airport

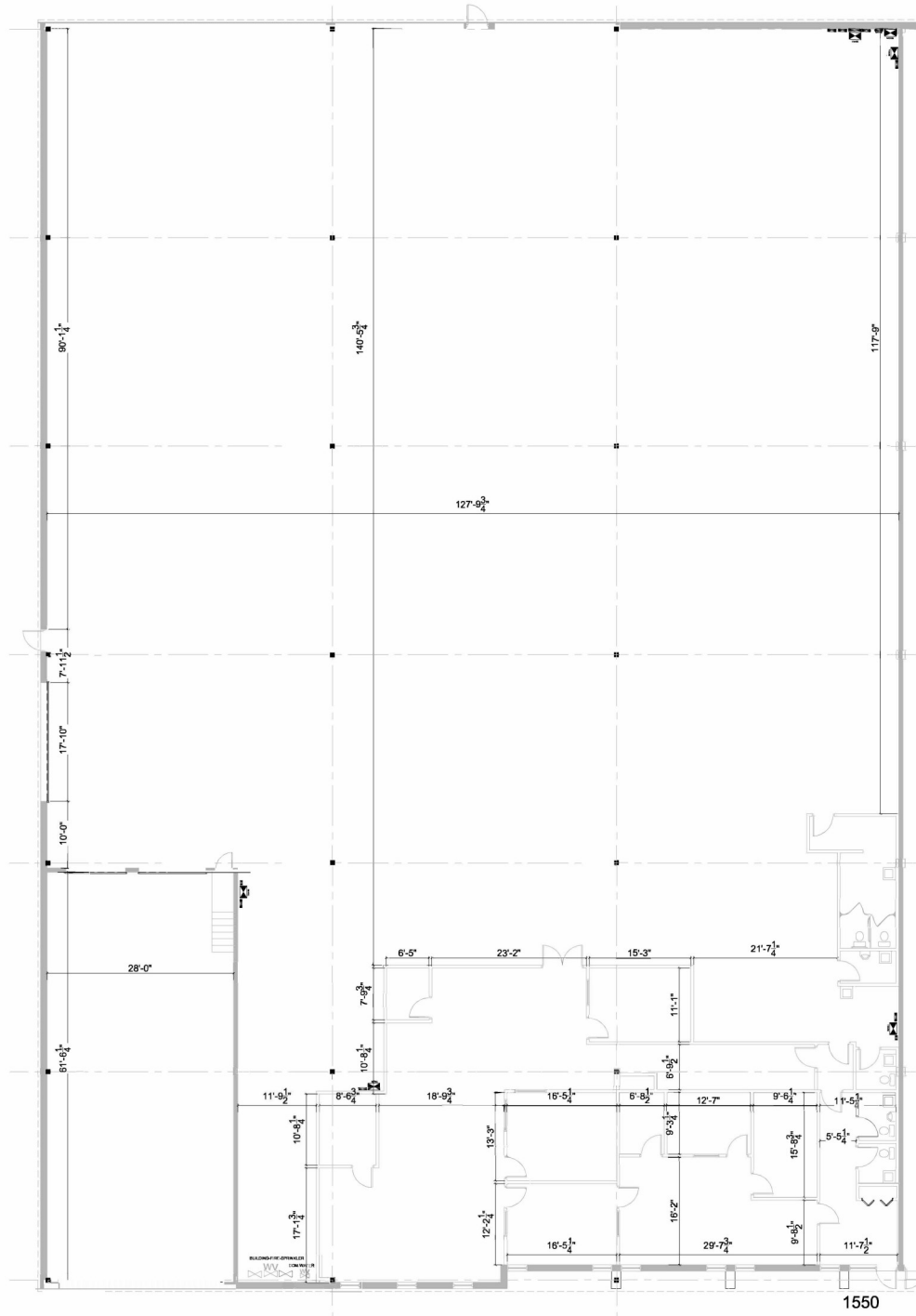
Officers of the firm have an ownership interest in this property.
Submitted subject to error, change in status, or withdrawal without notice.



VALUE INDUSTRIAL PARTNERS, LLC

Industrial Real Estate Investment, Brokerage and Management

477 W. Wrightwood Avenue, Elmhurst, Illinois 60126 TEL: 630-333-1900 FAX: 630-333-1910



1 PROPOSED FLOOR PLAN
1/4" = 1'-0"

Officers of the firm have an ownership interest in this property.
Submitted subject to error, change in status, or withdrawal without notice.