



MOVE-IN READY FOR LEASE – OFFICE SUITES

MIRA VISTA OFFICE PARK

2364-2372 South Uecker Lane, Lewisville, TX

LOCATION:

Ideal location for professional office tenants.

Move-in ready office space for lease in single-story buildings located in the Mira Vista professional office park off FM 3040 (East Round Grove Road) between Business Highway 121 and Rockbrook Drive. The location has easy access to I-35 E, Sam Rayburn Tollway and all nearby retail and restaurant offerings.



SPACES AVAILABLE:

MOVE-IN READY

2364 S Uecker Lane

- Entire Bldg – 2,469 RSF
- Available 4/1/2026

2368 S Uecker Lane

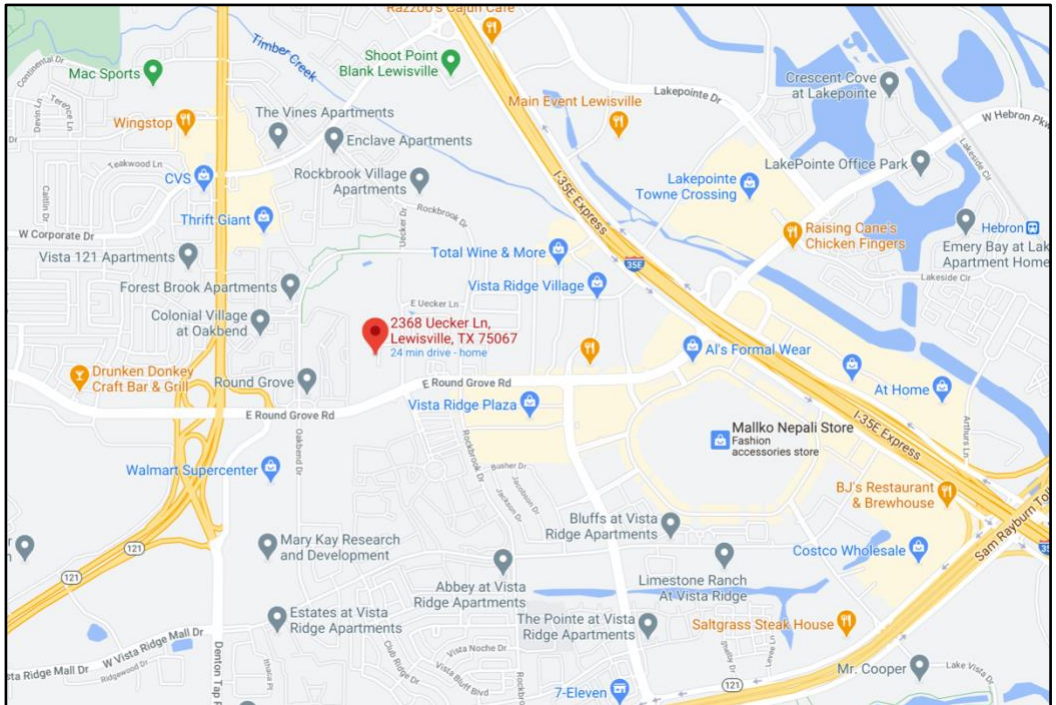
- Suite 200 – 1,400 RSF
- Available NOW!

2370 S Uecker Lane

- Suite 200 – 1,376 RSF
- Available 4/1/2026

LEASE RATE:

Competitive Rates - See Broker for Pricing.



FOR INFORMATION:

Diana Pergande: Diana@BridgeRealtyTexas.com
www.BridgeRealtyTexas.com | 972.899.1851
400 Parker Square, Suite 270H | Flower Mound, TX 75028

This information is believed to be accurate, but no representation or warranty, express or implied, as to its accuracy or completeness is made by any party. The presentation of this property is submitted subject to errors, omissions, change of price or prior sale or lease, or withdrawal without notice.

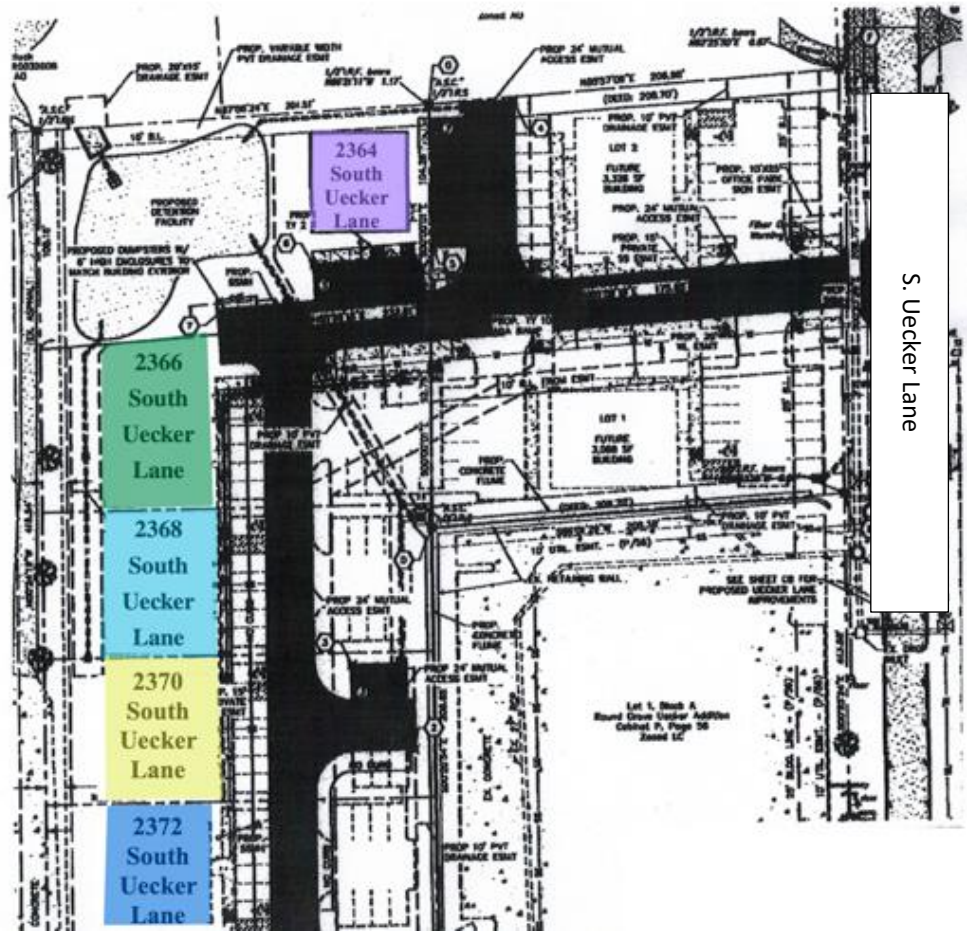


BRIDGE REALTY
of
TEXAS
COMMERCIAL REAL ESTATE

BUILDING SITE

MIRA VISTA OFFICE PARK

2364-2372 South Uecker Lane, Lewisville, TX



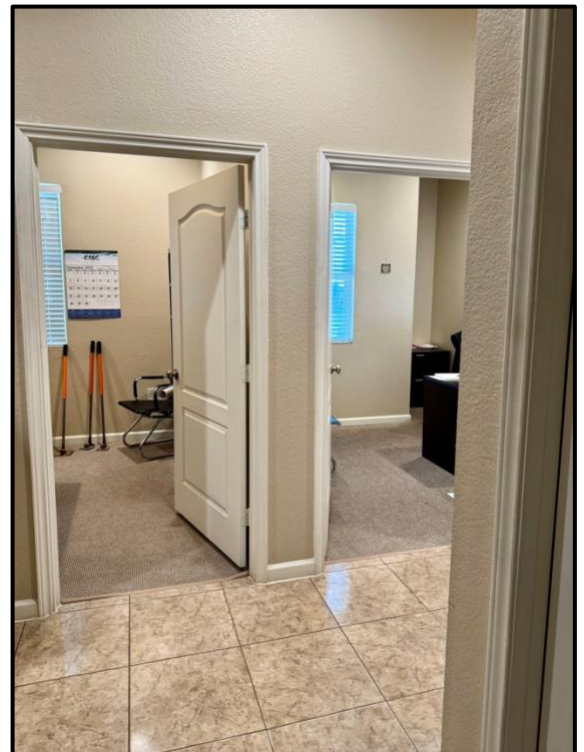
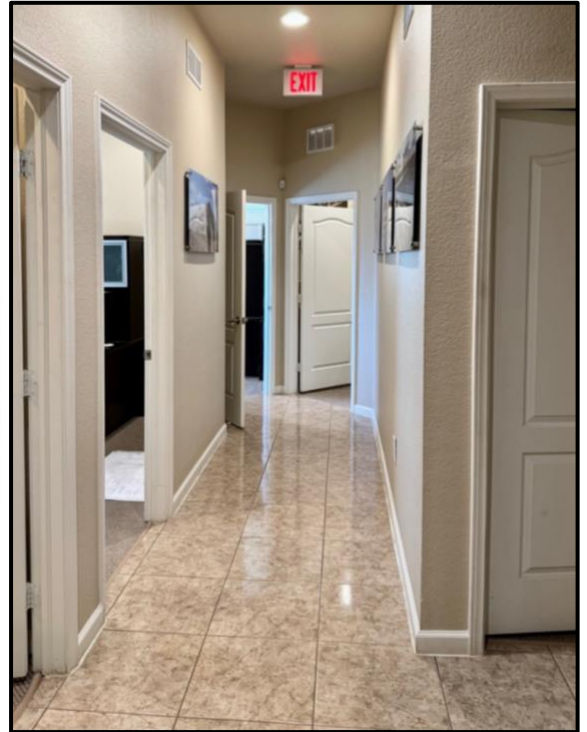
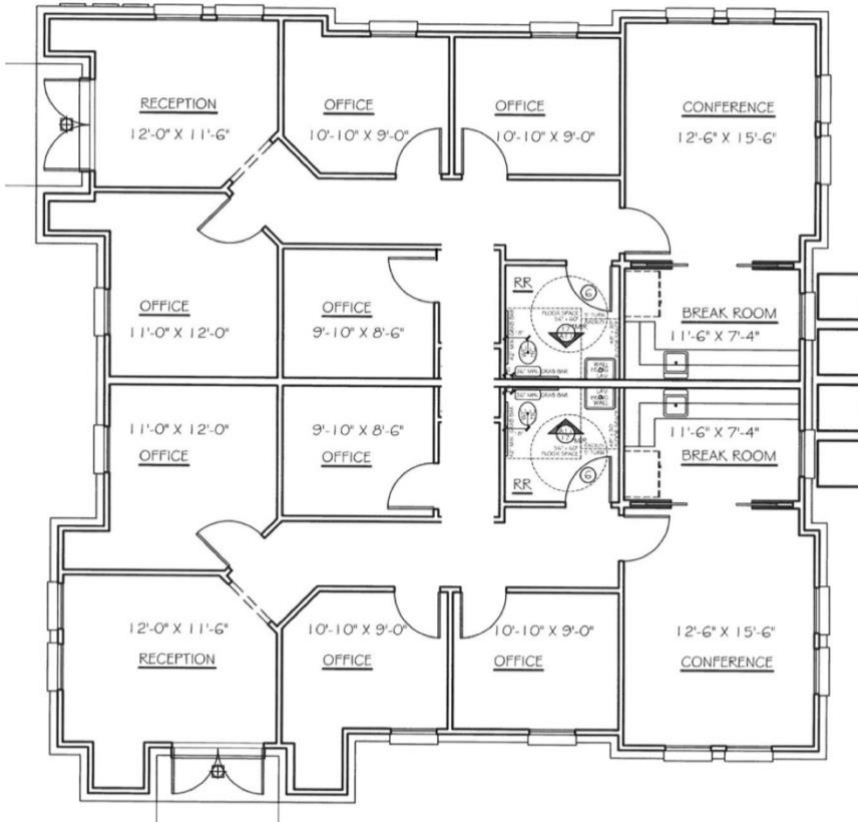
Mira Vista Office Park
2364 - 2372 South Uecker Lane
Lewisville, TX



FLOOR PLAN

2364 South Uecker Lane, Suites A-B
Lewisville, TX

2364 S. Uecker Lane, Lewisville, TX 75067
Suites A-B (entire building) – 2,469 RSF

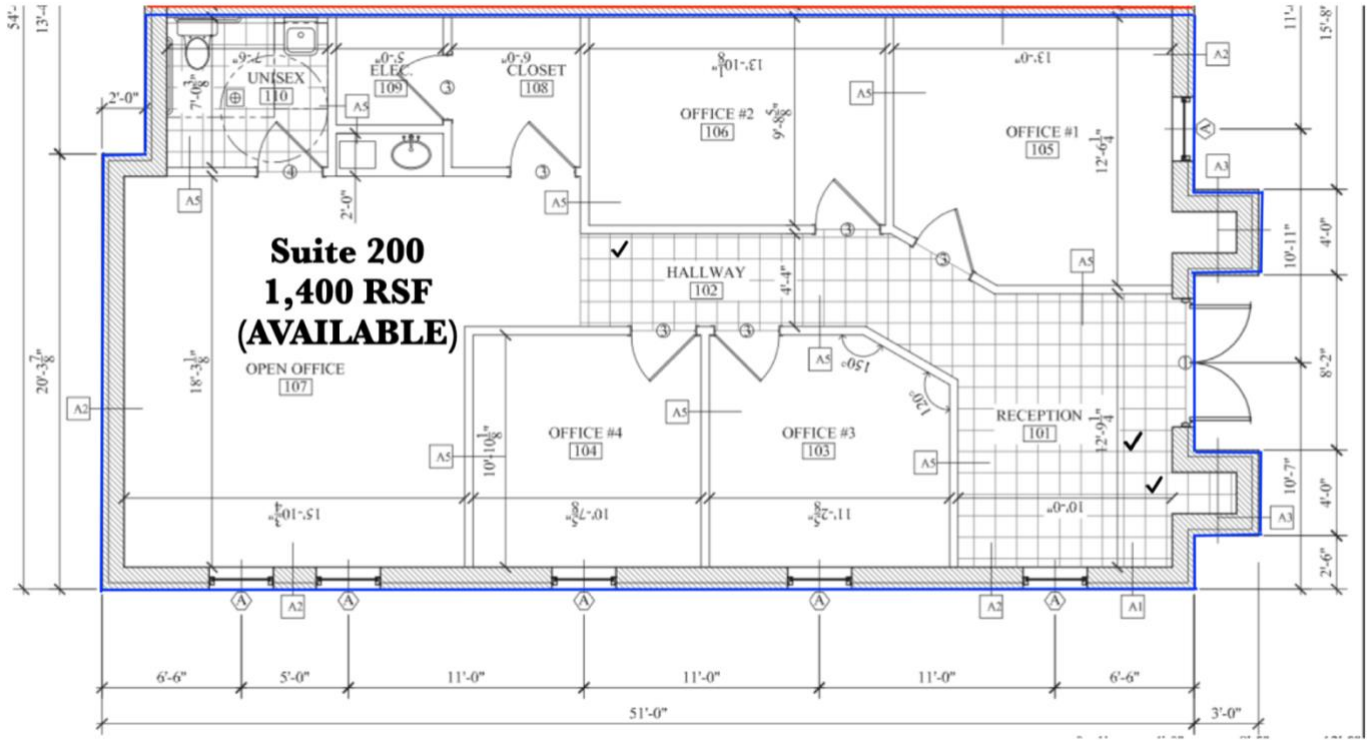




FLOOR PLAN

2368 South Uecker Lane, Suite 200
Lewisville, TX

2368 S. Uecker Lane, Lewisville, TX 75067
Suite 200 – 1,400 RSF



FLOOR PLAN

2370 South Uecker Lane, Suite 200
Lewisville, TX

2370 S. Uecker Lane, Lewisville, TX 75067
Suite 200 – 1,376 RSF

