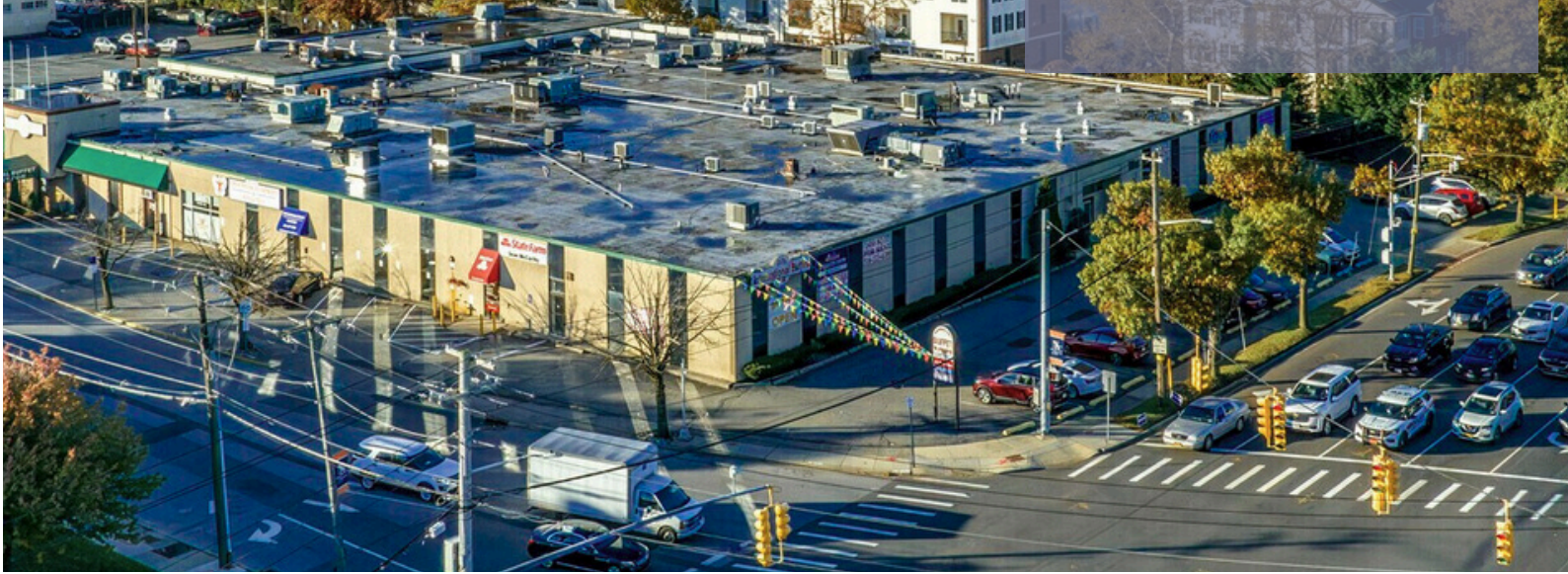


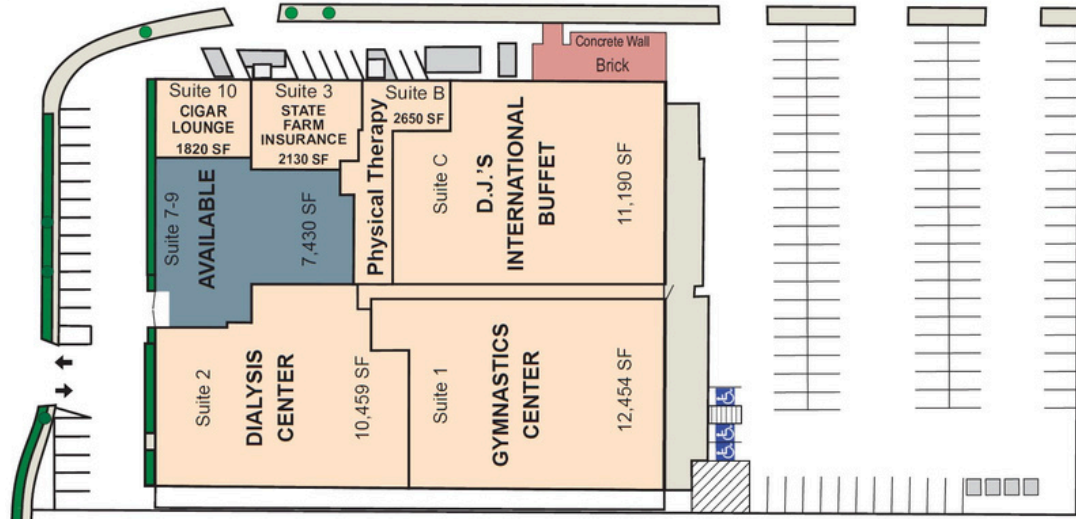
1100 STEWART AVENUE GARDEN CITY, NY

SPACE AVAILABLE
7430 SF



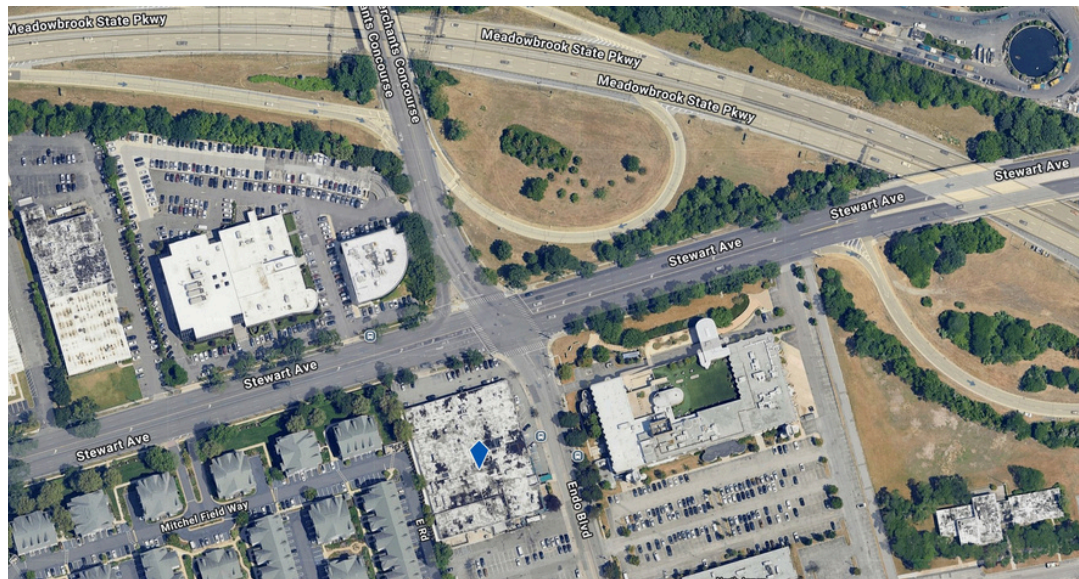
PROPERTY FACTS

- TOTAL SPACE AVAIL: 7430 SF
- TYPE: RETAIL
- PARKING RATIO: 2.6/1,000 SF
- EASY ACCESS TO MEADOWBROOK STATE PARKWAY
- 2 MILES FROM THE ROOSEVELT FIELD SHOPPING CENTER
- MEDIAN HOUSEHOLD INCOME EXCEEDS \$100K.



PROPERTY LINKS

- [FLOOR PLAN](#)
- [SITE SURVEY](#)
- [3-5-7 RADIUS DEMOGRAPHICS](#)



RYAN RODGER

| (516) 223-6200 | RYAN@UPCLI.COM



WWW.UPCLI.COM