

IMMEDIATELY AVAILABLE FOR LEASE

±0.42 - ±2.57 Acre Laydown Yard in Gaffney, SC



REEDY COMMERCIAL



296 Lemuel Road Gaffney, SC 29341

PROPERTY DESCRIPTION

- Immediately available for Lease
- Laydown yards are located off of Exit 96 in Cherokee County's I85
- ±61,300 vehicles pass by this site every day
- Topography: Flat

OFFERING SUMMARY

Laydown Lot 1: ±1.191 Acres | \$1,250/month

Laydown Lot 2: ±0.964 Acres | \$1,250/month

Laydown Lot 3: ±0.419 Acres | \$850/month

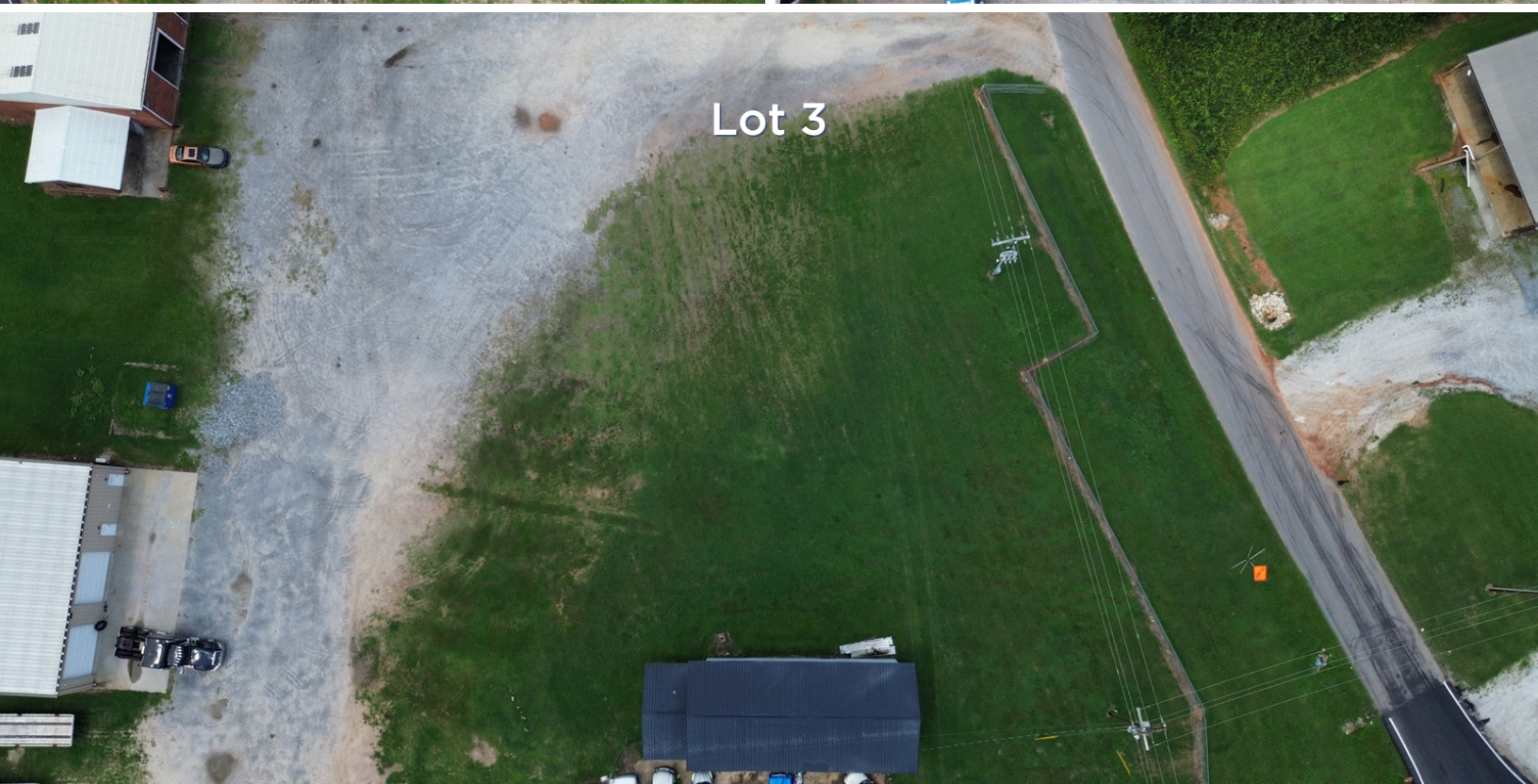
Total: ±2.574 Acres | \$3,350/month



Carl Hocker
864.680.7654
chocker@reedypg.com

REEDY PROPERTY GROUP
301 N. Main Street, Suite 501
Greenville, SC 29601
reedyccommercial.com

296 Lemuels Road
Gaffney, SC 29341



Carl Hocker
864.680.7654
chocker@reedypg.com

REEDY PROPERTY GROUP
301 N. Main Street, Suite 501
Greenville, SC 29601
reedyccommercial.com

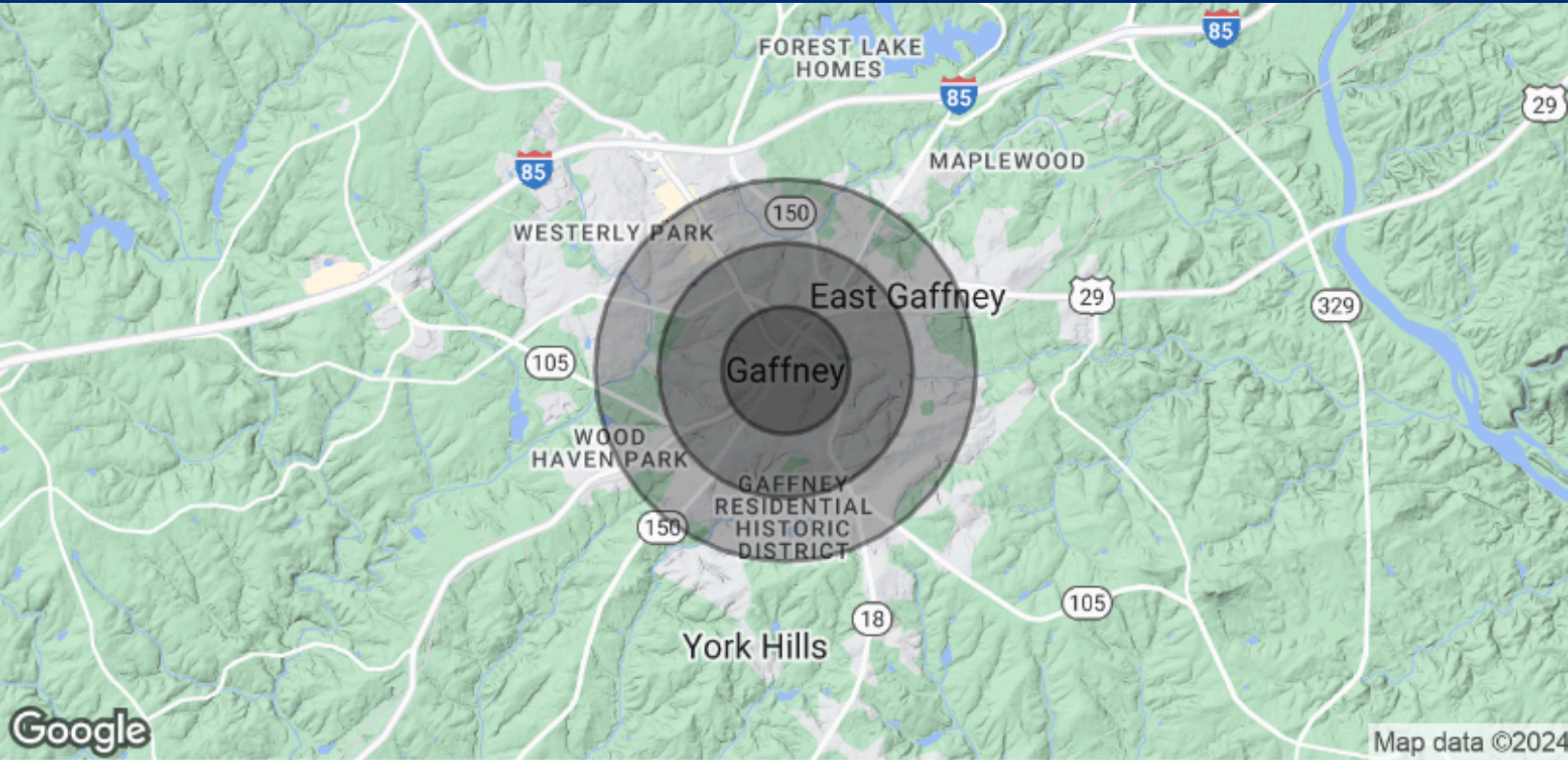
296 Lemuels Road
Gaffney, SC 29341



Carl Hocker
864.680.7654
chocker@reedypg.com

REEDY PROPERTY GROUP
301 N. Main Street, Suite 501
Greenville, SC 29601
reedyccommercial.com

DEMOGRAPHICS



POPULATION	0.5 MILES	1 MILE	1.5 MILES
Total Population	1,342	5,140	9,002
Average Age	37.8	36.6	36.6
Average Age (Male)	36.1	35.0	34.1
Average Age (Female)	40.5	40.1	40.4

HOUSEHOLDS & INCOME	0.5 MILES	1 MILE	1.5 MILES
Total Households	690	2,634	4,472
# of Persons per HH	1.9	2.0	2.0
Average HH Income	\$27,925	\$25,924	\$27,636
Average House Value	\$78,289	\$75,307	\$81,433

2020 American Community Survey (ACS)