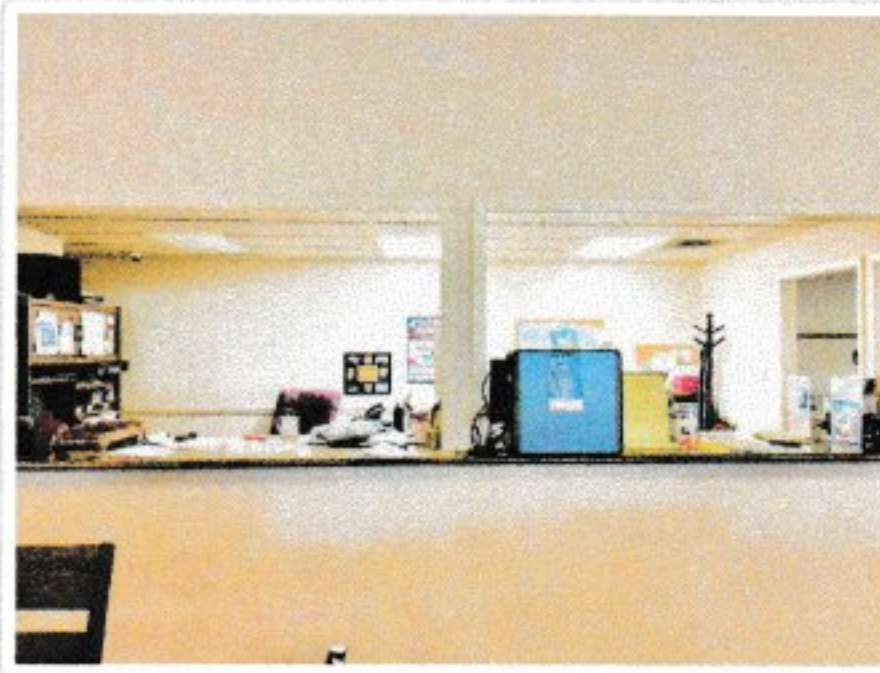
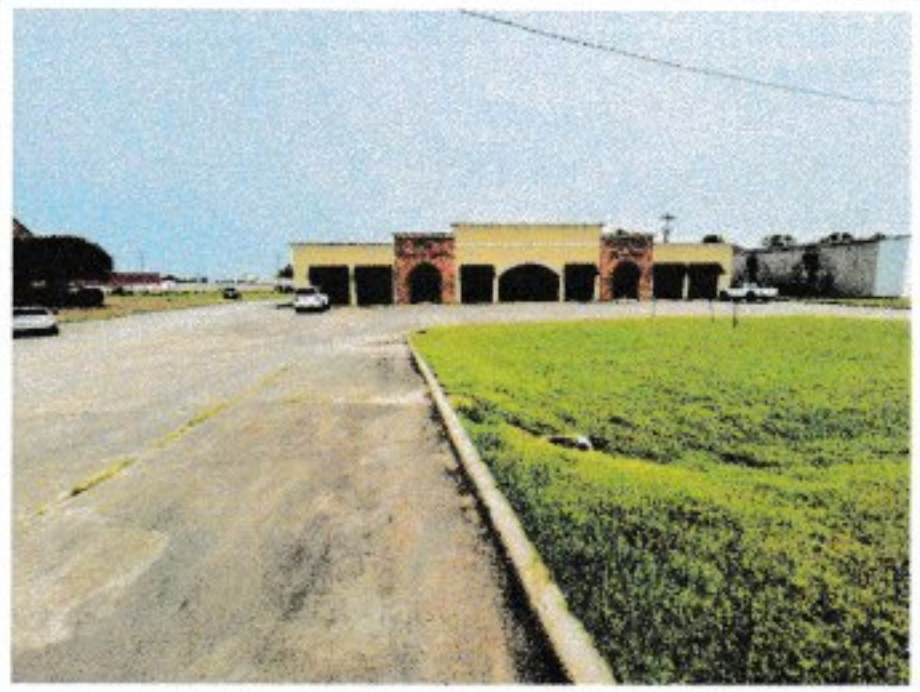
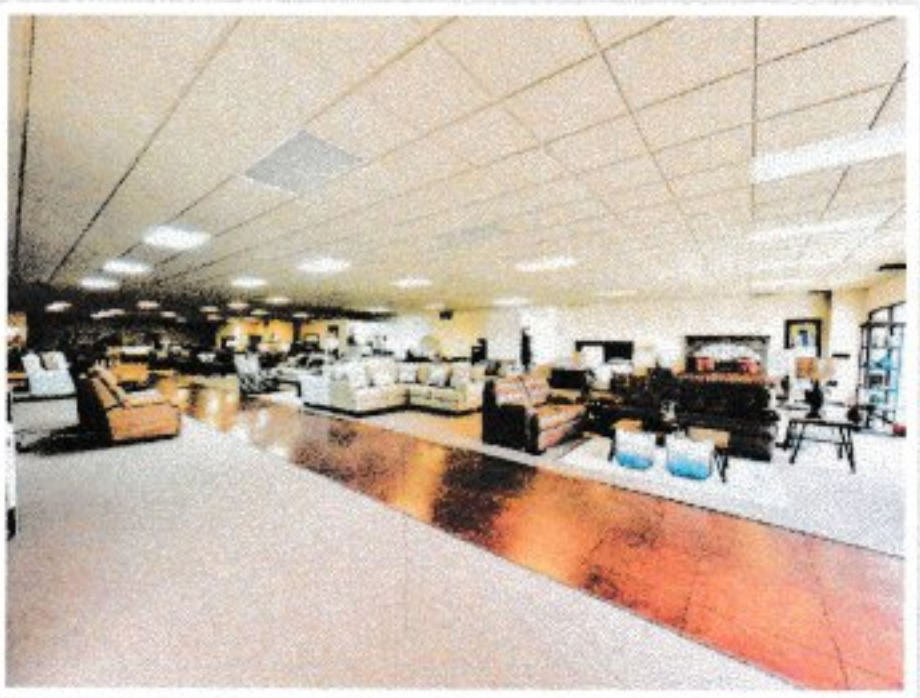


FOR SALE: 869 S State Street, CLARKSDALE, MS 38614



List Price: \$899,000.00



Prime Real Estate Opportunity! Are you in search of prime real estate with 30,000 sq. ft. of commercial space? This property offers: -20,000 Sq. ft. for heated and cooled retail space -10,000 Sq. ft. warehouse space -one loading dock -an add'l. roll up door -Approx. 196' of road frontage with two drives - up to 32 parking spaces -three bathrooms -office and counter space - Security system -Surveillance system - 2.10 Acres - It is currently a long standing, profitable furniture business that can be purchased separately. Buyer can create storage units, office spaces, separate retail spaces or build out to fit their needs. There are endless possibilities with this property. Call for your showing today.



Tracy Pickett
Office Velvet Grove Realty
Phone (662) 816-5604
Email pickett_tracy@hotmail.com



Information Herein Deemed Reliable but Not Guaranteed All Measurements are Approximate.

