

ROOM LEGEND

RM #	ROOM NAME
101	ENTRY VESTIBULE
102	CORRIDOR
103	WAITING
104	RECEPTION
105	STAIRS
106	DIRECTOR
107	FINANCIAL MANAGER
108	HOME DETENTION
109	HOME DETENTION
110	HOME DETENTION
111	EVIDENCE BASED PROGRAMS
112	ASSISTANT SUPERVISOR
113	SURVEILLANCE
114	HOME DETENTION
115	HOME DETENTION
116	HOME DETENTION EQUIPMENT
117	FILE STORAGE
118	CORRIDOR
119	CLASSROOM
120	VENDING
121	CLASSROOM
122	OFFICE
123	OFFICE SUPPLY STORAGE
124	FORENSICS
125	FORENSICS
126	FORENSICS
127	OFFICE
128	OFFICE
129	COMPUTER SERVICE
130	CORRIDOR
131	EMPLOYEE BREAKROOM
132	CORRIDOR
133	CORRIDOR
134	COURT A & D
135	COURT A & D
136	COURT A & D
137	COURT A & D
138	COURT A & D
139	MECHANICAL
140	MEN'S TOILET VESTIBULE
141	MEN'S TOILET
142	JANITOR
143	WOMEN'S TOILET VESTIBULE
144	WOMEN'S TOILET
201	WAITING
202	WEED & SEED
203	BOARDROOM
204	PAROLE
205	PAROLE

DOOR AND FRAME SCHEDULE

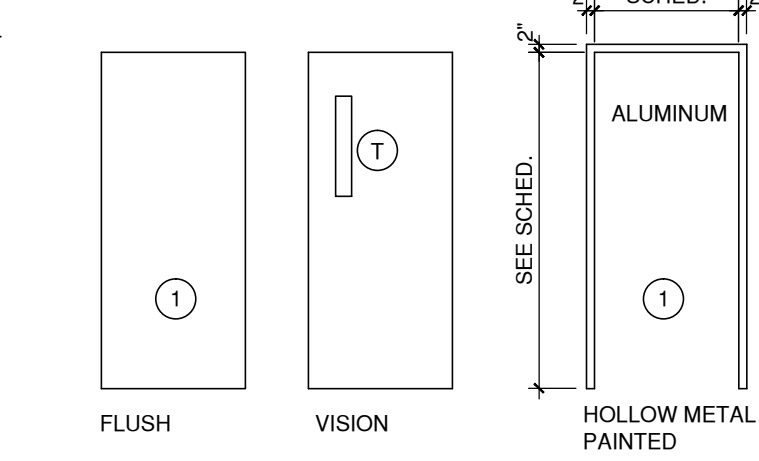
RM #	DOOR			FRAME		FIRE RTG	HARDWARE	SWING	REMARKS
	SIZE	MAT-TYPE	THK	MAT-TYPE					
103A	3'-0" x 7'-0"	SCW-1	1 3/4"	KHM-1	20 MIN.	LS, CLO.	LH	VISION	
103B	(2) 3'-0" x 7'-0"	ETR	---	ETR	R-1	LS			
104A	3'-0" x 7'-0"	SCW-1	1 3/4"	KHM-1	20 MIN.	LS, CLO.	RH		
104B						PS, CLO.	LH		
104C						PS, CLO.	RH		
104D						PS, CLO.	LH		
104E						PS, CLO.	RH		
104F						PS, CLO.	LH		
107A						PS, CLO.	RH		
107B						PS, CLO.	LH		
108A						PS, CLO.	RH		
108B						PS, CLO.	LH		
109A						PS, CLO.	RH		
109B						PS, CLO.	LH		
110A						PS, CLO.	RH		
110B						PS, CLO.	LH		
111A						PS, CLO.	RH		
111B						PS, CLO.	LH		
112A	ETR	---	---	ETR	R-1	LS, CLO.	LH	PROVIDE NEW ADA ACCEPTABLE HARDWARE	
113A	ETR	---	---	ETR	R-1	LS, CLO.	RH	PROVIDE NEW ADA ACCEPTABLE HARDWARE	
114A	3'-0" x 7'-0"	SCW-1	1 3/4"	KHM-1	20 MIN.	PS, CLO.	RH		
115A	3'-0" x 7'-0"	SCW-1	1 3/4"	KHM-1	20 MIN.	PS, CLO.	RH		
116A	ETR	---	---	ETR	R-1	PS	RH		
117A	3'-0" x 7'-0"	SCW-1	1 3/4"	KHM-1	20 MIN.	LS	RH		
119A	(2) 3'-0" x 7'-0"	SCW-1	1 3/4"	KHM-1	20 MIN.	PS, H.O., CLO.			
119B	ETR	---	---	ETR	R-1	PS, H.O., CLO.	RH	PROVIDE NEW ADA ACCEPTABLE HARDWARE	
121A	ETR	---	---	ETR	R-1	PS, H.O., CLO.	RH	PROVIDE NEW ADA ACCEPTABLE HARDWARE	
121B	ETR	---	---	ETR	R-1	PS, H.O., CLO.	RH	PROVIDE NEW ADA ACCEPTABLE HARDWARE	
122A	3'-0" x 7'-0"	SCW-1	1 3/4"	KHM-1	20 MIN.	PS, CLO.	LH		
123A	ETR	---	---	ETR	R-1	LS	LH	PROVIDE NEW ADA ACCEPTABLE HARDWARE	
124A	3'-0" x 7'-0"	SCW-1	1 3/4"	KHM-1	20 MIN.	PS, CLO.	RH		
125A						PS, CLO.	RH		
126A						PS, CLO.	RH		
127A						PS, CLO.	RH		
128A						PS, CLO.	LH		
129A						PS, CLO.	RH		
131A						PS, CLO.	LH		
133A	ETR	---	---	ETR	R-1	LS, CLO.	LH	PROVIDE NEW ADA ACCEPTABLE HARDWARE	
134A	3'-0" x 7'-0"	SCW-1	1 3/4"	KHM-1	20 MIN.	PS, CLO.	RH		
135A						PS, CLO.	RH		
136A						PS, CLO.	RH		
137A						PS, CLO.	LH		
138A						PS, CLO.	RH		
141A	ETR	---	---	ETR	R-1	DB	RH	PROVIDE NEW ADA ACCEPTABLE HARDWARE	
142A	ETR	---	---	ETR	R-1	LS	RH	PROVIDE NEW ADA ACCEPTABLE HARDWARE	
144A	ETR	---	---	ETR	R-1	DB	RH	PROVIDE NEW ADA ACCEPTABLE HARDWARE	
201A	ETR	---	---	ETR	R-1	LS, CLO.	LH	PROVIDE NEW ADA ACCEPTABLE HARDWARE	
202A	3'-0" x 7'-0"	SCW-1	1 3/4"	KHM-1	20 MIN.	LS	LH		
203A	ETR	---	---	ETR	R-1	PS	LH	PROVIDE NEW ADA ACCEPTABLE HARDWARE	
204A	ETR	---	---	ETR	R-1	LS	RH	PROVIDE NEW ADA ACCEPTABLE HARDWARE	
205A	ETR	---	---	ETR	R-1	EXT. DB	LH	PROVIDE NEW ADA ACCEPTABLE HARDWARE	

WINDOW NOTES:

- KNOCK DOWN HOLLOW METAL FRAME UNITS AND RELATED COMPONENTS SHOWN SHALL BE COMMERCIAL GRADE METAL FRAME AND AS FOLLOWS: FINISH - AS SELECTED BY OWNER'S REP. FROM MANUFACTURER'S STANDARD FINISHES. GLAZING - 1/2" CLEAR INTERIOR, TEMPERED.
- PROVIDE ALL RELATED ANCHORAGE ACCESSORIES AS REQUIRED FOR A COMPLETE INSTALLATION.
- G.C. SHALL VERIFY ALL REQUIRED ROUGH OPENING DIMENSIONS WITH MANUFACTURER PRIOR TO INSTALLATION.
- DIMENSIONS SHOWN ARE TO EDGE OF WINDOW UNIT.
- PROVIDE HORIZONTAL BLINDS AT EACH WINDOW UNITS 106B & 106C.
- PASS-THRU WINDOW 104E- SIMILAR TO CR LAURENCE "FLORENCE" D1038

DOOR AND FRAME SCHEDULE LEGEND:

- SCW: SOLID CORE WOOD- PAINTED
AL: KNOCK DOWN HOLLOW METAL, "TIMELY" OR APPROVED EQUAL.
ETR: EXISTING TO REMAIN
- REMARKS:
R-1 EXISTING DOOR TO REMAIN. PROVIDE NEW DEADBOLT LOCKSET.
- HARDWARE:
LS LOCK SET
PS PASSAGE SET
CLO. CLOSER
H.O. HOLD OPEN
DB DEAD BOLT

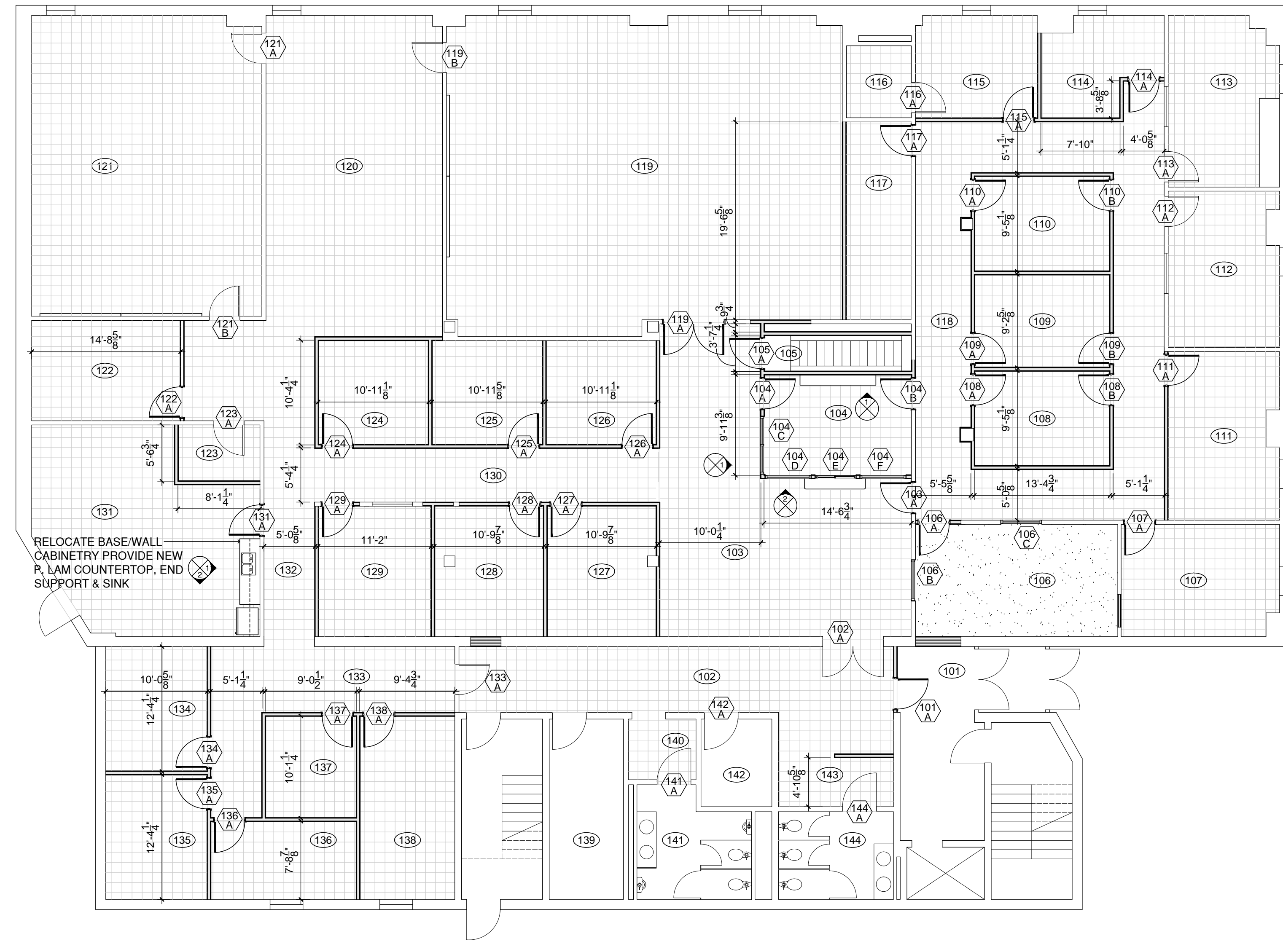


DOOR TYPES
SCALE: 1/4" = 1'-0"

HM FRAME TYPES
SCALE: 1/4" = 1'-0"

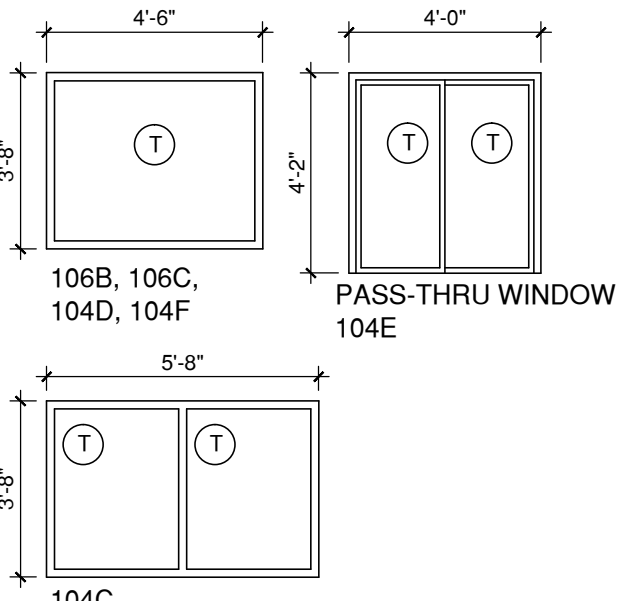
(T) TEMPERED IN ADDITION TO OTHER REQUIREMENTS SHOWN.

First Floor Plan
Scale: 1/8" = 1'-0"

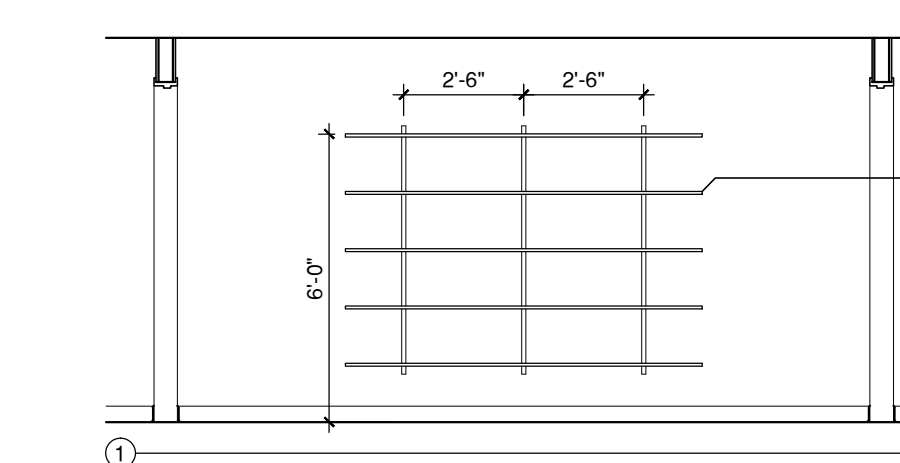


- PLAN LEGEND**
- NEW WALL CONSTRUCTION
 - EXISTING WALL CONSTRUCTION TO REMAIN
 - NEW VCT FLOORING
 - NEW CARPET
 - ROOM NUMBER
 - DOOR NUMBER
 - INTERIOR ELEVATION DESIGNATION, SEE CORRESPONDING ELEVATION AT LEFT.

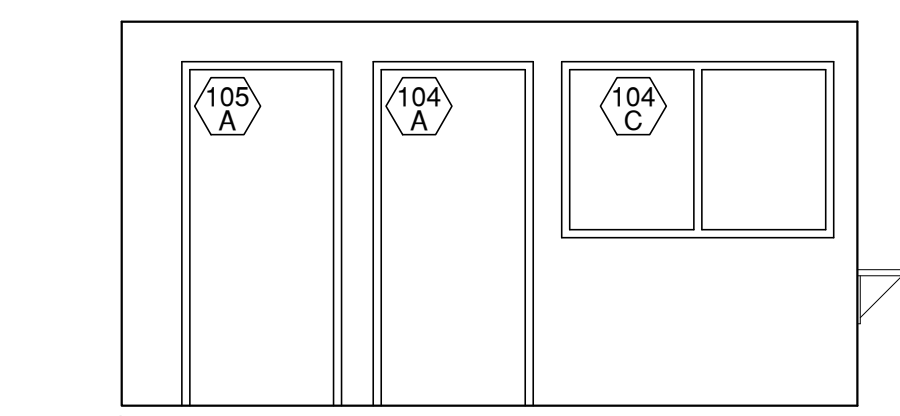
- GENERAL NOTES**
- PLAN DIMENSIONS ARE TO FACE OF STUD UNLESS NOTED OTHERWISE. DIMENSIONS SHOWN ARE APPROXIMATE. ALIGN NEW WALLS TO CENTERLINES OF MULLIONS OR FACE OF EXISTING WALLS AS APPLIES.
 - NEW INTERIOR PARTITIONS SHALL BE 5/8" TYPE "X" GYPSUM WALLBOARD ON EACH SIDE OF 3 5/8" 20 GA. METALFRAMING AT 16" O.C., INSULATE FULL THICKNESS WITH SOUND ATTENUATION BLANKETS. EXTEND ALL COMPONENTS TO UNDERSIDE OF EXISTING CEILING. INSULATE 12" BEYOND EACH SIDE OF WALL ABOVE THE CEILING WITH SOUND BATTS.



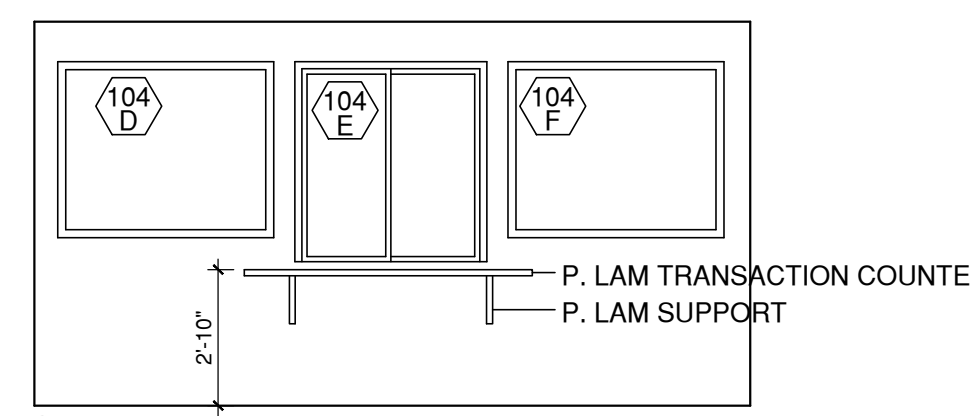
WINDOW ELEVATIONS
SCALE: 1/4" = 1'-0"



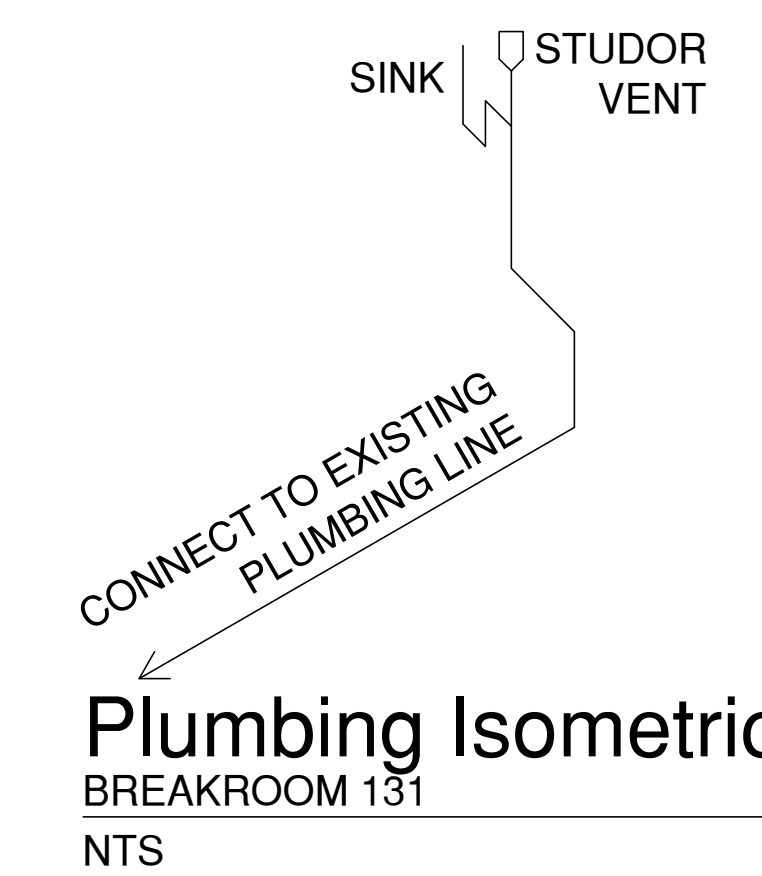
ROOM 104 - RECEPTION
SCALE: 1/4" = 1'-0"



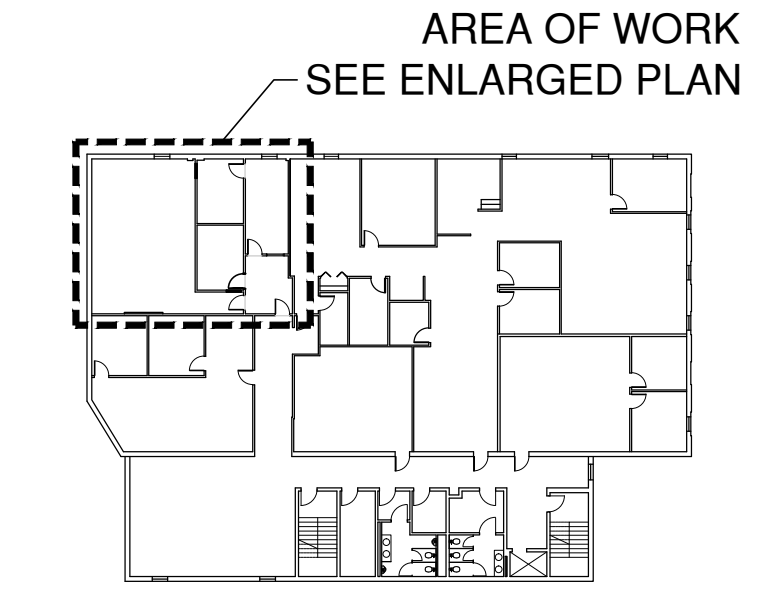
ROOM 103 - WAITING
SCALE: 1/4" = 1'-0"



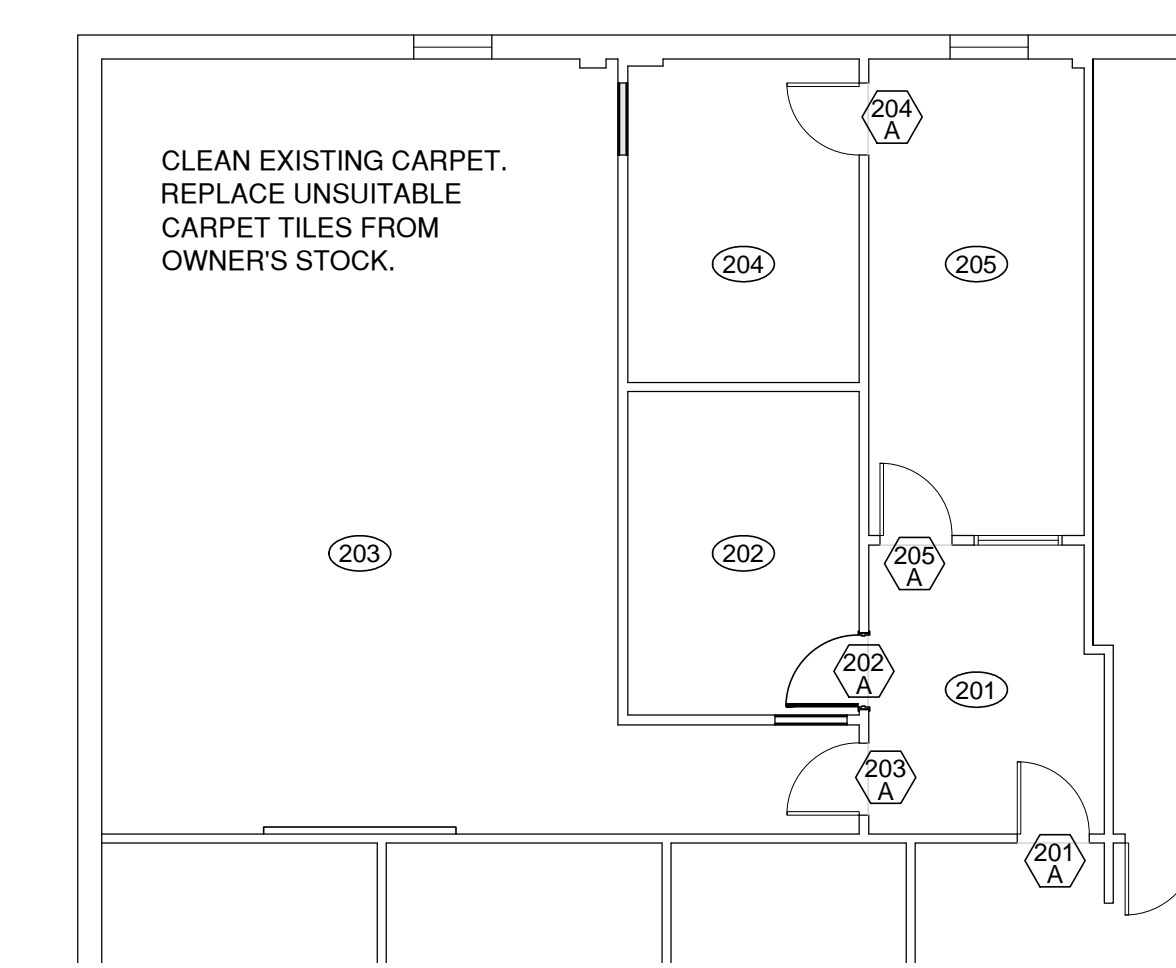
ROOM 103 - WAITING
SCALE: 1/4" = 1'-0"



Plumbing Isometric
BREAKROOM 131
NTS



Second Floor of Existing Bldg. Plan Key
Scale: 1/40" = 1'-0"



Second Floor Plan
Scale: 1/8" = 1'-0"

G|E|A ARCHITECTS

108 E. Jackson Street
Muncie, IN 47305-2806
765.289.9155
765.289.9214
gea@geearchitects.com

JOSEPH L. DOWD
REGISTERED ARCHITECT
No. 19300053
STATE OF INDIANA

Delaware County Community Corrections Interior Renovations
225 North High Street Muncie

Date: 5 October 2011

Job Number: 0629-02 **DWG File:**

Drawn by: LW, AE **Checked by:** JD

No.	Date	Revision