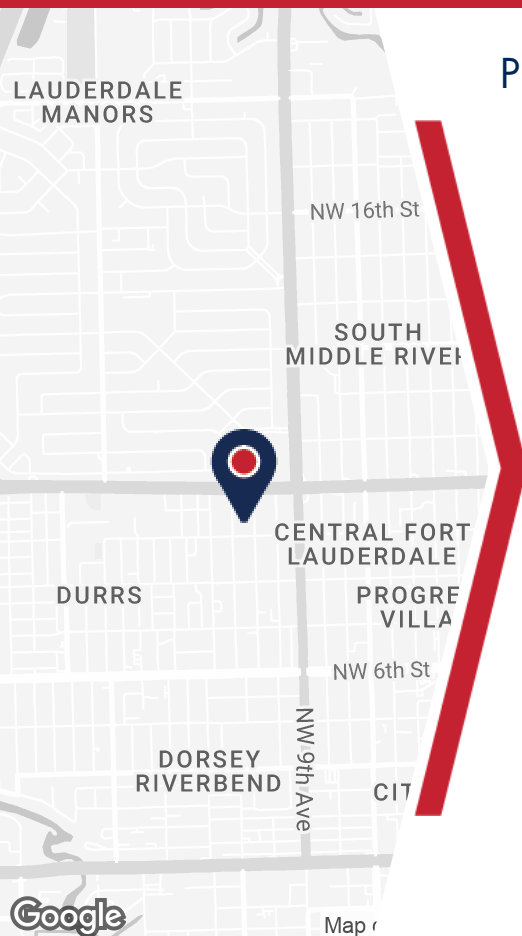


990 NW 11TH AVE

FORT LAUDERDALE, FL 33311



PROPERTY DETAILS

- 7,902 SF of Rentable Space
- 1,600 SF Office
- 2,000 SF Mezzanine
- Fenced Parking Lot
- 24' Clear Height
- 3-Phase Power
- 2 Dock-High Doors
- 1 Grade-Level Door
- Zoning: B-3, Fort Lauderdale

ABOUT PROPERTY



PRICE

\$21.00 SF/yr (MG)



YEAR BUILT

1981



AVAILABLE SF

7,902



PARKING

Fenced Lot



LOCATION

Fort Lauderdale, FL

For more information:

Jordan Beck

954.652.2033 | Jbeck@Bergercommercial.Com
bergercommercial.com

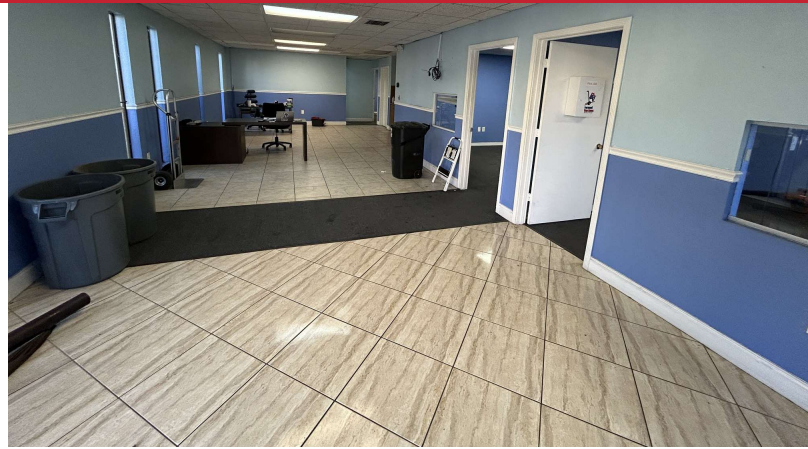
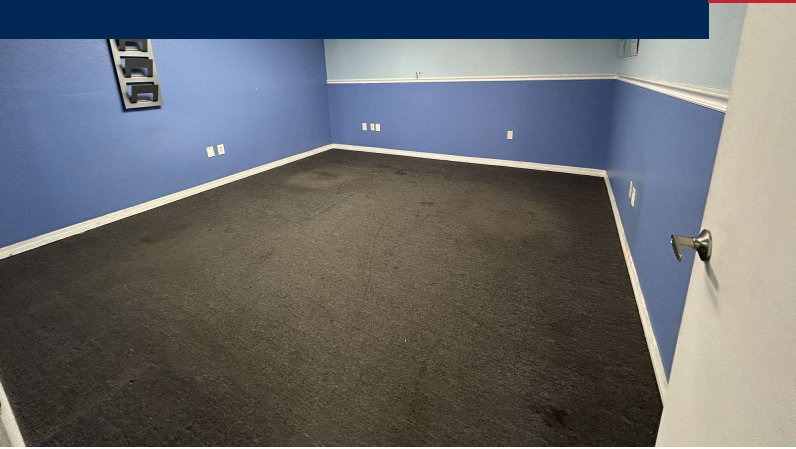
Calder Alfano

954.652.2041 | Calfano@Bergercommercial.Com



990 NW 11TH AVE

ADDITIONAL PHOTOS



For more information:

Jordan Beck

954.652.2033 | Jbeck@Bergercommercial.Com
bergercommercial.com

Calder Alfano

954.652.2041 | Calfano@Bergercommercial.Com



Information furnished regarding this property is from sources deemed reliable, but no warranty or representation as to the accuracy thereof and it is submitted subject to errors, omissions, prior sale, lease or withdrawal without prior notice.



For more information:

Jordan Beck

954.652.2033 | jbeck@Bergercommercial.com
bergercommercial.com

Calder Alfano

954.652.2041 | Calfano@Bergercommercial.com



COMMERCIAL BROKERAGE AND PROPERTY MANAGEMENT