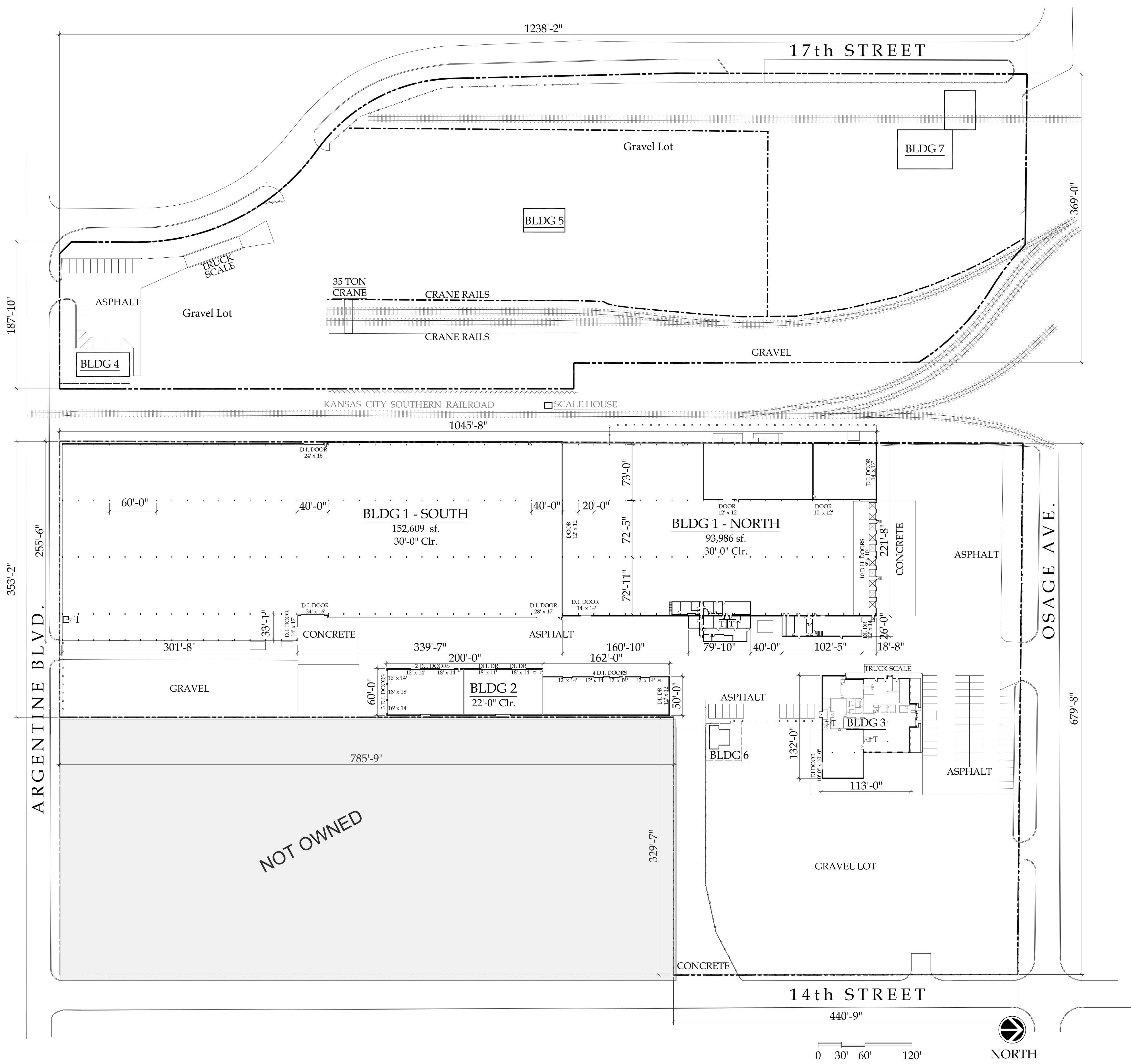


**SITE PLAN / AS BUILT**

**1413 PROPERTY**

1413 Osage Avenue  
 Kansas City, KS 66105



- Bldg 1 - 246,595 SF**  
 DH Doors - 10  
 DI Doors - 7  
 Ceiling - 30'  
 Columns - 20' x 70'
- Bldg 2 - 19,768 SF**  
 DH Doors - 1  
 DI Doors - 11  
 Ceiling - 19'-33'  
 Columns - Clear Span
- Bldg 3 - 12,864 SF**  
 DI Doors - 1  
 Ceiling - 12'  
 Columns - N/A
- Bldg 4 - 2,071 SF**  
 Ceilings - 11.5'  
 Columns - Clear Span
- Bldg 5 - 1,595 SF**  
 DI Doors - 2  
 Ceiling - 11.5'
- Bldg 6 - 655 SF**

**ACREAGE**  
 West Lot - 9.6 Ac +/-  
 East Lot - 13.35 Ac +/-

Updated  
 11/1/19



The Value Leader In Industrial Real Estate