

# Trammell Crow Center

Hospitality Suite Offerings

2001 Ross Ave #700, Dallas, TX 75201

COMMON DESK

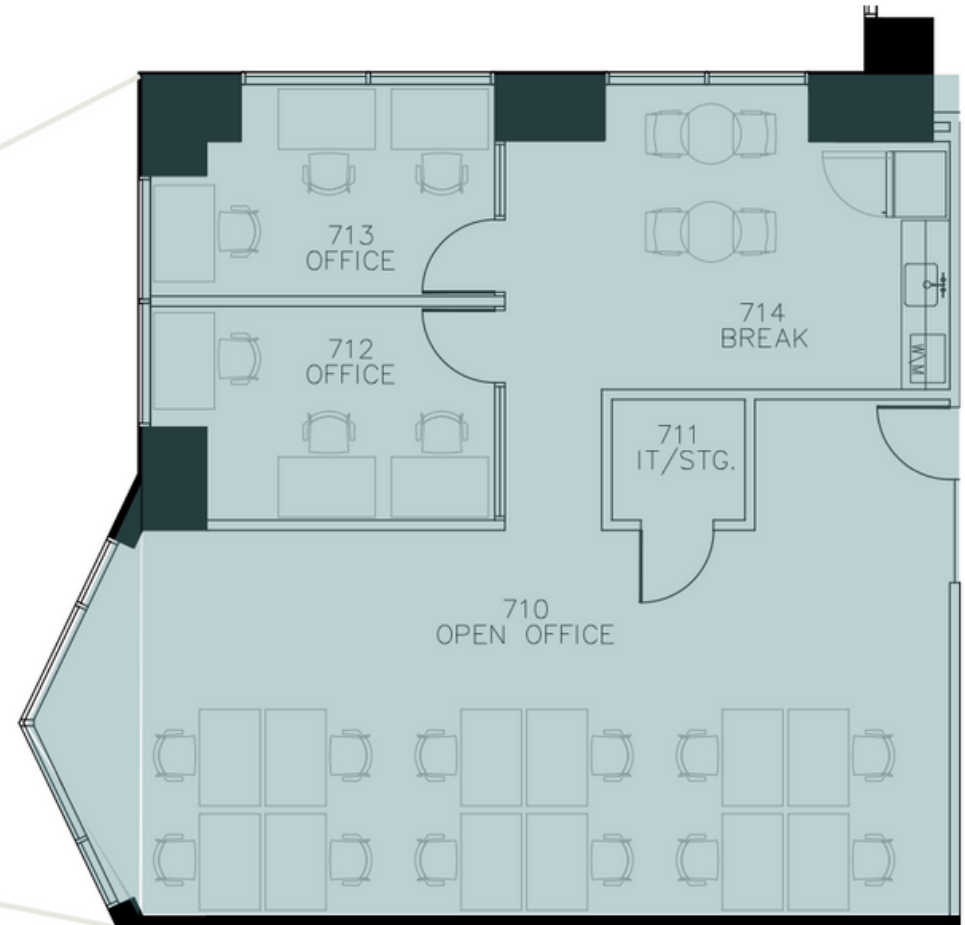
A modern office suite with several desks, ergonomic chairs, and a large window with blinds. The room is well-lit with pendant lights. A blue armchair is positioned near the window. The ceiling features exposed ductwork and lighting fixtures. The overall aesthetic is clean and professional.

**10-25  
person suite**

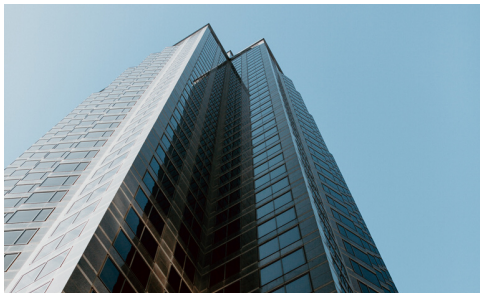
# Suite 7A

## Trammell Crow Center

- Ideal for teams of 10-20
- Private IT/storage space
- 2 large private offices
- Located near coworking, Fiction Coffee, Office 772
- Plug & play
- Kitchenette: sink, microwave, fridge



\*Floor plans are only meant to show plan in concept. All features, dimensions, finishes, and appliances should be reviewed in the agreement or physical space by member.



## COMMON DESK

Ally Reid

817.247.5898

[ally@thecommondesk.com](mailto:ally@thecommondesk.com)

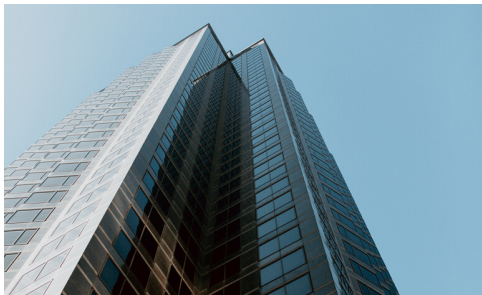
# Suite 7B

## Trammell Crow Center

- Ideal for teams of 15-25
- Private IT/storage space
- 3 large private offices
- Located near coworking, Fiction Coffee, Office 772
- Plug & play
- Kitchenette: sink, microwave, fridge



\*Floor plans are only meant to show plan in concept. All features, dimensions, finishes, and appliances should be reviewed in the agreement or physical space by member.



## COMMON DESK

Ally Reid

817.247.5898

[ally@thecommondesk.com](mailto:ally@thecommondesk.com)

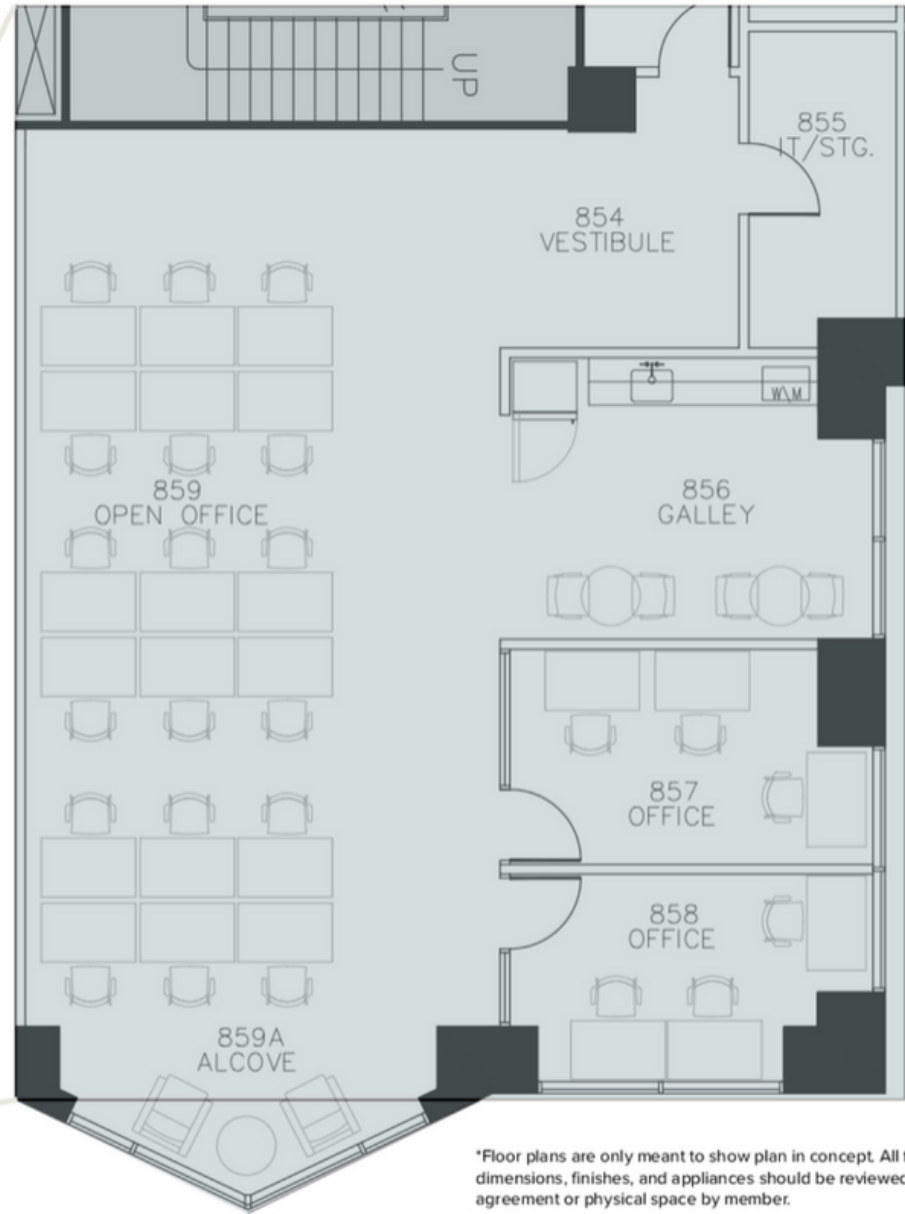
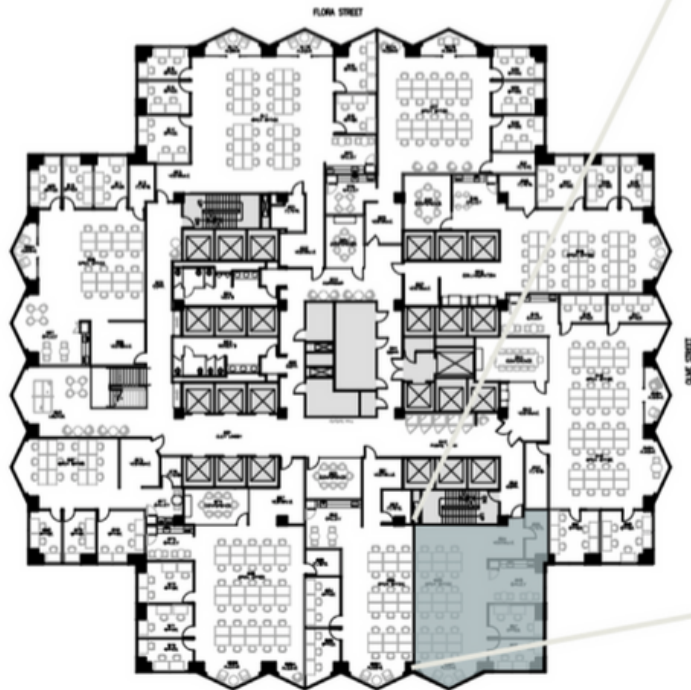
**15-30  
person suite**



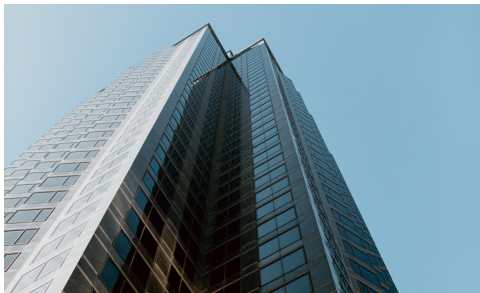
# Suite 8F

## Trammell Crow Center

- Ideal for teams of 15-25
- Private IT/storage space
- 2 large private offices
- Located on exclusive suite floor
- Plug & play
- Reception area
- Kitchenette: sink, microwave, fridge



\*Floor plans are only meant to show plan in concept. All features, dimensions, finishes, and appliances should be reviewed in the agreement or physical space by member.



## COMMON DESK

Ally Reid

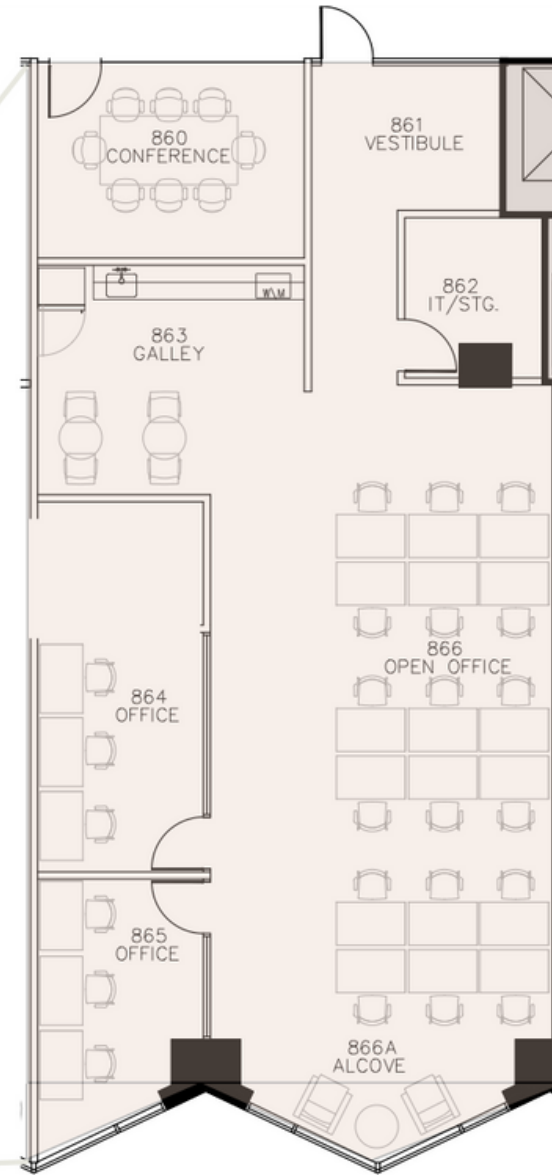
817.247.5898

[ally@thecommondesk.com](mailto:ally@thecommondesk.com)

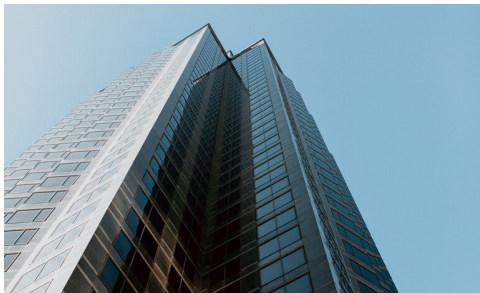
# Suite 8G

## Trammell Crow Center

- Ideal for teams of 18-28
- Private IT/storage space
- 2 large private offices
- Dedicated conference room
- Located on the exclusive suite floor
- Plug & play
- Reception area
- Kitchenette: sink, microwave, fridge



\*Floor plans are only meant to show plan in concept. All features, dimensions, finishes, and appliances should be reviewed in the agreement or physical space by member.



## COMMON DESK

Ally Reid

817.247.5898

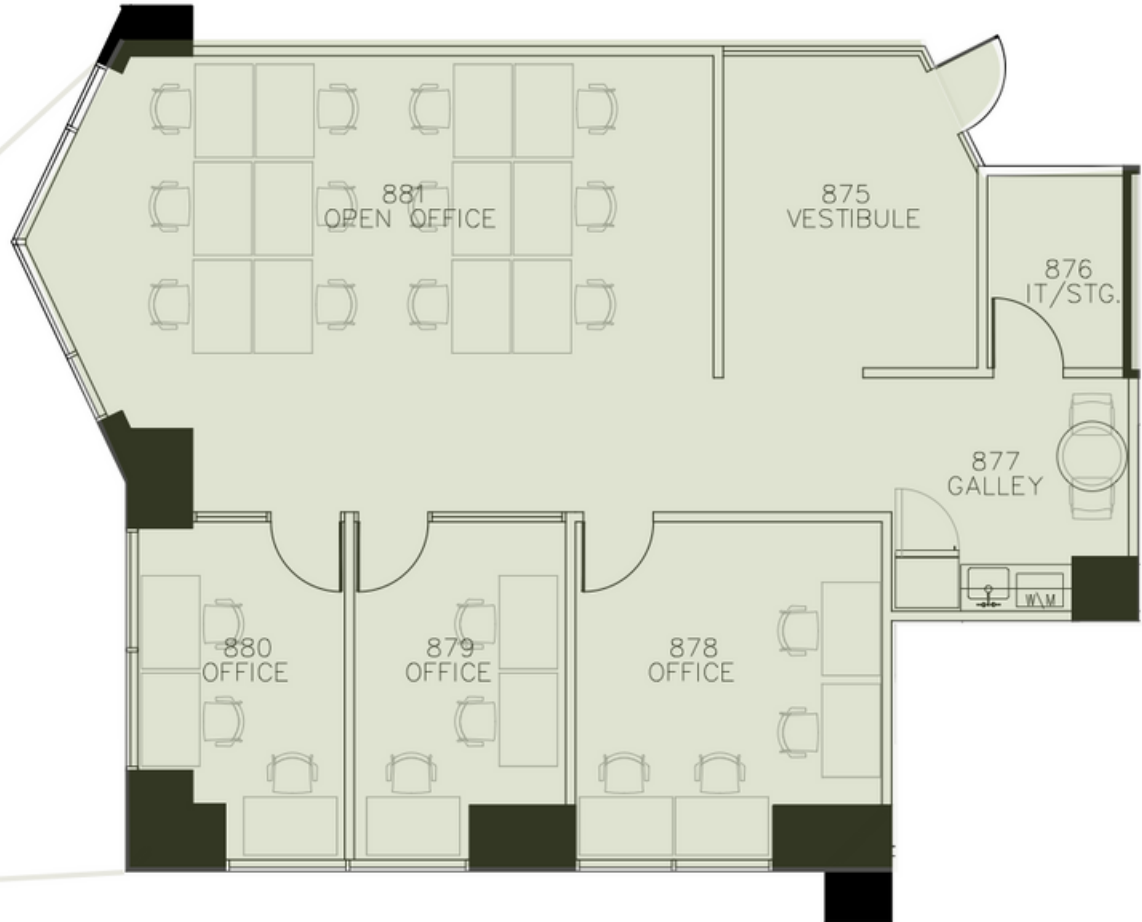
[ally@thecommondesk.com](mailto:ally@thecommondesk.com)

# Suite 8I

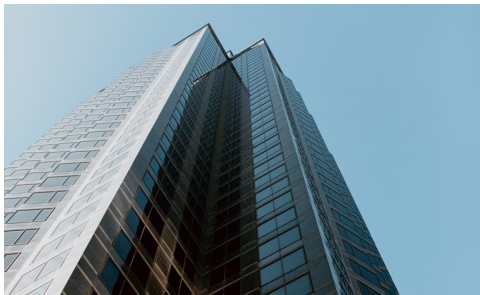
Trammell Crow Center



- Ideal for teams of 15-25
- 3 large private offices
- Located on the exclusive suite floor
- Plug & play
- Reception area
- Kitchenette: sink, microwave, fridge



\*Floor plans are only meant to show plan in concept. All features, dimensions, finishes, and appliances should be reviewed in the agreement or physical space by member.



**COMMON DESK**

Ally Reid

817.247.5898

[ally@thecommondesk.com](mailto:ally@thecommondesk.com)



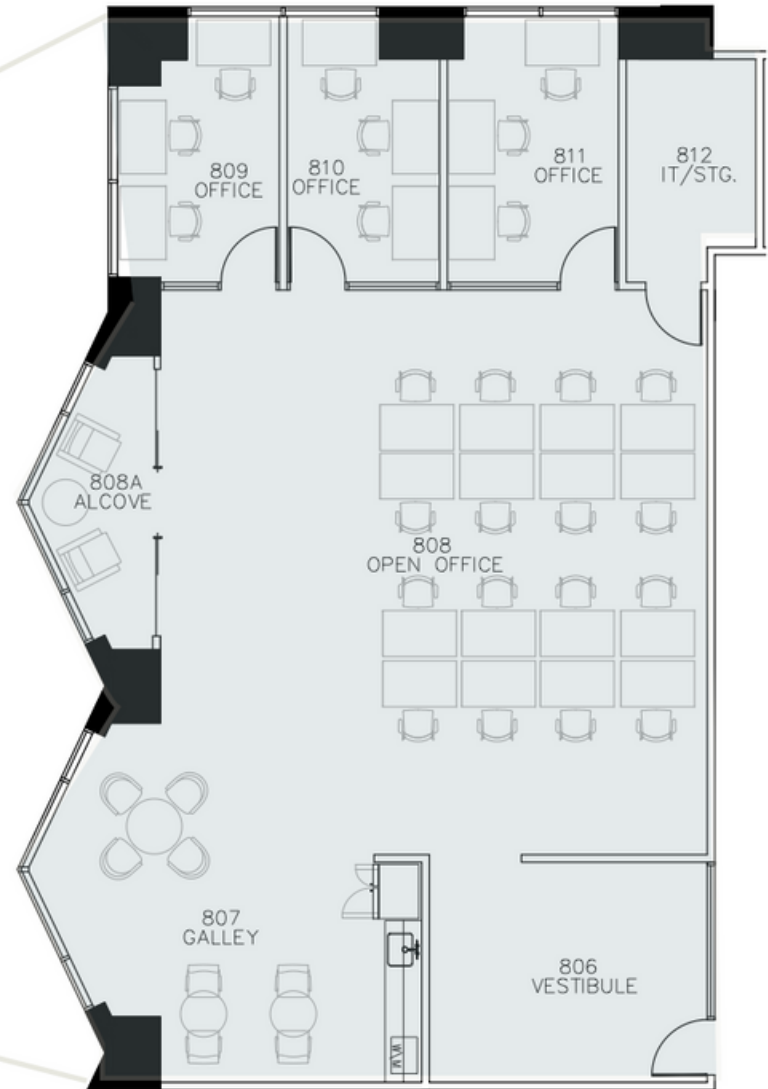
A photograph of a modern office suite. The room features several dark wood desks with black ergonomic chairs. Each desk is equipped with a teal desk lamp. In the background, a whiteboard is covered with various diagrams and notes. To the right, there is a glass-walled meeting room with a dark frame. The floor is covered in a light-colored, patterned carpet. The ceiling has exposed ductwork and circular recessed lights. The overall atmosphere is professional and contemporary.

**20-45  
person suite**

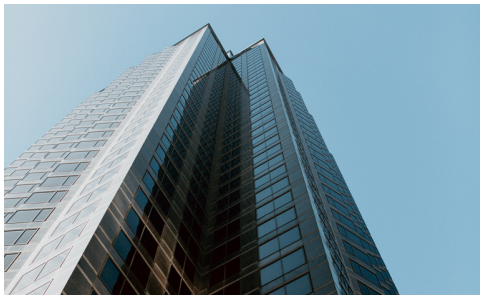
# Suite 8A

## Trammell Crow Center

- Ideal for teams of 19-29
- Private IT/storage space
- 3 large private offices
- Located on the exclusive suite floor
- Plug & play
- Reception area
- Kitchenette: sink, microwave, fridge



\*Floor plans are only meant to show plan in concept. All features, dimensions, finishes, and appliances should be reviewed in the agreement or physical space by memb



## COMMON DESK

Ally Reid

817.247.5898

[ally@thecommondesk.com](mailto:ally@thecommondesk.com)

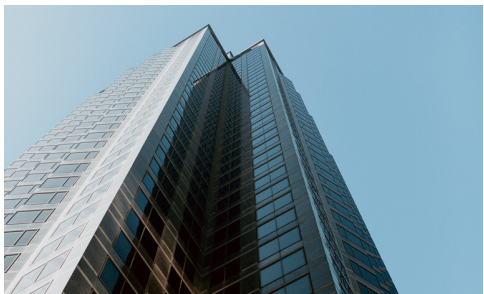
# Suite 8C

## Trammell Crow Center

- Ideal for teams of 23-33
- Private IT/storage space
- 3 large private offices
- Located on the exclusive suite floor
- Plug & play
- Reception area
- Kitchenette: sink, microwave, fridge



\*Floor plans are only meant to show plan in concept. All features, dimensions, finishes, and appliances should be reviewed in the agreement or physical space by member.



## COMMON DESK

Ally Reid

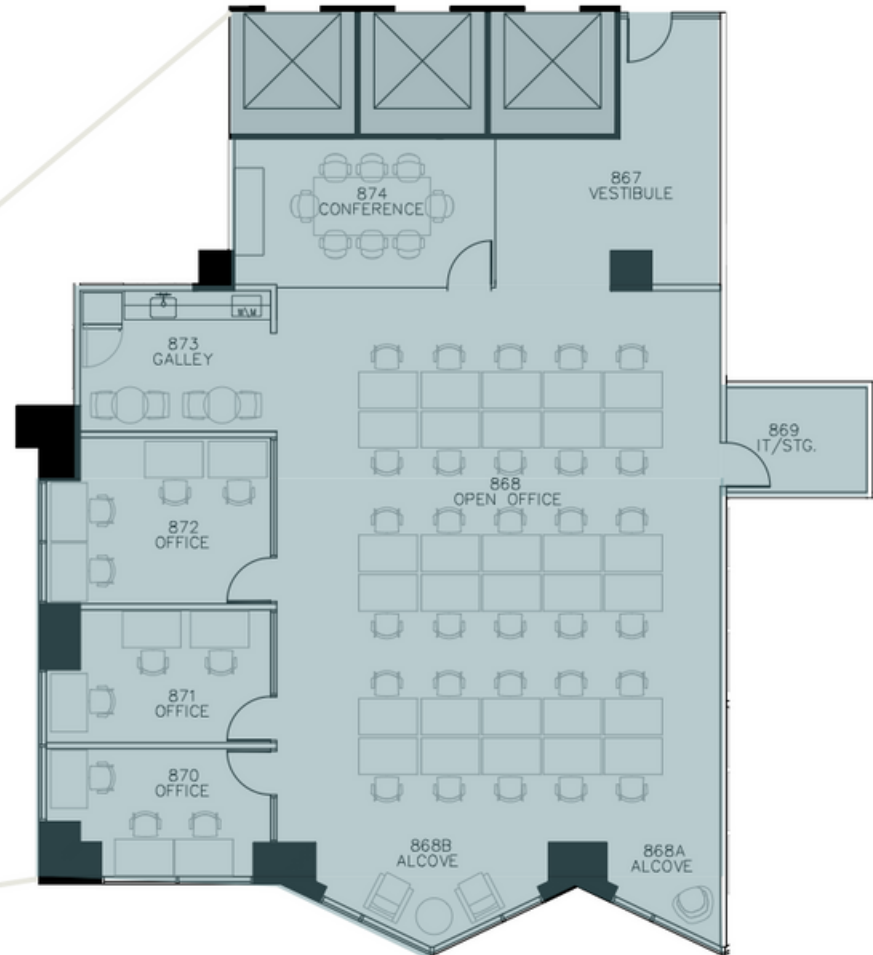
817.247.5898

[ally@thecommondesk.com](mailto:ally@thecommondesk.com)

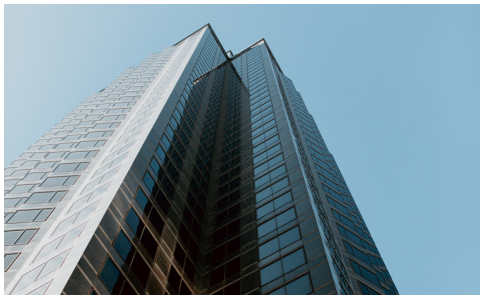
# Suite 8H

Trammell Crow Center

- Ideal for teams of 30-45
- 3 large private offices
- Dedicated conference room
- Located on the exclusive suite floor
- Plug & play
- Reception area
- Kitchenette: sink, microwave, fridge



\*Floor plans are only meant to show plan in concept. All features, dimensions, finishes, and appliances should be reviewed in the agreement or physical space by member



**COMMON DESK**

Ally Reid

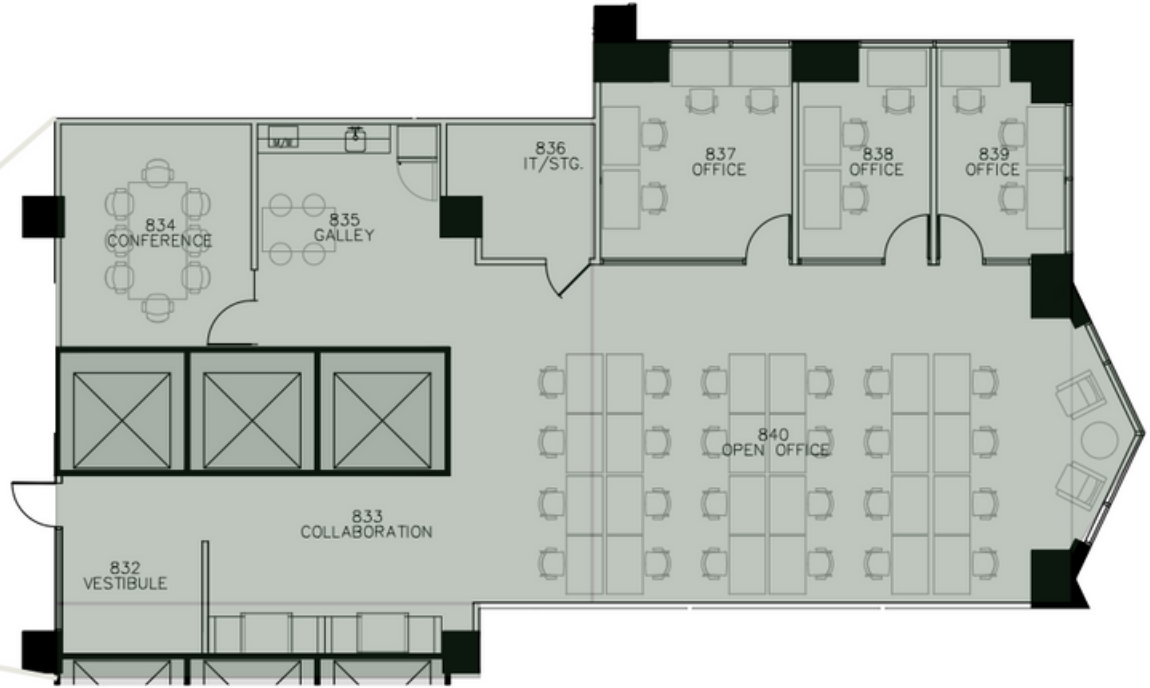
817.247.5898

[ally@thecommondesk.com](mailto:ally@thecommondesk.com)

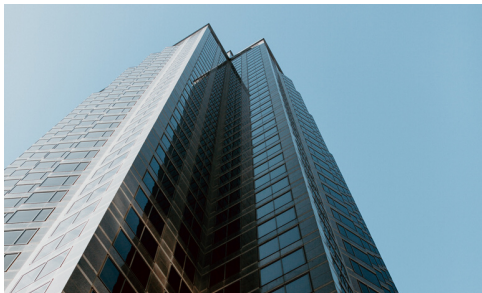
# Suite 8D

## Trammell Crow Center

- Ideal for teams of 25-40
- Private IT/storage space
- 3 large private offices
- Dedicated conference room
- Located on the exclusive suite floor
- Plug & play
- Reception area
- Kitchenette: sink, microwave, fridge



\*Floor plans are only meant to show plan in concept. All features, dimensions, finishes, and appliances should be reviewed in the agreement or physical space by member.



## COMMON DESK

Ally Reid

817.247.5898

[ally@thecommondesk.com](mailto:ally@thecommondesk.com)

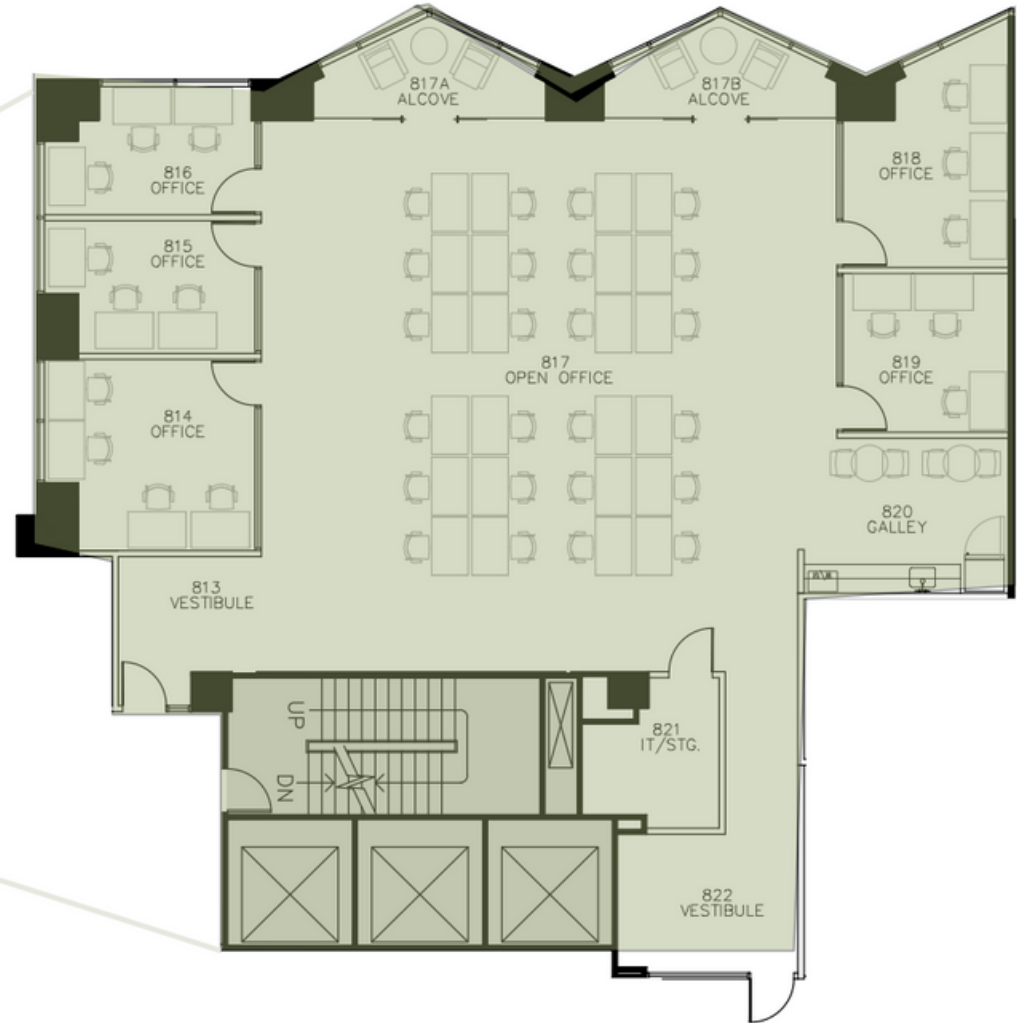
A modern office suite with multiple desks, chairs, and large windows overlooking a city. The office is furnished with dark wood desks, black office chairs, and several desk lamps. Large windows provide a view of a city skyline. The text "30-55 person suite" is overlaid in the center of the image.

**30-55  
person suite**

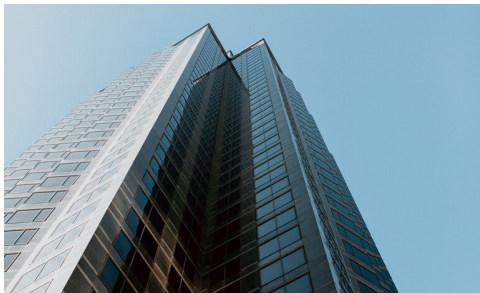
# Suite 8B

## Trammell Crow Center

- Ideal for teams of 30-40
- Private IT/storage space
- 5 large private offices
- Located on the exclusive suite floor
- Plug & play
- Reception area
- Kitchenette: sink, microwave, fridge



\*Floor plans are only meant to show plan in concept. All features, dimensions, finishes, and appliances should be reviewed in the agreement or physical space by member.



## COMMON DESK

Ally Reid

817.247.5898

[ally@thecommondesk.com](mailto:ally@thecommondesk.com)

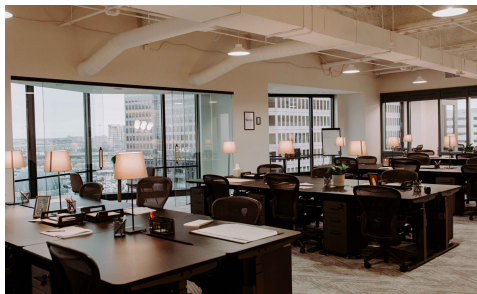
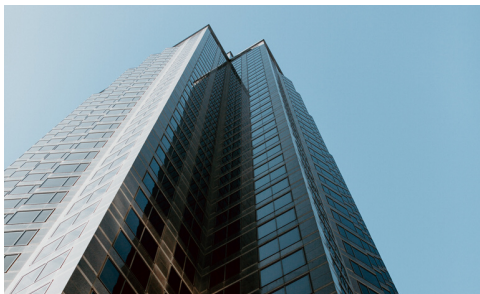
# Suite 8E

## Trammell Crow Center

- Ideal for teams of 40-55
- Private IT/storage space
- 4 large private offices
- Dedicated conference room
- Located on the exclusive suite floor
- Plug & play
- Reception area
- Kitchenette: sink, microwave, fridge



\*Floor plans are only meant to show plan in concept. All features, dimensions, finishes, and appliances should be reviewed in the agreement or physical space by member.



**COMMON DESK**

Ally Reid

817.247.5898

[ally@thecommondesk.com](mailto:ally@thecommondesk.com)



# Trammell Crow Center



Ready to call this building home?



**Ally Reid**

**817.247.5898**

**[ally@thecommondesk.com](mailto:ally@thecommondesk.com)**

**Nick Clark**

**214.478.6561**

**[nick@thecommondesk.com](mailto:nick@thecommondesk.com)**