

15,000 SF Turn-Key Office Space

Two-Story Open Work Area

2201 12th St N | Suite E
Fargo, ND 58102



Turn-Key Office Space

2201 12th St N. Suite E | Fargo, ND 58102

For Lease

The Property

CBRE is pleased to present 15,000 SF of turn-key office space. This open work space features a good mix of cubicles, private offices, conference rooms, kitchen/break rooms, and a large training room. Conveniently located 2 miles from I-29 and just off N. University Dr., this office space is move in ready and has plenty of employee parking.

Property Type	Office
Zoning	Commercial
Parcel Number	01-0010-00279-000
Total Building SF	25,000
Suite SF	15,000
Lease Rate	\$9.50/SF, NNN
CAM	\$1.10/SF
Number of Buildings	1
Year Built	1996
Construction	Metal w/ Steel Frame
Acres of Land	2.6
Features	<ul style="list-style-type: none">+ Turn-Key Office+ Two-Story Open Work Area+ Kitchens & Break Room+ Conference Rooms+ Large Training Room+ Mix of Cubicles & Private Offices+ Abundant Parking



Turn-Key Office Space

2201 12th St N. Suite E | Fargo, ND 58102

For Lease



Turn-Key Office Space

2201 12th St N. Suite E | Fargo, ND 58102

For Lease

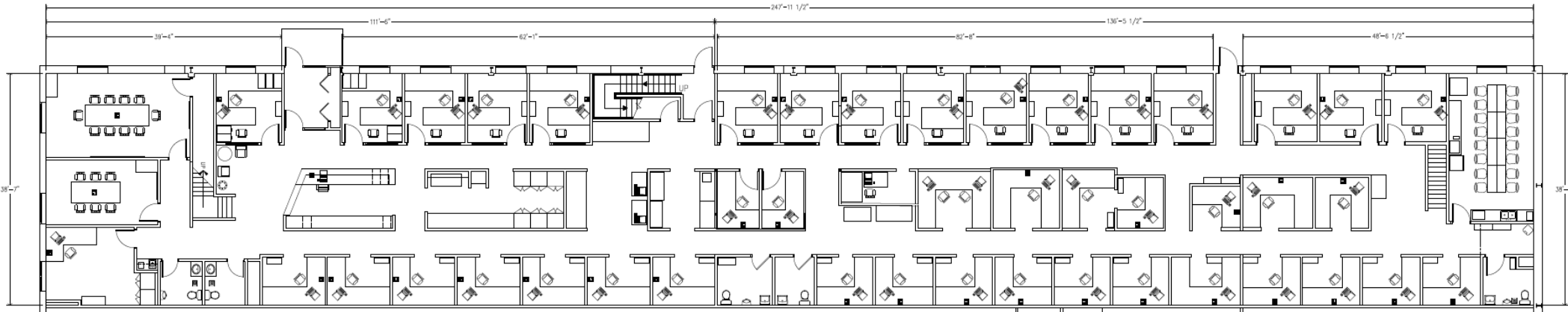


Turn-Key Office Space

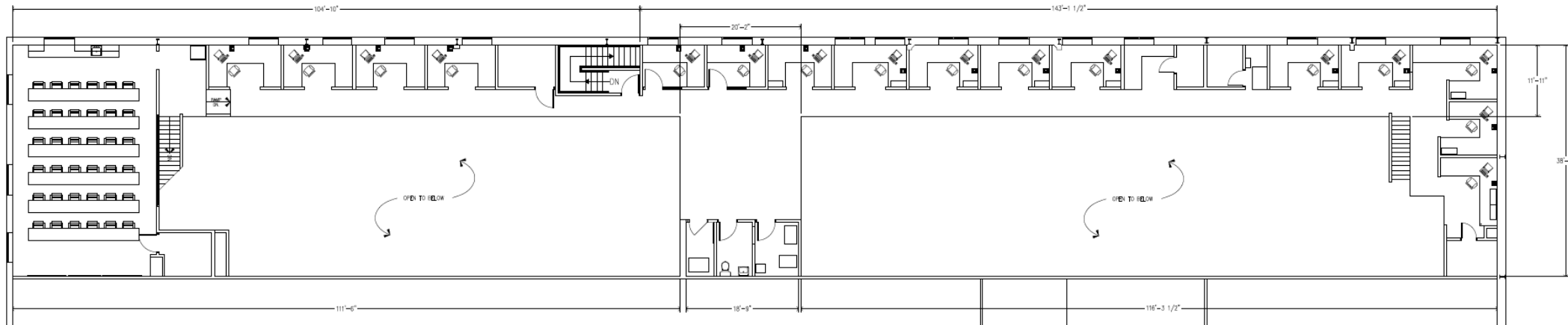
2201 12th St N. Suite E | Fargo, ND 58102

For Lease

Floor Plan - Main Floor



Floor Plan - Mezzanine Floor



Industrial Space

2201 12th St N. Suite E | Fargo, ND 58102

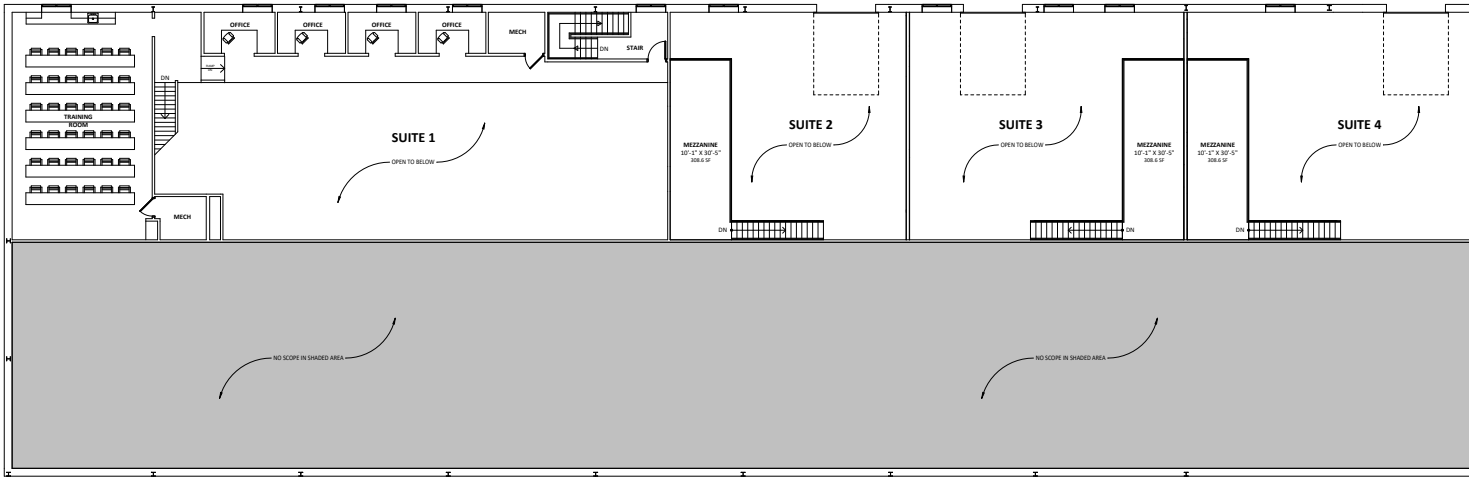
For Lease



Industrial Space

2201 12th St N. Suite E | Fargo, ND 58102

For Lease



SUITE 1

GROSS SQUARE FOOTAGE: 6,793.39' (BOMA)
 FIRST LEVEL SQUARE FOOTAGE: 4,522.42' (BOMA)
 MEZZANINE SQUARE FOOTAGE: 2,270.97' (BOMA)

SUITE 2

GROSS SQUARE FOOTAGE: 1,942.58' (BOMA)
 FIRST LEVEL SQUARE FOOTAGE: 1,625.48' (BOMA)
 MEZZANINE SQUARE FOOTAGE: 317.10' (BOMA)

SUITE 3

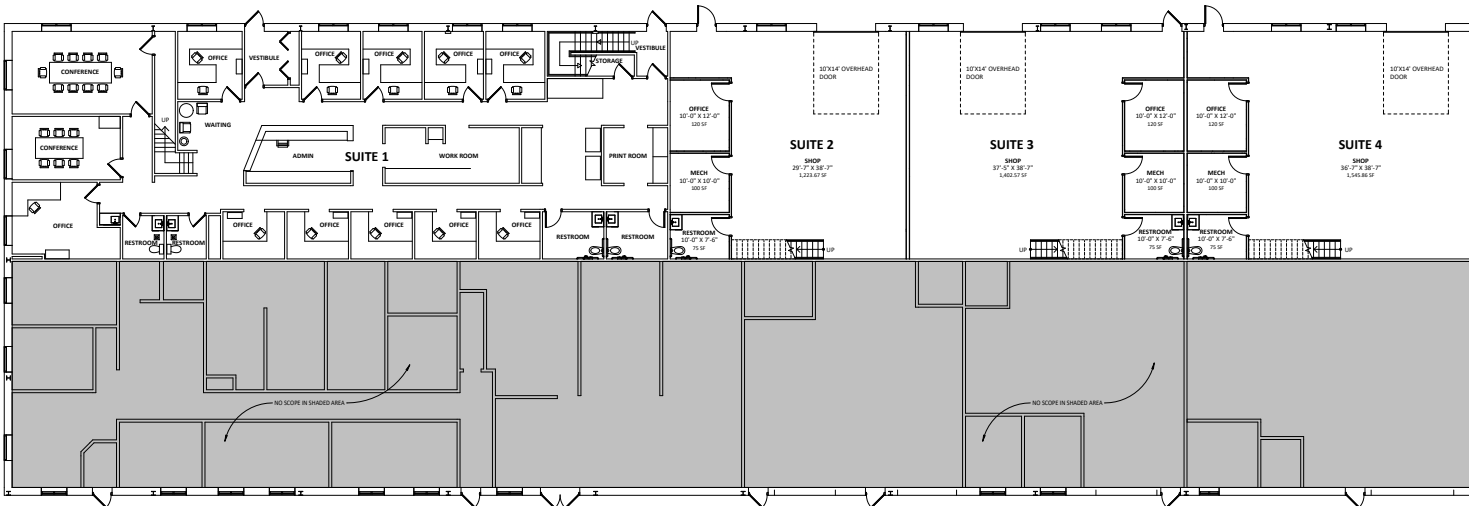
GROSS SQUARE FOOTAGE: 2,206.46' (BOMA)
 FIRST LEVEL SQUARE FOOTAGE: 1,889.36' (BOMA)
 MEZZANINE SQUARE FOOTAGE: 317.10' (BOMA)

SUITE 4

GROSS SQUARE FOOTAGE: 2,322.79' (BOMA)
 FIRST LEVEL SQUARE FOOTAGE: 2,005.69' (BOMA)
 MEZZANINE SQUARE FOOTAGE: 317.10' (BOMA)

MEZZANINE LEVEL FLOOR PLAN

1/8" = 1'-0"



FIRST LEVEL FLOOR PLAN

1/8" = 1'-0"



Turn-Key Office Space

2201 12th St N. Suite E | Fargo, ND 58102

For Lease



Contact Us

Chance Lindsey

Senior Vice President
+1 701 660 3500
chance.lindsey@cbre.com

Kyle Ferderer

First Vice President
+1 612 709 7950
kyle.ferderer@cbre.com

© 2025 CBRE, Inc. All rights reserved. This information has been obtained from sources believed reliable, but has not been verified for accuracy or completeness. You should conduct a careful, independent investigation of the property and verify all information. Any reliance on this information is solely at your own risk. CBRE and the CBRE logo are service marks of CBRE, Inc. All other marks displayed on this document are the property of their respective owners, and the use of such logos does not imply any affiliation with or endorsement of CBRE. Photos herein are the property of their respective owners. Use of these images without the express written consent of the owner is prohibited.

www.cbre.com

