



McNulty Group
Incorporated

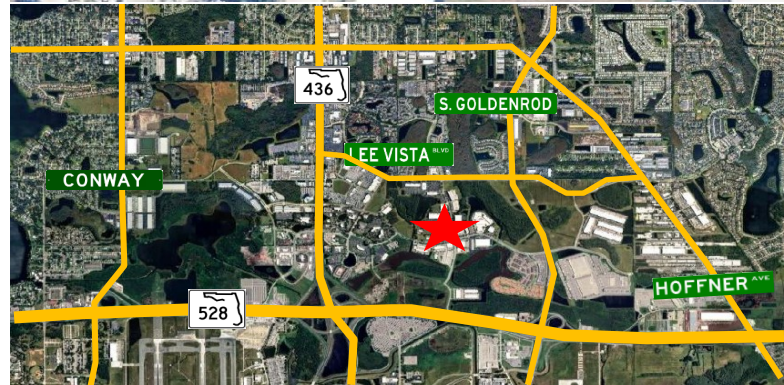
For Sale

6420 Hazeltine National Dr,
Orlando, FL 32822

\$15,750,000



Building Size:	49,900 ± SF
Warehouse:	41,351 ± SF
Office/Showroom:	8,549 ± SF
Ceiling Height:	21'-26'
Doors:	(6) Dock 9'x10' (1) Grade 12'x14'
Land Area:	3.79 Acres
Zoning:	I-P/AN
Construction:	Tilt Wall
Year Built:	2005
2025 Property Taxes	\$128,144.67
Additional Features:	New Roof 2023



McNulty Group, Inc. is the agent of the Landlord or Seller of this property and will be paid by the Landlord or Seller. All information furnished with respect to the subject property has been obtained from sources deemed reliable. No representation as to accuracy thereof is made. This offering is subject to errors, omissions, prior sales or withdrawal without notice.

Chuck McNulty

Broker

Chuck@mcnultygroupinc.com

(407) 668-5537 Direct

McNulty Group Inc.

2315 Lynx Lane, Suite 6

Orlando, Florida 32804

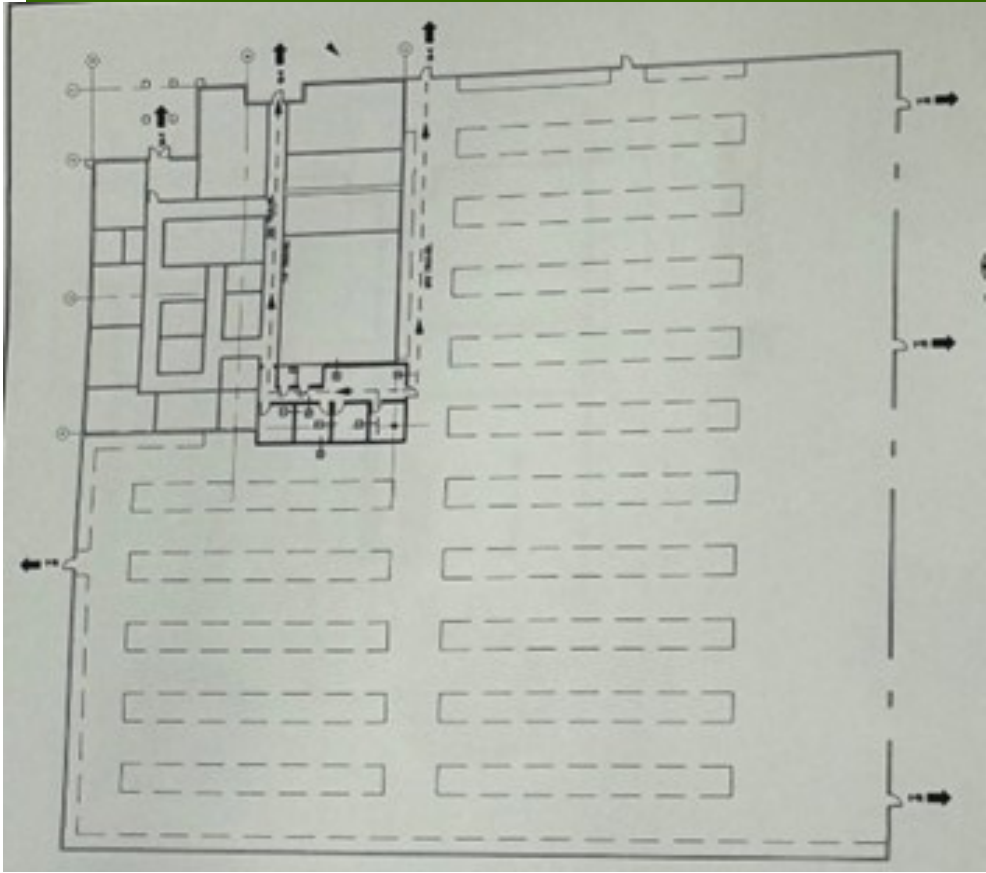
407-532-3441



FOR SALE

6420 Hazeltine National Dr,

Orlando, FL 32822



Chuck McNulty

Broker

Chuck@mcnultygroupinc.com

(407) 668-5537 Direct

mcnultygroupinc.com

McNulty Group Inc.

2315 Lynx Lane, Suite 6

Orlando, Florida 32804

407-532-3441