

THE WISCONSIN BUILDING DOWNTOWN MILWAUKEE



312 E. Wisconsin Ave. Milwaukee, WI RETAIL & OFFICE BUILDING For Sale or Lease

Exclusive Leasing Agent:
Protect Realty
128 Newberry Ave.
Libertyville, IL 60048
Wis. Lic. 58760-90

Tim Hart
Founder/Managing
Broker
847 924 5864 direct
tim@protectrealty.com

PROTECT  REALTY

Copyright © 2025 Protect Realty LLC. Information herein has been obtained from sources deemed reliable, however its accuracy cannot be guaranteed. The user is required to conduct their own due diligence and verification.

www.ProtectRealty.com

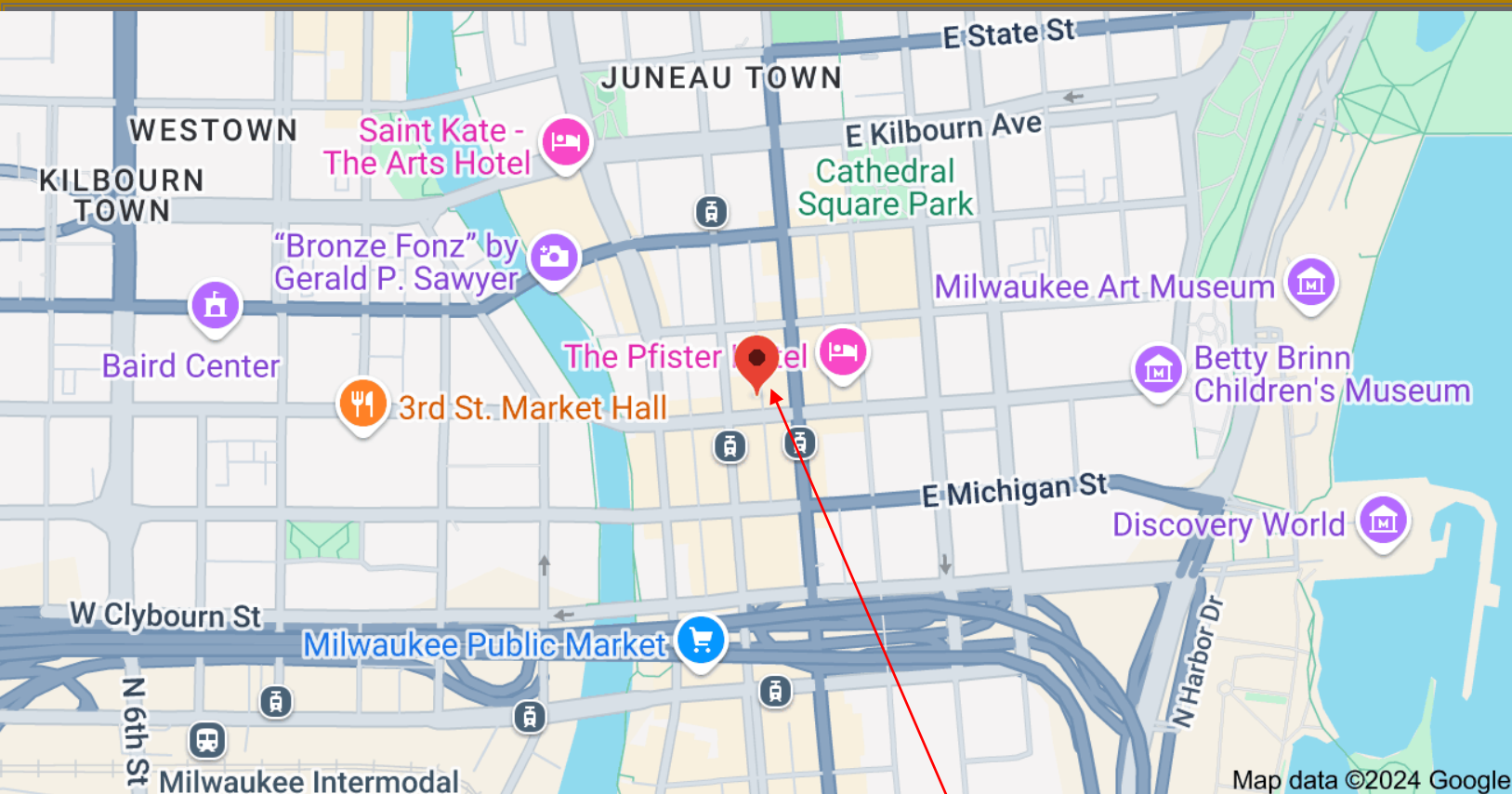
312 E. WISCONSIN AVE. > LOCATION HIGHLIGHTS



TIM HART

847-924-5864

TIM@PROTECTREALTY.COM



THE WISCONSIN BUILDING

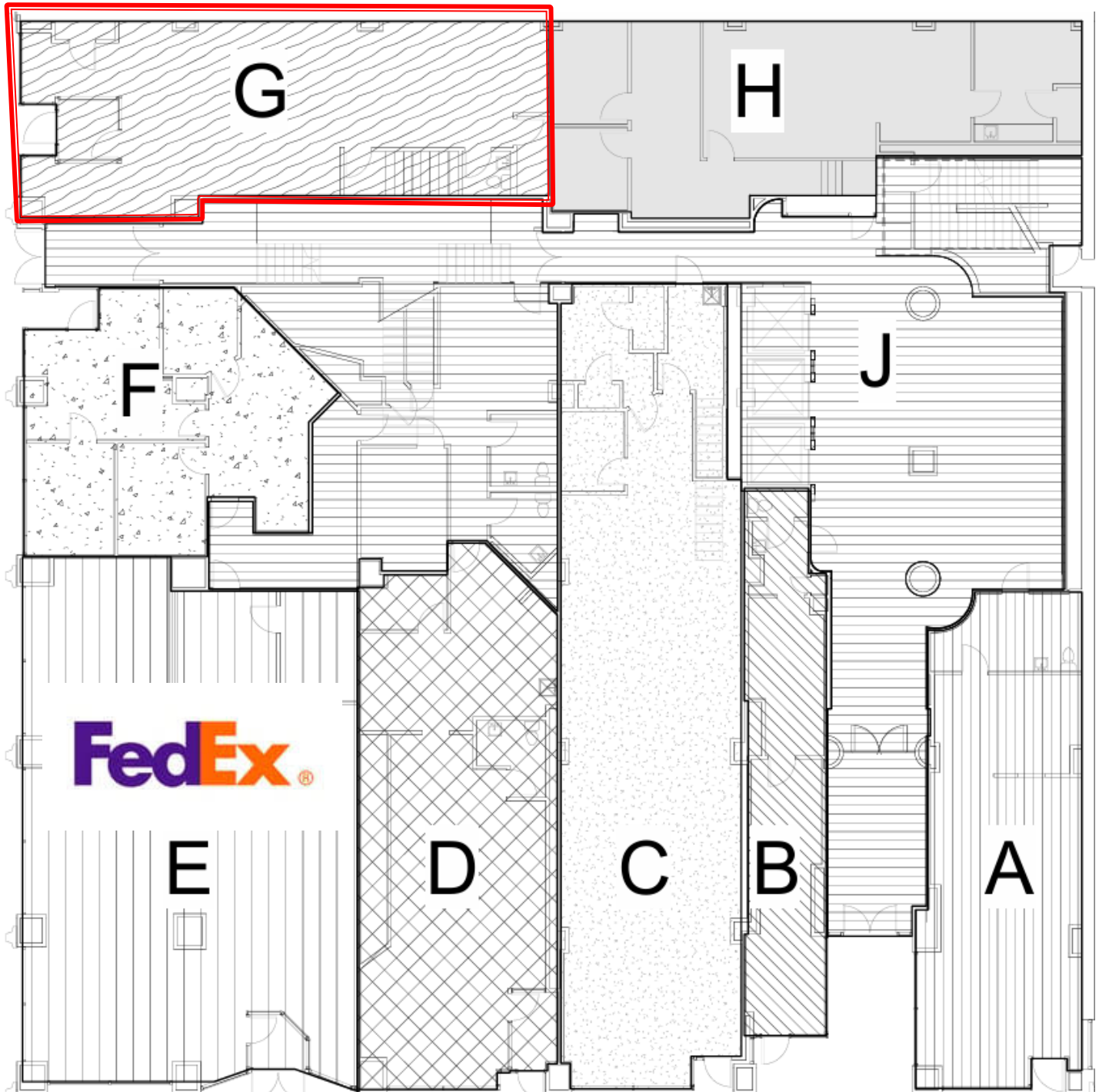
- Originally built in 1926/Renovated 2017
- 72,169 Total SF building size
- 2 Blocks from the river
- ½ Mile to the Lake
- Located in the heart of downtown
- Close to restaurants, Pfister hotel and the Wisconsin Athletic Club
- Public transportation and easily accessible by car. with parking garage adjacent to building
- 15 min to Milwaukee International airport



312 E. WISCONSIN AVE. > RETAIL SPACE



Unit G: 1,168 SF Retail Available
Access on N. Broadway



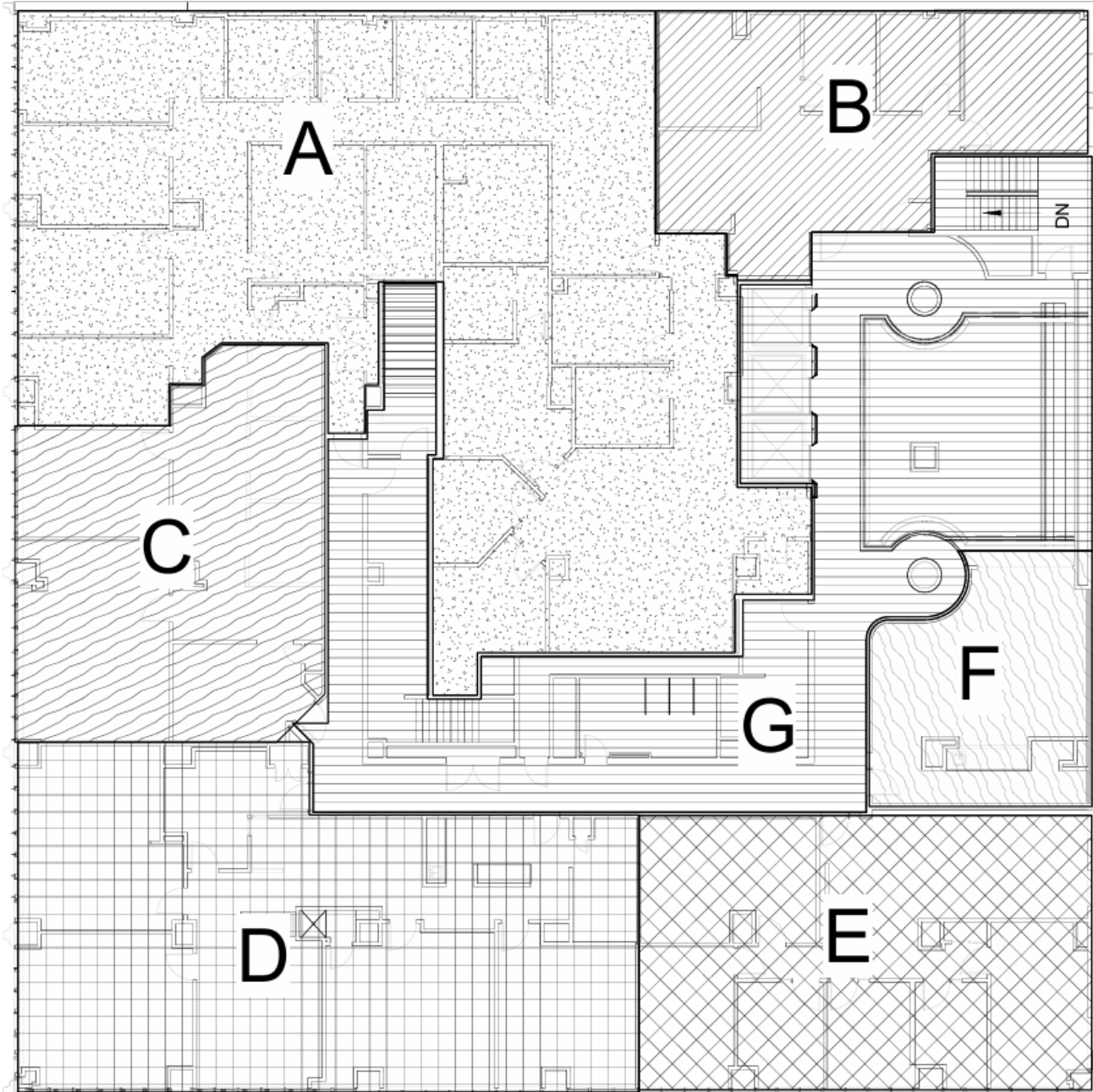
CALL TO DISCUSS PRICING

312 E. WISCONSIN AVE. > OFFICE SPACE



2nd Floor Office Space Available

1,074 up to 12,000 SF



SECOND FLOOR

A - 4151 S.F.

B - 1074 S.F.

C - 1329 S.F.

D - 2384 S.F.

E - 1531 S.F.

F - 623 S.F.

G - 3017 S.F.

TOTAL: 14,109 S.F.

CALL TO DISCUSS PRICING

312 E. WISCONSIN AVE. > MEDICAL SPACE



48,000 SF Inpatient Treatment Facility Floors 3 through 6

Fully furnished turn-key inpatient treatment facility with 52 beds

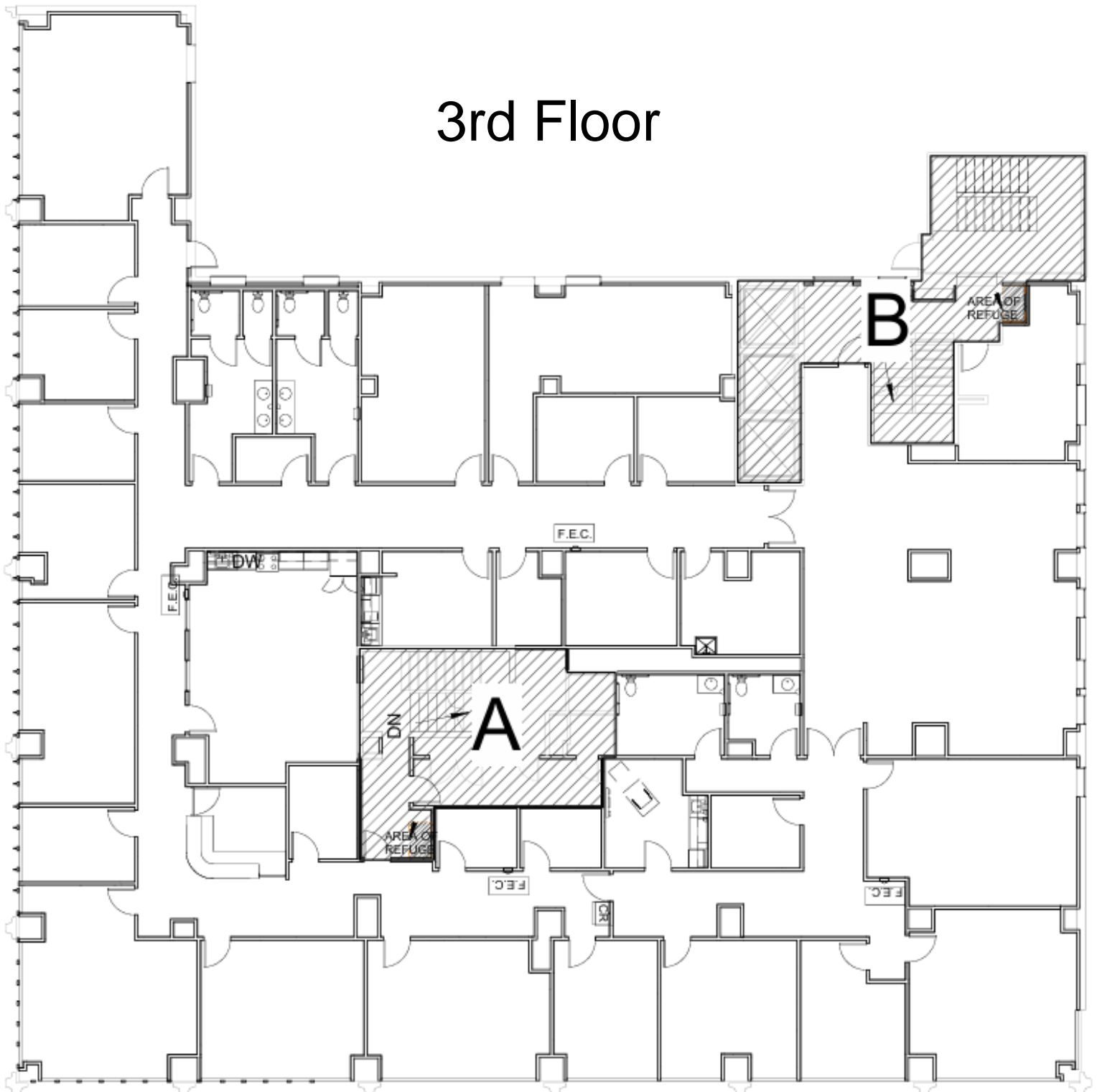


312 E. WISCONSIN AVE. > MEDICAL SPACE



48,000 SF Inpatient Treatment Facility Floors 3 through 6

3rd Floor

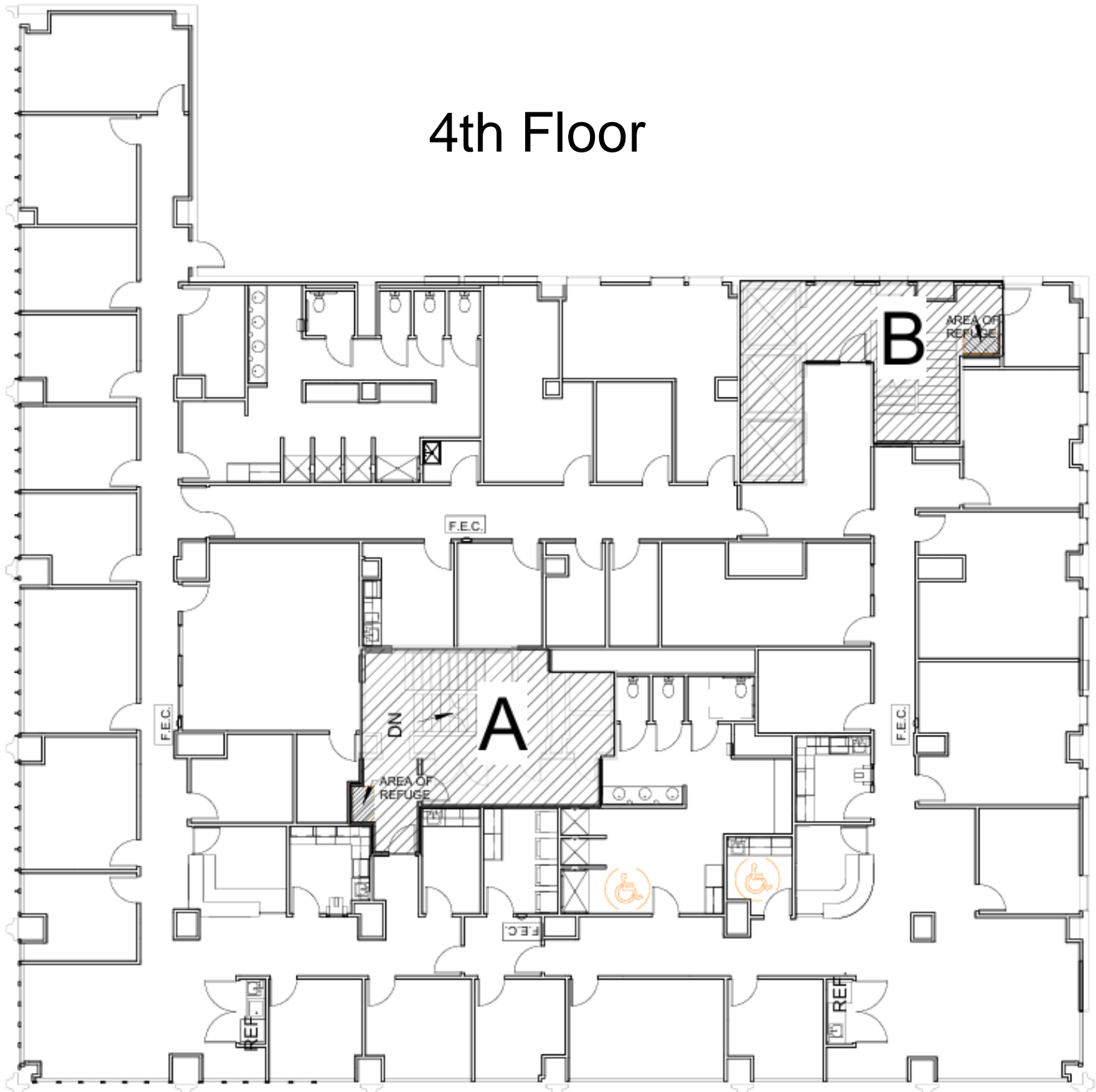


312 E. WISCONSIN AVE. > MEDICAL SPACE



48,000 SF Inpatient Treatment Facility Floors 3 through 6

4th Floor



312 E. WISCONSIN AVE. > MEDICAL SPACE



48,000 SF Inpatient Treatment Facility Floors 3 through 6

5th Floor

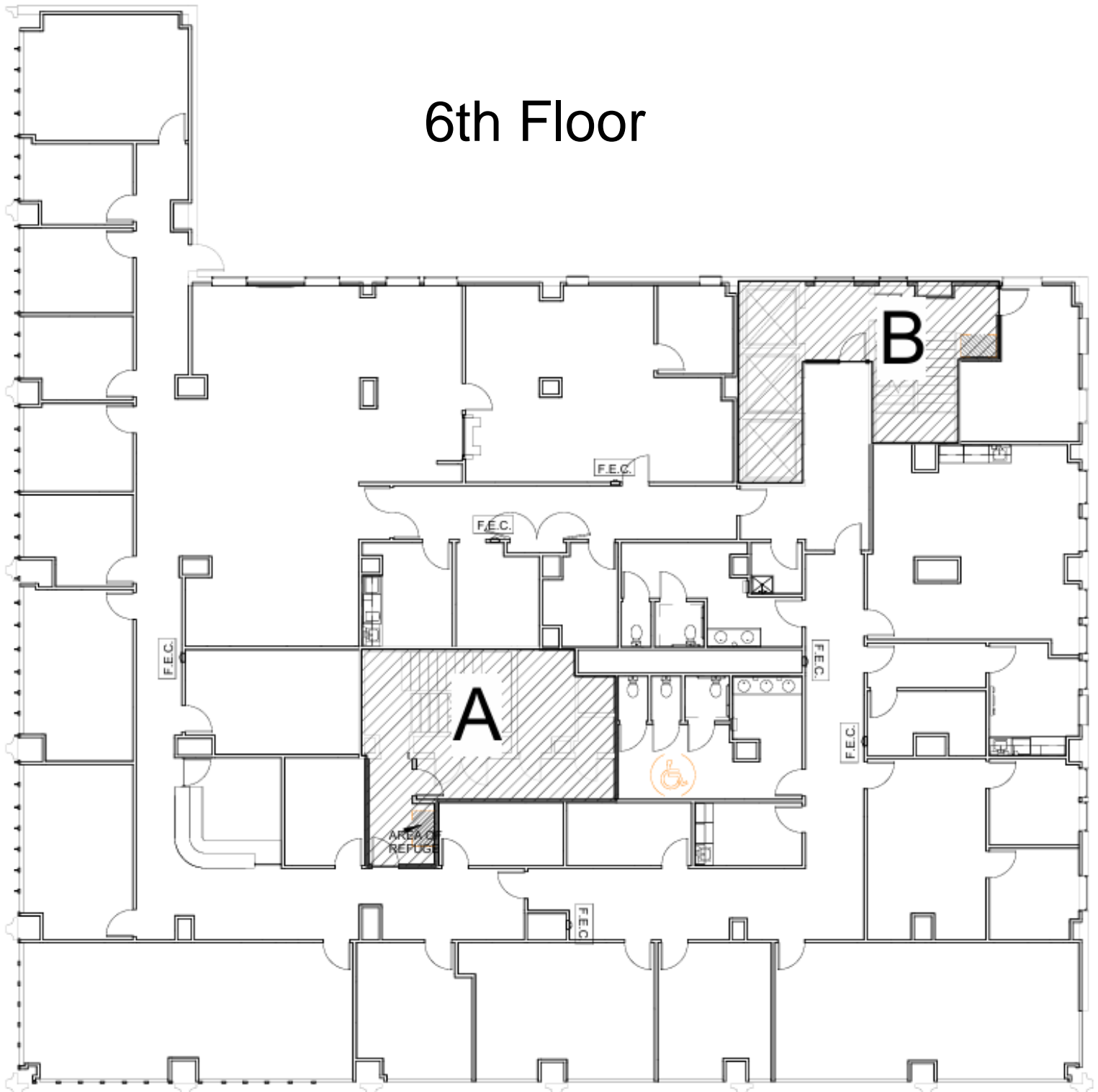


312 E. WISCONSIN AVE. > MEDICAL SPACE



48,000 SF Inpatient Treatment Facility Floors 3 through 6

6th Floor



312 E. WISCONSIN AVE. > GENERAL PICTURES

TIM HART

847-924-5864

TIM@PROTECTREALTY.COM



Main Building Lobby



2nd Floor raw office unit



TIM HART

847-924-5864

TIM@PROTECTREALTY.COM

PROTECT REALTY

www.ProtectRealty.com