

MEADOWDALE LYNNWOOD

*20,224 SF Church and Retail
Building with 10,000 SF Secured
Garage for Sale in Lynnwood, WA*

16824 44TH AVE W, LYNNWOOD, WA



Property Features

30,336 total SF

Three floors of 10,112 SF each

Vacant church space on the second floor,
100% leased retail on first floor to 7 tenants, and
secured parking w/storage on basement level

0.93 total acres

67 parking stalls

Church can seat ±200 people

Zoned GC (General Commercial)

→ [VIEW ZONING DETAILS](#)

\$6,720,000

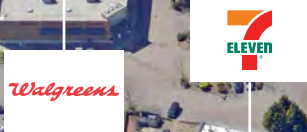
SALE PRICE

30,336

BUILDING SF



LOCATED *OFF SR-99* WITH HIGH TRAFFIC COUNTS & *NUMEROUS AMENITIES*



SUBJECT PROPERTY



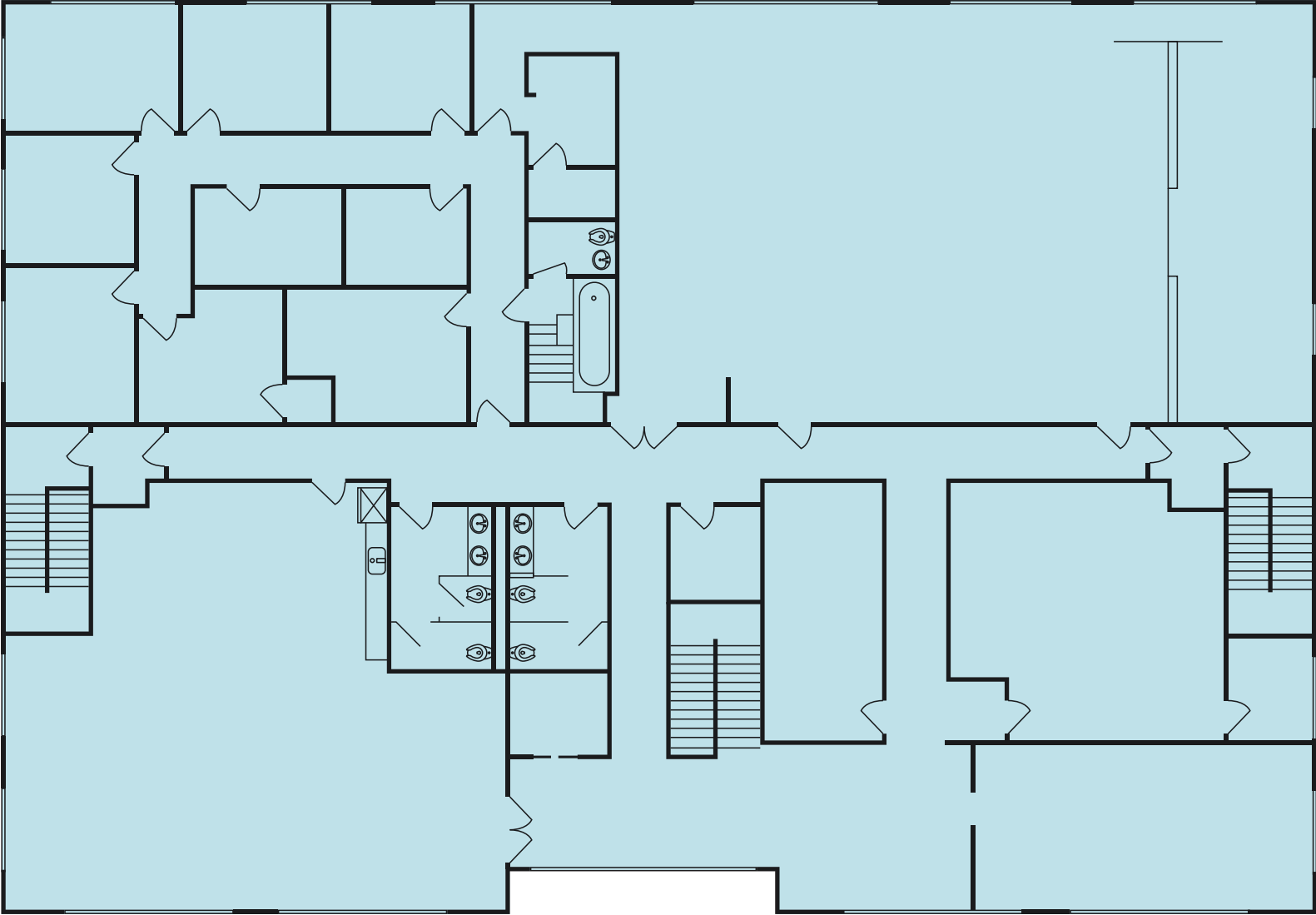
32,600+ VPD

17,320+ VPD

9,630+ VPD



SECOND FLOOR PLAN



MEADOWDALE LYNNWOOD







Exclusively listed by

STEVE PELLUER
425.450.1180
steve.pelluer@kidder.com

ZEKE PELLUER
425.614.0082
zeke.pelluer@kidder.com

KIDDER.COM