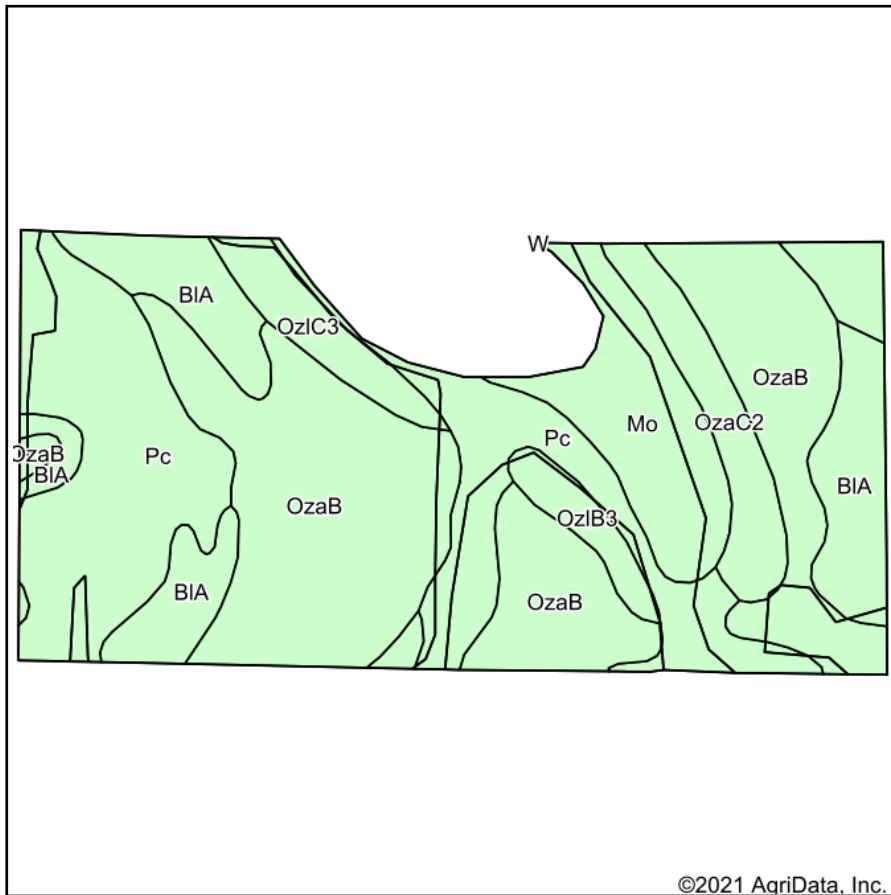
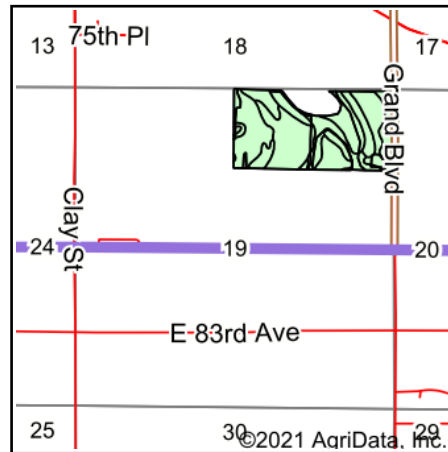


# Soils Map



Soils data provided by USDA and NRCS.



State: **Indiana**  
 County: **Lake**  
 Location: **19-35N-7W**  
 Township: **Ross**  
 Acres: **72.17**  
 Date: **4/22/2021**

Maps Provided By:  
  
 CUSTOMIZED ONLINE MAPPING  
 © AgriData, Inc. 2021 [www.AgriDataInc.com](http://www.AgriDataInc.com)



Area Symbol: IN089, Soil Area Version: 23

Code	Soil Description	Acres	Percent of field	Non-Irr Class *c	Alfalfa hay	Corn	Corn silage	Grass legume hay	Grass legume pasture	Kentucky bluegrass	Oats	Pasture	Soybeans	Winter wheat	*n NCCPI Soybeans
OzaB	Ozaukee silt loam, 2 to 6 percent slopes	26.63	36.9%	Ile		131	21	4	8	5	74		41	52	59
Pc	Pewamo silty clay loam	21.05	29.2%	IIw		160		5				11	44	64	64
BIA	Blount silt loam, Lake Michigan Lobe, 0 to 2 percent slopes	10.02	13.9%	IIw		124		4	6		59		42	51	50
Mo	Milford silt loam, overwash	6.59	9.1%	IIw		160		5				11	44	64	75
OzaC2	Ozaukee silt loam, 6 to 12 percent slopes, eroded	3.74	5.2%	IIle	4	117	20	3	5	4	62		36	47	40
OziC3	Ozaukee silty clay loam, 6 to 12 percent slopes, severely eroded	2.54	3.5%	IVe	4	105	17	3	5	4	56		33	42	27
OziB3	Ozaukee silty clay loam, 2 to 6 percent slopes, severely eroded	1.60	2.2%	IIle		117		4				8	40	52	28
<b>Weighted Average</b>					<b>0.3</b>	<b>139.2</b>	<b>9.4</b>	<b>4.3</b>	<b>4.2</b>	<b>2.2</b>	<b>40.7</b>	<b>4.4</b>	<b>41.7</b>	<b>55.8</b>	<b>*n 57.9</b>

\*n: The aggregation method is "Weighted Average using all components"

\*c: Using Capabilities Class Dominant Condition Aggregation Method

Soils data provided by USDA and NRCS.