

Kinect @ Burien

RETAIL FOR LEASE

631 SW 150th Street • Burien, WA 98166

NEW CONSTRUCTION - NOW AVAILABLE

± 2,123 - 8,909 SF

PRIME RETAIL FOR
LEASE ON THE
GROUND FLOOR OF
230 UNIT PROJECT,
KINECT @ BURIEN

Adjacent to Burien Town Square, this new construction offers up to 8,909 continuous square feet of retail space. Local restaurants, boutique retail, and year-round activities, including a downtown Farmer's Market and monthly art walks, bring high foot traffic and visibility to the immediate area. Join the vibrant and charming downtown Burien business community.

Tiffini Connell | Jonathan Willett | Kara Farley

(206) 283-5212

www.wccommercialrealty.com



DISCLAIMER: The above information has been secured from sources believed to be reliable, however, no representations are made to its accuracy. Prospective tenants or buyers should consult their professional advisors and conduct their own independent investigation. Site plan and configuration are subject to change. Properties are subject to change in price and/or availability without notice. West Coast Commercial Realty, LLC

WCCR

West Coast Commercial Realty

Kinect @ Burien

631 SW 150th Street • Burien, WA 98166



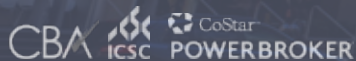
Tiffini Connell

Jonathan Willett

Kara Farley

(206) 283-5212

www.wccommercialrealty.com



DISCLAIMER: The above information has been secured from sources believed to be reliable, however, no representations are made to its accuracy. Prospective tenants or buyers should consult their professional advisors and conduct their own independent investigation. Site plan and configuration are subject to change. Properties are subject to change in price and/or availability without notice. West Coast Commercial Realty, LLC

WCCR

West Coast Commercial Realty

Kinect @ Burien

631 SW 150th Street • Burien, WA 98166



631 Southwest 150th Street has a Walk Score of 94 out of 100. This location is a Walker's Paradise so daily errands do not require a car.

This location is in Burien. Nearby parks include Town Square Park, Dottie Harper Park and Lakeview Park.

DEMOGRAPHICS



TOTAL POPULATION

1-Mile: 26,556

2-Mile: 54,747

5-Mile: 207,398



TOTAL EMPLOYEES

1-Mile: 11,867

2-Mile: 15,338

5-Mile: 98,018



AVERAGE HOUSEHOLD INCOME

1-Mile: \$95,986

2-Mile: \$103,280

5-Mile: \$102,735



Tiffini Connell | Jonathan Willett | Kara Farley

(206) 283-5212

www.wccommercialrealty.com



DISCLAIMER: The above information has been secured from sources believed to be reliable, however, no representations are made to its accuracy. Prospective tenants or buyers should consult their professional advisors and conduct their own independent investigation. Site plan and configuration are subject to change. Properties are subject to change in price and/or availability without notice. West Coast Commercial Realty, LLC

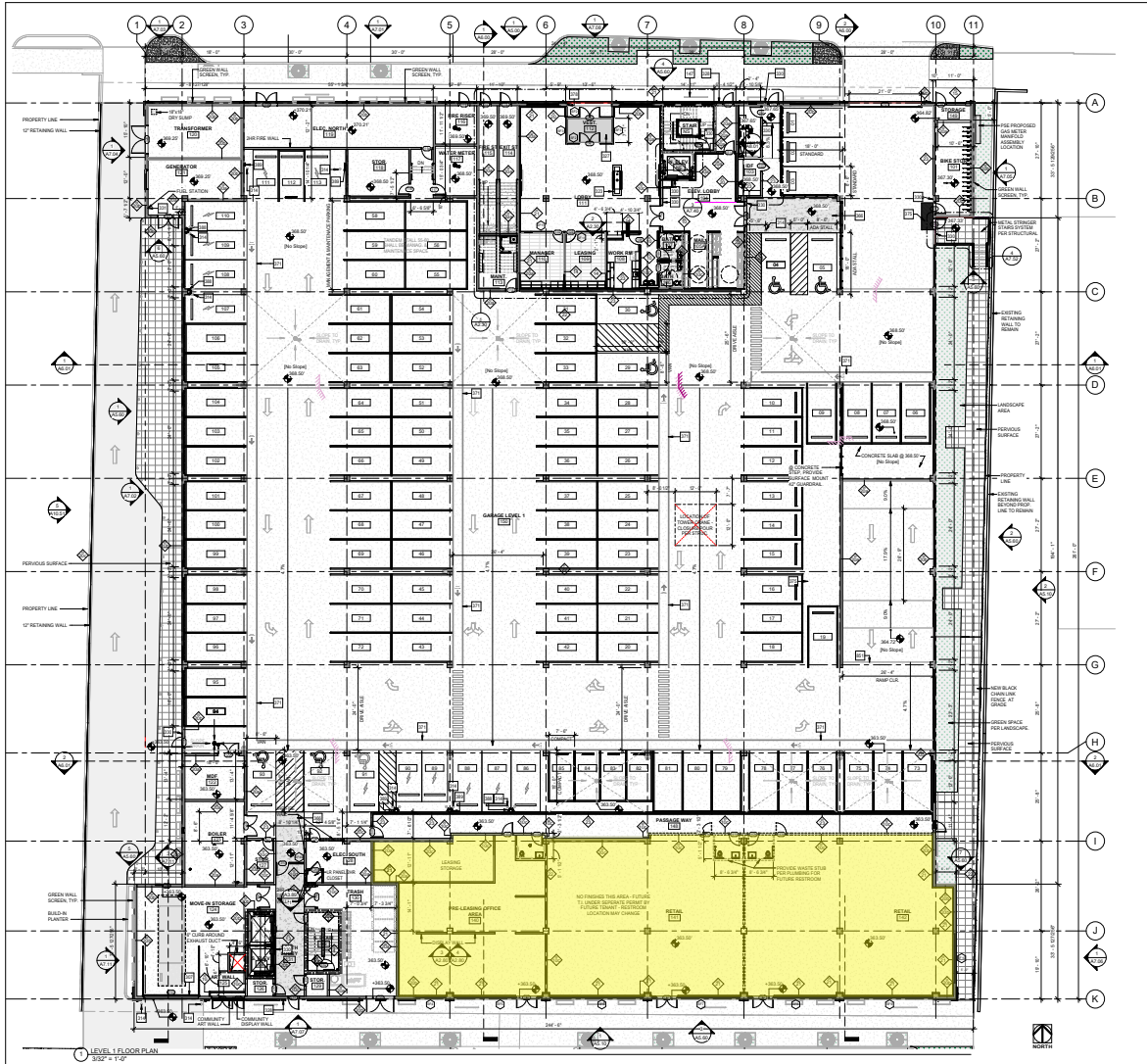
WCCR

West Coast Commercial Realty

Kinect @ Burien

631 SW 150th Street ♦ Burien, WA 98166

± 2,123 - 8,909 SF PRIME RETAIL FOR LEASE

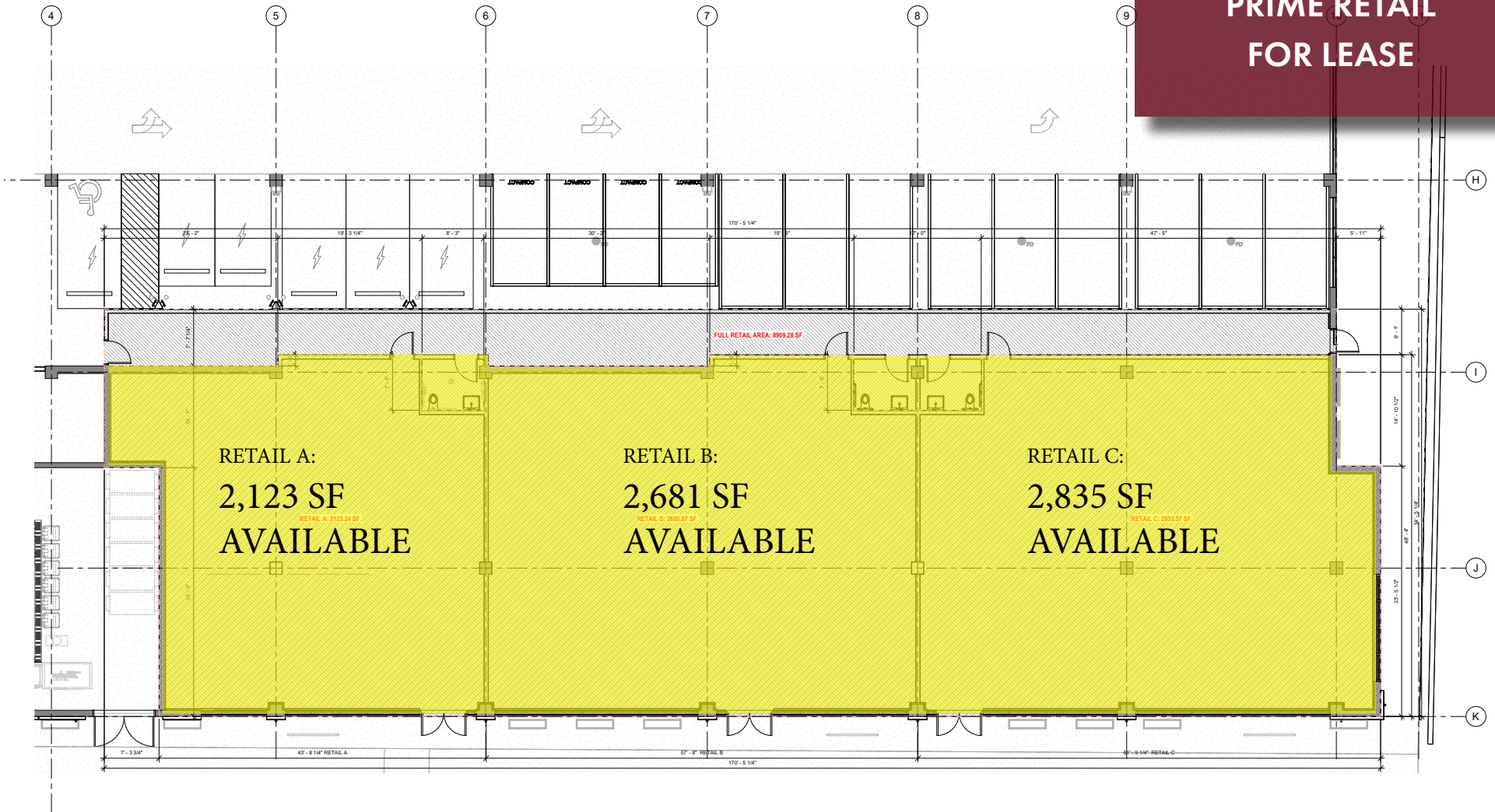


Kinect @ Burien

631 SW 150th Street • Burien, WA 98166

FLOOR PLAN

± 2,123 - 8,909 SF
PRIME RETAIL
FOR LEASE



Tiffini Connell | Jonathan Willett | Kara Farley

(206) 283-5212

www.wccommercialrealty.com

WCCR

West Coast Commercial Realty



DISCLAIMER: The above information has been secured from sources believed to be reliable, however, no representations are made to its accuracy. Prospective tenants or buyers should consult their professional advisors and conduct their own independent investigation. Site plan and configuration are subject to change. Properties are subject to change in price and/or availability without notice. West Coast Commercial Realty, LLC