

# Pageantry West

## CLASS A OFFICE SPACE FOR LEASE

8925 & 8945 West Russell Road, Las Vegas, NV 89148



AVISON YOUNG  
10845 Griffith Peak Drive, Suite 100  
Las Vegas, NV 89135  
O 702.472.7979 F 702.475.7545

**BARTON HYDE**  
D 702.475.7546  
barton.hyde@avisonyoung.com  
NV RE License # S.0041080

**ZOE SHIPMAN**  
D 702.475.7548  
zoe.shipman@avisonyoung.com  
NV RE License# S.0201719



*The information contained herein was obtained from sources deemed reliable; however, Avison Young makes no guarantees or representations as to the accuracy thereof. The presentation of this property is submitted subject to errors, changes of price or conditions prior to sale or lease, or withdrawal of notice.*



**Pageantry West** consists of two Class A office buildings located at 215 & Russell. Its central location between Summerlin and Green Valley, excellent visibility from the 215 and quick freeway access make this an ideal and in-demand office park in a thriving area.

### Property highlights

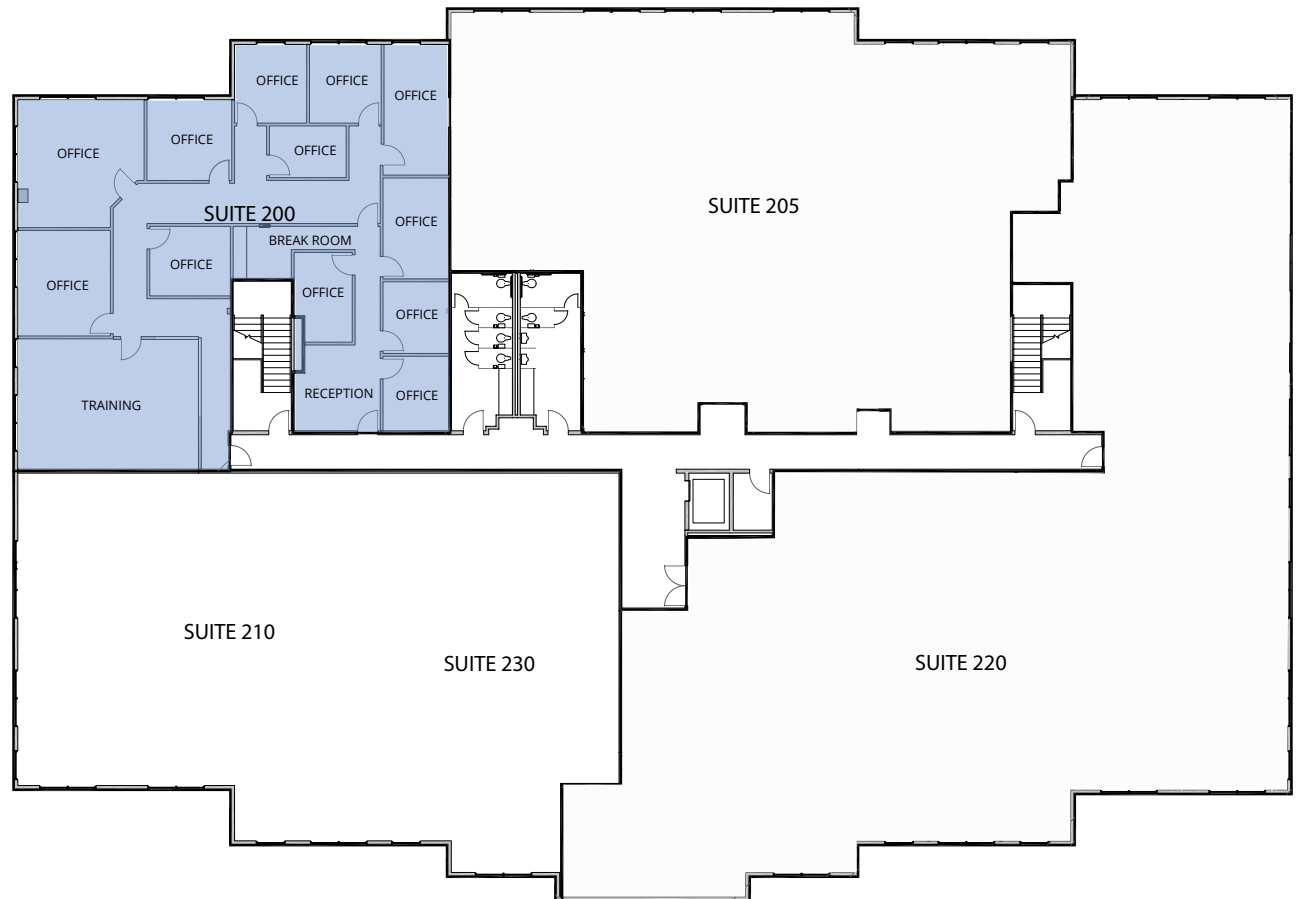
- ▶ 105,853 sf Class A office park in booming Southwest Las Vegas
- ▶ Three-story building (63,433 sf) and two-story building (42,420 sf) with grand entries
- ▶ Prominent visibility and clear signage from 215 Beltway
- ▶ 10 minute drive to new Raiders Stadium & Harry Reid International Airport
- ▶ Desirable midway location between Summerlin and Green Valley

**Lease rate: \$2.60/sf MG**

# For Lease

Pageantry West  
8925 & 8945 West Russell Road  
Las Vegas, NV 89148

8925  
Second floor



 Available

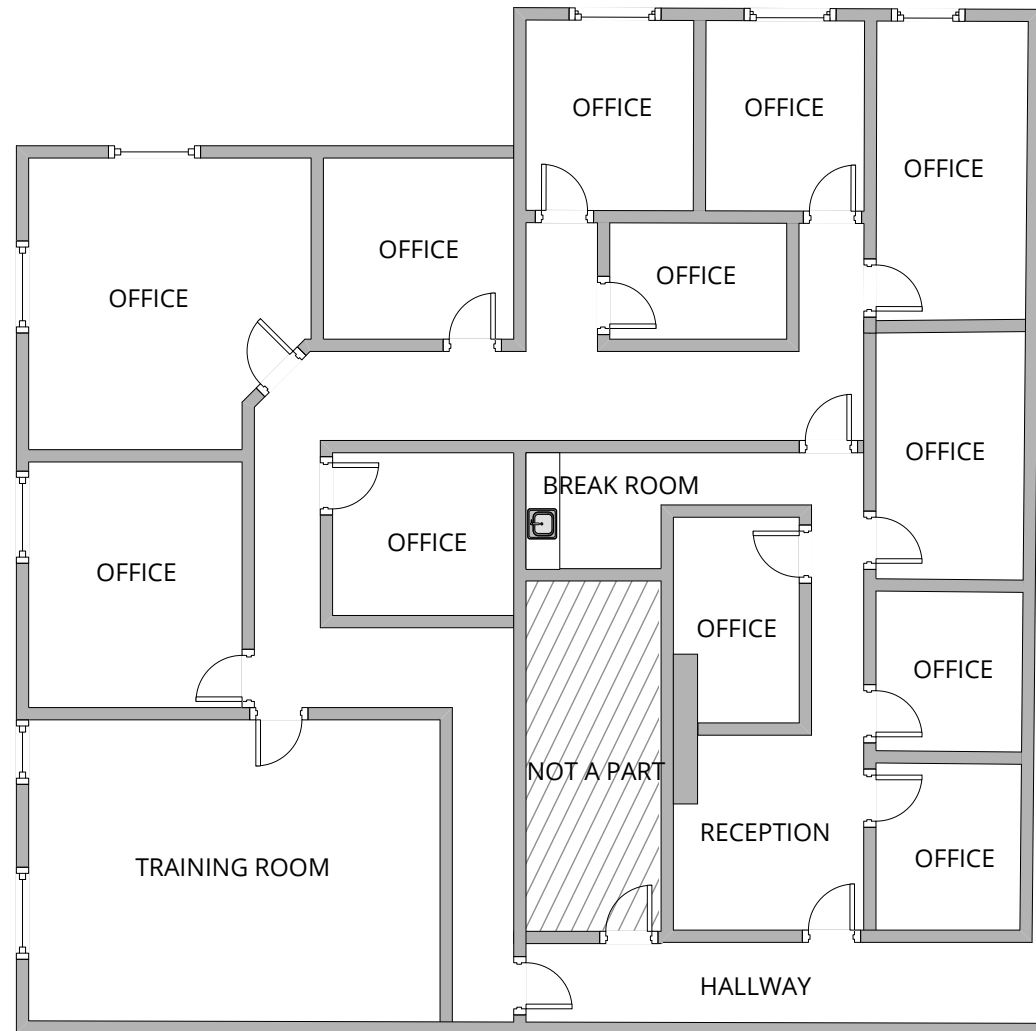
# For Lease

Pageantry West  
8925 & 8945 West Russell Road  
Las Vegas, NV 89148

8925 // SUITE 200

3,923 rsf / 3,374 usf

Lease rate: \$2.60/sf MG



# For Lease

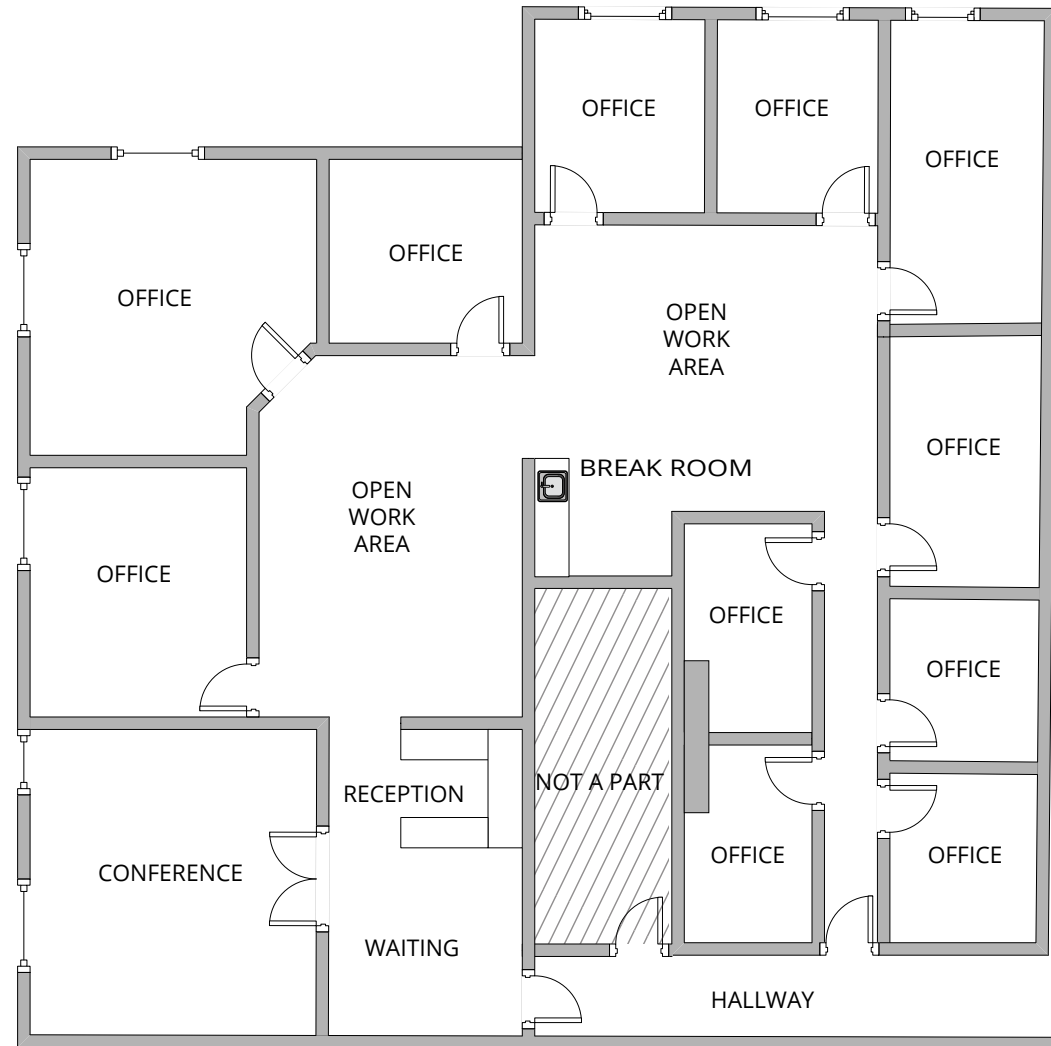
Pageantry West  
8925 & 8945 West Russell Road  
Las Vegas, NV 89148

## OPTION 2

8925 // SUITE 200

3,923 rsf / 3,374 usf

Lease rate: \$2.60/sf MG



Spec plan can be completed approximately 90 days from lease execution.

# For Lease

Pageantry West  
8925 & 8945 West Russell Road  
Las Vegas, NV 89148

## OPTION 3

### 8925 // SUITE 200A

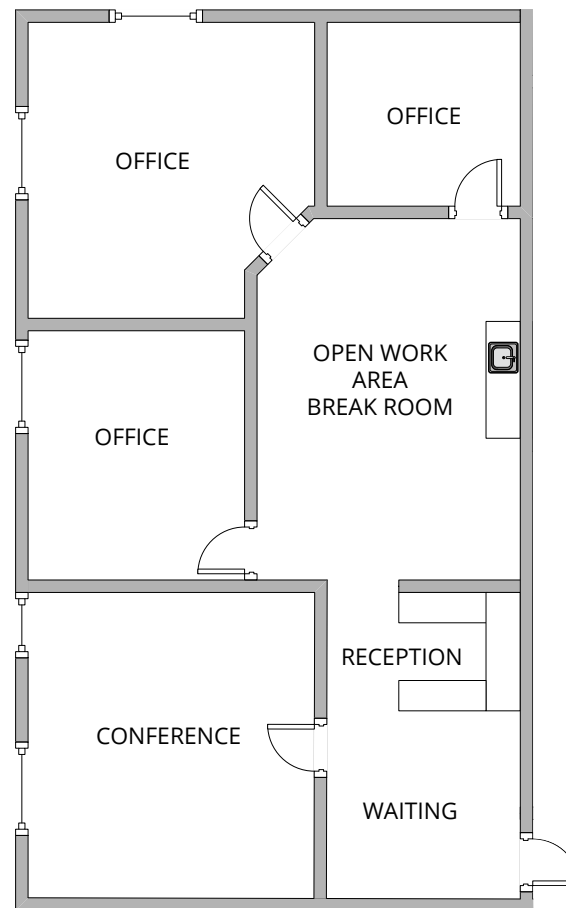
1,972 rsf / 1,730 usf  
Lease rate: \$2.60/sf MG

### 8925 // SUITE 200B

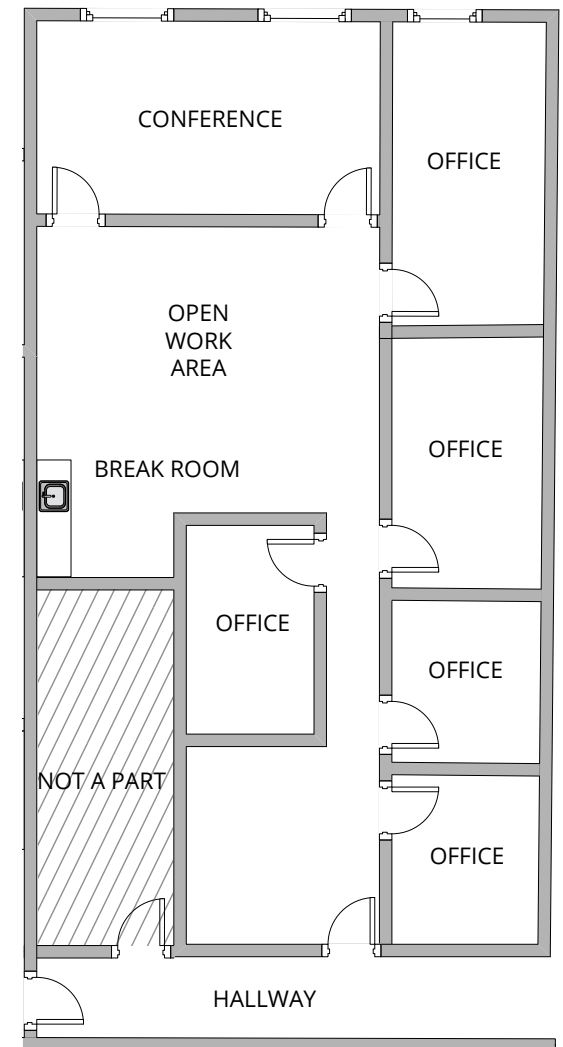
1,874 rsf / 1,644 usf  
Lease rate: \$2.60/sf MG



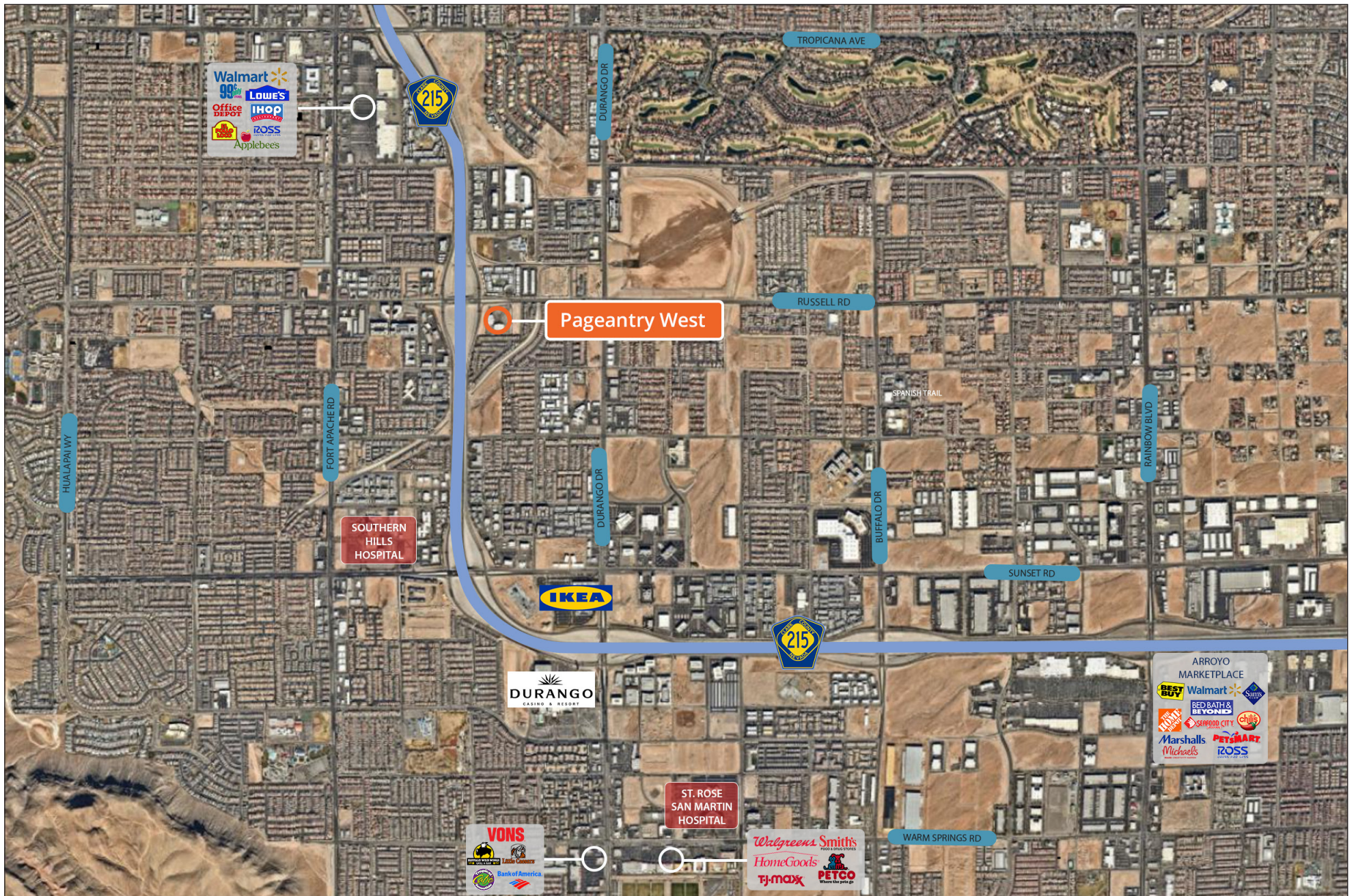
### SUITE 200B



### SUITE 200A



Spec plans can be completed approximately 120 days from lease execution.



**AVISON YOUNG**  
 10845 Griffith Peak Drive, Suite 100  
 Las Vegas, NV 89135  
 O 702.472.7979 F 702.475.7545

**BARTON HYDE**  
 D 702.475.7546  
 barton.hyde@avisonyoung.com  
 NV RE License # S.0041080

**ZOE SHIPMAN**  
 D 702.475.7548  
 zoe.shipman@avisonyoung.com  
 NV RE License# S.0201719