



15941 US Highway 19 | Hudson, FL 34667

Free-Standing Building

FOR SALE

Marc Pfleger
Commercial Associate
Cell: (727) 262-5998
mpfleger@cap-realty.com



**COMMERCIAL ASSET
PARTNERS**

OFFERING

Property Specifications

ADDRESS	15941 US 19 Hudson, FL 34667
COUNTY/MARKET	Pasco / Tampa Bay Area
PARCEL ID#	23-24-16-0000-00200-0041
AVAILABLE SPACE	12,000 SF
USE	Warehouse Showroom
ZONING	C2
YEAR BUILT	1985
ELECTRIC	Withlacoochee Electric Cooperative
WATER	Hudson Water Works
PRICE	\$1,495,000.00



Demographics | 10 Miles



230,503
Population



\$65,143

Average HH Income



3.8%
Population Growth



48.8

Average Age

EXECUTIVE SUMMARY

Commercial Asset Partners Realty, is pleased to exclusively offer this versatile West Pasco Free-Standing building. The layout and C2 zoning of the property offers flexibility in design accommodating a wide range of businesses and allowing you to tailor the space to your unique requirements.

Thrive by being positioned in close proximity to major retailers. The property comes with prominent monument signage, providing a visible presence on the bustling US-19, making it easy for customers to locate your business.

Pasco County population growth is over 30% in the past decade with 3.8% growth in the last year. Hudson is poised for significant transformation with many upcoming approved commercial and residential projects.

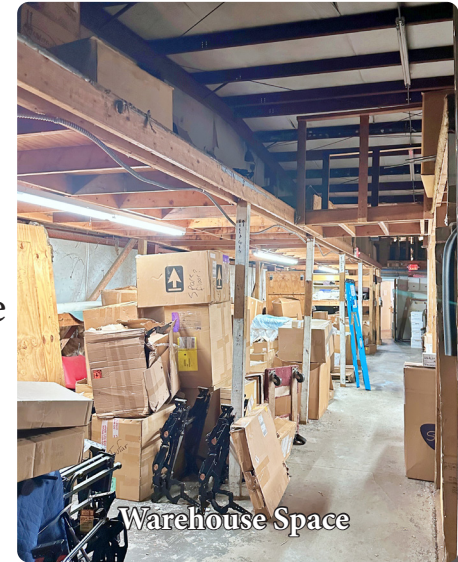
Ask agent for more details



Showroom Space



10' x 12' Overhead Door

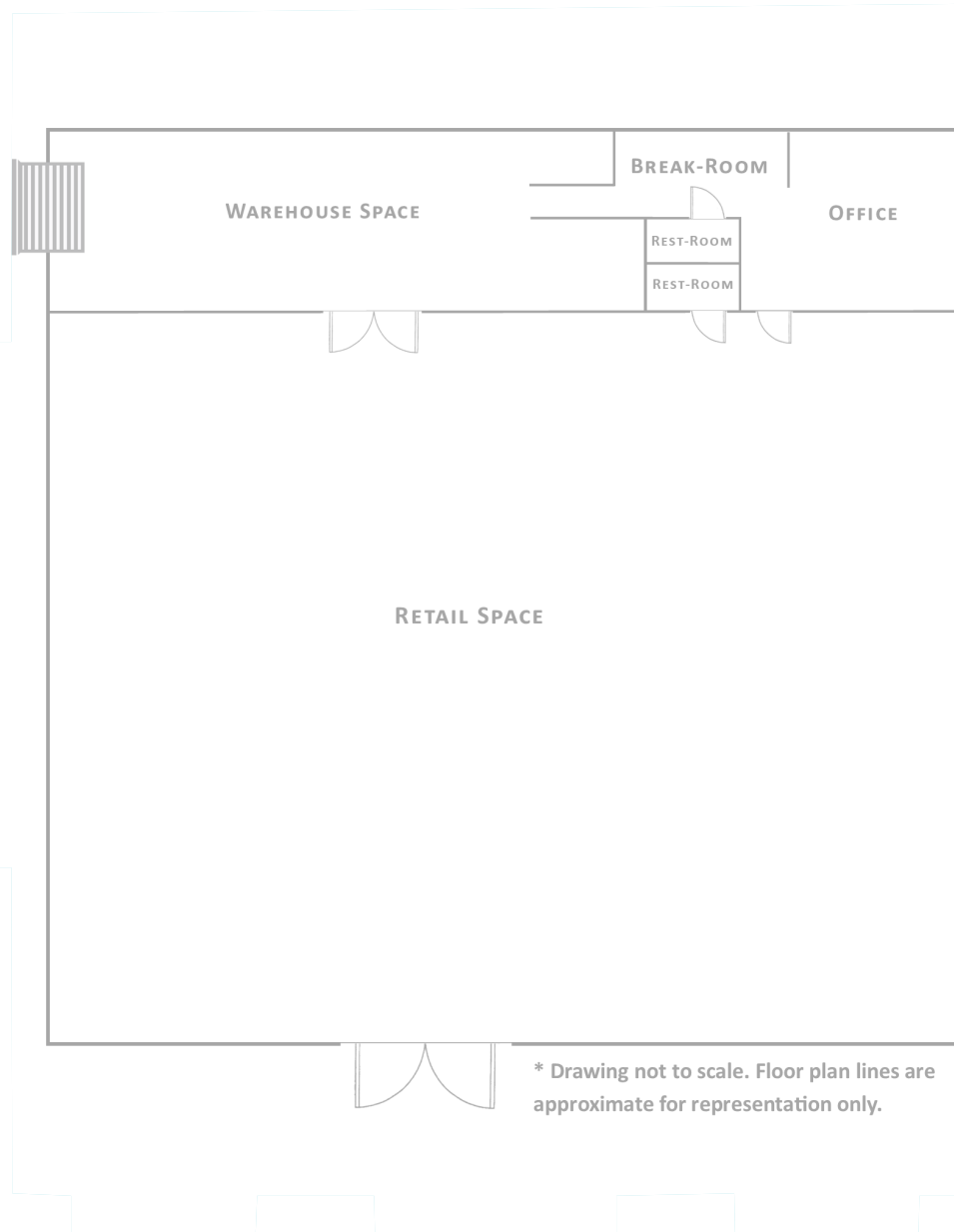


Warehouse Space



18' Clear Height

LOCATION SUMMARY

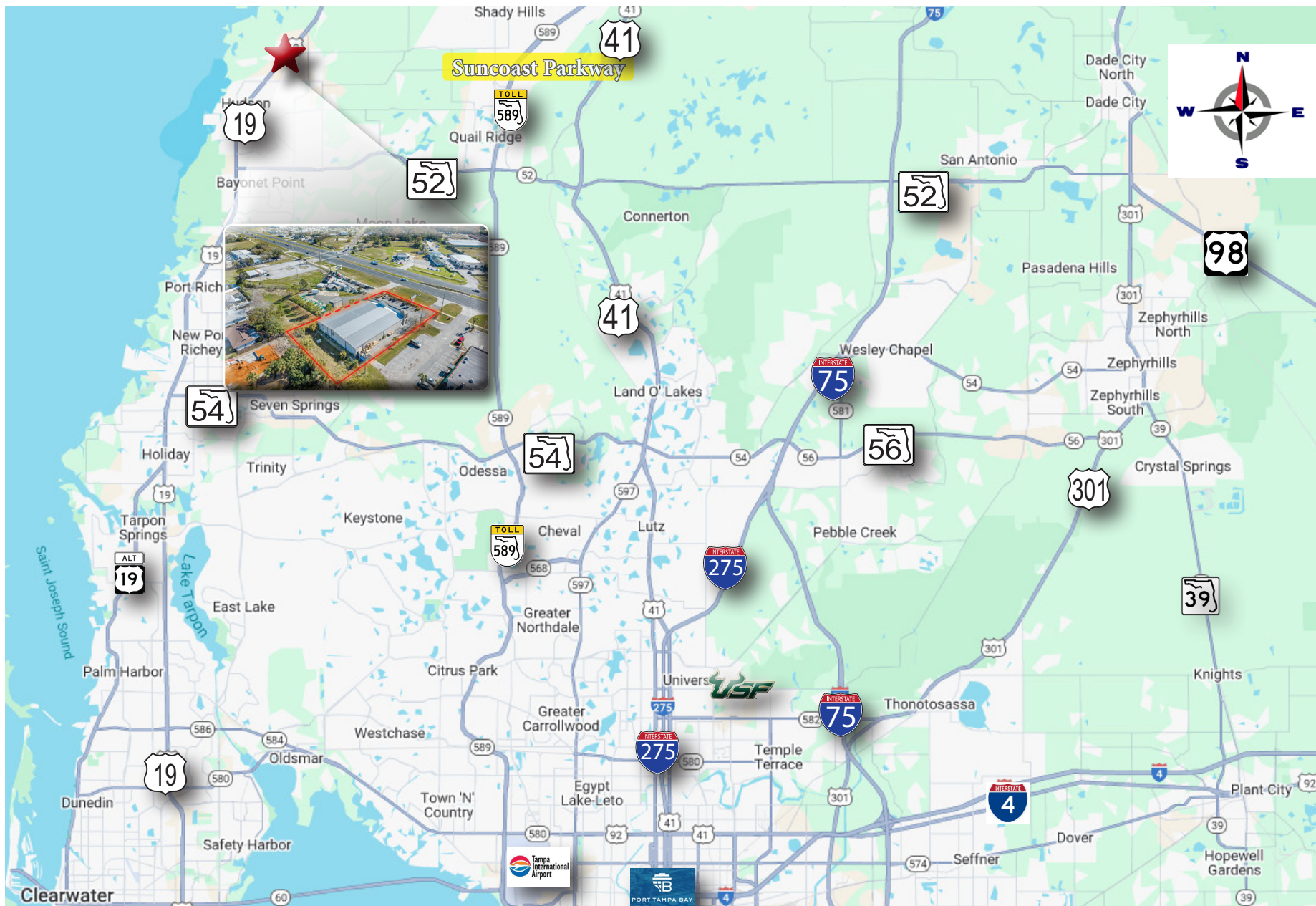


* Drawing not to scale. Floor plan lines are approximate for representation only.



The subject property is located on US Hwy 19, directly south of Little Rd. The site is part of Pasco County, the northern part of the Tampa Bay Region which has been recognized as one of the fastest growing areas in the Country.

- 40 miles to Tampa International Airport
- 18 miles to the West of the Suncoast Parkway
- 37 miles to the University of South Florida
- 47 miles to the Port of Tampa



Marc Pfleger
 Commercial Associate
 Cell (727) 262 - 5998
mpfleger@cap-realty.com

Visit us @ www.cap-realty.com
 LinkedIn | Facebook | Instagram
 Follow CAPRealty @ [/commercialassetpartnersrealty/](https://www.instagram.com/commercialassetpartnersrealty/)



**COMMERCIAL ASSET
 PARTNERS**