

FOR SALE

**RE/MAX**  
COMMERCIAL®

## BUILDING FEATURES

- ±2,030 sf Stand Alone Warehouse
- Live / Work On Site SFR
- Ideal for Manufacturing
- Access to major transportation routes
- Possible conversion of home into Office
- 1 Restroom
- Clean well kept Space
- Mixed Use Zoning
- 1 Grade Level Door

THIS INFORMATION HAS BEEN SECURED FROM SOURCES WE BELIEVE TO BE RELIABLE, BUT WE MAKE NO REPRESENTATIONS OR GUARANTEES, EXPRESSED OR IMPLIED, AS TO THE ACCURACY OF THE INFORMATION. REFERENCES TO SQUARE FOOTAGE OR AGE ARE APPROXIMATE. BUYER MUST VERIFY THE INFORMATION AND BEARS ALL RISK FOR ANY INACCURACIES.

**10825 SILICON AVE,  
MONTCLAIR, CA 91763**

### CONTACT:

Hector Lopez  
213-700-8831  
DRE #01862220  
hectorlopez@remax.net

Mauricio Sanchez  
562-805-7549  
DRE #01716728  
msanchez@remax.net



# PROPERTY DETAILS

- 10825 SILICON AVE MONTCLAIR, CA 91763
- Warehouse SFR ± 2,030 SF
- SFR Bldg: ± 872 SF
- Lot: ± 7052/ ± 0.16 Acre
- Zoning: Commercial Mixed Use
- APN: 1012-183-06-0000
- County: San Bernardino

## Possible Allowable Uses\*:

- Auto Repair, Plumbing Supplies, Contractor Storage
- Manufacturing, Machine Shop, Auto tool sales
- Check with the City for further uses.



THIS INFORMATION HAS BEEN SECURED FROM SOURCES WE BELIEVE TO BE RELIABLE, BUT WE MAKE NO REPRESENTATIONS OR GUARANTEES, EXPRESSED OR IMPLIED, AS TO THE ACCURACY OF THE INFORMATION. REFERENCES TO SQUARE FOOTAGE OR AGE ARE APPROXIMATE. BUYER MUST VERIFY THE INFORMATION AND BEARS ALL RISK FOR ANY INACCURACIES.

## CONTACT:

Hector Lopez  
213-700-8831  
DRE #01862220  
hectorlopez@remax.net

Mauricio Sanchez  
562-805-7549  
DRE #01716728  
msanchez@remax.net

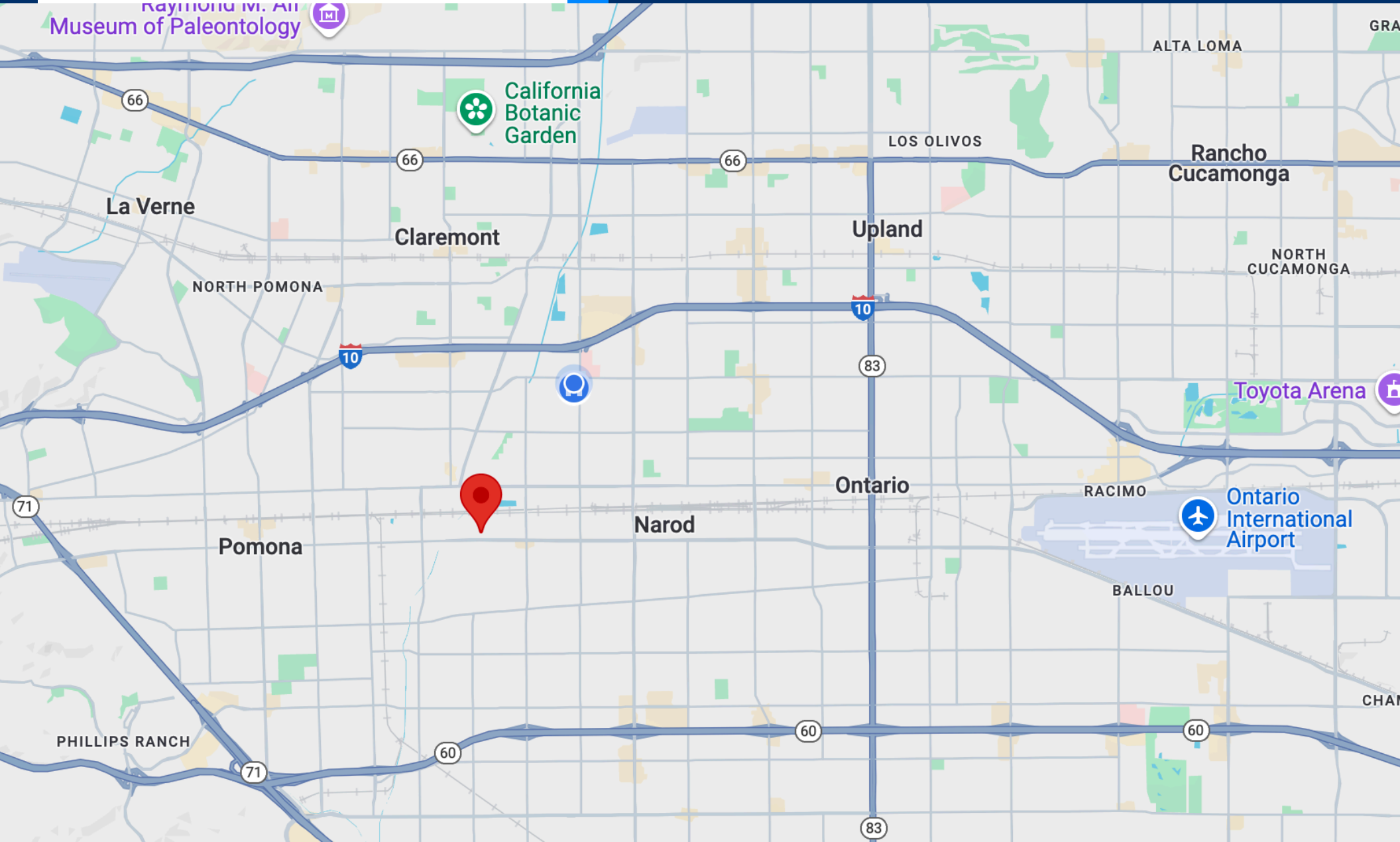
REMAX MASTERS 14760 PIPELINE AVE, CHINO HILLS, CA 91709

**RE/MAX**  
COMMERCIAL



**MAPS**

Raymond M. All  
Museum of Paleontology

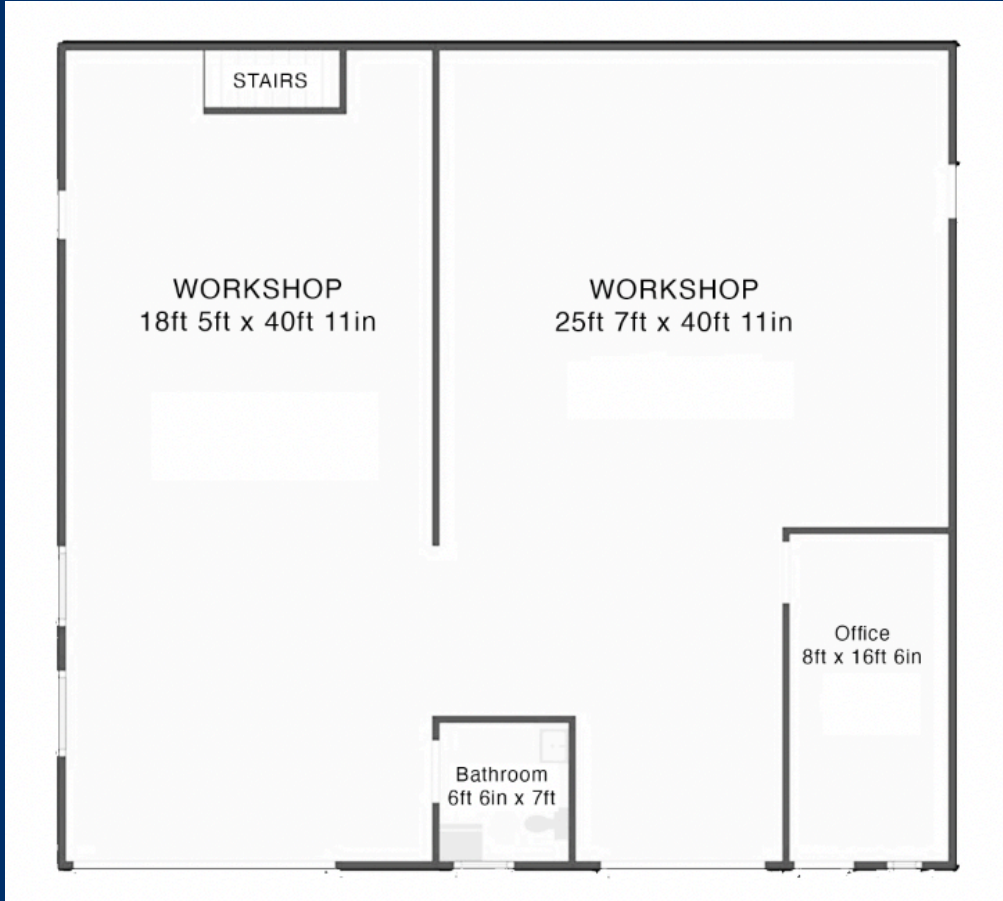


**CONTACT:**

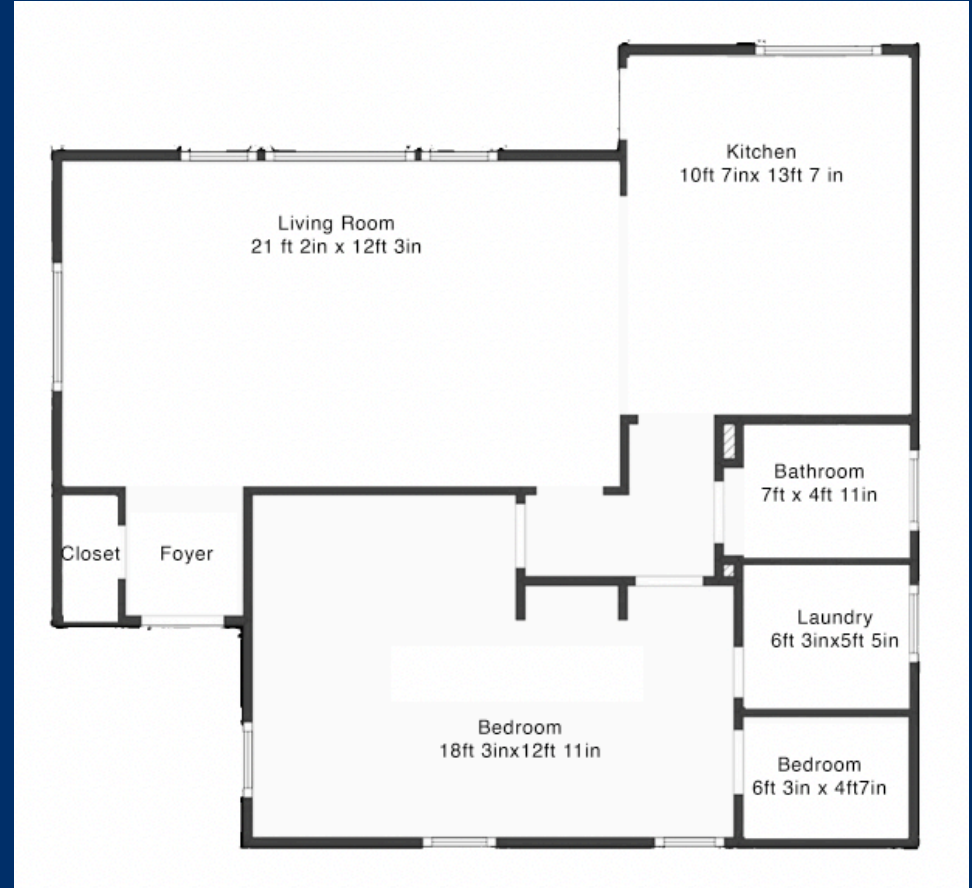
Hector Lopez  
213-700-8831  
DRE #01862220  
hectorlopez@remax.net

Mauricio Sanchez  
562-805-7549  
DRE #01716728  
msanchez@remax.net

## FLOOR PLAN: WAREHOUSE



## FLOOR PLAN: SFR



## CONTACT:

Hector Lopez  
213-700-8831  
DRE #01862220  
hectorlopez@remax.net

Mauricio Sanchez  
562-805-7549  
DRE #01716728  
msanchez@remax.net





DEMOGRAPHICS

# MONTCLAIR, CA

CENSUS PLACE

ADD COMPARISON

2022 POPULATION

37,842

0.0766% 1-YEAR DECLINE

US SENATOR



Alex Padilla

DEMOCRATIC PARTY

US SENATOR



Laphonza Butler

DEMOCRATIC PARTY

2022 MEDIAN AGE

32.9

1.23% 1-YEAR INCREASE

2022 POVERTY RATE

14.9%

16% 1-YEAR DECREASE

2022 MEDIAN HOUSEHOLD INCOME

\$72,789

7.86% 1-YEAR GROWTH

2022 MEDIAN PROPERTY VALUE

\$485,100

14.6% 1-YEAR GROWTH

## Median Earnings by Industry

\$39,995

MEDIAN EARNING MEN ± \$3,711

The industries with the best median earnings for men in 2022 are Public Administration (\$65,714), Manufacturing (\$50,263), and Wholesale Trade (\$50,185).

The industries with the best median earnings for women in 2022 are Construction (\$90,509), Public Administration (\$59,309), and Finance & Insurance, & Real Estate & Rental & Leasing (\$50,818).

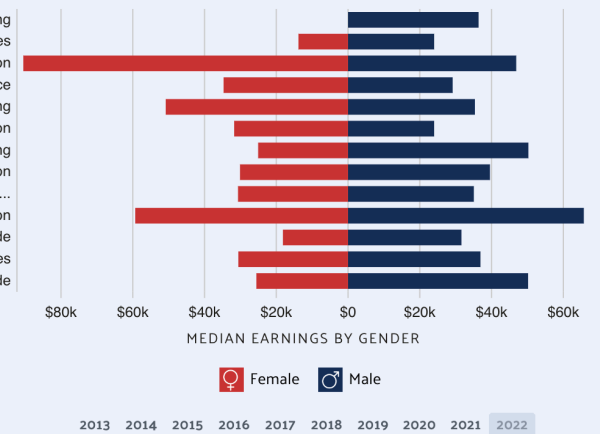
Data from [the Census Bureau ACS 5-year Estimate](#).

\$30,593

MEDIAN EARNING WOMEN ± \$3,554

- Agriculture, Forestry, Fishing & Hunting, & Mining
- Arts, Entertainment, & Recreation, & Accommodations & Food Services
- Construction
- Educational Services, & Health Care & Social Assistance
- Finance & Insurance, & Real Estate & Rental & Leasing
- Information
- Manufacturing
- Other Services Except Public Administration
- Professional, Scientific, & Management, & Administrative & Waste...
- Public Administration
- Retail Trade
- Transportation & Warehousing, & Utilities
- Wholesale Trade

View Data Save Image Share / Embed Add Data to Cart



## CONTACT:

Hector Lopez  
213-700-8831  
DRE #01862220  
hectorlopez@remax.net

Mauricio Sanchez  
562-805-7549  
DRE #01716728  
msanchez@remax.net



REMAX MASTERS 14760 PIPELINE AVE, CHINO HILLS, CA 91709