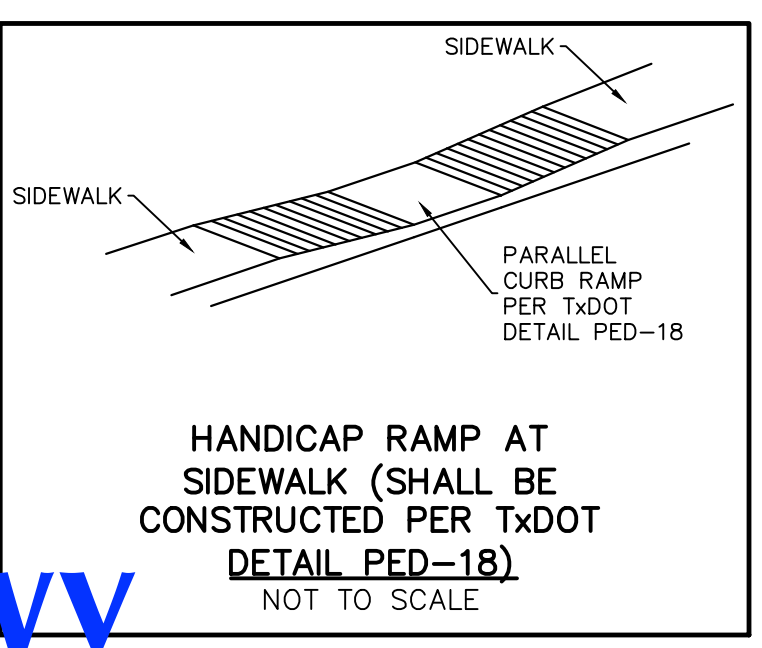
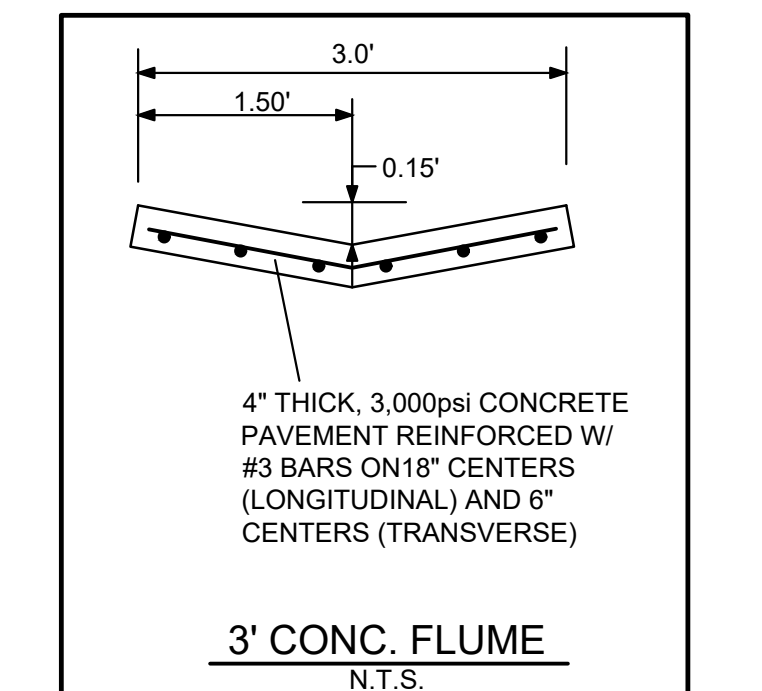
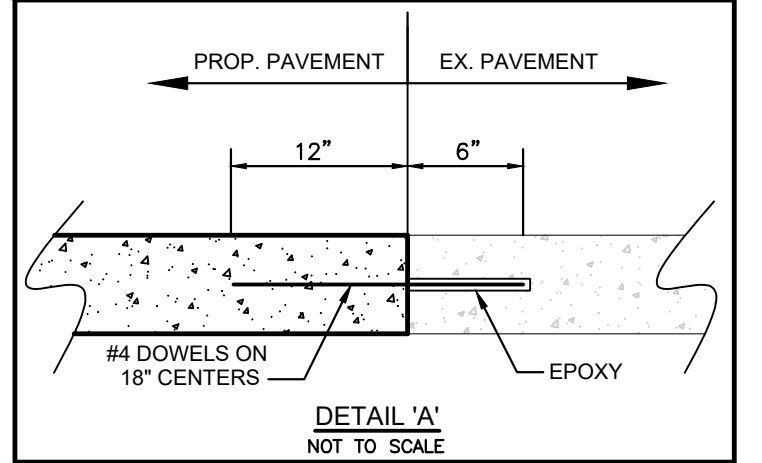


380



- ENGINEER'S NOTES TO CONTRACTOR
1. BY COMMENCING CONSTRUCTION CONTRACTOR AFFIRMS THEY HAVE REVIEWED AND UNDERSTAND THE PLANS AND SPECIFICATIONS. ANY QUESTIONS AND DISCREPANCIES MUST BE ADDRESSED PRIOR TO COMMENCING CONSTRUCTION.
 2. ALL CONSTRUCTION SPECIFICATIONS WITHIN CITY ROW AND EASEMENTS SHOULD COMPLY WITH CITY OF PRINCETON STANDARDS. PRIOR APPROVAL TO USE ANY NON-STANDARD MATERIAL IS REQUIRED.
 3. CONTRACTOR MUST VERIFY THE LOCATION OF ALL EXISTING UTILITIES PRIOR TO THE START OF CONSTRUCTION.
 4. CONTRACTOR MUST ENSURE THAT ALL AREAS ARE GRADED TO DRAIN.
 5. CONTRACTOR MUST NOTIFY ENGINEER OF ANY DISCREPANCIES BETWEEN THESE PLANS & ONSITE CONDITIONS.

CAUTION!
CONTRACTOR SHALL LOCATE ALL EXISTING UTILITIES PRIOR TO BEGINNING CONSTRUCTION. UTILITIES SHOWN ARE BASED ON BEST AVAILABLE RECORDS AND SHOULD NOT BE CONSIDERED EXACT.

ADA COMPLIANCE: The ADA routes from buildings to sidewalks within public rights-of-way are designed to meet ADA requirements. Contractor shall ensure all grades along the ADA-required routes meet said requirements. The length of the barrier-free ramps (BFR) will need to be adjusted to meet grade requirements. In general, maximum grades are as follows:

Max. Longitudinal Grade Along ADA Routes:	5%
Max. Longitudinal Grade on BFR:	12:1
Max. Cross Slope Along Route:	2%
Max. Grade in HC Spaces (All Directions):	2%
Minimum Width of ADA Travelway:	36 in.

NOTE:
THE ONLY PROVIDERS OF TRUNCATED DOMES FOR THE BARRIER FREE RAMP'S ARE ACCESS TILE, ARMOR-TILE OR SUREWERX AND THE ONLY ACCEPTED COLOR IS COLONIAL RED.

LEGEND	
HC	HANDICAP PARKING SPACE
HP	HIGH POINT
C	COMPACT PARKING SPACE
15	NUMBER OF PARKING SPACES IN ROW
→	PROPOSED 6" CURB
→	DIRECTION OF FLOW
1	CONSTRUCTION NOTE
→	CONCRETE INVERT
■	DEMOLISH EX. CONCRETE

Cypress Bend Pkwy

BENCHMARKS
 BM #1: "X" CUT IN CONCRETE FOUND ON THE BACK OF CURB ON THE NORTH END OF CENTER MEDIAN OF CYPRESS BEND PARKWAY, AT THE INTERSECTION WITH U.S. HIGHWAY 380. ELEV=596.97
 BM #2: MON 1133 "X" CUT IN CONCRETE FOUND NEAR THE NORTHEAST CORNER OF A CONCRETE STREET, INTERSECTION OF BOORMAN LANE (COUNTY ROAD NO. 457) WITH U.S. HIGHWAY 380. ELEV=584.13

SITE PLAN
 200 CYPRESS BEND PARKWAY
 PRINCETON OFFICE CONDOS
 CITY OF PRINCETON, TEXAS COUNTY, TEXAS

MACATEE
 CIVIL ENGINEERING
 DESIGN & CONSULTING
 (Tex. Reg. No. F-456)
 12655 N. CENTRAL EXPWY, SUITE 420
 DALLAS, TEXAS 75243
 TEL 214-373-1180 * FAX 214-373-6580
 daytonm@macatee-engineering.com
 phillipf@macatee-engineering.com

DESIGNED	CHECKED	DATE	DWG FILE	PROJECT #
PV	DCM	05/06/2021	03_site plan	JJ_PRINCE