

## NOW LEASING

### THE NO-JEFF BUILDING

115 S Jefferson, Spokane, WA 99201

#### NEIGHBORHOOD

Situated in the energetic west end of Downtown Spokane, 111 N Jefferson is surrounded by the city's brewery district, hip coffee shops, and unique local shopping. This walkable, creative neighborhood draws steady foot traffic and offers quick access to Riverfront Park and major downtown routes.

This is a rare opportunity to build your dream space in a building undergoing a full overhaul—position your business in one of Spokane's most up-and-coming urban districts.

#### AMENITIES

- ✓ 16' Ceilings, Exposed Brick and Timbers
- ✓ Fitness Club
- ✓ Construction to Begin Winter 2026, Occupancy Fall 2026

Information is deemed reliable but not guaranteed. Broker not responsible for changes errors or commissions. All square footages are for conveniences only. All information should be verified prior to leasing or purchasing property.

### RENTAL RATES

\$16/RSF  
NNN (no property tax)

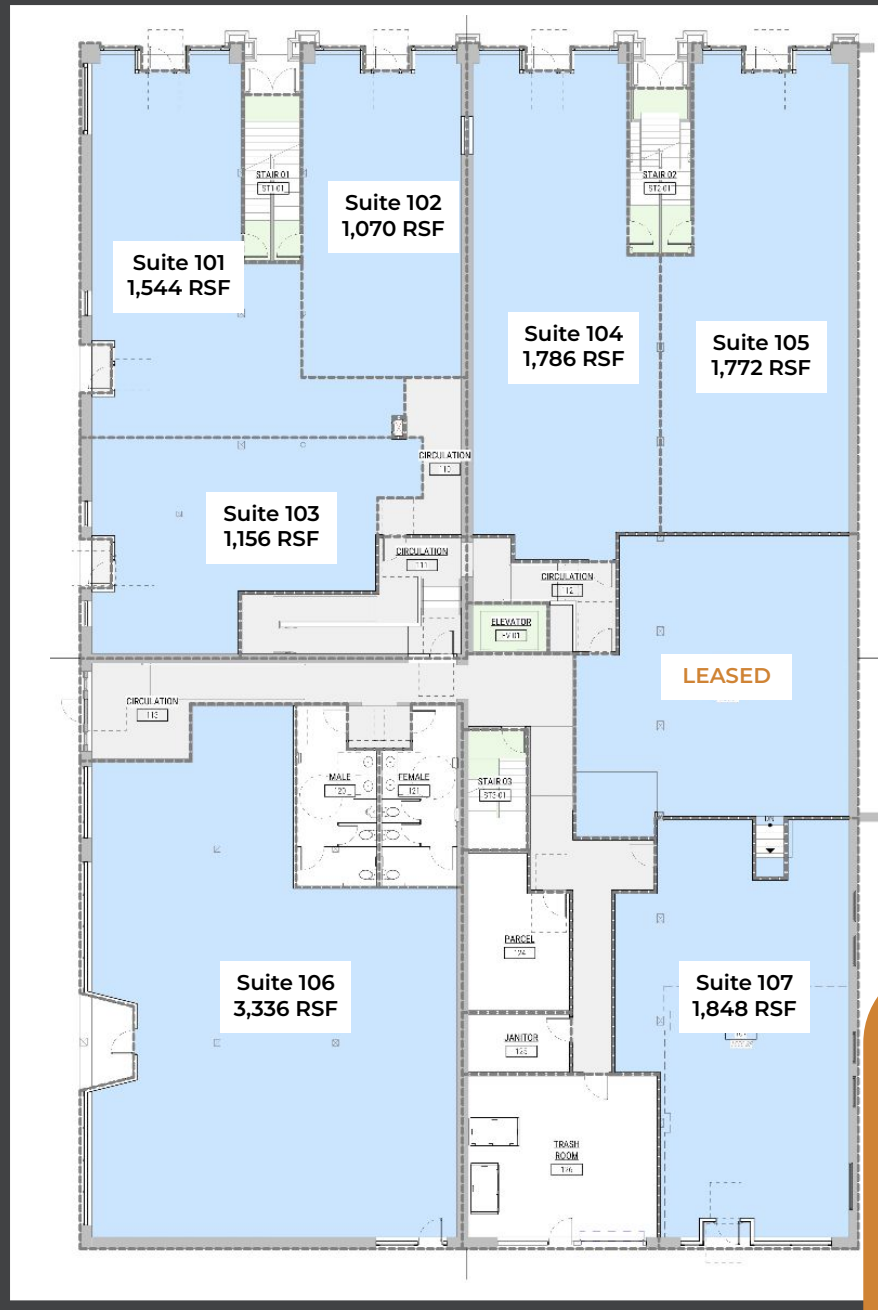
### SPACES AVAILABLE

1,070 -3,770 RSF  
TI Allowance Available



POTENTIAL CONCEPT

# FLOOR PLAN



**FOR LEASE**

**1,070-3,770 RSF**

**\$16/MO NNN**

TI Allowance up to \$60/SF

Information is deemed reliable but not guaranteed. Broker not responsible for changes errors or commissions. All square footages are for conveniences only. All information should be verified prior to leasing or purchasing property.