

# FOR LEASE

LOWE'S PLAZA | 3160 W RIDGE RD, ROCHESTER, NY 14626



**MULTIPLE SPACES**  
SF AVAILABLE



**30,502**  
VEHICLES PER DAY



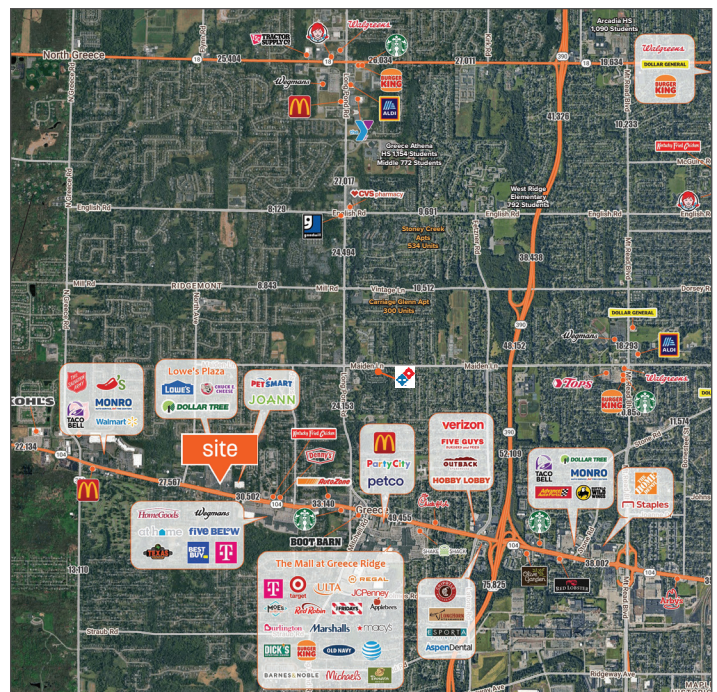
**\$12.00 NNN**  
LEASE PRICE

## OFFERING SUMMARY

Property Type	Retail/Salon
Space Available	Pad Site   8,000+SF   3,000+SF
Lease Type	NNN/Ground
Traffic Counts	W Ridge Rd: 30,502 / vpd
Parking	1,200+ Spaces
Lease Price	\$12.00 PSF

## PROPERTY HIGHLIGHTS

- 3,000 SF built-out hair salon & 8,000 SF vanilla box
- In close proximity to The Mall at Greece Ridge, Wegmans, Unity Hospital, Ridgemont Plaza, multiple dining and retail establishments & I-390
- Anchor Tenants include: Lowe's Home Improvement, Ollie's, Value City Furniture, Chuck E. Cheese, Dollar Tree, and Texas BBQ Joint
- Signage opportunities, including a pylon sign at a signalized intersection



DEMOGRAPHICS	1 Mile	3 Miles	5 Miles
Population	8,459	55,644	157,731
Median HH Income	\$76,972	\$78,233	\$70,120
Households	3,826	24,699	68,470
Employees	2,972	17,191	55,2

**FOR LEASE**

LOWE'S PLAZA | 3160 W RIDGE RD, ROCHESTER, NY 14626

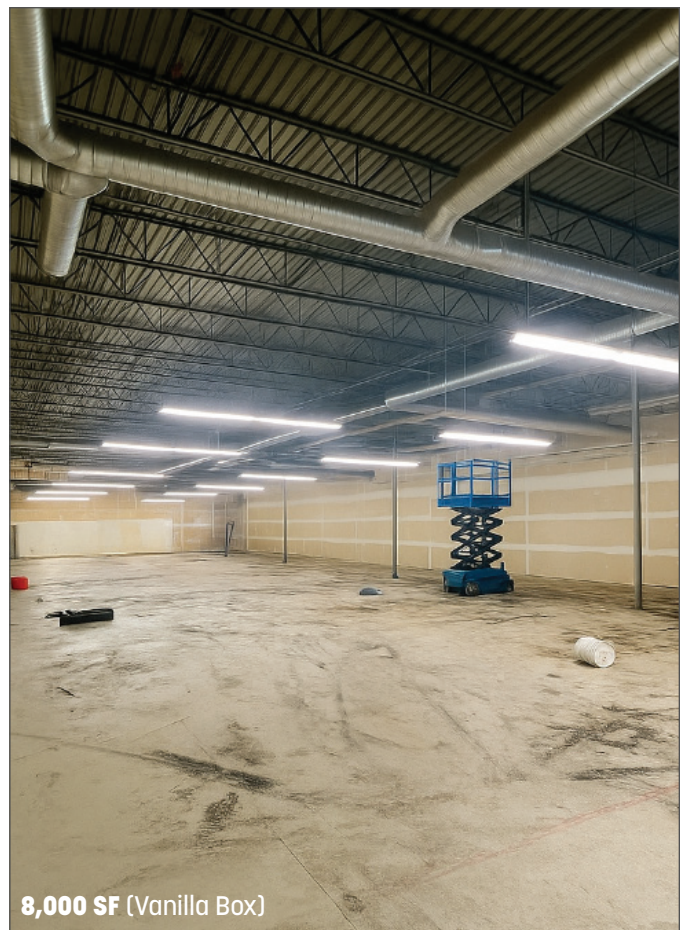
**Caliber**  
Commercial Brokerage



**3,000 SF (Previous Buildout)**



**3,000 SF (Previous Buildout)**



**8,000 SF (Vanilla Box)**

