

CURTIS BUSINESS PLAZA

MEDICAL OFFICE SPACE FOR LEASE | 1070 N CURTIS RD | BOISE, ID 83706



NICK SCHUITMAKER, CCIM

208.947.0802

nick@tokcommercial.com

PETER OLIVER, SIOR, CCIM

208.947.0816

peter@tokcommercial.com

MIKE GREENE, SIOR, CCIM

208.947.0835

mikeg@tokcommercial.com

Excellent location - one block from I-184 Connector and Curtis off-ramp.

Located directly across from St. Alphonsus Regional Medical Center.

Close to a variety of amenities, including public transportation.

Great medical office set up for a variety of service professionals.

Planned lobby and common area remodel.

Generous tenant improvement package.

New ownership + management.

Monument signage available.

SPACE

SIZE

RATE

Suite 210	1,935 SF	\$17.75/SF, NNN
Suite 220	1,920 SF	\$17.75/SF, NNN
Suite 250	2,655 SF	\$17.75/SF, NNN
Suite 260	2,027 SF	\$17.75/SF, NNN
Suite 250+260	4,682 SF	\$17.75/SF, NNN

SUBMARKET

Central

BLDG TYPE

Office

BLDG SIZE

26,040 SF

OF FLOORS

2

PARKING

4:1000

ZONING

MX-1

LEASE TERM

3+ Years

LEASE TYPE

NNN

EST. NNN'S

\$7.25/SF
(includes utilities)

AVAILABLE

Immediately

CONTACT AGENTS FOR SHOWING INSTRUCTIONS

CONTACT

HIGHLIGHTS

DETAILS

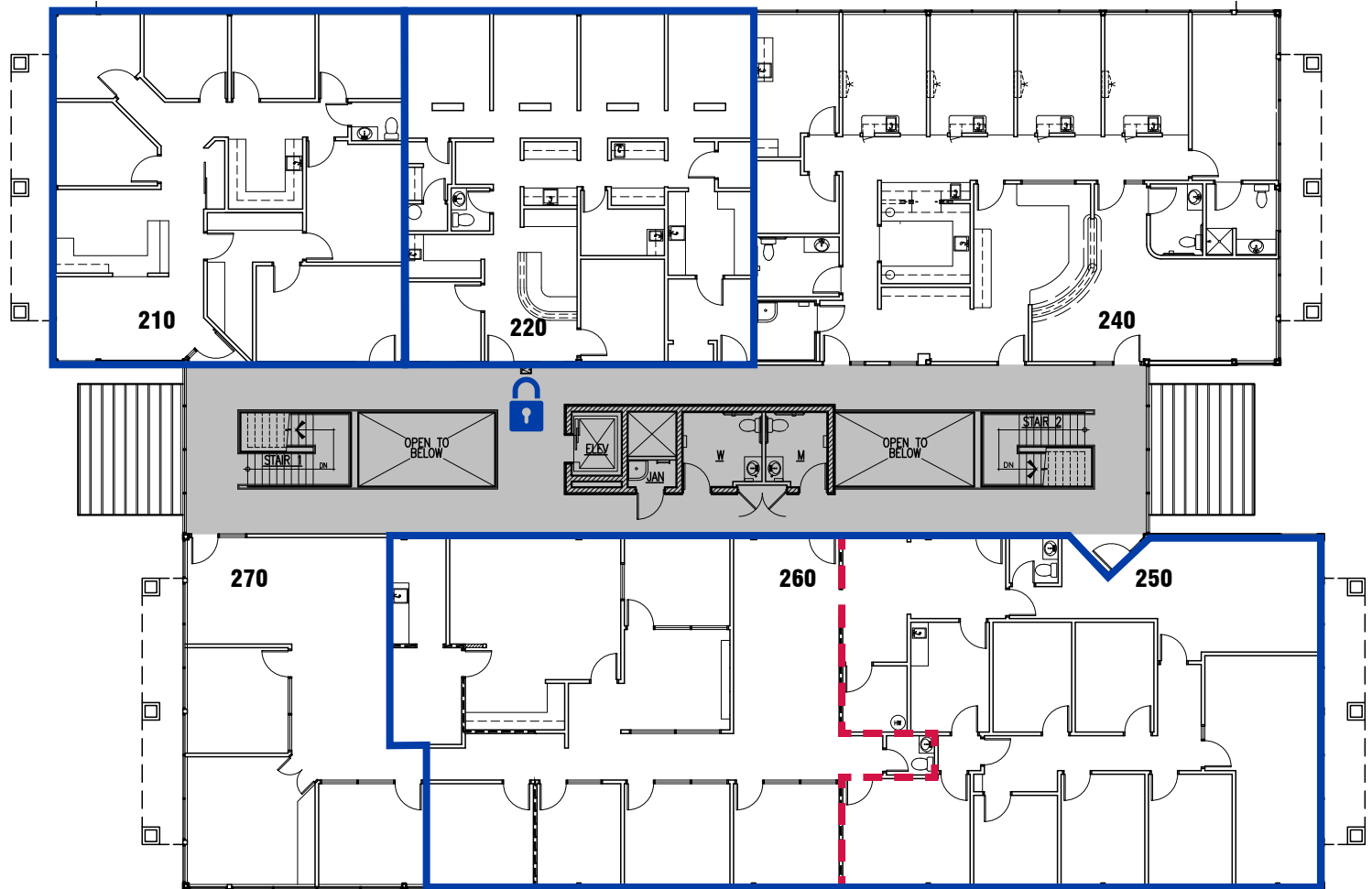
FLOOR PLAN

SECOND FLOOR

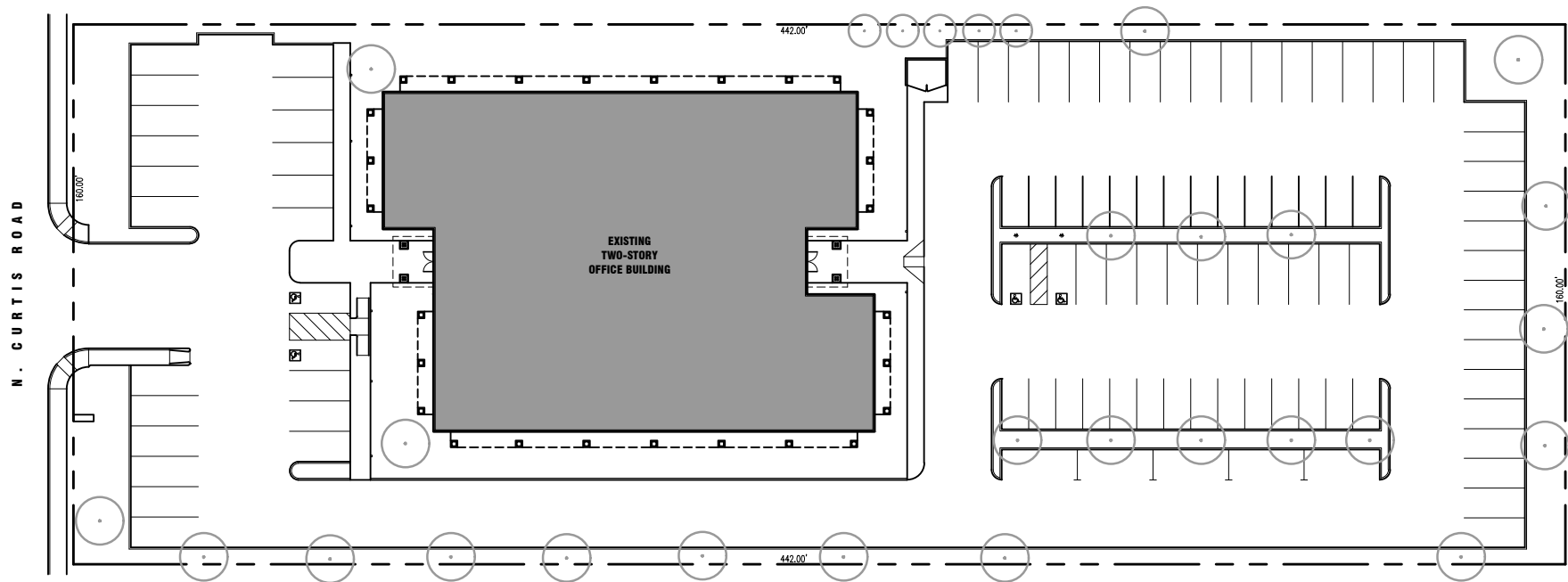
AVAILABLE

Suite 210	1,935 SF	\$17.75/SF, NNN
Suite 220	1,920 SF	\$17.75/SF, NNN
Suite 250	2,655 SF	\$17.75/SF, NNN
Suite 260	2,027 SF	\$17.75/SF, NNN
Suite 250+260	4,682 SF	\$17.75/SF, NNN

EST. NNN'S \$7.25/SF



SITE PLAN





AERIAL MAP

EASY ACCESS TO ALL SERVICES

