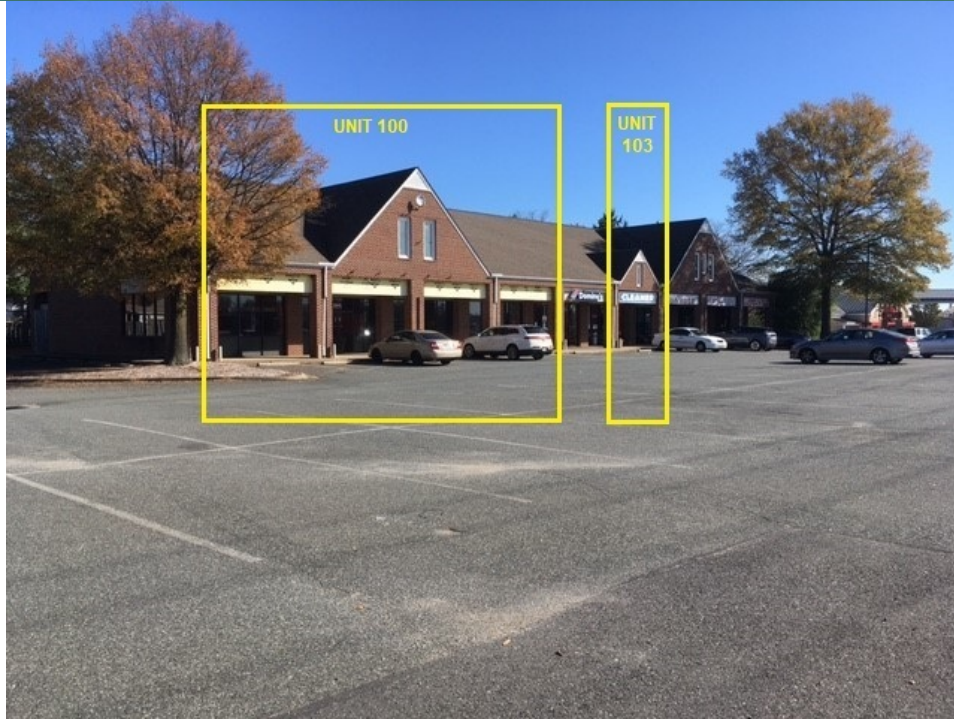


**FOR LEASE**

# GREEN TREE PLAZA SHOPPING CENTER

840 WARRENTON RD. FREDERICKSBURG, VA 22406



**LEASE RATE     \$17.50 SF/YR**

## OFFERING SUMMARY

Lease Type:            NNN  
CAM/NNN Fees:       \$6.27/SF  
Available SF:           1,080 - 3,350 SF  
Building Size:           12,000 SF  
Zoning:                  B-2  
Market:                  Washington DC  
Submarket:             Stafford County  
Parcel ID:               44-101G

## PROPERTY OVERVIEW

Units available in retail strip center. Unit 100 is an end unit with 3,350 SF available. This unit will be delivered in shell condition with a rough-in bath. Unit 103 is a 1,080 SF interior unit with a bathroom.

## LOCATION OVERVIEW

Ideally located with frontage & visibility on the "going-home" side of Rt. 17/Warrenton Rd with 43,000 VPD! Less than half a mile from the intersection of Rt. 17 & Celebrate Virginia Pkwy. One mile from GEICO Corporate Office and 2 miles from University of Mary Washington Stafford Campus. Only 1.25 miles from I-95. This property is located in a qualified HUBZone!

### PRESENTED BY:

**GEORGE CHARLTON**  
**ASSOCIATE BROKER**  
703.330.1224  
george@weber-rector.com

Offering is subject to errors, omissions, prior sale, change in price, or withdrawal without notice.



COMMERCIAL REAL ESTATE SERVICES  
9401 Battle Street Manassas, VA 20110  
[www.Weber-Rector.com](http://www.Weber-Rector.com)

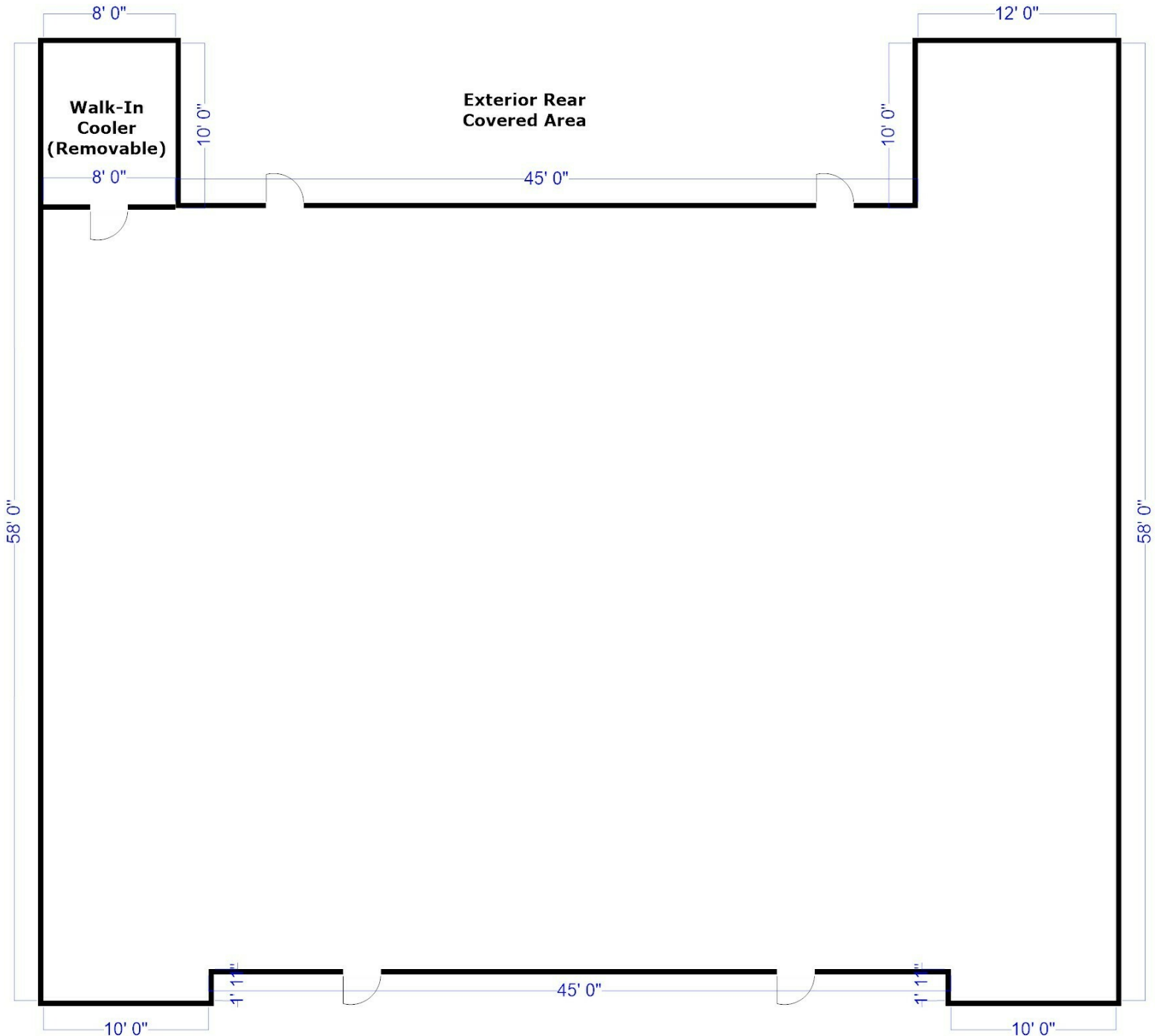
FOR LEASE

# GREEN TREE PLAZA SHOPPING CENTER

840 WARRENTON RD. FREDERICKSBURG, VA 22406

## UNIT 100 FLOOR PLAN

\*Drawing not to scale. Measurements approx.



### PRESENTED BY:

**GEORGE CHARLTON**

**ASSOCIATE BROKER**

703.330.1224

george@weber-rector.com

Offering is subject to errors, omissions, prior sale, change in price, or withdrawal without notice.



COMMERCIAL REAL ESTATE SERVICES

9401 Battle Street Manassas, VA 20110

[www.Weber-Rector.com](http://www.Weber-Rector.com)



FOR LEASE

# GREEN TREE PLAZA SHOPPING CENTER

840 WARRENTON RD. FREDERICKSBURG, VA 22406

## ADDITIONAL PHOTOS - UNIT 100



### PRESENTED BY:

**GEORGE CHARLTON**

**ASSOCIATE BROKER**

703.330.1224

[george@weber-rector.com](mailto:george@weber-rector.com)

Offering is subject to errors, omissions, prior sale, change in price, or withdrawal without notice.



COMMERCIAL REAL ESTATE SERVICES

9401 Battle Street Manassas, VA 20110

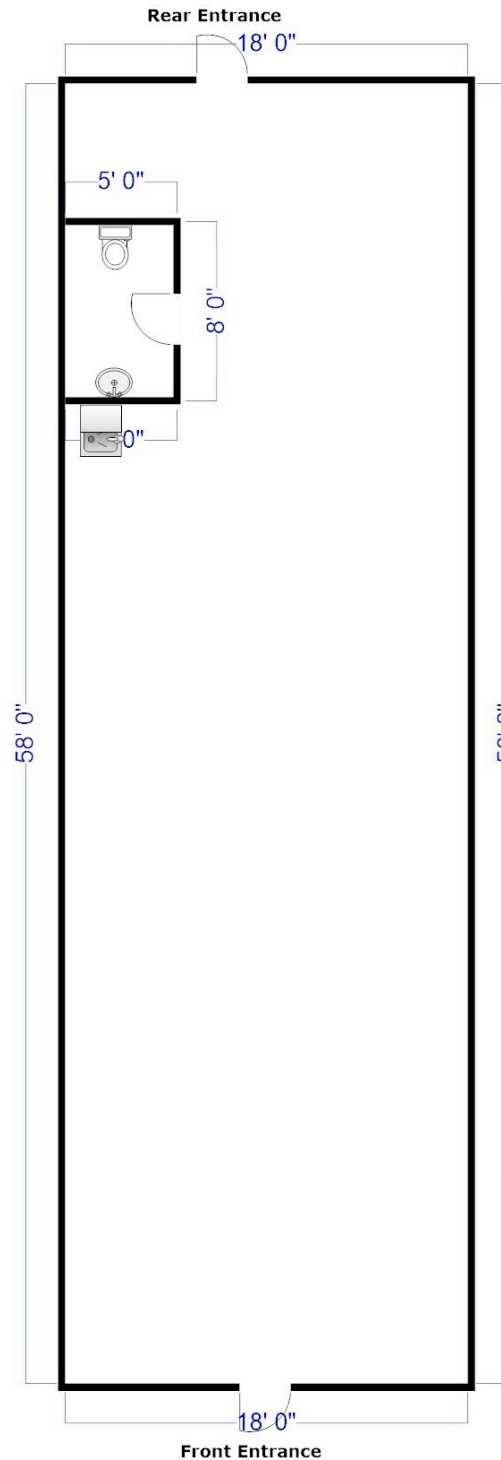
[www.Weber-Rector.com](http://www.Weber-Rector.com)

FOR LEASE

# GREEN TREE PLAZA SHOPPING CENTER

840 WARRENTON RD. FREDERICKSBURG, VA 22406

## UNIT 103 FLOOR PLAN



\*Drawing not to scale. Measurements approx.

PRESENTED BY:

GEORGE CHARLTON

ASSOCIATE BROKER

703.330.1224

george@weber-rector.com

Offering is subject to errors, omissions, prior sale, change in price, or withdrawal without notice.



COMMERCIAL REAL ESTATE SERVICES

9401 Battle Street Manassas, VA 20110

[www.Weber-Rector.com](http://www.Weber-Rector.com)



FOR LEASE

# GREEN TREE PLAZA SHOPPING CENTER

840 WARRENTON RD. FREDERICKSBURG, VA 22406

## ADDITIONAL PHOTOS - UNIT 103



### PRESENTED BY:

**GEORGE CHARLTON**

**ASSOCIATE BROKER**

703.330.1224

george@weber-rector.com

Offering is subject to errors, omissions, prior sale, change in price, or withdrawal without notice.



COMMERCIAL REAL ESTATE SERVICES

9401 Battle Street Manassas, VA 20110

[www.Weber-Rector.com](http://www.Weber-Rector.com)



FOR LEASE

# GREEN TREE PLAZA SHOPPING CENTER

840 WARRENTON RD. FREDERICKSBURG, VA 22406

## RETAILER MAP



### PRESENTED BY:

**GEORGE CHARLTON**

ASSOCIATE BROKER

703.330.1224

george@weber-rector.com

Offering is subject to errors, omissions, prior sale, change in price, or withdrawal without notice.



COMMERCIAL REAL ESTATE SERVICES

9401 Battle Street Manassas, VA 20110

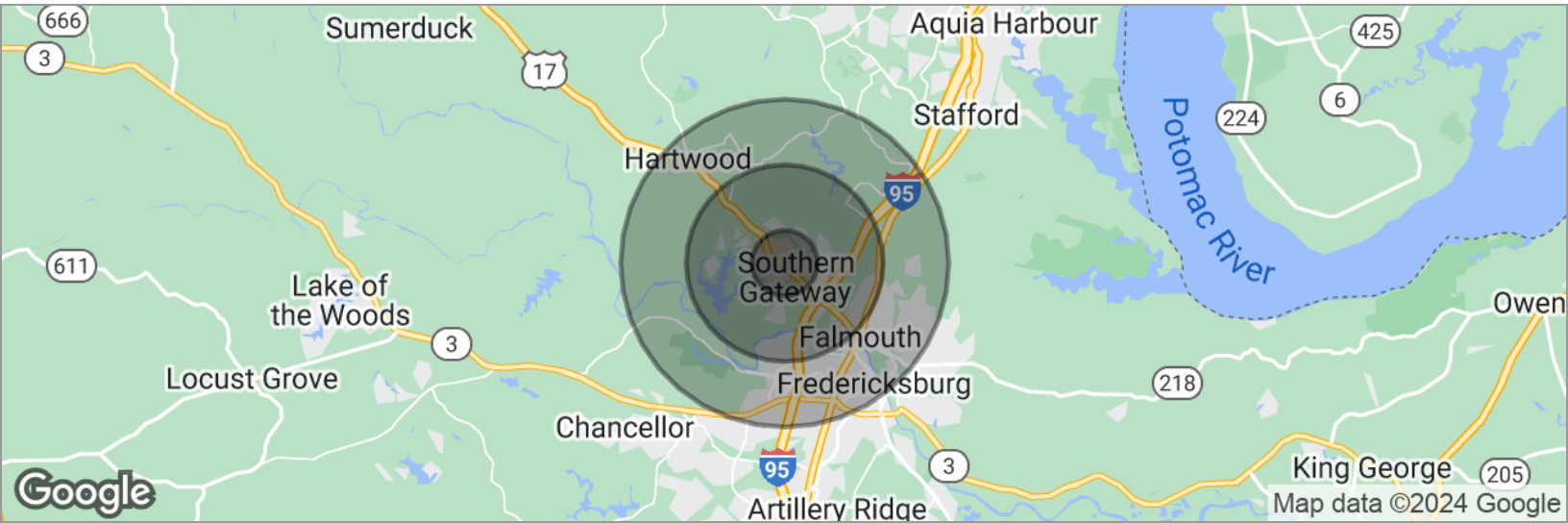
[www.Weber-Rector.com](http://www.Weber-Rector.com)

FOR LEASE

# GREEN TREE PLAZA SHOPPING CENTER

840 WARRENTON RD. FREDERICKSBURG, VA 22406

## DEMOGRAPHICS MAP



POPULATION	1 MILE	3 MILES	5 MILES
Total population	6,613	29,287	70,603
Median age	33.5	36	36.8
Median age (male)	32.4	34.7	35.8
Median age (Female)	34.5	37.10	37.8
HOUSEHOLDS & INCOME	1 MILE	3 MILES	5 MILES
Total households	2,405	10,264	25,452
# of persons per HH	2.7	2.8	2.7
Average HH income	\$110,944	\$110,646	\$110,562
Average house value	\$309,402	\$317,515	\$344,189

\* Demographic data derived from 2020 ACS - US Census & 2023 Costar Estimates.

### PRESENTED BY:

**GEORGE CHARLTON**

ASSOCIATE BROKER

703.330.1224

george@weber-rector.com

Offering is subject to errors, omissions, prior sale, change in price, or withdrawal without notice.



COMMERCIAL REAL ESTATE SERVICES

9401 Battle Street Manassas, VA 20110

[www.Weber-Rector.com](http://www.Weber-Rector.com)



SBA

HUBZone Qualification Report

[View on HUBZone Map](#)



840 Warrenton Rd, Fredericksburg, VA  
22406, USA

38.356018°, -77.511196°



Qualified HUBZone

until Jul 01, 2026



Redesignated Census Tract

Expires Jul 01, 2026

Designation Details

Redesignated Census Tract	
Tract ID:	51179010304
County:	Stafford County
State:	VA