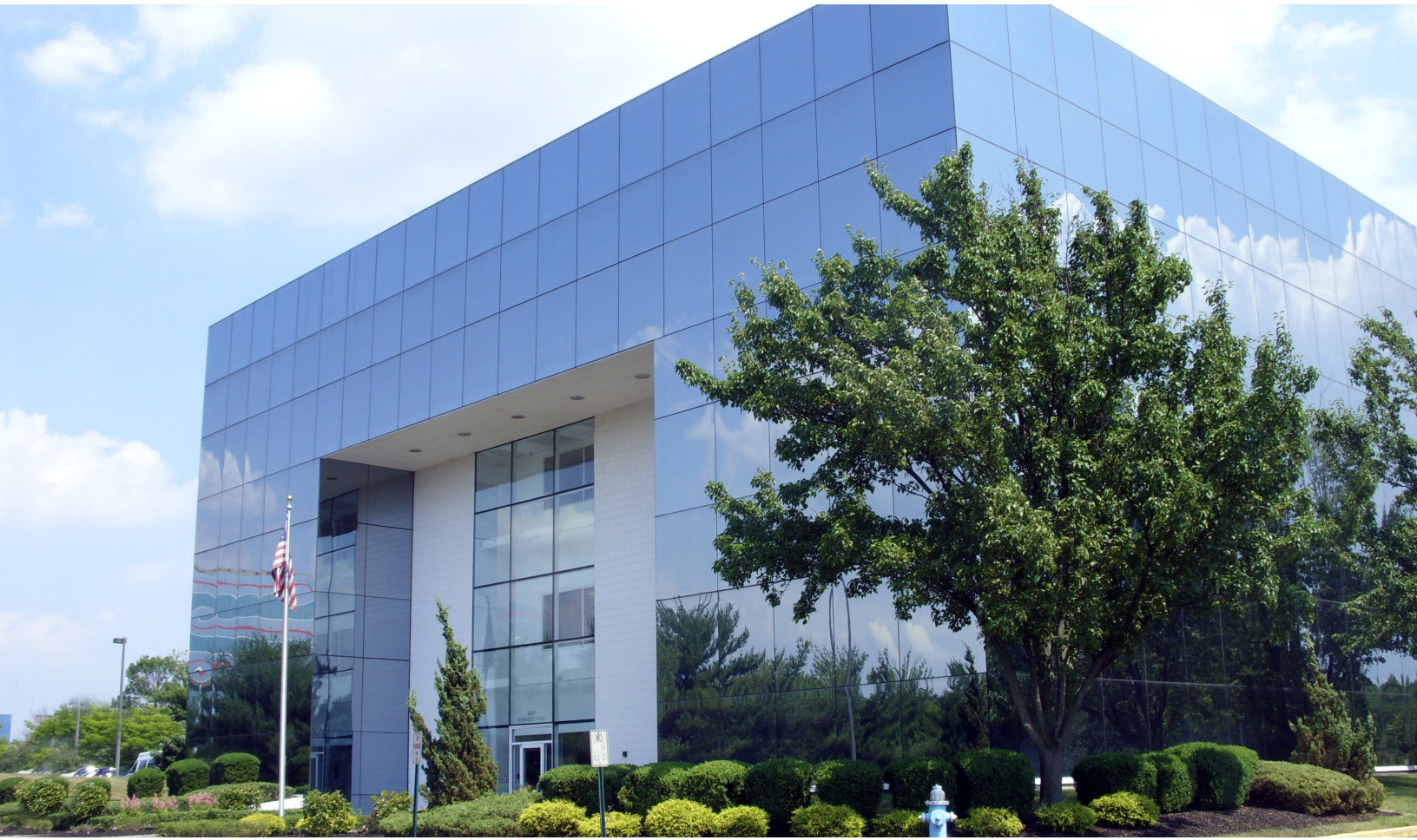


**HORIZON CORPORATE CENTER**  
1000 CRAWFORD PLACE, MOUNT LAUREL, NJ



**PRIME OFFICE SPACE  
JUST OFF ROUTE 73**

SUITES FOR  
LEASE FROM  
**1,522 SF to  
2,794 SF**



LEASE RATE  
**\$19.00 PSF**  
+ ELECTRIC & JANITORIAL



NAI Mertz | 21 Roland Avenue  
Mount Laurel, NJ 08054  
+1 856 234 9600 | [naimertz.com](http://naimertz.com)

**FOR MORE INFORMATION**

Rebecca Ting, SIOR  
☎ +1 856 234 9600 ext 206  
✉ [rebecca.ting@naimertz.com](mailto:rebecca.ting@naimertz.com)

Julie Kronfeld, SIOR  
☎ +1 856 802 6516  
✉ [julie.kronfeld@naimertz.com](mailto:julie.kronfeld@naimertz.com)

# CURRENT AVAILABILITIES

## 1000 CRAWFORD PLACE MOUNT LAUREL | NEW JERSEY

FIRST FLOOR	SF	
SUITE 140	1,522	<a href="#">CLICK HERE FOR VIRTUAL TOUR</a>
SUITE 160	2,412	

SECOND FLOOR	SF	
SUITE 200	856	
SUITE 220	1,938	<a href="#">AVAILABLE FOR SUBLEASE</a>

\*\*Suites 200 & 220 can be combined for 2,794 SF

THIRD FLOOR	SF	
SUITE 360 - <i>LEASING INCENTIVE</i>	2,281	<a href="#">CLICK HERE FOR VIRTUAL TOUR</a>

FOURTH FLOOR **FULLY LEASED**

### PROPERTY DESCRIPTION

Office suite availability within this four-story, 39,445 SF Class 'A' office building. Take advantage of this opportunity to lock up a long-term lease at one of the area's premier addresses!

### FOR MORE INFORMATION



Rebecca Ting, SIOR  
☎ +1 856 234 9600 ext 206  
✉ rebecca.ting@naimertz.com

Julie Kronfeld, SIOR  
☎ +1 856 802 6516  
✉ julie.kronfeld@naimertz.com



**SUITE 140**



**SUITE 360**

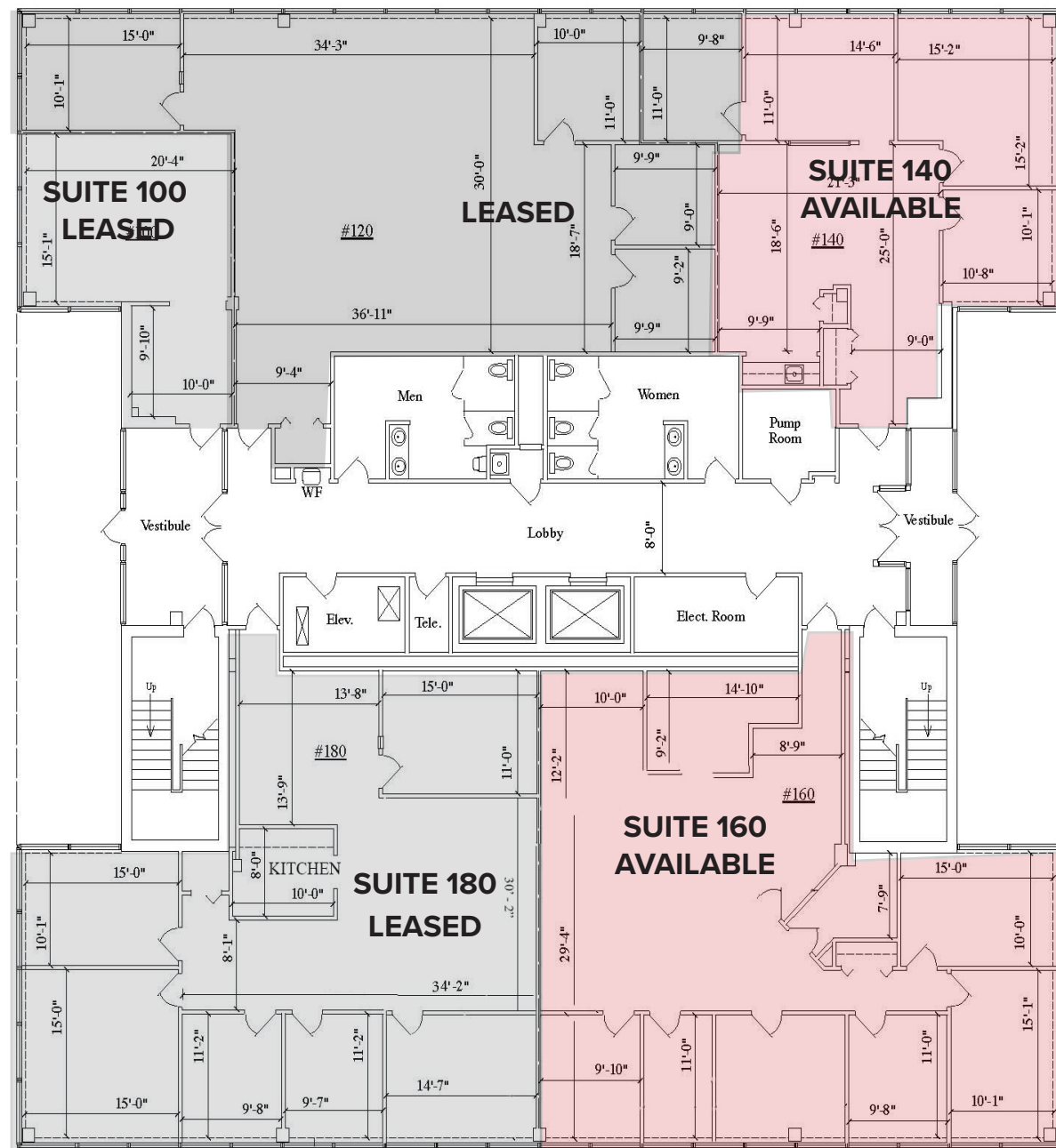
**LEASE RATE**  
**\$19.00 PSF**  
**+ ELECTRIC & JANITORIAL**

**IDEALLY LOCATED**  
**SUBURBAN**  
**OFFICE SPACE**



**3RD FLOOR HALL**

## FIRST FLOOR



SUITE 100  
548 SQ. FT.

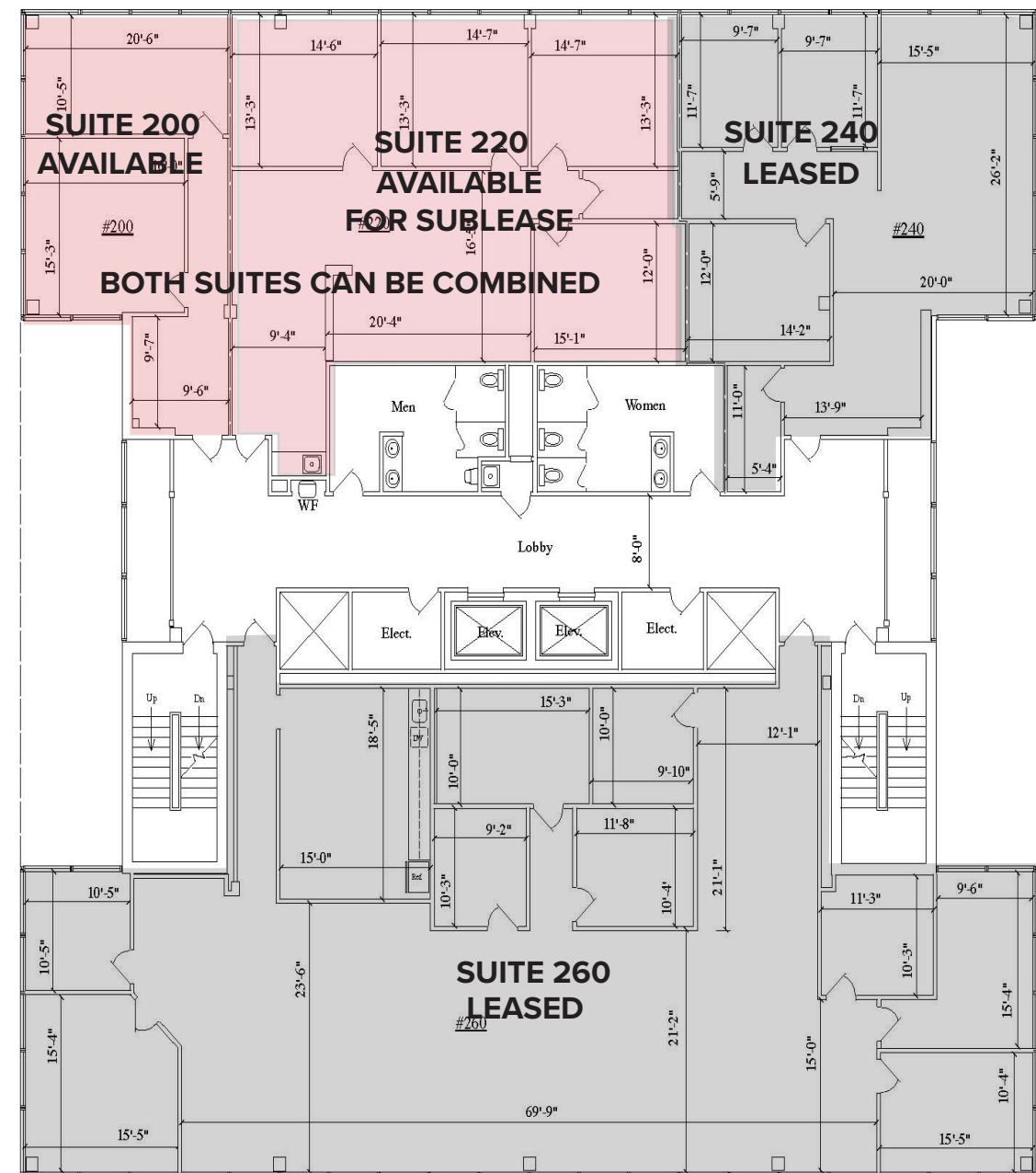
SUITE 120  
2,122 SQ. FT.

SUITE 140  
1,522 SQ. FT.

SUITE 160  
2,412 SQ. FT.

SUITE 180  
2,412 SQ. FT.

## SECOND FLOOR



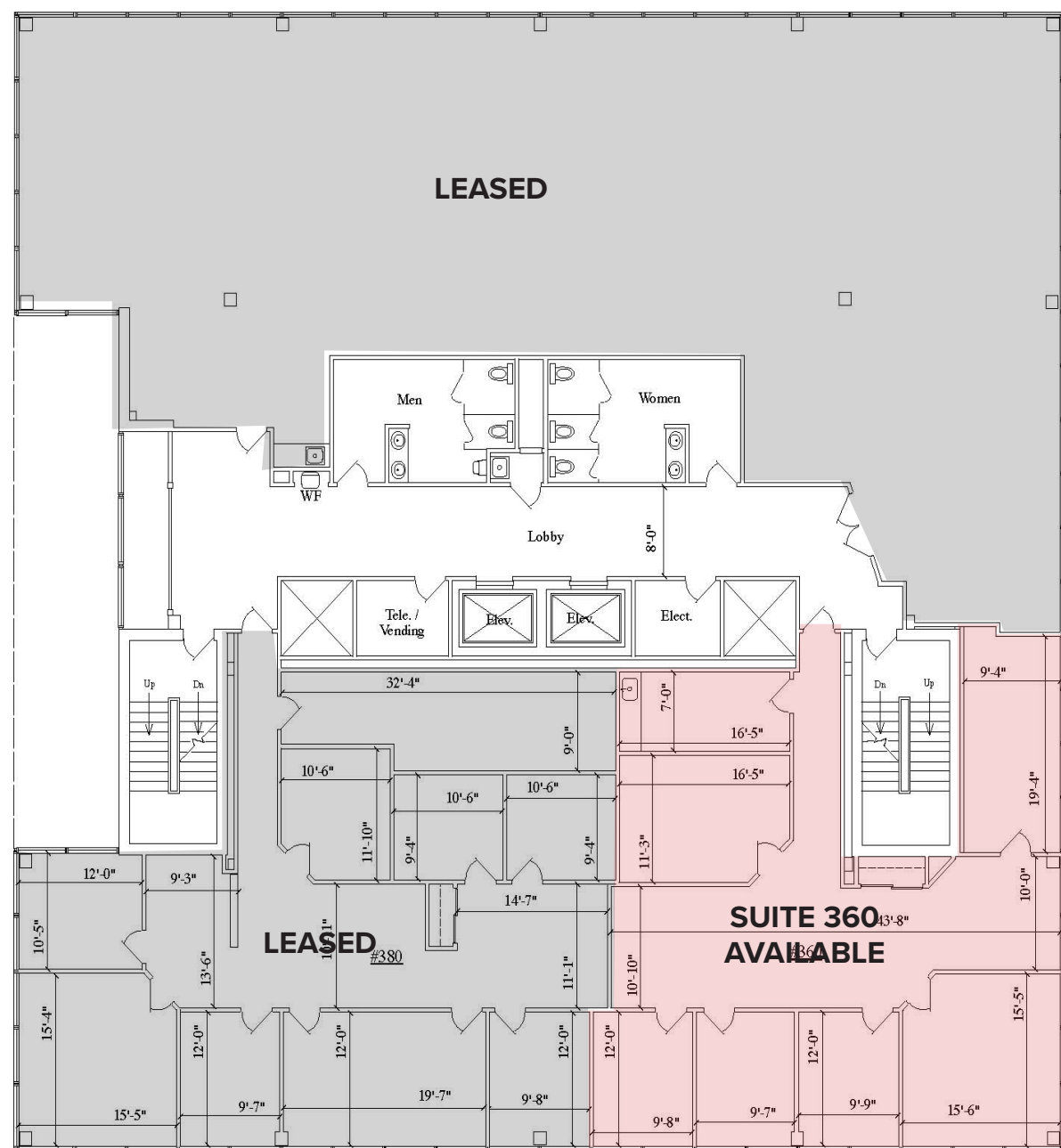
SUITE 200  
858 SQ. FT.

SUITE 220  
1,938 SQ. FT.

SUITE 240  
1,579 SQ. FT.

SUITE 260  
4,825 SQ. FT.

**THIRD FLOOR**



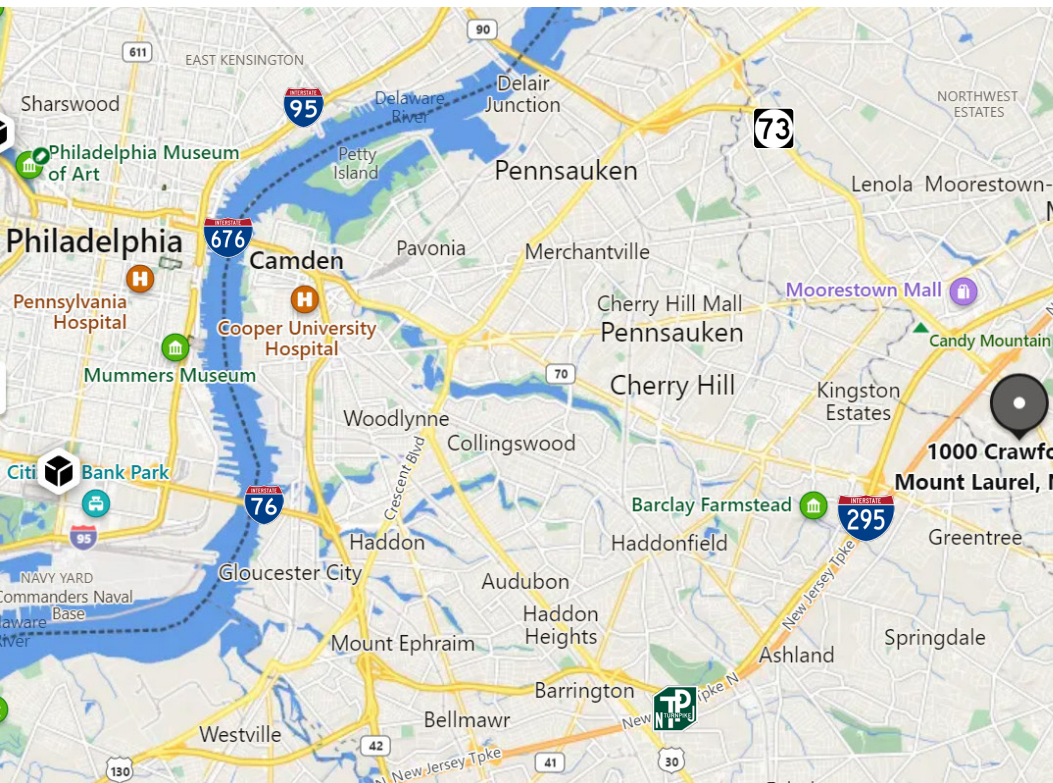
SUITE 360  
 2,281 SQ. FT.

SUITE 380  
 2,770 SQ. FT.



**1000 CRAWFORD PLACE**

**MOUNT LAUREL, NJ 08054**



**LOCATION INFORMATION**

- Located just off Route 73 in Horizon Corporate Center
- Minutes from NJ Turnpike (Exit 4), I-295 (Exit 34) and Routes 38 & 70
- Within 25 minutes Center City Philadelphia and Philadelphia International Airport



NAI Mertz | 21 Roland Avenue  
Mount Laurel, NJ 08054  
+1 856 234 9600 | [naimertz.com](http://naimertz.com)

**FOR MORE INFORMATION**

Rebecca Ting, SIOR  
☎ +1 856 234 9600 ext 206  
✉ [rebecca.ting@naimertz.com](mailto:rebecca.ting@naimertz.com)

Julie Kronfeld, SIOR  
☎ +1 856 802 6516  
✉ [julie.kronfeld@naimertz.com](mailto:julie.kronfeld@naimertz.com)