



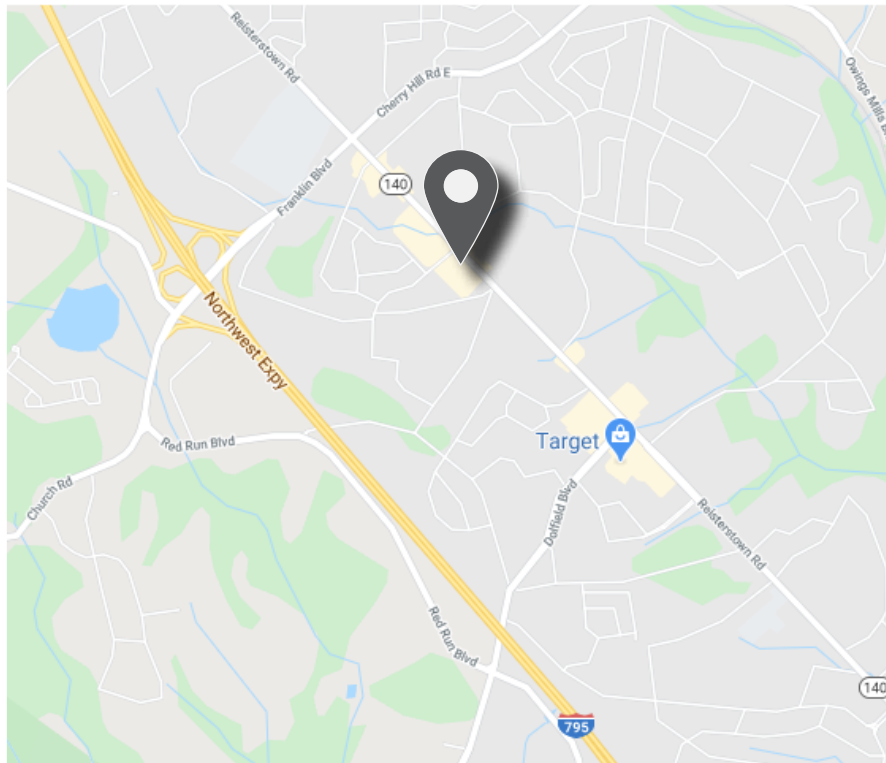
CHERRY VALLEY PLAZA

11604 REISTERSTOWN ROAD | REISTERSTOWN, MD 21136

11604 Reisterstown Road, Reisterstown, MD 21136



- ☑ **Total Square Feet:** 85,298
- ☑ **Parking Spaces:** 406± (4.8:1,000)
- ☑ **Zoning:** BL (Business Light)
- ☑ Located at a signalized entrance
- ☑ ADT 31,242+ on Reisterstown Road
- ☑ 8 miles from I-695 Beltway Exit #19
- ☑ 3 miles from the Owings Mills Metro Station



Demographics | 3 miles

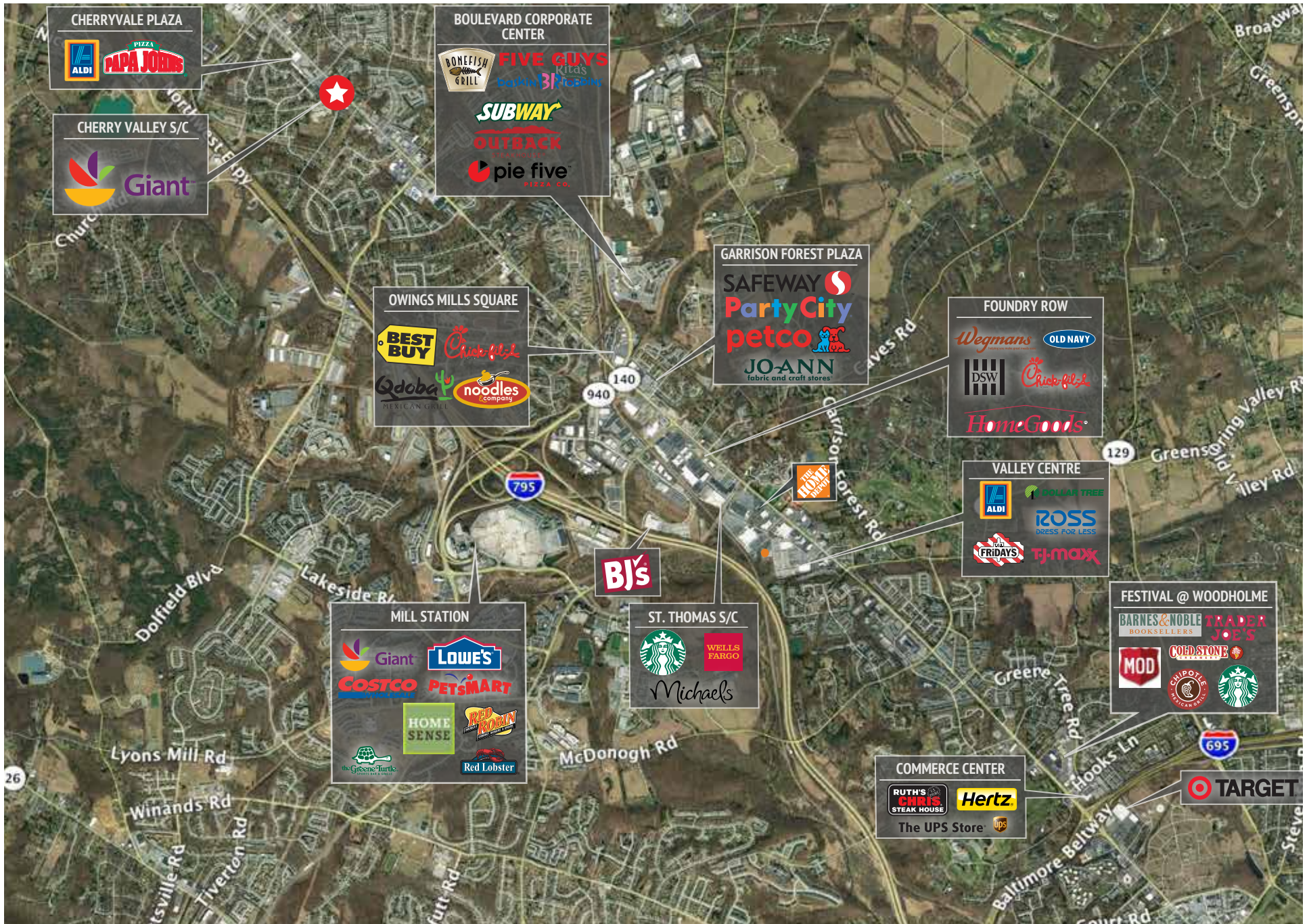
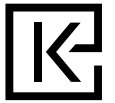
 **65,871**
population

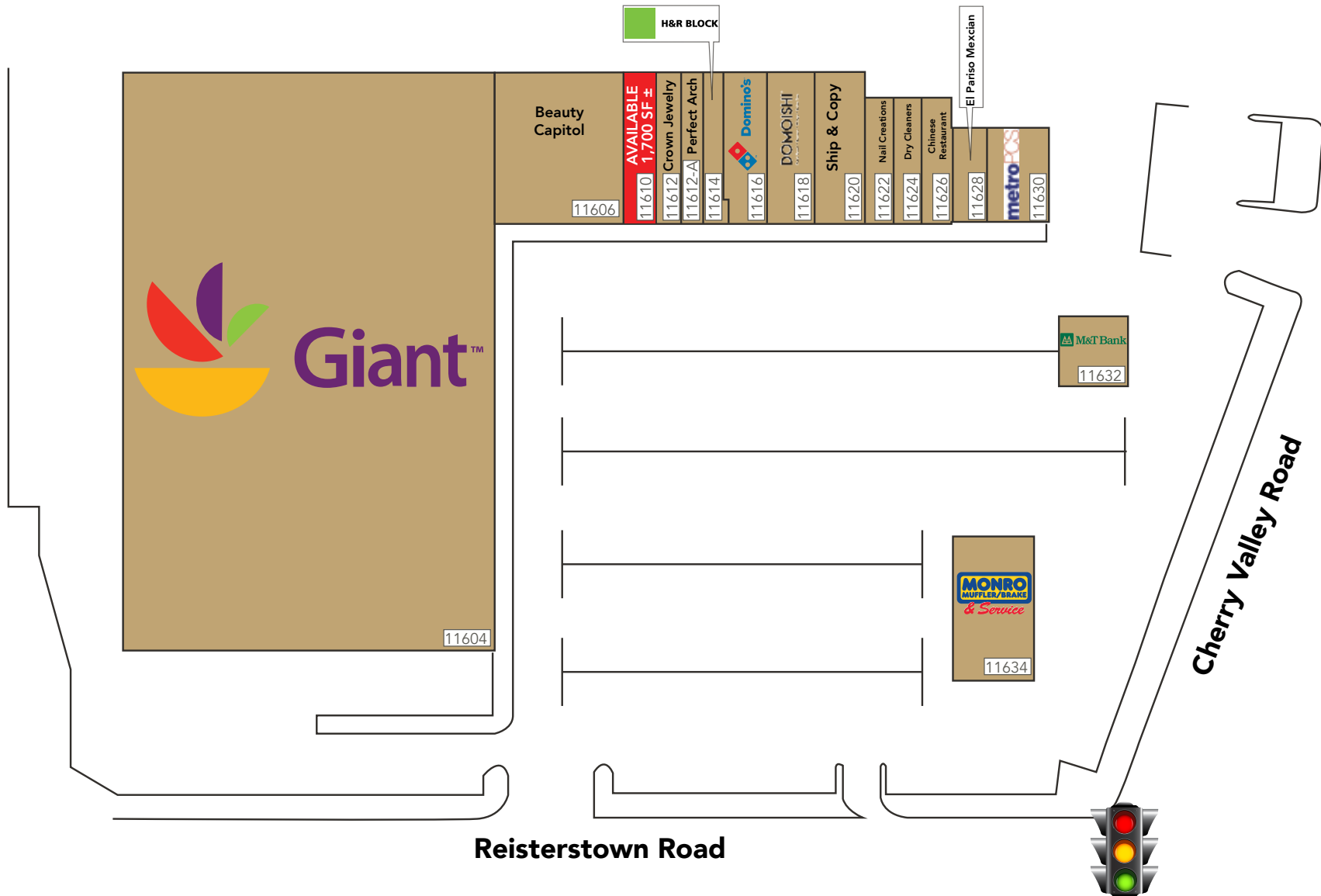
 **\$102,555**
avg HH income

 **35,275**
employees

Paul Weinberg
pweinberg@kleinenterprises.com
443.471.1663

Shannon Wissler
swissler@kleinenterprises.com
443.450.9150





No warranty or representation, express or implied, is made as to the accuracy of the information contained herein, and same is submitted subject to errors, omissions, change of price, rental or other conditions, withdrawal without notice, and to any specific listing conditions. All information should be independently verified prior to a purchase or lease of the property.

www.kleinenterprises.com