



1251 East Blvd

Charlotte, North Carolina 28203



Available for Sale

+/- 2,058 SF Retail Building on 0.058 AC in Dilworth

Property Overview

1251 East Blvd Available for Sale

+/- 2,058 SF retail building in Charlotte's Dilworth neighborhood, a historic area with upscale dining and shopping along East Boulevard. The area is known for its walkable, urban village atmosphere with a mix of restaurants, shops, and residential properties. Located in close proximity to South End and Uptown, vibrant local dining, and entertainment. The building benefits from its proximity to prominent Kenilworth Commons with tenants such as Harris Teeter, TCBY, Jersey Mike's Subs, Foxcroft Food & Wine, Tacos 4 Life, YAFO Kitchen, and Dolce Osteria.

Property Details

Address 1251 East Blvd | Charlotte, NC 28203

Availability +/- 2,058 SF Retail Building Available for Sale

Acreage +/- 0.058 AC

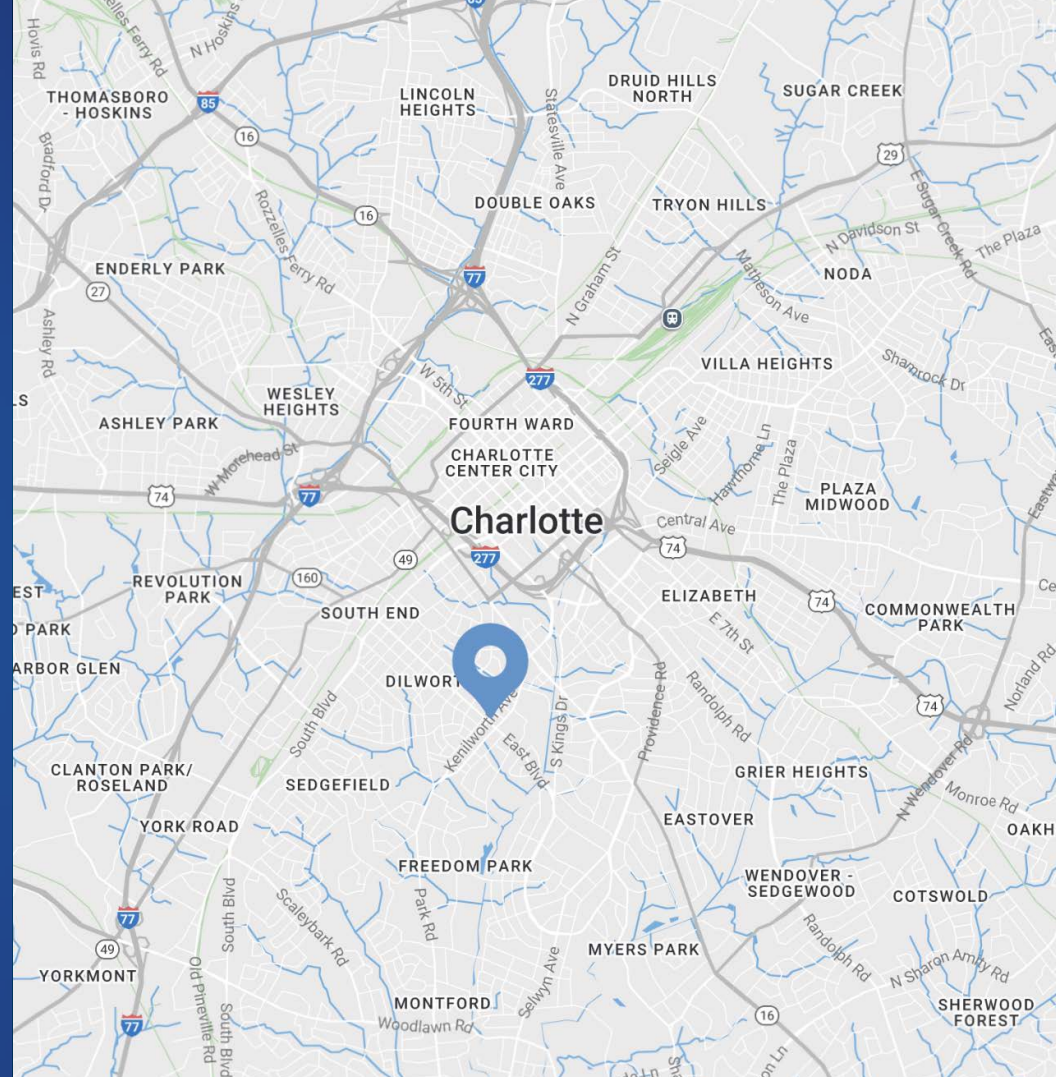
Parcel ID 12312716

Zoning NC - Neighborhood Center

Delivery Second-Generation Retail/Office

Traffic Counts East Blvd | 16,500 VPD
Kenilworth Ave | 11,500 VPD

Sale Price Call for Pricing



Demographics

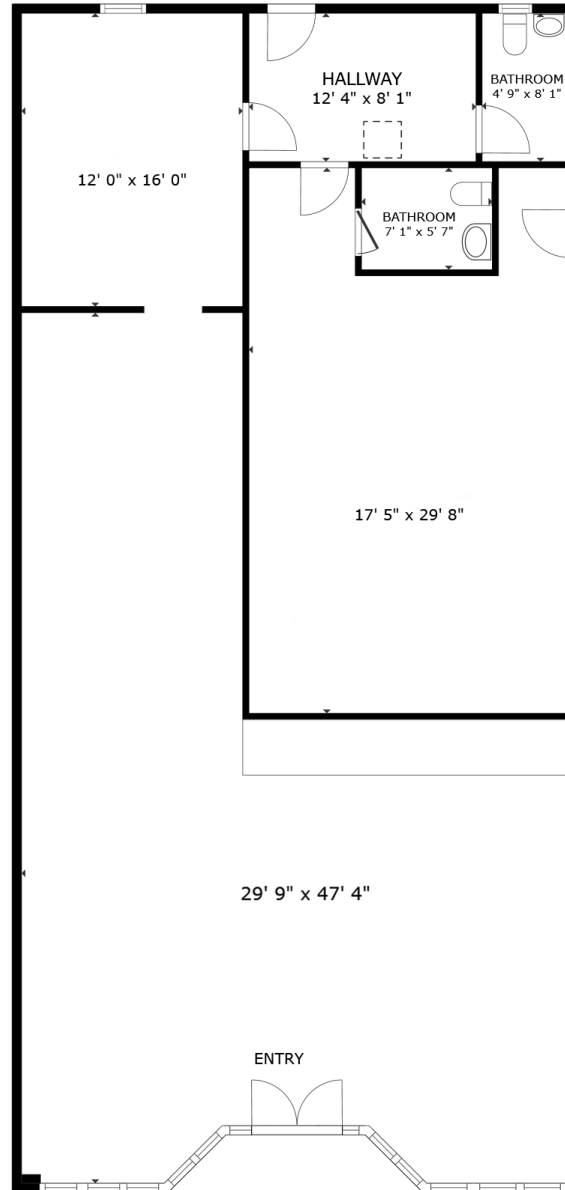
RADIUS	1 MILE	3 MILE	5 MILE
2025 Population	15,080	135,034	286,962
Avg. Household Income	\$210,529	\$160,998	\$144,366
Median Household Income	\$133,262	\$104,003	\$89,540
Households	7,963	71,734	138,731
Daytime Employees	31,298	155,976	255,823



Available

+/- 2,058 SF

 Virtual Tour



Property Photos







Dilworth

Big City Convenience and Laid Back Suburban Living

Dilworth is one of Charlotte's most charming and historic neighborhoods, offering a perfect blend of old-world character and modern urban living. The area features tree-lined streets adorned with beautifully restored bungalows and Queen Anne homes, while the bustling East Boulevard is a hub of trendy boutiques and restaurants. Nestled between South End and Myers Park near the southern edge of Uptown Charlotte, Dilworth couples a leafy setting with unrivaled convenience for commuters headed into Uptown Charlotte. The neighborhood is exceptionally pedestrian-friendly, with sidewalk streets that welcome relaxed biking or strolling.



2.3 Mi

Distance to Uptown



155,976

Daytime Population (3 Mile)



89

Walkability Score



16,500

Vehicles per Day on East Blvd



Uptown

Kenilworth Commons



CLUB PILATES
tcbv

Site

Contact for Details

Josh Beaver

(704) 373-9797

josh@thenicholscompany.com



Website

www.TheNicholsCompany.com

Phone

Office (704) 373-9797

Fax (704) 373-9798

Address

1204 Central Avenue, Suite 201
Charlotte, NC 28204

This information has been obtained from sources believed to be reliable. While we do not doubt its accuracy, we have not verified it and make no guarantee, warranty or representation to independently confirm its accuracy and completeness.