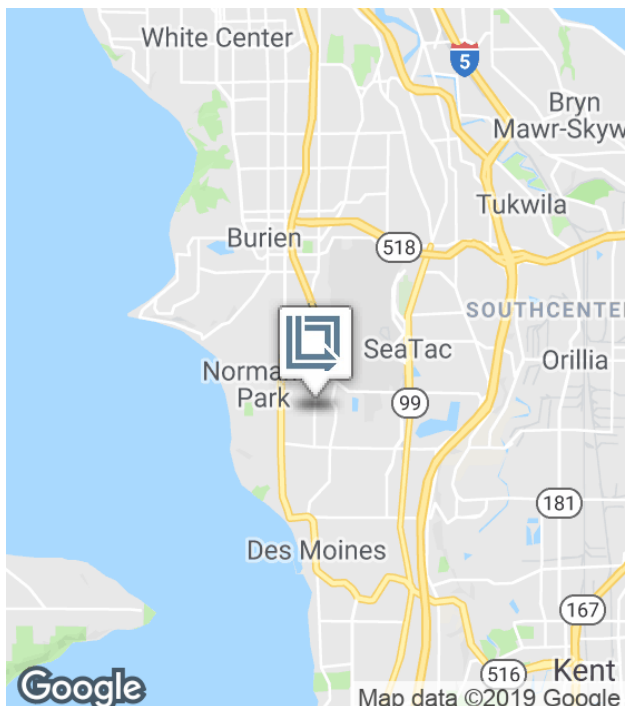


# 8,018 SF

Office Space For Lease

LBA Logistics 



## SeaTac Logistics Park 2, Bldg D

18800 8th Ave S, Suite 2400, SeaTac, WA 98148 USA

- 8,018 square feet (office)
- Located within 5 minutes of cargo entrance to SeaTac International Airport
- Spacious locations overlooking Mt. Rainier & airport runways

For more information:

**Arie Salomon, SIOR, CCIM**

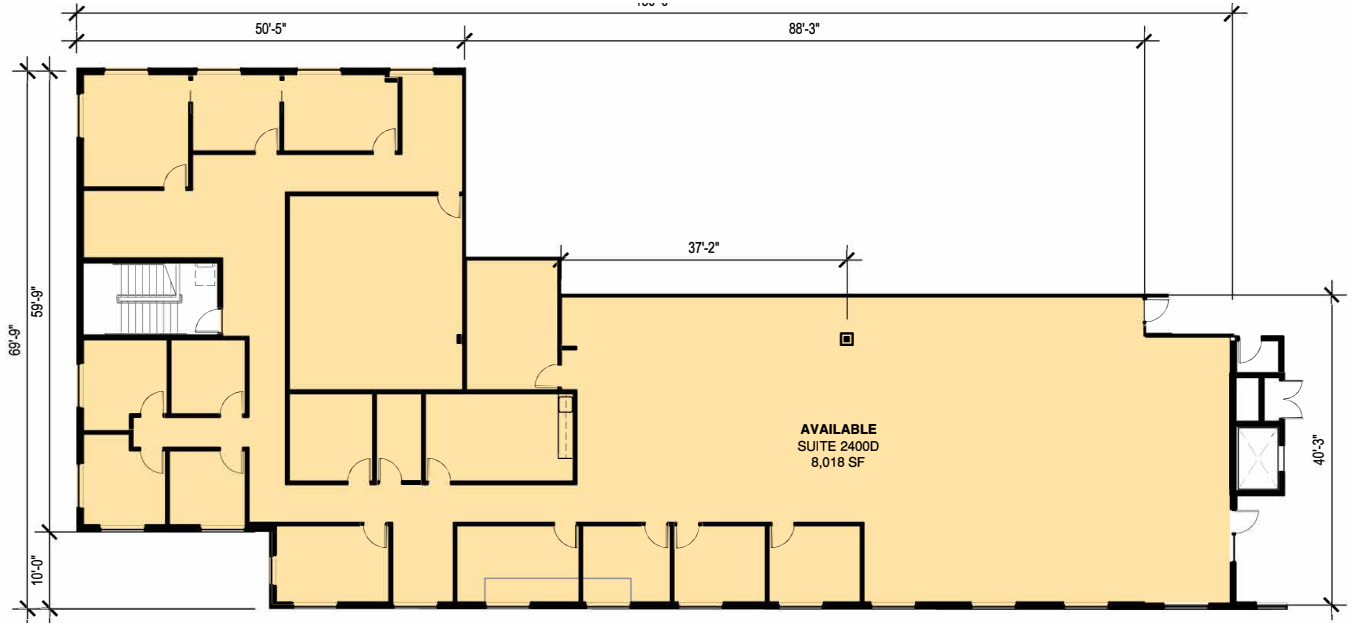
+1 425 586 5636 • [asalomon@nai-psp.com](mailto:asalomon@nai-psp.com)

**Connor Powell**

+1 425 586 5642 • [cpowell@nai-psp.com](mailto:cpowell@nai-psp.com)

# 8,018 SF

## Office Space For Lease



**SUITE 2400**

Scale: 0' 3' 3'12" 12' 30' 30'

0' 6' 18' 18'

