

For Lease

# Park Center

Orlando, FL 32809



Up to 6,563± sf available

**AVISON  
YOUNG**

**Lisa Bailey, SIOR**

Principal

407.440.6645

[lisa.bailey@avisonyoung.com](mailto:lisa.bailey@avisonyoung.com)

[avisonyoung.com](http://avisonyoung.com)



**AVISON  
YOUNG**

**park  
center**



## Introduction

Park Center consists of two (2), one-story office/flex buildings totaling 47,426± square feet. Both buildings offer a mix of office and warehouse space and the overall property has high quality landscaping, superior glass lines, as well as fresh exterior paint. The property has frontage on Sand Lake Road and is located within close proximity to Interstate 4, John Young Parkway, the Florida Turnpike, and the Beachline Expressway.

### PROPERTY HIGHLIGHTS

**GRADE LOADING**

**CLEAR HEIGHT: 12'-14'**

**100% HVAC SPACES**

**SOME SPACES: 9X10 OVERHEAD  
DOORS**

**DIRECTORY SIGNAGE**

**YEAR BUILT: 1982**

**ZONING: I-3/ORANGE COUNTY**

**PARKING RATIO: 3.12/1,000**





# Nearby Amenities

**Park Center**  
**Office/Flex Space For Lease**  
2430-2492 Sand Lake Road  
Orlando, Florida 32809

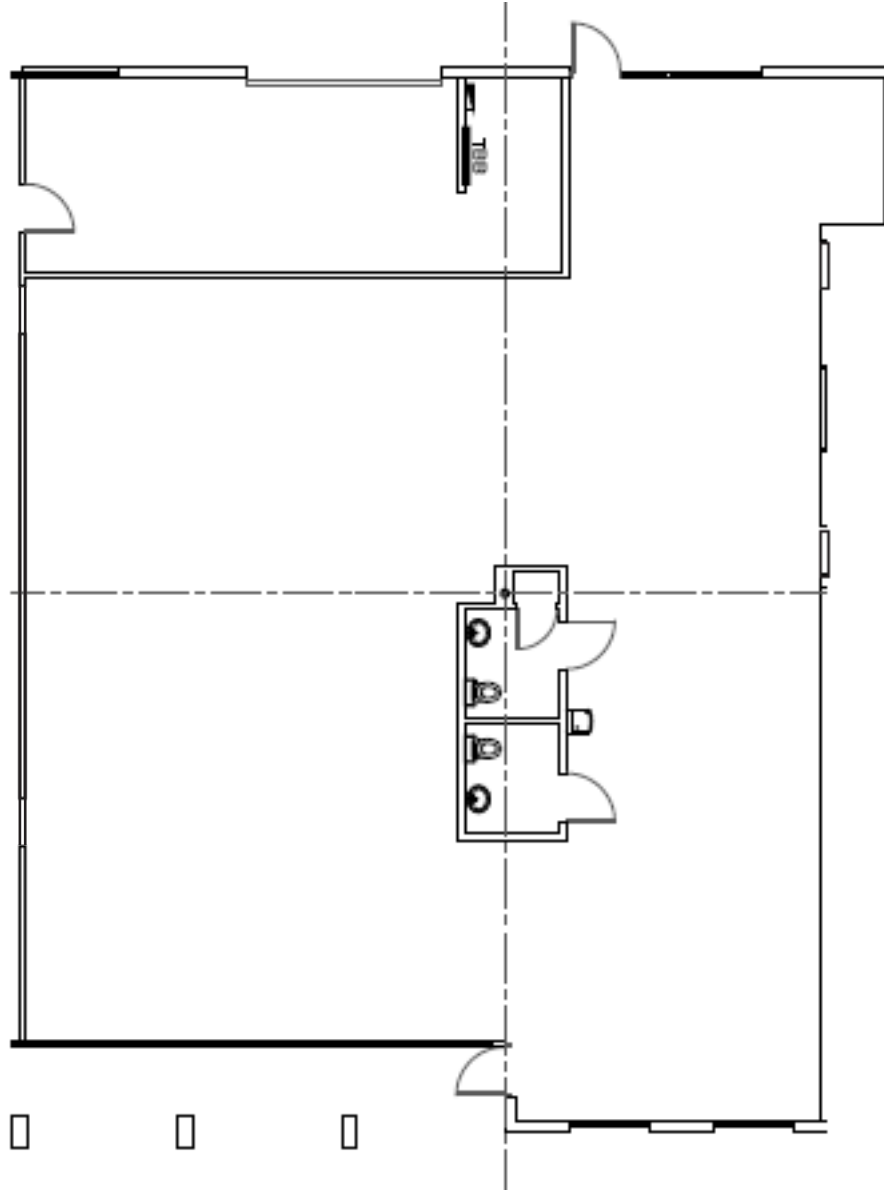


**AVISON  
YOUNG**

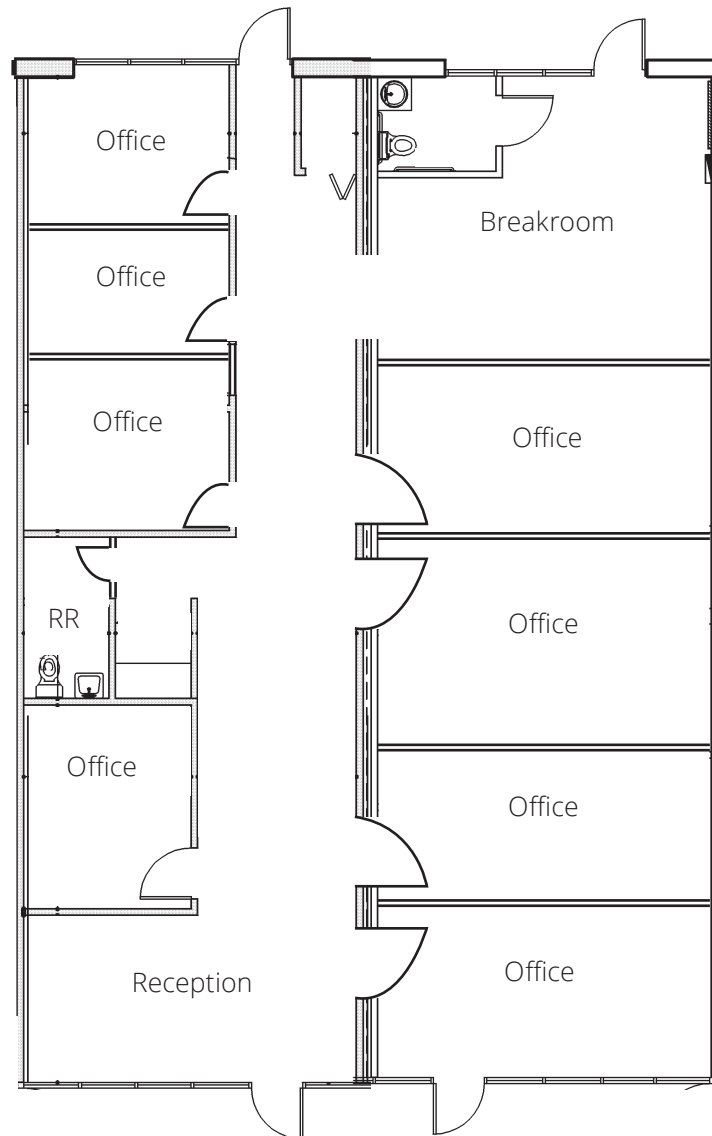
**Lisa Bailey, SIOR**  
Principal  
407.440.6645  
[lisa.bailey@avisonyoung.com](mailto:lisa.bailey@avisonyoung.com)

[avisonyoung.com](http://avisonyoung.com)

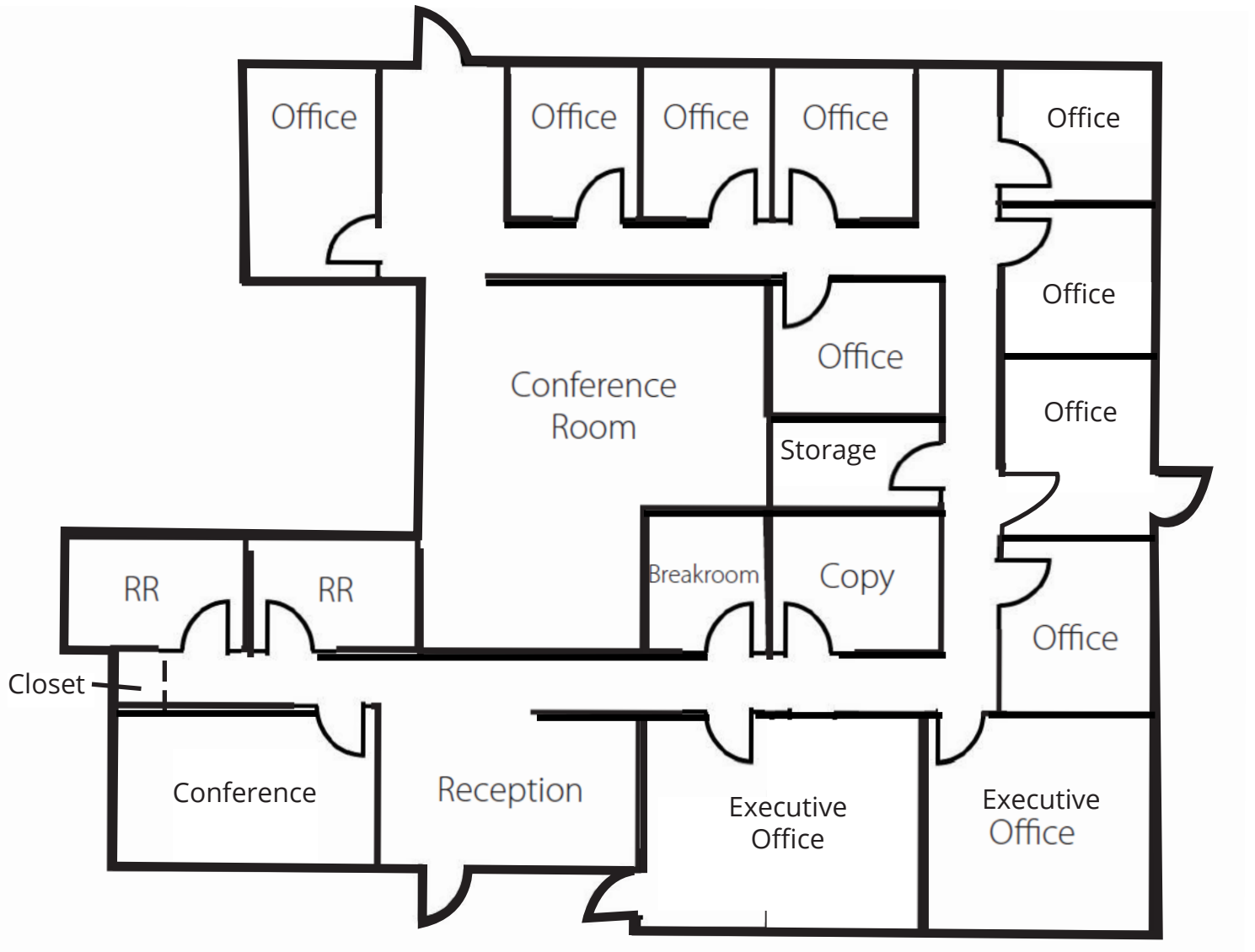
**Suite 2486**  
**3,184± sf**  
**Office Space**



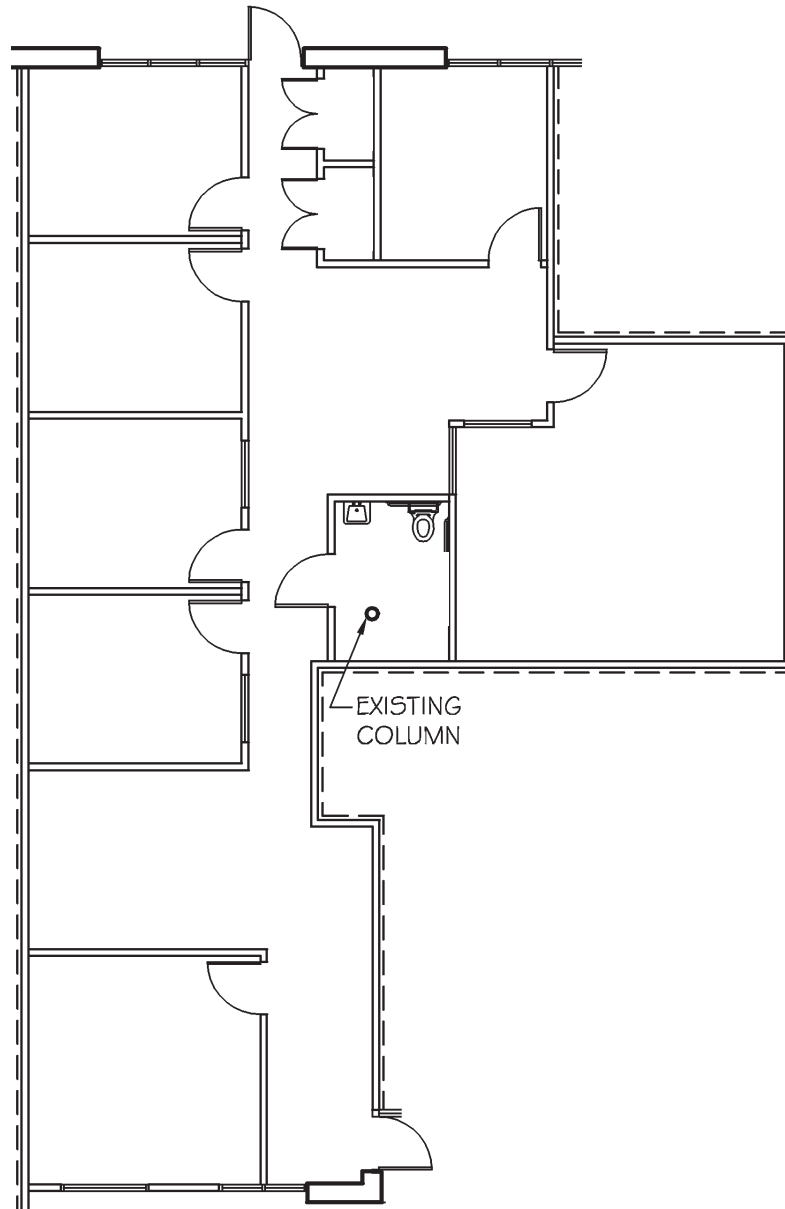
**Suite 2448-2450**  
**2,640± sf**  
**Office Space**



**Suite 2462**  
**4,664± sf**  
**Office Space**



**Suite 2464**  
**1,899± sf**  
**100% Office Space**





**Suite 2462-2464**  
**6,563± sf**  
**100% Office Space**

