

RETAIL FOR LEASE

288 106th Ave NE
Bellevue, WA 98004

Discover the vibrant pulse of urban living at Soma Towers, nestled in the heart of downtown Bellevue. Surrounded by a dynamic mix of residents and employees, Soma Towers epitomizes the essence of cosmopolitan living, offering an unparalleled platform for businesses to thrive.

Tiffini Connell
Blake Taylor
Kara Farley

WCCR

West Coast Commercial Realty



SOMA TOWERS
color outside the lines



SOMA TOWERS

color outside the lines

THE OPPORTUNITY

Urban Mix Food Court:

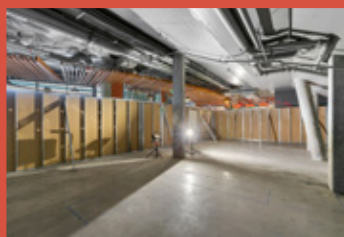
Culinary Adventures Await!

Immerse yourself in the culinary mosaic of our Urban Mix Food Court at Soma Towers. With available suites varying in size, this bustling hub invites you to showcase your innovative concepts alongside esteemed co-tenants including Just Poke, Xiao Chi Jie, Thai Grill, and L'Experience. Located amidst a vibrant community of residents and visitors, seize the opportunity to color outside the lines and redefine the gastronomic landscape of downtown Bellevue.

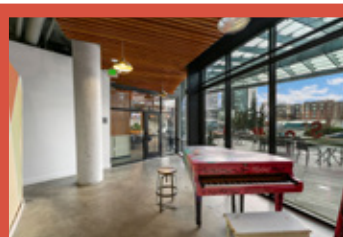


SOMA TOWERS

color outside the lines



Suite 102-D1
1,105 SF AVAILABLE
 Type 2 Hood Potential
 *Tenant to confirm with city



Suite 102-E
817 SF AVAILABLE
 Type 2 Hood Potential
 *Tenant to confirm with city



Suites 102-D1
 and 102-E
 can be
 combined
1,922 SF

Unit 102-D1
 1,150 SF
 AVAILABLE

Unit 102-E
 817 SF
 AVAILABLE

Common Space

102-C

LEASED

Unit 102-B
 1,121 SF
 AVAILABLE

102-F

LEASED

L'
 PARIS

Patio
 Seating
 350 SF



Suite 102-B
1,121 SF AVAILABLE
 Oyster Bar Concept

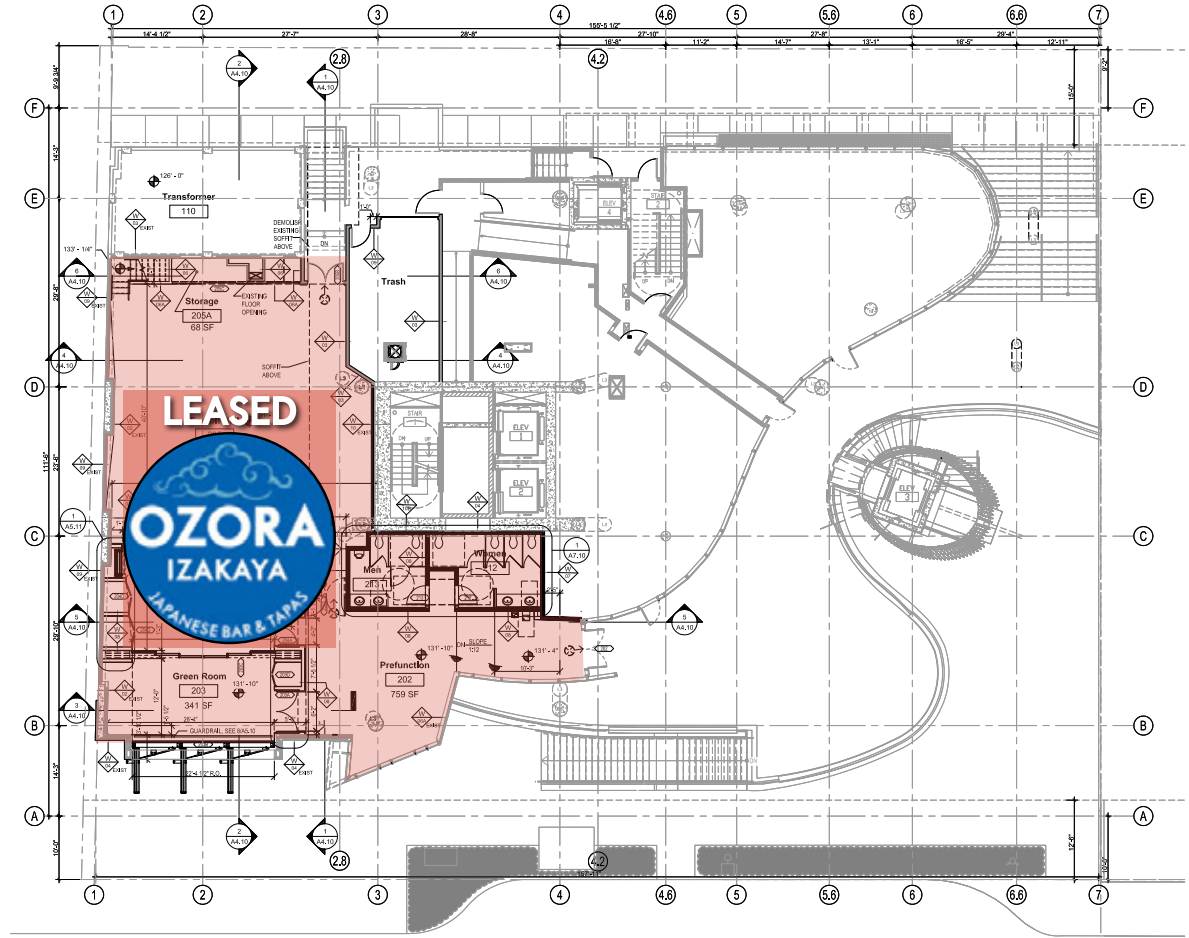




Former Theater Turned Entertainment Haven:

Suite 200 - 3,863 SF

Unleash Your Creativity!
Transforming the former theater space on the second floor of Soma Towers is your canvas to unleash creativity and captivate audiences. Whether you envision an event venue, a private concert hall, or a laughter-filled comedy club, this versatile space offers endless possibilities. Become a beacon of entertainment in downtown Bellevue.



01 LEVEL 2 EXHIBIT HALL FLOORPLAN
SCALE: 1/8" = 1'-0"

Type 1 Hood Potential *Tenant to confirm with the city



SOMA TOWERS

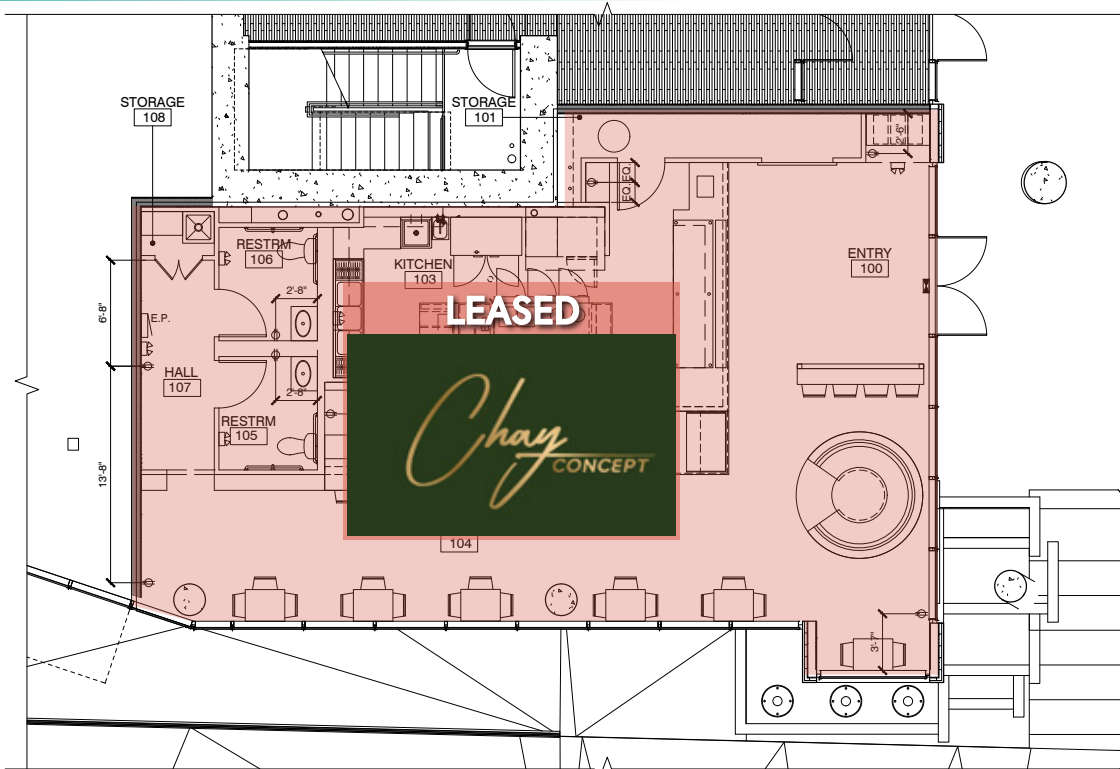
color outside the lines

Second-Generation Restaurant with Type 1 Hood with scrubber:

Suite 151 - 1,469 SF

Ready, Set, Cook!

Step into a turnkey restaurant space at Soma Towers, where culinary excellence meets convenience. With a modified Type 1 hood and previous infrastructure intact, kickstart your culinary journey without delay.



288 106th Avenue NE, Bellevue, WA 98004



SOMA TOWERS

color outside the lines

Why Choose Soma Towers?

- Prime location in downtown Bellevue, surrounded by residents, employees, and visitors.
- Versatile spaces cater to a diverse range of businesses, from culinary ventures to entertainment hotspots.
- Embrace the spirit of creativity with our slogan “Color outside the lines” and redefine urban living at Soma Towers.



WCCR

West Coast Commercial Realty

288 106th Avenue NE, Bellevue, WA 98004

SOMA TOWERS

color outside the lines



DEMOGRAPHICS

	2-Mile:	5-Mile:	10-Mile:
AVERAGE HOUSEHOLD INCOME	\$178,444	\$174,118	\$149,030
TOTAL POPULATION	50,339	278,030	1,316,594



SOMA TOWERS

color outside the lines

Connect with Us Today!

Elevate your business to new heights at Soma Towers, where innovation and opportunity converge. Contact us now to secure your place among Bellevue's most vibrant commercial spaces and embark on a journey of boundless possibilities. Your future awaits at Soma Towers - where creativity knows no bounds!

Tiffini Connell

tiffini@wccommercialrealty.com

Blake Taylor

blake@wccommercialrealty.com

Kara Farley

karaf@wccommercialrealty.com

WCCR

West Coast Commercial Realty

DISCLAIMER: The above information has been secured from sources believed to be reliable, however, no representations are made to its accuracy. Prospective tenants or buyers should consult their professional advisors and conduct their own independent investigation. Site plan and configuration are subject to change. Properties are subject to change in price and/or availability without notice. West Coast Commercial Realty, LLC

