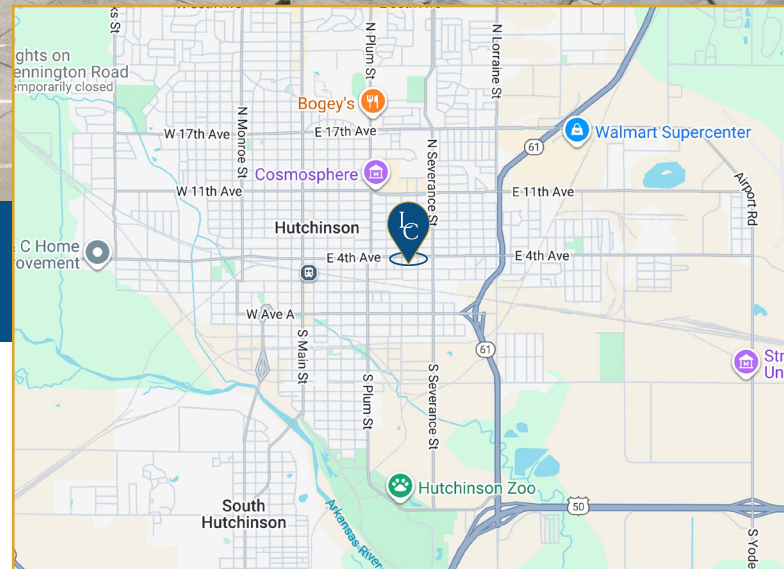




2,450SF RETAIL/FLEX SPACE **FOR LEASE**

921 E. 4th Hutchinson, KS 67501

Lease Rate: 1,800/Month
Available Space: Suite C - 2,450 SF
Storage room available for additional rate
Available Signage: Front of Building and Monument Signage Available
Area Neighbors O'Reilly Auto Parts, Salt City Pawn, Bold, Kwik Shop, and close to East 4th Ave. & K61 intersections



Maribeth Reimer



M: 620.727.7806



mreimer@landmarkrealestate.net

2,450SF RETAIL/FLEX SPACE FOR LEASE

921 E. 4th Hutchinson, KS 67501

HIGHLIGHTS

- High traffic corner of 4th & Severance
- Large open space with back room
- ADA approved handicap restrooms
- Separately metered space

Neighbors

- O'Reilly Auto Parts, Salt City Pawn, Bold, Kwik Shop, and close to East 4th Ave. & K61 intersections

Center Tenants

- Little Caesars, Advance America, & Food Bank of Hutchinson (3/26)

DEMOGRAPHICS

	1 Mile	3 Miles	5 Miles
Population:	9,361	38,343	44,965
Households:	3,881	16,386	18,991
Avg. HHI:	\$55,508	\$70,667	\$74,376



Maribeth Reimer



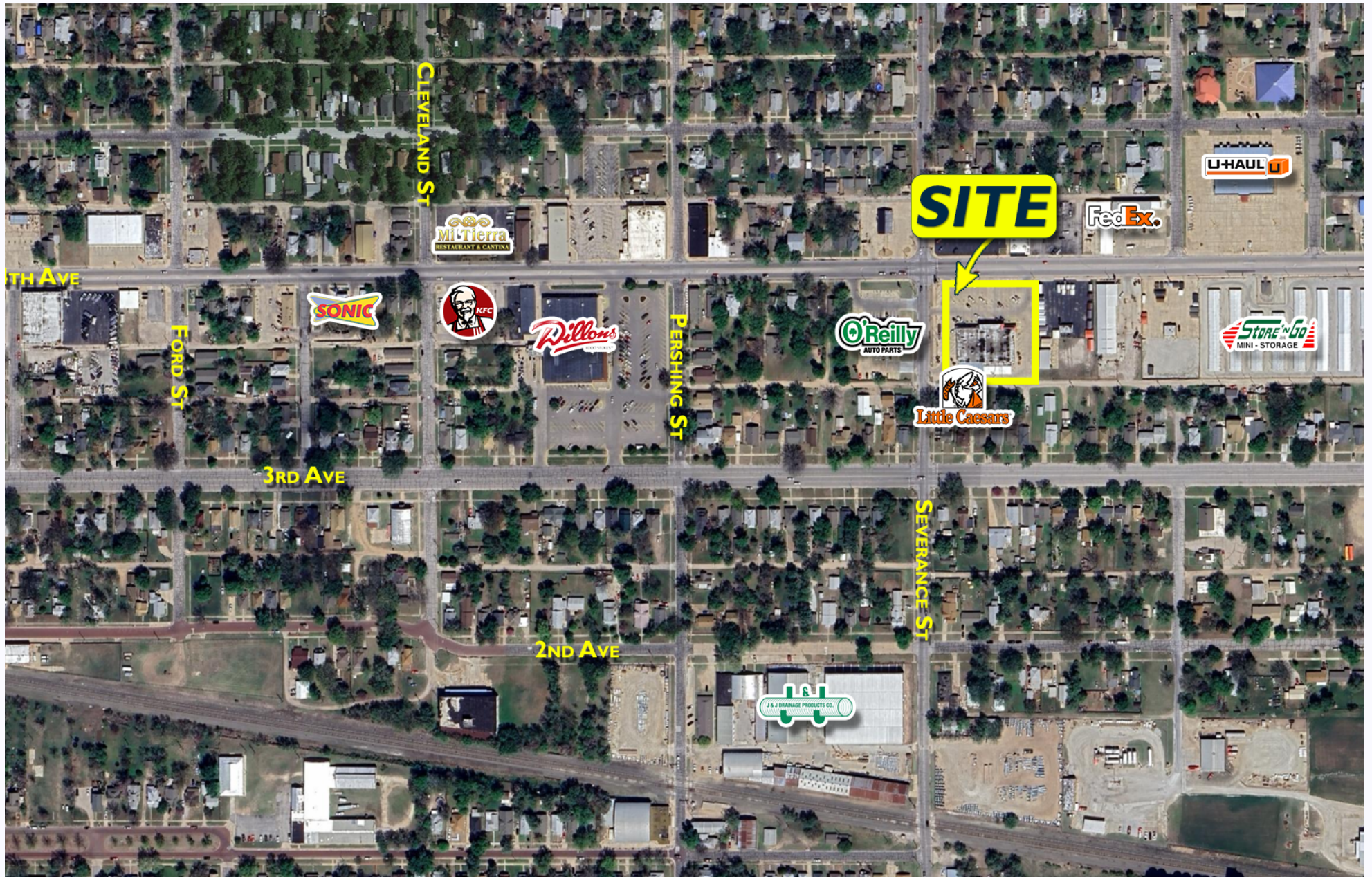
M: 620.727.7806



mreimer@landmarkrealestate.net



AERIAL



CRAIG SIMON, CCIM



M: (316) 204 - 0150



csimon@landmarkrealestate.net



MAKE YOUR MARK WITH LANDMARK

CONTACT THE EXPERT



MARIBETH REIMER

Sales Associate

Mobile: (620) 727-7806

mreimer@landmarkrealestate.net

ABOUT LANDMARK

With over **33 years of experience**, Landmark Commercial Real Estate has built a reputation as the leading commercial real estate firm in Wichita, Kansas. Our team provides unmatched expertise in the sale and purchase of commercial properties. As the #1 commercial real estate team in the region, we have consistently delivered results for both buyers and sellers, offering comprehensive market knowledge, strategic insights, and a commitment to client success. Whether you're looking to buy, sell, or Lease, Landmark Commercial Real Estate is your trusted partner for all commercial property needs.

DISCLAIMER


Information included herein was provided by third parties and should only be used for information purposes. Landmark Commercial Real Estate, Inc. and their respective agents, representatives, and employees, (i) make no representations or warranties of any kind, express or implied, with respect to the accuracy or completeness of any information herein, and (ii) shall have no liability whatsoever arising from any errors or discrepancies between the above listed information or actual documents.

COMPREHENSIVE COMMERCIAL REAL ESTATE FIRM

-  Sales & Leasing
-  Marketing & Events Team
-  In-House Counsel
-  Property Management
-  Support Staff
-  Portfolio Management
-  Industrial Specialists
-  Full-Service Commercial Development Group



 156 N. Emporia Ave, Wichita KS 67202

 O: (316) 262 - 2442

 landmarkrealestate.net

