

2418 Milledge St, East Point, GA 30344
+/- 0.85 Acres



- Development Opportunity, Commercial Corner Parcel
- Located in between Downtown East Point and Sylvan Rd Industrial District
- **Zoning:** C-2, Central Business District
- **Acreage:** +/- 0.85
- **Lot Square Footage:** +/- 36,972 SF
- **Topography:** Gentle Slope, Smooth Grade
- Open Lot allows for Various Intensive Commercial Uses
- Accessed via Milledge St
- 13 min drive to Hartsfield Jackson Airport and 3 min drive to East Point Marta Station.

CONTACT

Patty McGill, CCIM
Principal & Broker

—
404.285.4553
patty@themcgillco.com

THE
MCGILL co.

COMMERCIAL + INDUSTRIAL REAL ESTATE

FOR SALE
\$177,000

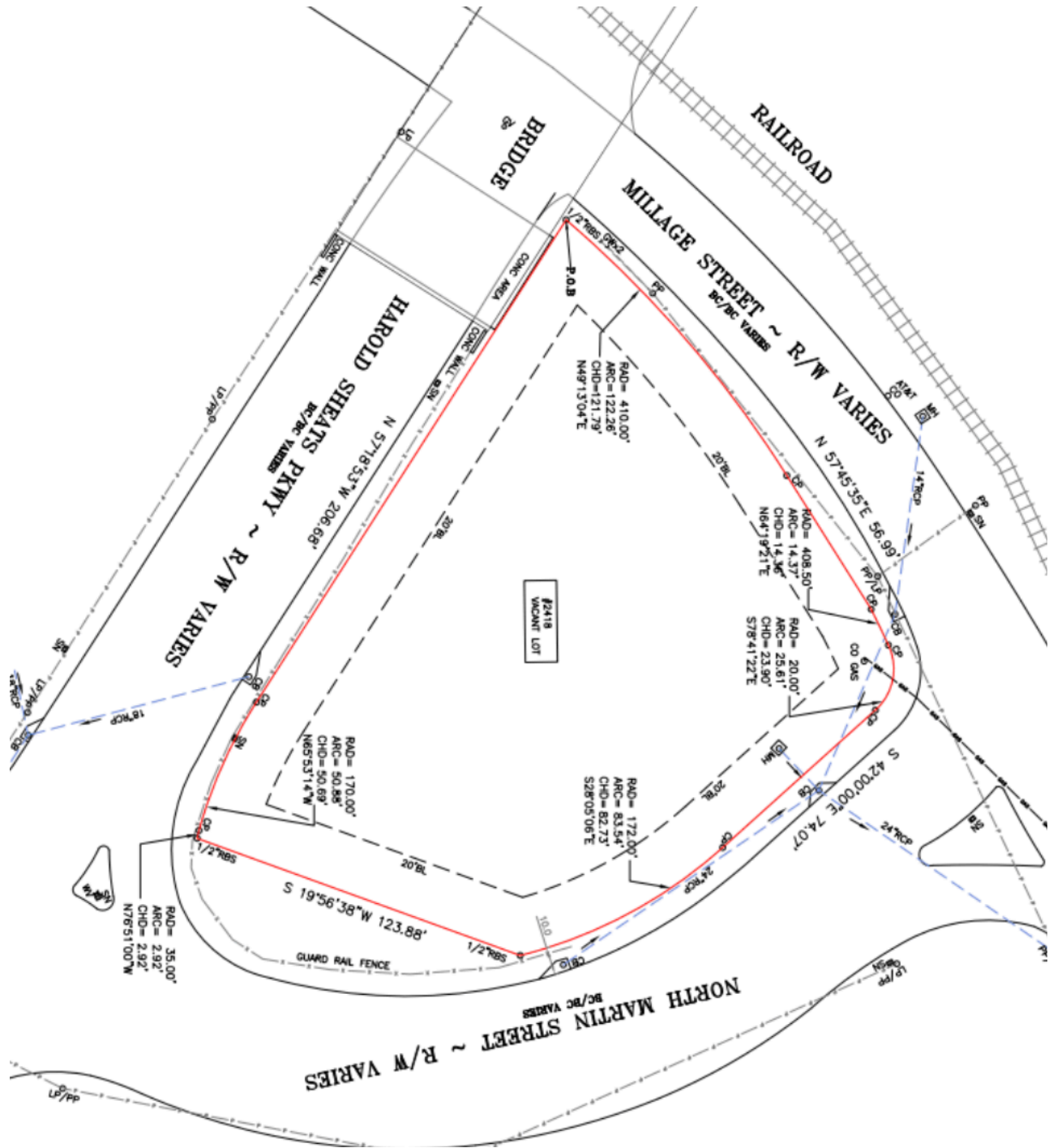


2418 Milledge St.
East Point, GA 30344

THE MCGILL CO.

COMMERCIAL + INDUSTRIAL REAL ESTATE

FOR SALE
\$177,000



INFORMATION CONTAINED HEREIN HAS BEEN OBTAINED FROM THE OWNER OF THE PROPERTY OR OTHER SOURCES THAT WE DEEM RELIABLE. WE HAVE NO REASON TO DOUBT IT'S ACCURACY, BUT WE DO NOT GUARANTEE IT. OFFER IS SUBJECT TO CHANGE WITHOUT NOTICE.

THE
MCGILL co.

COMMERCIAL + INDUSTRIAL REAL ESTATE

FOR SALE

\$177,000



2418 Milledge St.
East Point, GA 30344

INFORMATION CONTAINED HEREIN HAS BEEN OBTAINED FROM THE OWNER OF THE PROPERTY OR OTHER SOURCES THAT WE DEEM RELIABLE. WE HAVE NO REASON TO DOUBT IT'S ACCURACY, BUT WE DO NOT GUARANTEE IT. OFFER IS SUBJECT TO CHANGE WITHOUT NOTICE.