

7635 Lindbergh Dr, Gaithersburg, MD 20879

Zoned IL

**4.49 Acres Total
2.08 Usable**

**Parcel A
1.55 usable acres**

**Parcel B
.53 usable acres**

**Industrial Outdoor Storage Opportunity
4.49 Acres Available**



John Dettleff
703.485.8831
john.dettleff@jll.com

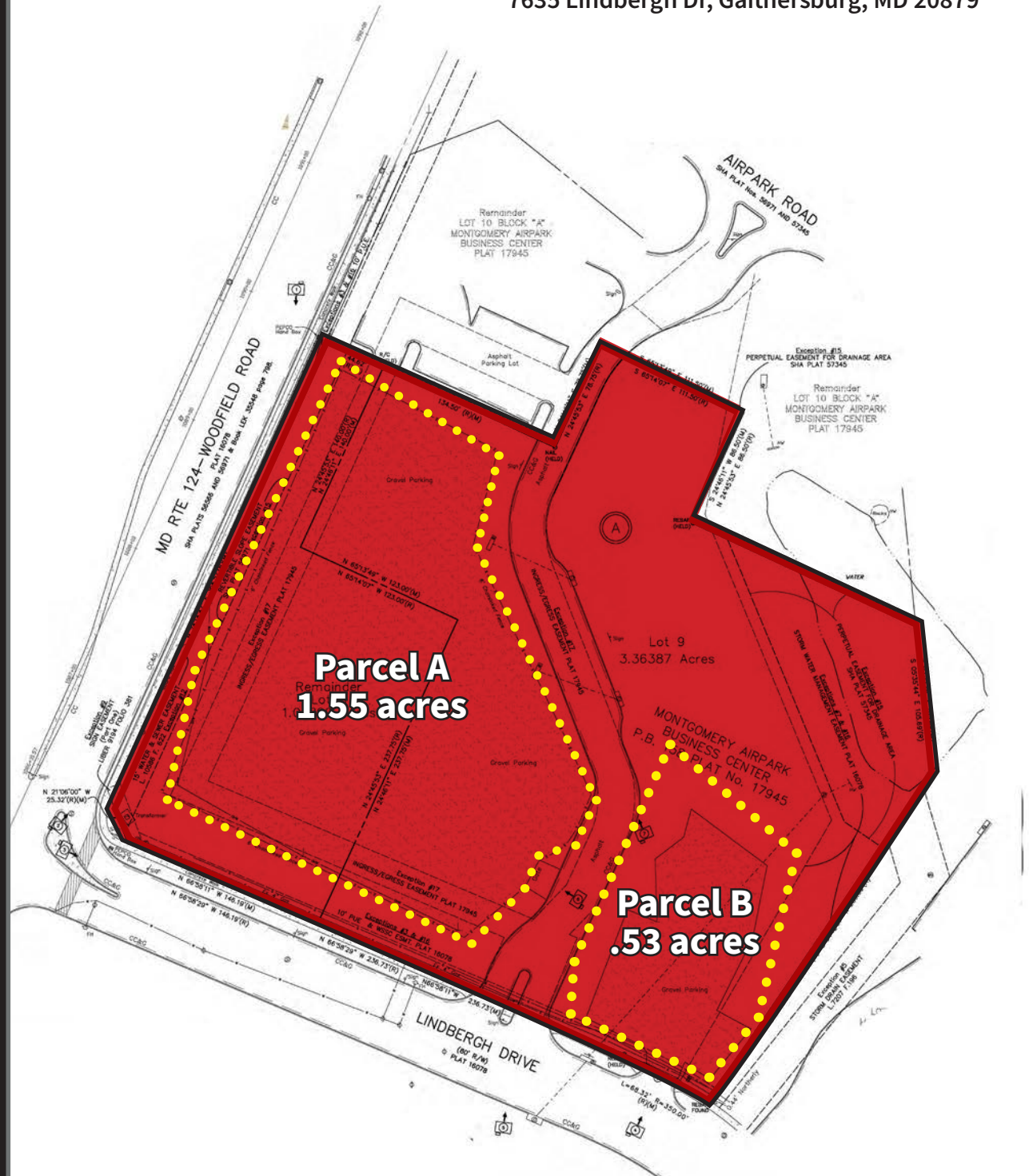
Sam Haas
443.878.3499
sam.haas@jll.com

Site Plan

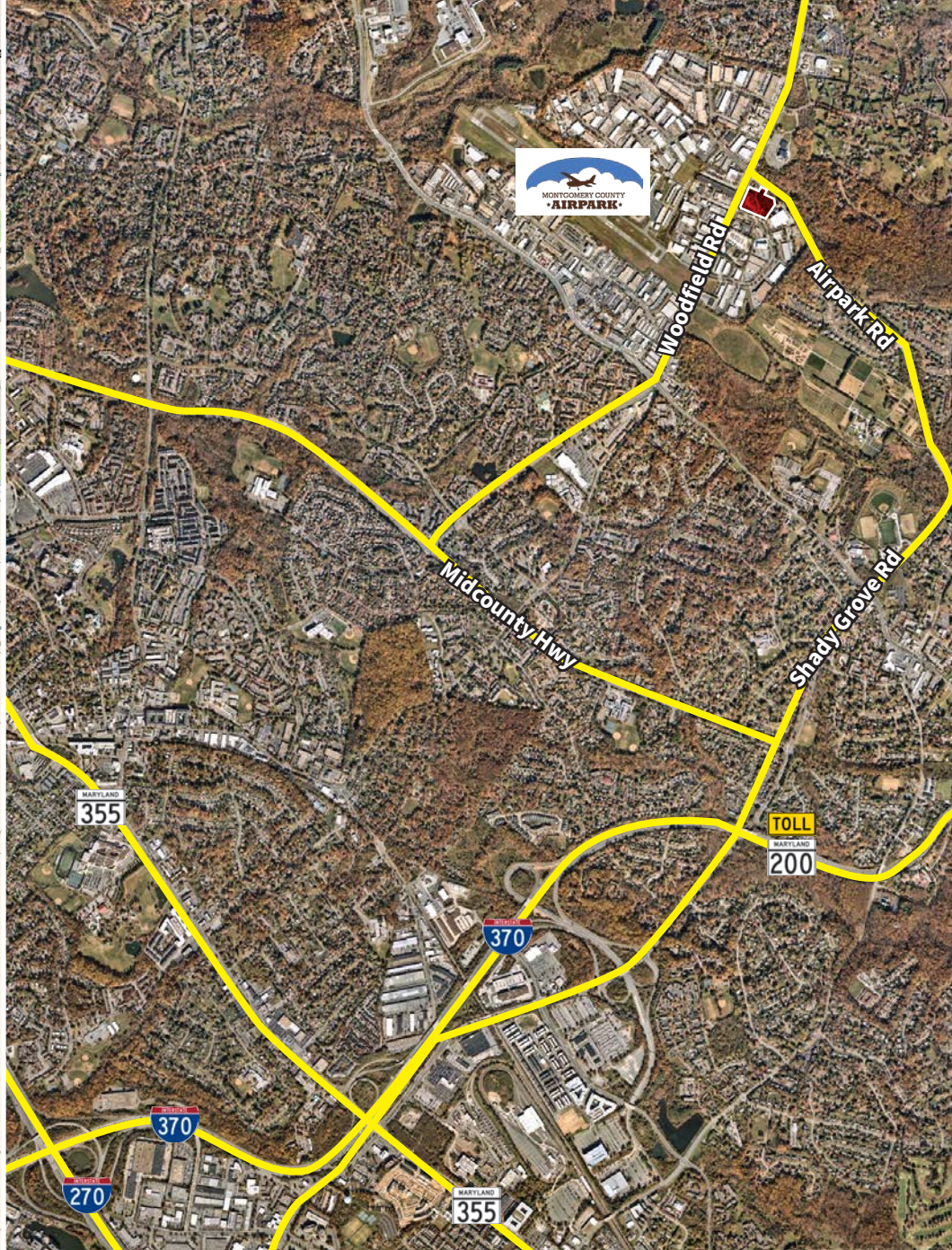
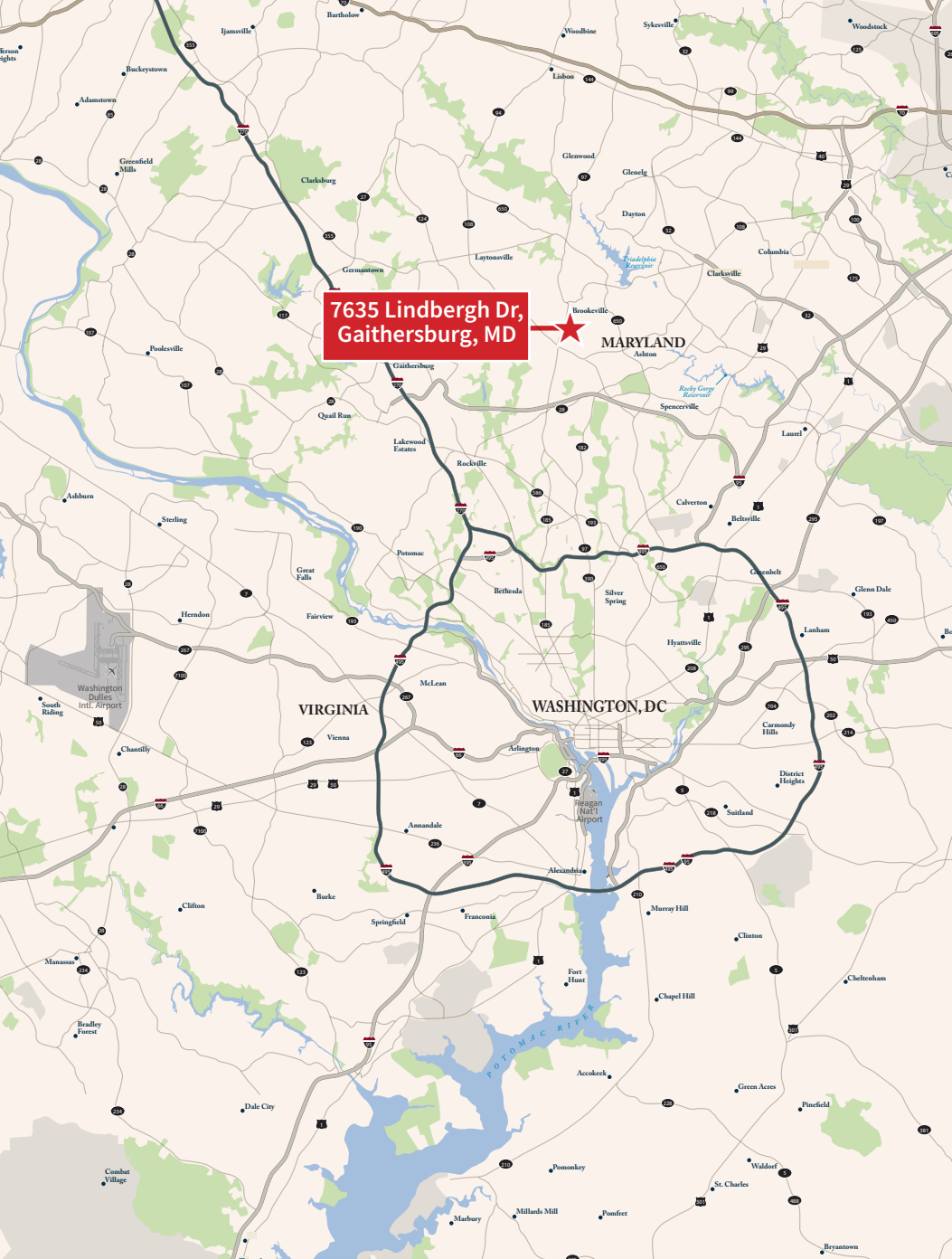
- Total of 2.08 usable acres divisible
 - Parcel A (left): 1.55 usable ac
 - Parcel B (right): .53 usable ac
- Access to water, power, sewer
- Delivery condition: crushed gravel/dirt
- Site available for lease ASAP
- Zoning: IL



7635 Lindbergh Dr, Gaithersburg, MD 20879







Although information has been obtained from sources deemed reliable, neither Owner nor JLL makes any guarantees, warranties or representations, express or implied, as to the completeness or accuracy as to the information contained herein. Any projections, opinions, assumptions or estimates used are for example only. There may be differences between projected and actual results, and those differences may be material. The Property may be withdrawn without notice. Neither Owner nor JLL accepts any liability for any loss or damage suffered by any party resulting from reliance on this information. If the recipient of this information has signed a confidentiality agreement regarding this matter, this information is subject to the terms of that agreement. ©2021. Jones Lang LaSalle IP, Inc. All rights reserved.



John Dettliff
703.485.8831
john.dettliff@jll.com

Sam Haas
443.878.3499
sam.haas@jll.com