



LEE & ASSOCIATES
COMMERCIAL REAL ESTATE SERVICES



INDUSTRIAL CONDOMINIUM FOR SALE

27935 SMYTH DR.,
VALENCIA, CA 91355

[Click Here for Video](#) 

BRETT SAUNDERS
Principal
818.581.7061
bsaunders@lee-re.com
License ID #01991011

FRANK TESORO
Associate
818.444.4930
ftesoro@lee-re.com
License ID #01920803

THE PROPERTY

27935 Smyth Drive, Valencia, CA 91355

\$3,200,000
Listing Price



10,587
Square Footage



±\$302
Price/SF



2001
Year Built



2 / 1,000
Parking Stalls/SF



±\$500
Associate Fee



400 AMP
Power



1
Grade Loading Door

HIGHLIGHTS

- ✓ Close Proximity to 5 Freeway & Valencia Country Club
- ✓ Owner/User Opportunity
- ✓ 21' Warehouse Clearance
- ✓ Industrial Zoned



SUBJECT
 27935 Smyth Dr
 Valencia, CA

Assisted Living & Memory Care
Oakmont
 of Santa Clarita
HOMEWOOD SUITES
 Hilton

Walmart **Office DEPOT** **STARBUCKS**
CHIPOTLE **CHASE** **NUTRI SHOP**
Smart & Final **LA FITNESS**
JACK IN THE BOX **JJ** **THE FLOUR**
menchie's **Habit** **TRAVELER'S**

Carib's **SUBWAY**
Dominos **7 ELEVEN**

EMBASSY SUITES
 by HILTON
COURTYARD
 Marriott
SUBWAY

STARBUCKS **JACK**
DELTA **ELEVEN**
Tommy's

Walgreens **MARSTON'S**
Massage Envy
Panera **FedEx**
Makenna **MOOYAH**

Hilton Garden Inn **Hyatt** **Red Lobster** **Denny's**
Best Western **Capriotti's** **STARBUCKS** **SPRINGHILL SUITES**
Residence Inn **Hyatt's** **IN-N-OUT** **McDonald's**

TARGET **KOHL'S** **macy's** **COLD STONE**
TJ-maxx **BIG 5** **HomeGoods** **TILLYS**
NORDSTROM **Party City** **CVS pharmacy** **SPROUTS** **JCPenney** **STARBUCKS** **Total Wine**
WHOLE FOODS **Olive Garden** **BARNES & NOBLE** **RED ROBIN** **Mimi's Cafe**
cheesecake Factory **Buett** **REGAL CINEMAS** **LAZY DOG** **HYATT REGENCY** **BJS** **crumbl** **COLETTA'S**

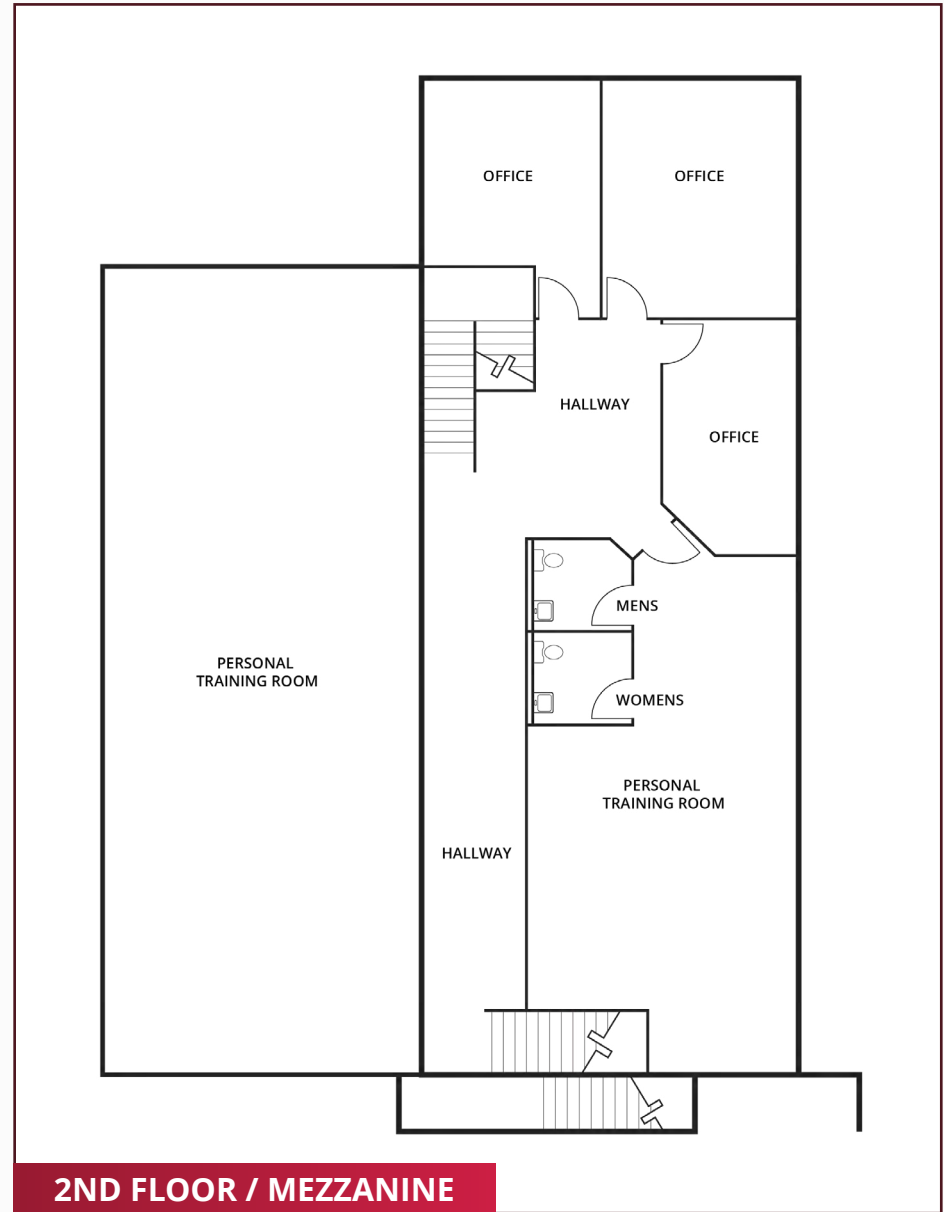
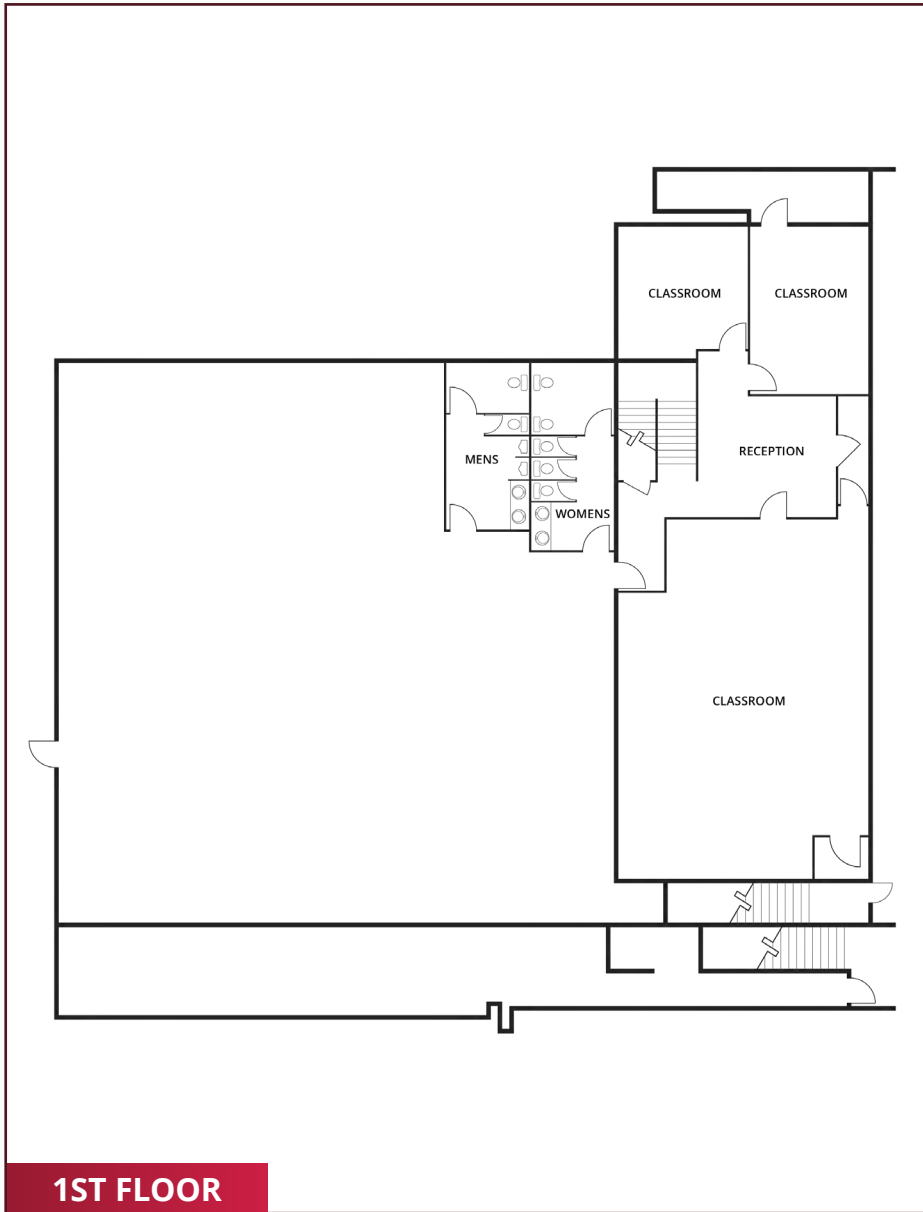
Six Flags
 MAGIC MOUNTAIN

Five Point Valencia
 Redevelopment Project
 21,500 Homes on
 15,000 Acres

Westfield Valencia
 Town Center

Valencia
 Country Club

FLOOR PLANS





No warranty or representation is made to the accuracy of the foregoing information. Terms of sale or lease and availability are subject to change or withdrawal without notice.

For more information,
please contact us.

BRETT SAUNDERS
Principal
818.581.7061
bsaunders@lee-re.com
License ID #01991011

FRANK TESORO
Associate
818.444.4930
ftesoro@lee-re.com
License ID #01920803