

3611 Motor Ave., Los Angeles Office for Lease, Suite 108



Located in one of the nicest buildings in the Motor Ave. area
Minutes from the Santa Monica Freeway
Beautiful and relaxing courtyard views from private offices
New kitchenette and private restroom
Available October 1, 2024

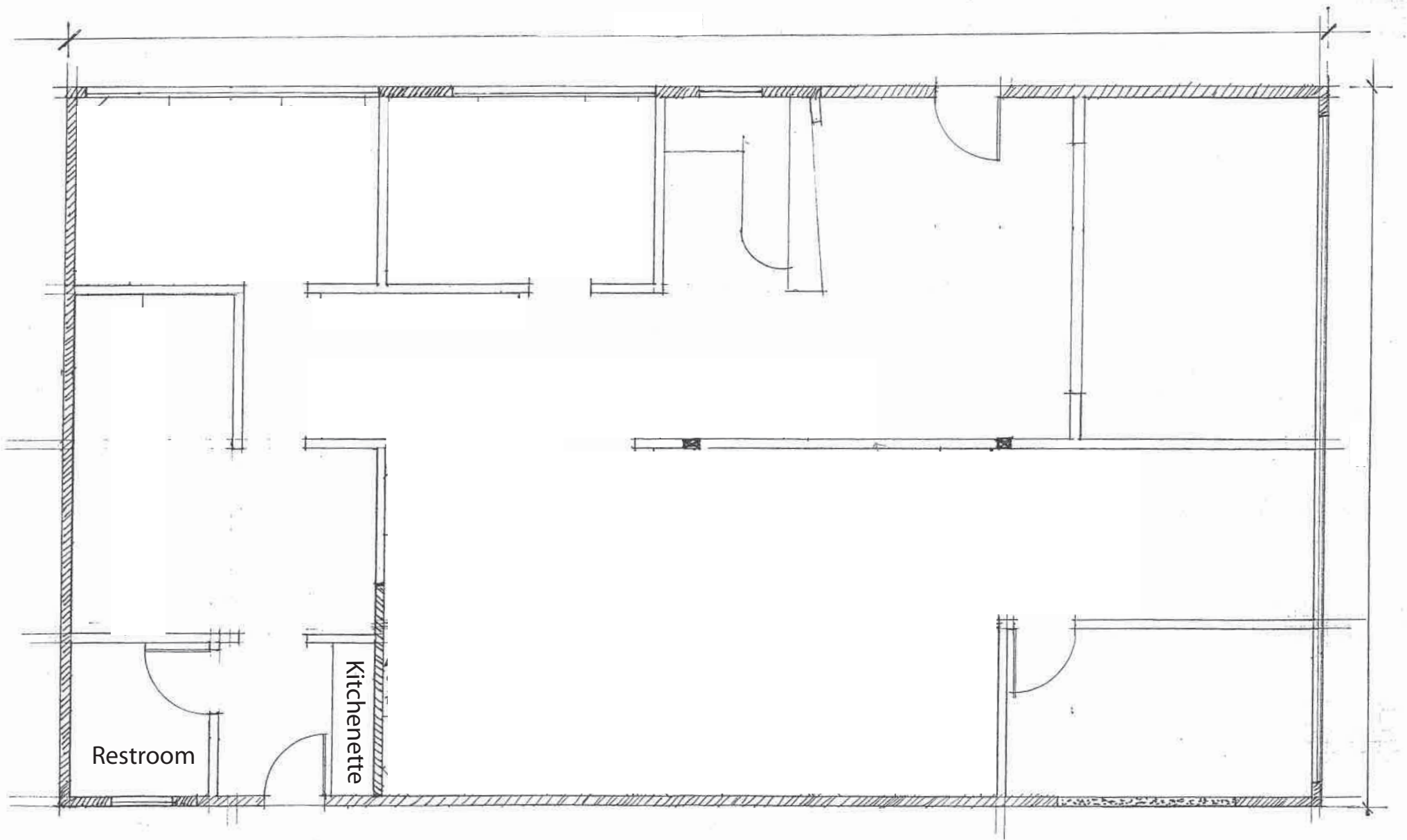
* PREMISES: 2,200 Square Feet
* RENT: \$2.50 SF MG Per Month
* Near Sony Studios

* TERM: 1-2 Years
* PARKING: 4 Spaces / \$80 per mo./per space
* Excellent for Creative Office



CONTACT: Tom Walsmith
Direct: (310) 204-4040
tomwalsmith@gmail.com

CommercialPropertyGroup
10020 National Blvd., Ste. B
Los Angeles, CA 90034



3611 Motor - Suite 108