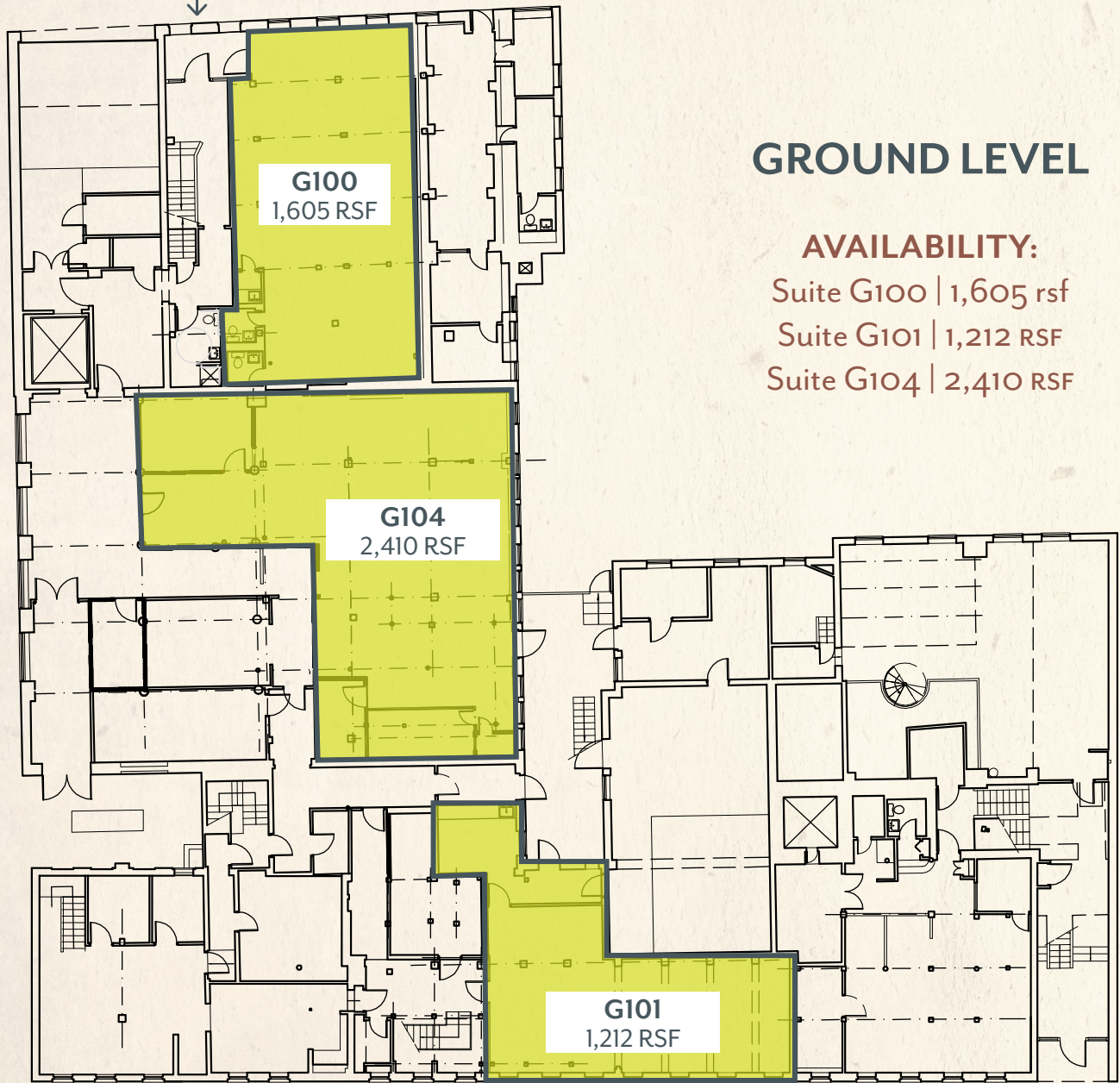


FLOOR PLANS

25 Mt. Auburn
↓



GROUND LEVEL

AVAILABILITY:

Suite G100 | 1,605 rsf

Suite G101 | 1,212 RSF

Suite G104 | 2,410 RSF

OFFICE

ROBERT F. LECLAIR
Managing Director & Partner
617.850.9614
rleclair@bradvisors.com

JUSTIN D. HARLOW
Managing Director
617.850.9613
jharlow@bradvisors.com

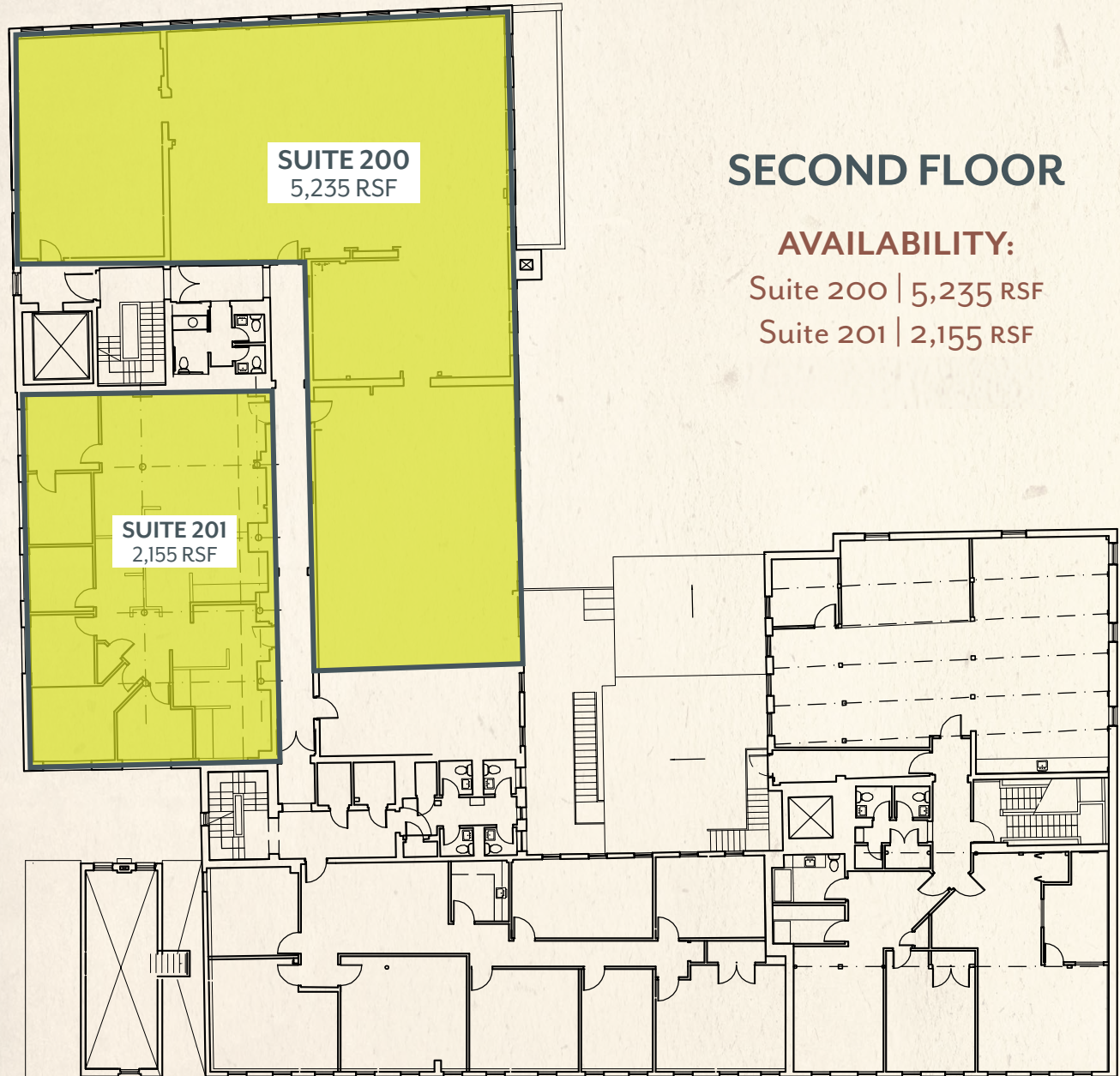
BRIAN APPELMAN
Senior Associate
617.850.9635
bappelman@bradvisors.com



136 Newbury Street | Boston, MA 02116 | 617.375.7900 | BRAdvisors.com

© Copyright Boston Realty Advisors. All rights reserved. The information contained here has been obtained through sources deemed reliable but cannot be guaranteed as to its accuracy. Any information of special interest should be obtained through independent verification.

FLOOR PLANS



SECOND FLOOR

AVAILABILITY:

Suite 200 | 5,235 RSF

Suite 201 | 2,155 RSF

OFFICE

ROBERT F. LECLAIR
Managing Director & Partner
617.850.9614
rleclair@bradvisors.com

JUSTIN D. HARLOW
Managing Director
617.850.9613
jharlow@bradvisors.com

BRIAN APPELMAN
Senior Associate
617.850.9635
bappelman@bradvisors.com



136 Newbury Street | Boston, MA 02116 | 617.375.7900 | BRAdvisors.com

© Copyright Boston Realty Advisors. All rights reserved. The information contained here has been obtained through sources deemed reliable but cannot be guaranteed as to its accuracy. Any information of special interest should be obtained through independent verification.

FLOOR PLANS

THIRD FLOOR

AVAILABILITY:

Suites 308/310/30 | 6,925 RSF

FOURTH FLOOR

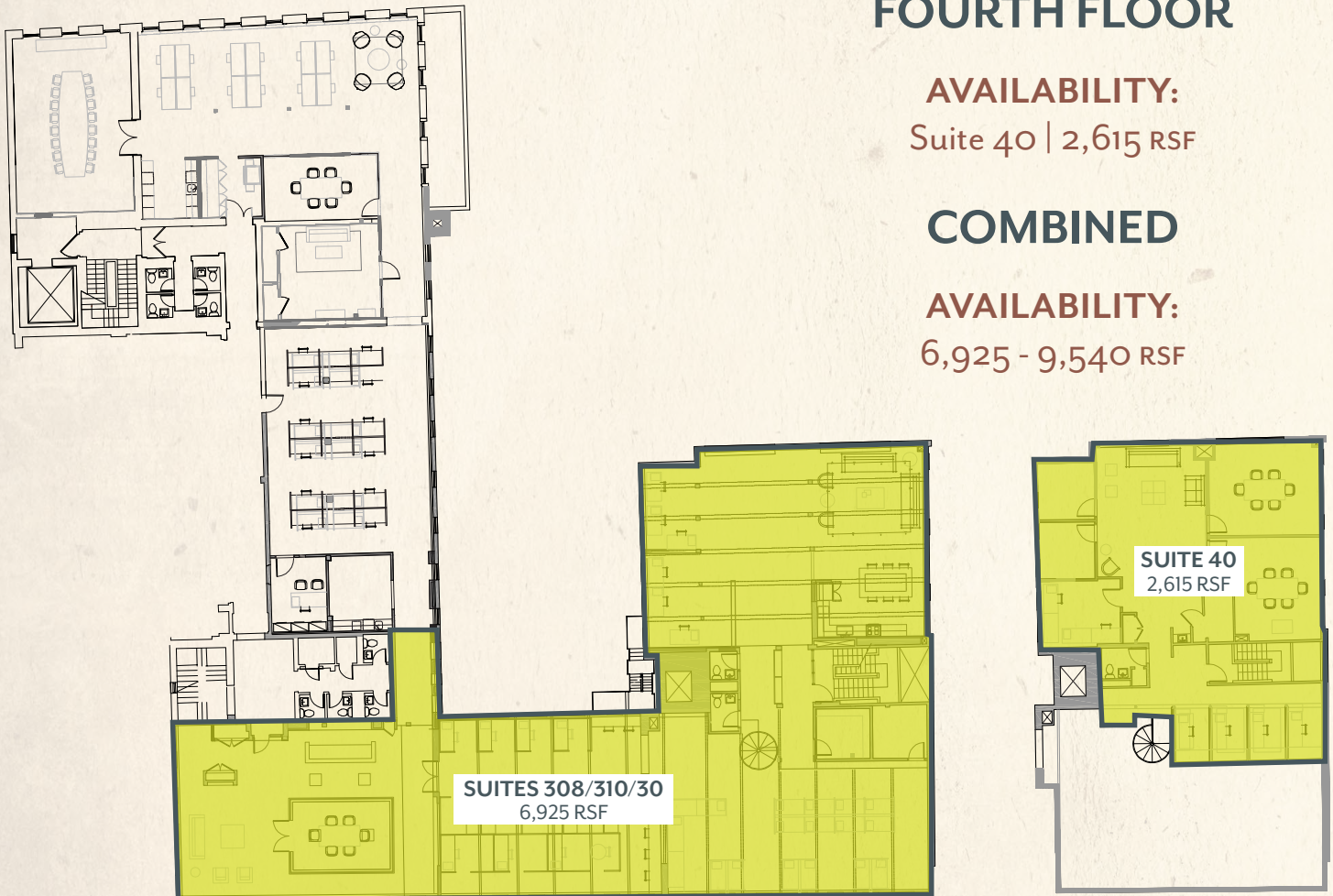
AVAILABILITY:

Suite 40 | 2,615 RSF

COMBINED

AVAILABILITY:

6,925 - 9,540 RSF



OFFICE

ROBERT F. LECLAIR
Managing Director & Partner
617.850.9614
rleclair@bradvisors.com

JUSTIN D. HARLOW
Managing Director
617.850.9613
jharlow@bradvisors.com

BRIAN APPELMAN
Senior Associate
617.850.9635
bappelman@bradvisors.com



136 Newbury Street | Boston, MA 02116 | 617.375.7900 | BRAdvisors.com

© Copyright Boston Realty Advisors. All rights reserved. The information contained here has been obtained through sources deemed reliable but cannot be guaranteed as to its accuracy. Any information of special interest should be obtained through independent verification.