



CLARION PARTNERS

For Lease

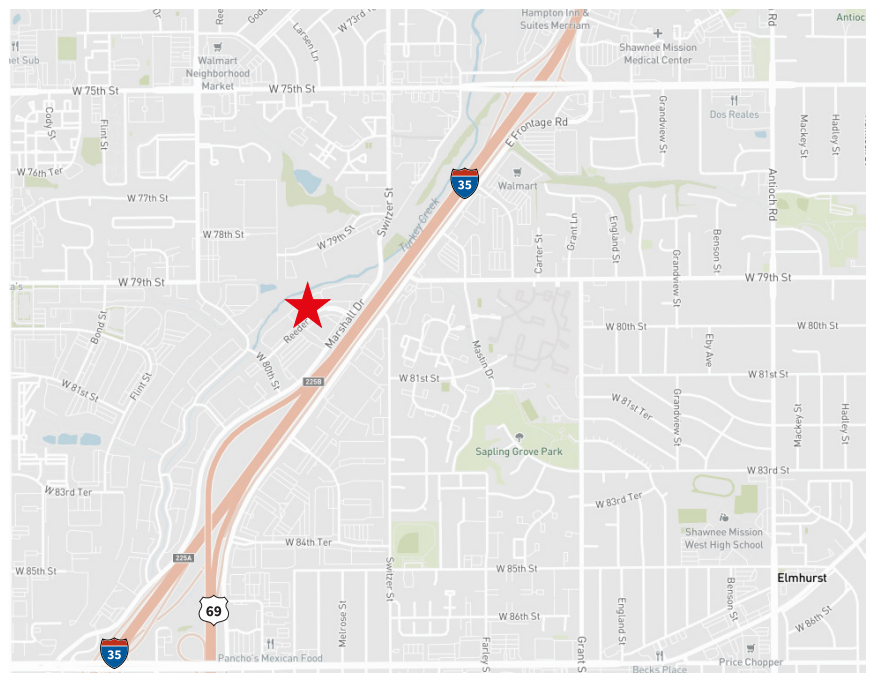
Westbrook II  
8024 Reeder Street  
Lenexa, KS 66214

±3,465 Square Feet Available



## BUILDING HIGHLIGHTS

- ±3,465 s.f. office
- Base Rent - TBQ
- CAM - ±\$3.17/SF
- 14' clear height
- One (1) dock-high doors
- Easy access to I-35 at 75th Street & 87th Street exchanges
- Available January 1, 2025



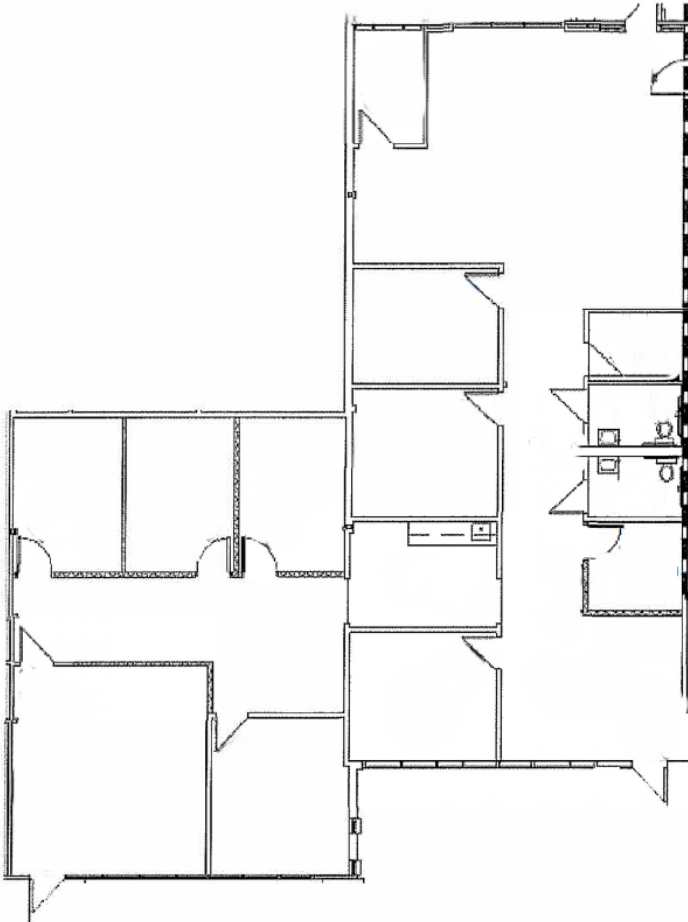
This information contained herein was obtained from sources deemed reliable and is believed to be true. It has not been verified and as such, cannot be warranted nor form any part of any future contract.



# CLARION PARTNERS

## Westbrook II

±3,465 s.f. office



## CLARION PARTNERS

A Franklin Templeton Company

[www.clarionpartners.com](http://www.clarionpartners.com)

For more information on this opportunity, please contact.



Kevin Wilkerson, SIOR  
913.469.4601  
[kevin.wilkerson@jll.com](mailto:kevin.wilkerson@jll.com)

Phil Algrim, SIOR  
913.469.4605  
[phil.algrim@jll.com](mailto:phil.algrim@jll.com)

Ben Cadenas  
913.469.4609  
[ben.cadenas@jll.com](mailto:ben.cadenas@jll.com)