

GRAND PWKY



HIGHWAY 290 AND KERMIER ROAD | HOCKLEY, TEXAS 77447

HWY 290

KERMIER ROAD



LAND AVAILABLE FOR SALE, BTS OR DESIGN BUILD

68.26 AC | +/- 909,352 SF



CBRE

PROPOSED BUILDING OVERVIEW

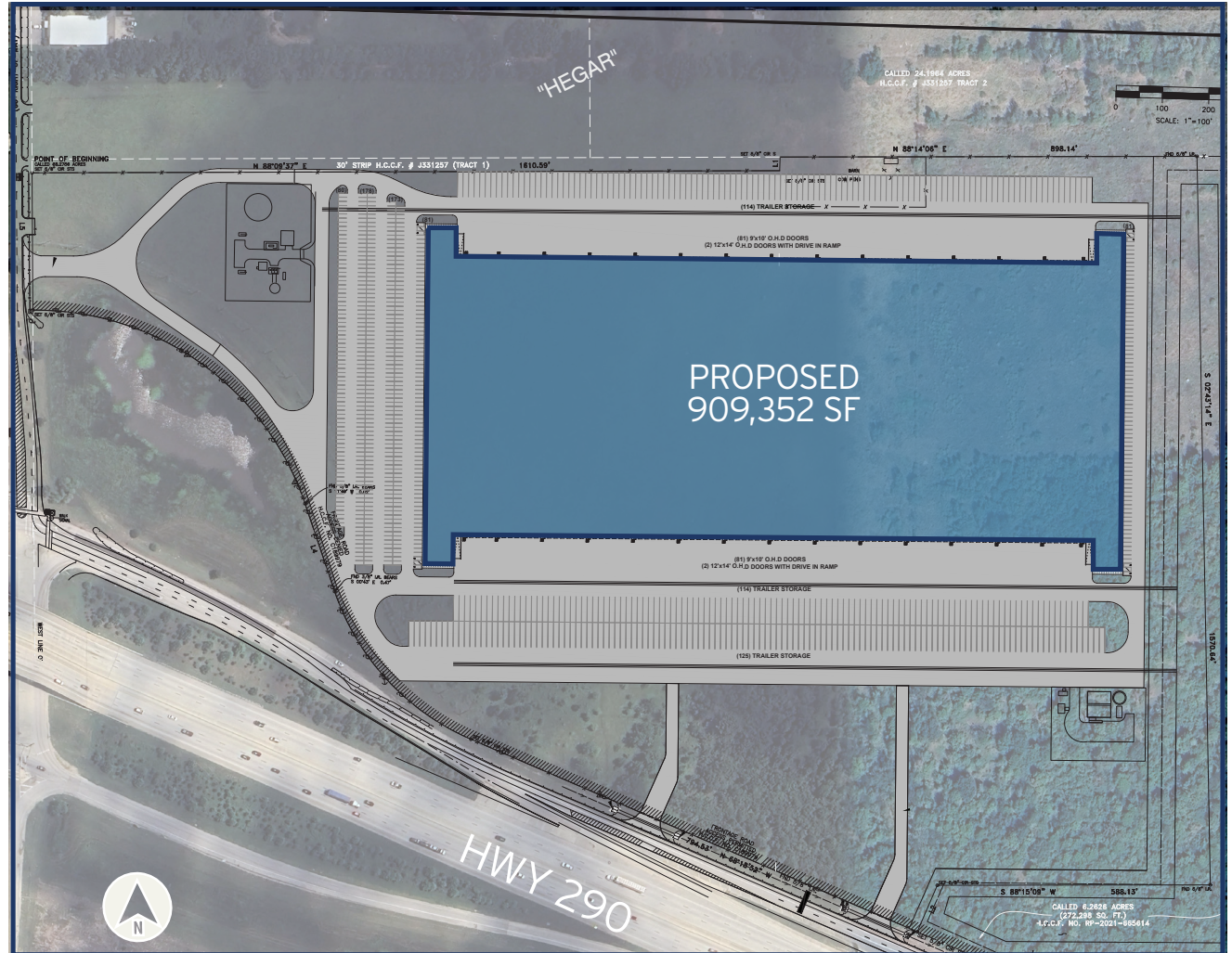
909,352 SF

HIGHLIGHTS

909,352 SF Building Size	40' Clear Height
162 Dock-High Doors	353 Trailer Parks
4 Drive-In Ramps	593 Car Parks
68.26 Acres Site Size	

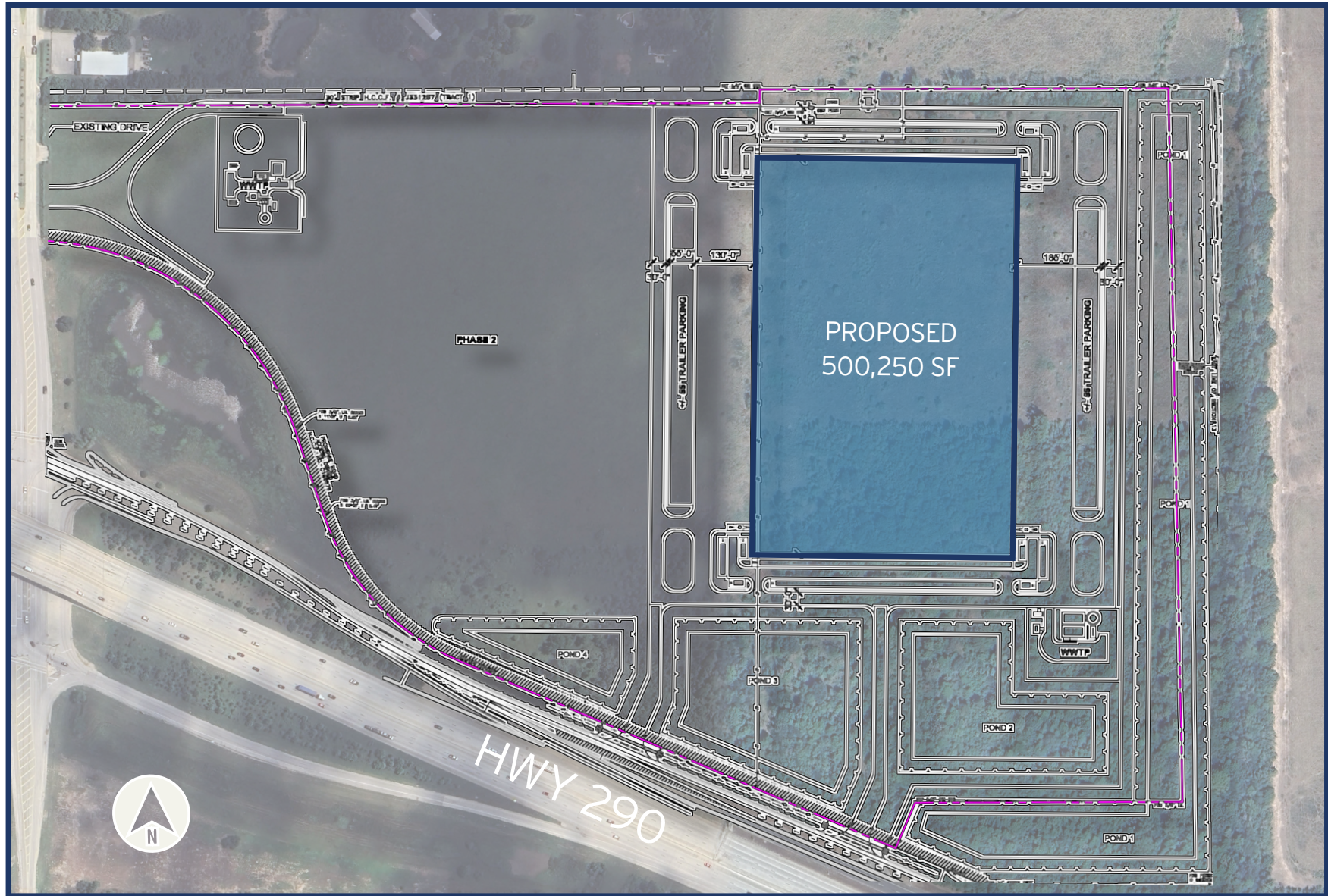
290 Grand Logistics contains 68.26 Acres available for sale, build-to-suit, or design build up to 909,352 SF and expandable to 1M SF.

Situated directly on Highway 290, this site offers seamless accessibility and major freeway frontage. In addition to highway exposure, 290 Grand Logistics is user friendly and is located in Houston's desired Northwest Submarket.



ADDITIONAL LAYOUT OPTION

500,250 SF



DRIVE TIME MAP

290 GRAND
LOGISTICS



#	LOCATION	DISTANCE
1	Downtown Houston	45 Miles
2	IAH Airport	45 Miles
3	Hobby Airport	49 Miles
4	Barbours Cut Terminal	66 Miles
5	Bayport Terminal	69 Miles
	Austin, TX	124 Miles
	San Antonio, TX	186 Miles
	Dallas, TX	222 Miles

20 MILE RADIUS

1,207,187
2024 Population

403,881
2024 Households

639,958
2024 Labor Force

+53,900
Vehicles Per Day (Hwy 290)



HIGHWAY 290 AND KERMIER ROAD | HOCKLEY, TEXAS 77447

DAIKIN

KERMIER ROAD

68.26 ACRES



JASON DILLEE
Executive Vice President
+1 713 577 1796
Jason.Dilllee@cbre.com

JOSEPH SMITH
Senior Vice President
+1 713 577 1847
Joseph.Smith@cbre.com

GREG HOLMES
Senior Associate
+1 713 577 1902
Gregory.Holmes@cbre.com

CBRE

© 2024 CBRE, Inc. All rights reserved. This information has been obtained from sources believed reliable, but has not been verified for accuracy or completeness. You should conduct a careful, independent investigation of the property and verify all information. Any reliance on this information is solely at your own risk. CBRE and the CBRE logo are service marks of CBRE, Inc. All other marks displayed on this document are the property of their respective owners. Photos herein are the property of their respective owners. Use of these images without the express written consent of the owner is prohibited.