



66,880 SF
AVAILABLE

WADSWORTH BUSINESS PARK

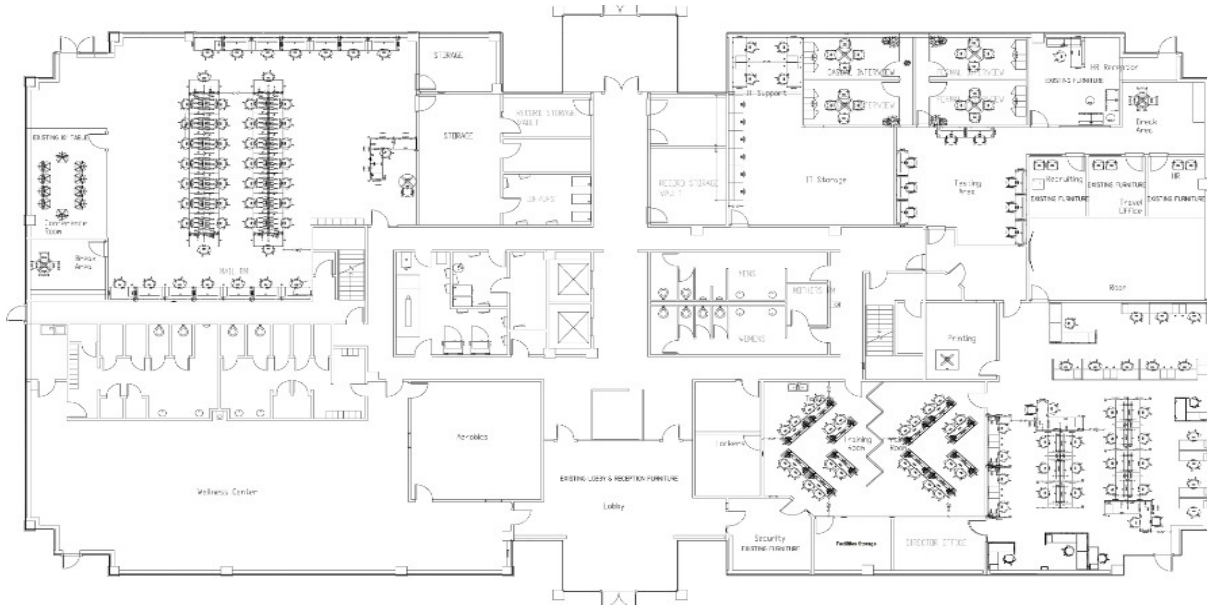
BUILDING B

66 WADSWORTH PARK DRIVE
DRAPER, UTAH 84020

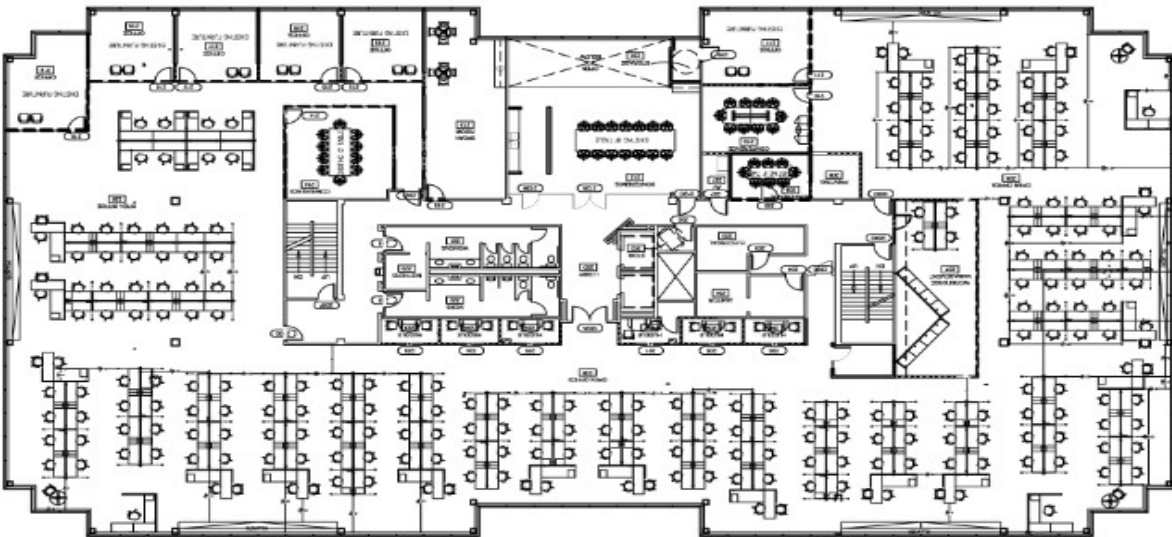


CUSHMAN &
WAKEFIELD

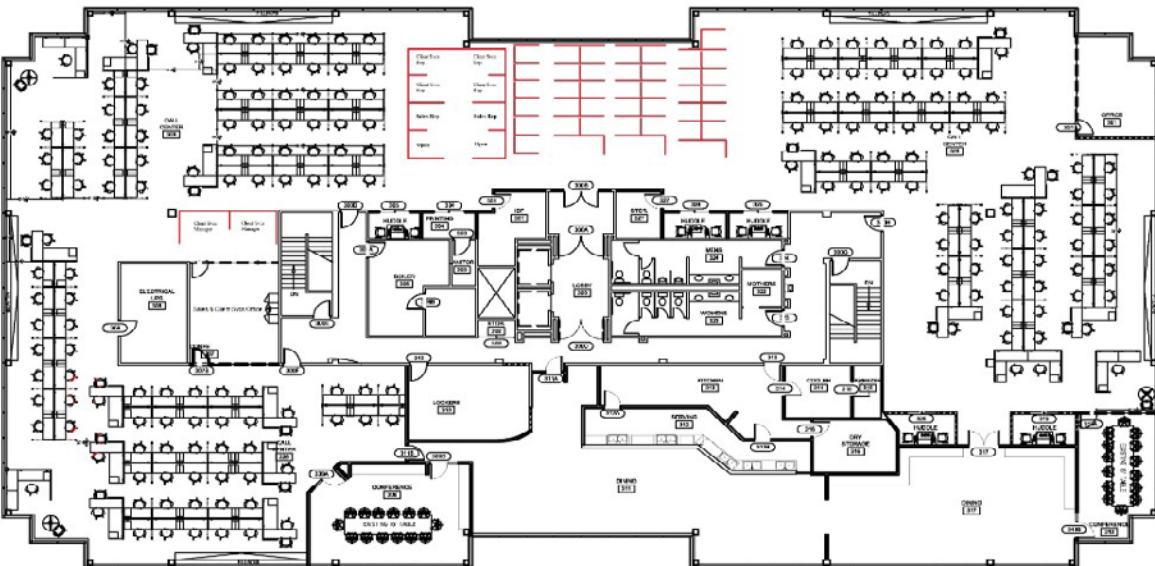
First Floor



Second Floor



Third Floor



PROPERTY HIGHLIGHTS

\$17.50

PSF FULL SERVICE

5/1,000

PARKING RATIO

66,880 SF

AVAILABLE

LOCATION

GREAT SOUTH VALLEY LOCATION
NEAR MANY AMENITIES





**EXCELLENT
FREEWAY
VISIBILITY**

Justin D. Bailey
 Director
 Tenant Advisory Group
 Direct: +1 801 303 5493
 Justin.Bailey@cushwake.com

170 South Main Street, Suite 1600
 Salt Lake City, UT 84101
 Main +1 801 322 2000
 Fax +1 801 322 2040
 cushmanwakefield.com

Cushman & Wakefield Copyright 2020. No warranty or representation, express or implied, is made to the accuracy or completeness of the information contained herein, and same is submitted subject to errors, omissions, change of price, rental or other conditions, withdrawal without notice, and to any special listing conditions imposed by the property owner(s). As applicable, we make no representation as to the condition of the property (or properties) in question. (path: G:\SL\ Shared\Apps\Gigas\1 - Projects\Bailey_J\1 - Flyers\66Wadsworth_Draper)

