

MEDICAL OFFICE

FOR SALE OR LEASE
429 N. Linden St., Belle Plaine, KS



SALE PRICE
\$120,000.00

LEASE RATE
\$1,200.00/MO

SITE SIZE
4,145 SF

BUILDING SIZE
2,894 SF

YEAR BUILT
1950

ZONING
GENERAL OFFICE

TAXES
GENERALS: \$3,071.66 | SPECIALS: \$0.00

PROPERTY HIGHLIGHTS

- Excellent satellite office opportunity.
- Remaining dental equipment included.
- Potential redevelopment for other uses.
- Large reception, 3 private offices, kitchen, 2 laboratories, 7 exam rooms and 4 bathrooms.
- All exam rooms include built-in sinks.
- Building also includes a basement.
- Paved parking lot.

DEMOGRAPHICS



POPULATION

1 MILE 2,112

3 MILES 3,082

5 MILES 20,555



AVG. HH INCOME

\$79,147

\$84,097

\$87,383



MEDIAN AGE

37.6

39.1

38.5



Offered exclusively by: **Ben Suellentrop**
316-292-3911 | bsuellentrop@weigand.com

Morrie Sheets
316-292-3972 | mshheets@weigand.com

MEDICAL OFFICE

FOR SALE OR LEASE

429 N. Linden St., Belle Plaine, KS

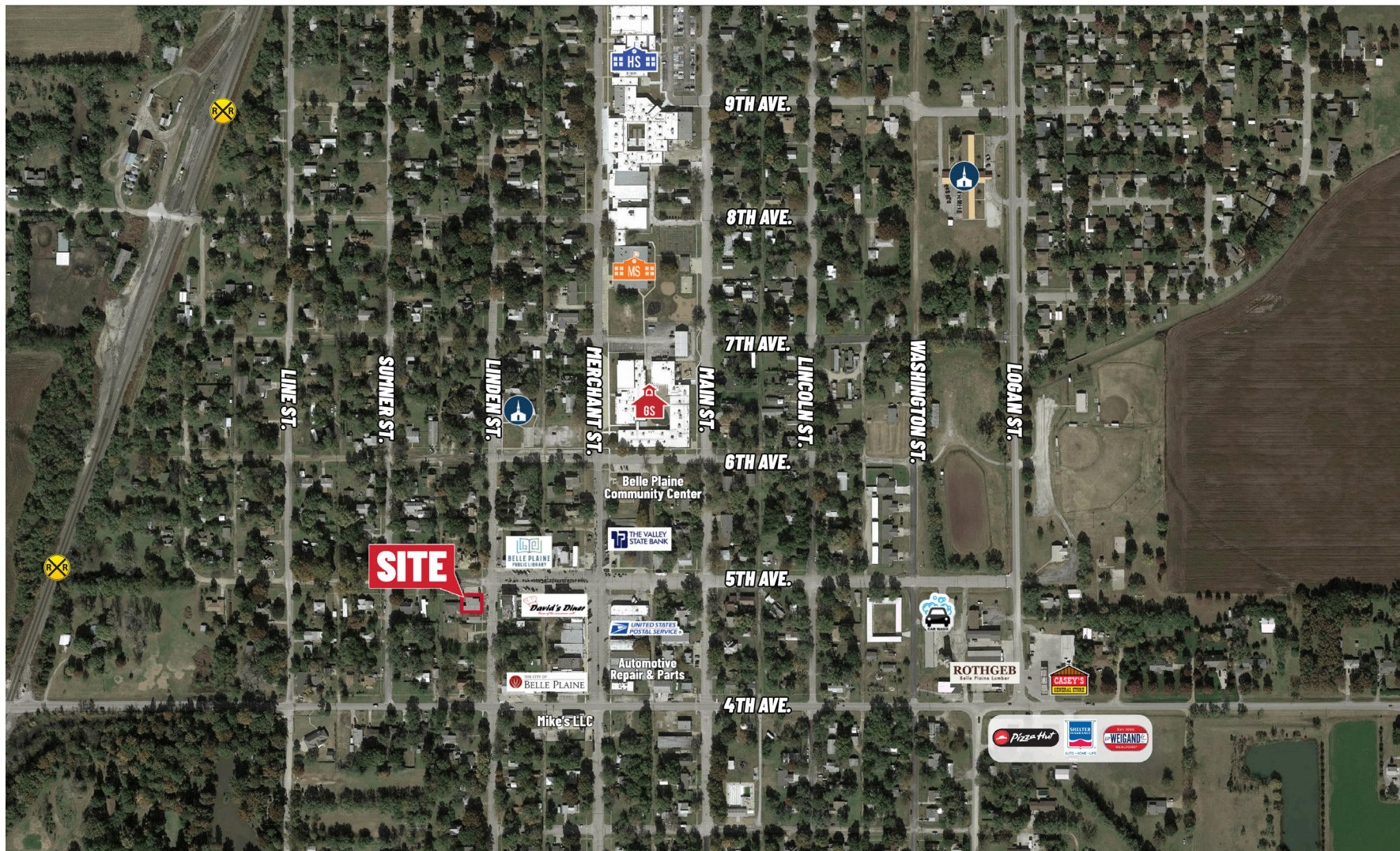


Offered exclusively by: **Ben Suellentrop**
316-292-3911 | bsuellentrop@weigand.com

Morrie Sheets
316-292-3972 | msheets@weigand.com

MEDICAL OFFICE FOR SALE OR LEASE

429 N. Linden St., Belle Plaine, KS



All information furnished regarding property for sale, lease, exchange or financing is from sources deemed reliable but no guarantee is made or responsibility assumed as to its accuracy or completeness and you are advised to make your own analysis and verification. Broker hereby notifies prospective buyer/lessee that (a) Broker will be acting as an agent of seller/lessor with the duty to represent seller/lessor's interest; (b) Broker will not be the agent of buyer/lessee; and (c) Information given to Broker will be disclosed to seller/lessor.



Offered exclusively by: **Ben Suellentrop**
316-292-3911 | bsuellentrop@weigand.com

Morrie Sheets
316-292-3972 | mshheets@weigand.com