

AVAILABLE

Turner Road Business Center

219 - 301 Turner Road, North Chesterfield, VA 23225



Exclusive Agents:

WILSON FLOHR, SIOR
(804) 521-1458
wilson@porterinc.com

BYRON HOLMES, CCIM, SIOR
(804) 521-1448
byron@porterinc.com

4801 Radford Avenue | P.O. Box 6482
Richmond, VA 23230
www.porterinc.com
804-353-7994

PORTER
R E A L T Y



FLEX UNITS AVAILABLE

- Unit 229-231: 4,500 SF
- Unit 239: 2,250 SF
- Unit 247: 2,250 SF
- Opportunity Zone + Technology Zone Location
- Zoned C-4: Retail, Office, Flex Uses Allowed
- Roll-Up Doors 9' x 8'
- Curbside Loading (Drive-In Ramps Available)
- 15' - 17' Ceilings
- 208 Volt 3 Phase Electrical Service
- Immediate Access to Chippenham Parkway, Powhite Parkway, & Downtown Richmond
- Located Off Midlothian Turnpike (Rt 60)
- For Lease: \$13.50/SF IG (subject to term)

This information has been prepared by Porter Realty Company, Inc. for marketing purposes only. No representation or warranty, expressed or implied, is made as to the accuracy of the foregoing information. Terms of sale or lease and availability are subject to change or withdrawal without notice.

AVAILABLE SPACES

219 - 301 Turner Road | North Chesterfield, VA 23225



LEASE INFORMATION

Lease Type: Modified Gross

Lease Term: Negotiable

Total Space: 2,250 - Up to 4,500 SF

Lease Rate: \$13.50/SF MG

AVAILABLE SPACES

- Building 2: 2 Units Available - 2,250-4,500 SF (Units 229-231)
- Building 4: 2 Units Available - each unit is 2,250 SF (Units 239, 247)

Wilson Flohr, SIOR
(804) 521-1458
wilson@porterinc.com

Byron Holmes, CCIM, SIOR
(804) 521-1448
byron@porterinc.com

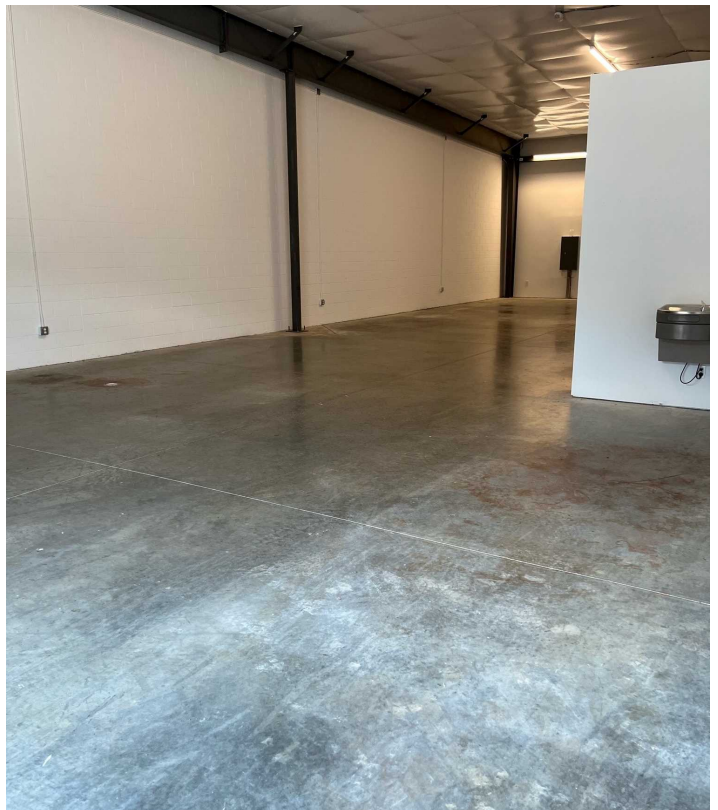


Porter Realty Company, Inc. | 4801 Radford Avenue | P.O. Box 6482 | Richmond, VA 23230 | www.porterinc.com

This information has been prepared by Porter Realty Company, Inc. for marketing purposes only. No representation or warranty, expressed or implied, is made as to the accuracy of the foregoing information. Terms of sale or lease and availability are subject to change or withdrawal without notice.

PROPERTY PHOTOS

219 - 301 Turner Road | North Chesterfield, VA 23225



Wilson Flohr, SIOR
(804) 521-1458
wilson@porterinc.com

Byron Holmes, CCIM, SIOR
(804) 521-1448
byron@porterinc.com

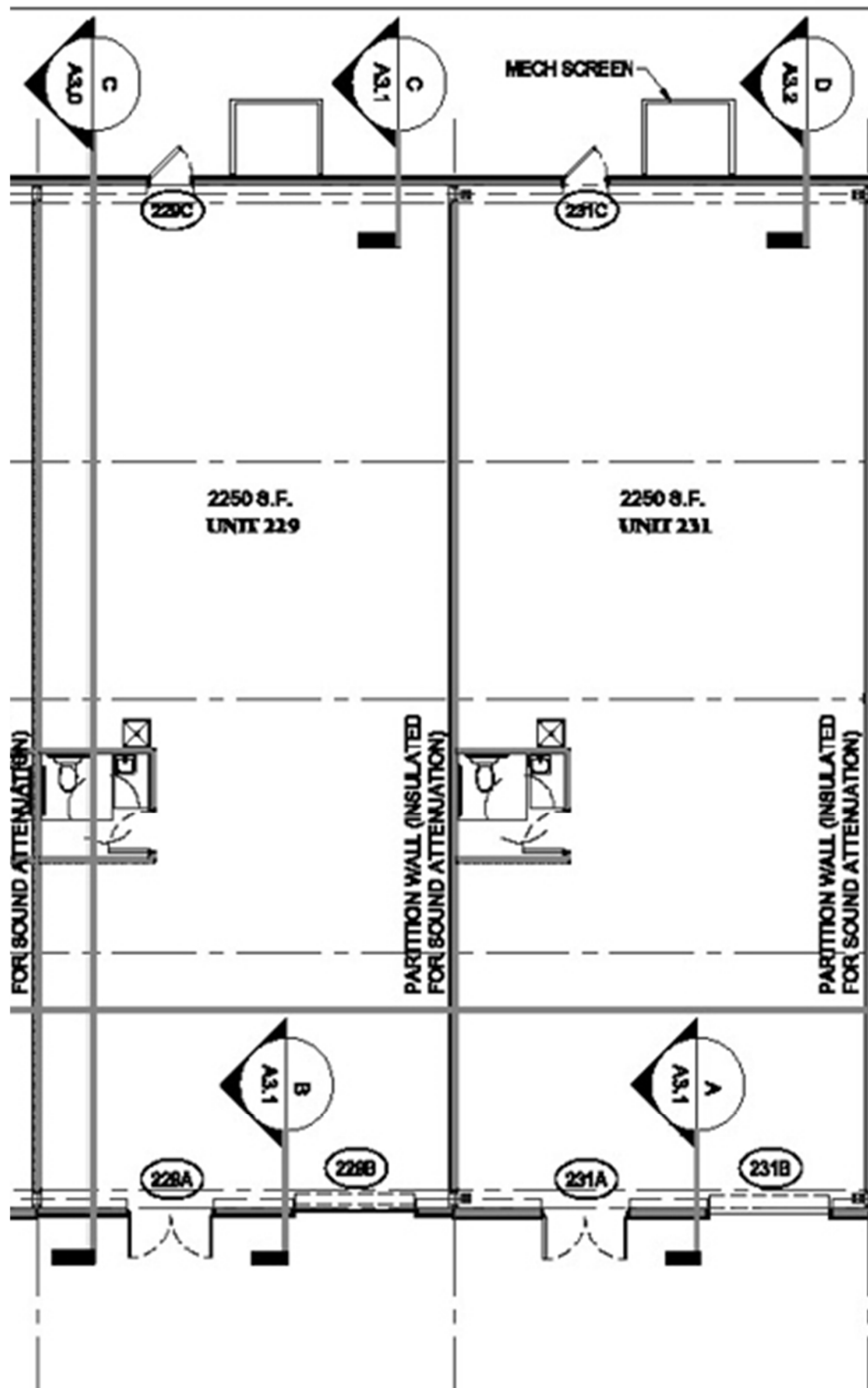
Porter Realty Company, Inc. | 4801 Radford Avenue | P.O. Box 6482 | Richmond, VA 23230 | www.porterinc.com

This information has been prepared by Porter Realty Company, Inc. for marketing purposes only. No representation or warranty, expressed or implied, is made as to the accuracy of the foregoing information. Terms of sale or lease and availability are subject to change or withdrawal without notice.



FLOOR PLAN - UNITS 229-231

219 - 301 Turner Road | North Chesterfield, VA 23225



Wilson Flohr, SIOR
(804) 521-1458
wilson@porterinc.com

Byron Holmes, CCIM, SIOR
(804) 521-1448
byron@porterinc.com

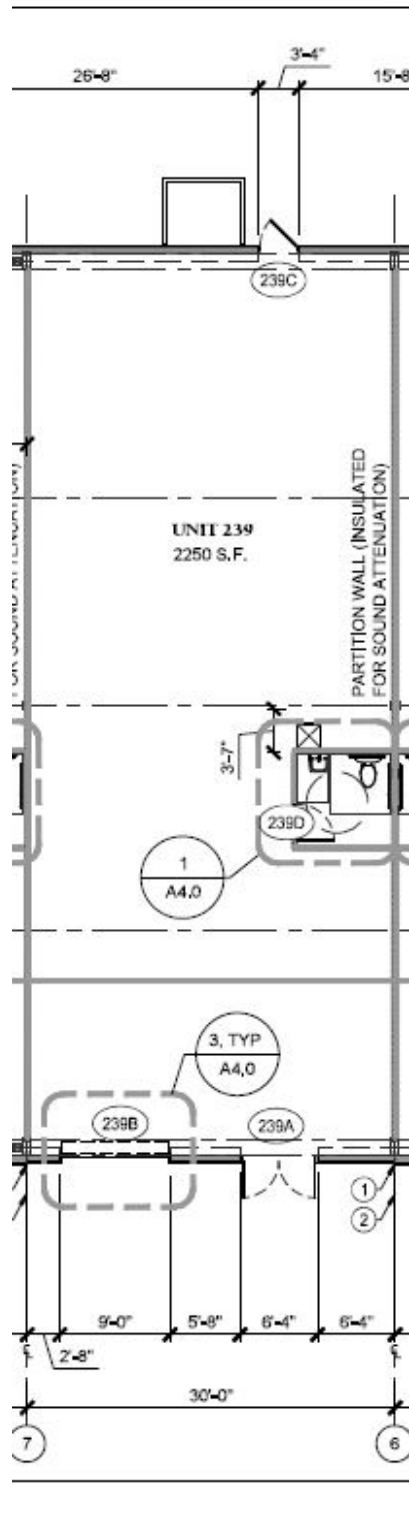


Porter Realty Company, Inc. | 4801 Radford Avenue | P.O. Box 6482 | Richmond, VA 23230 | www.porterinc.com

This information has been prepared by Porter Realty Company, Inc. for marketing purposes only. No representation or warranty, expressed or implied, is made as to the accuracy of the foregoing information. Terms of sale or lease and availability are subject to change or withdrawal without notice.

FLOOR PLAN - UNIT 239

219 - 301 Turner Road | North Chesterfield, VA 23225



Wilson Flohr, SIOR
(804) 521-1458
wilson@porterinc.com

Byron Holmes, CCIM, SIOR
(804) 521-1448
byron@porterinc.com

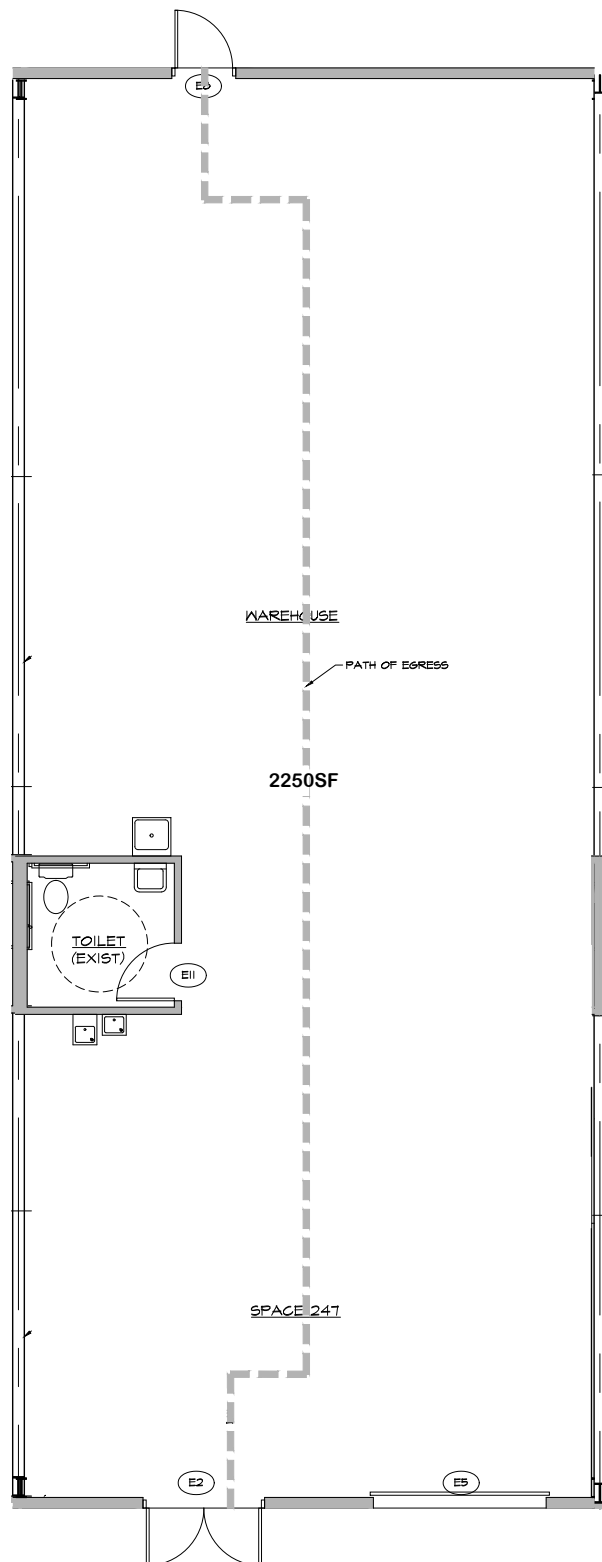


Porter Realty Company, Inc. | 4801 Radford Avenue | P.O. Box 6482 | Richmond, VA 23230 | www.porterinc.com

This information has been prepared by Porter Realty Company, Inc. for marketing purposes only. No representation or warranty, expressed or implied, is made as to the accuracy of the foregoing information. Terms of sale or lease and availability are subject to change or withdrawal without notice.

FLOOR PLAN - UNIT 247

219 - 301 Turner Road | North Chesterfield, VA 23225



Wilson Flohr, SIOR
(804) 521-1458
wilson@porterinc.com

Byron Holmes, CCIM, SIOR
(804) 521-1448
byron@porterinc.com

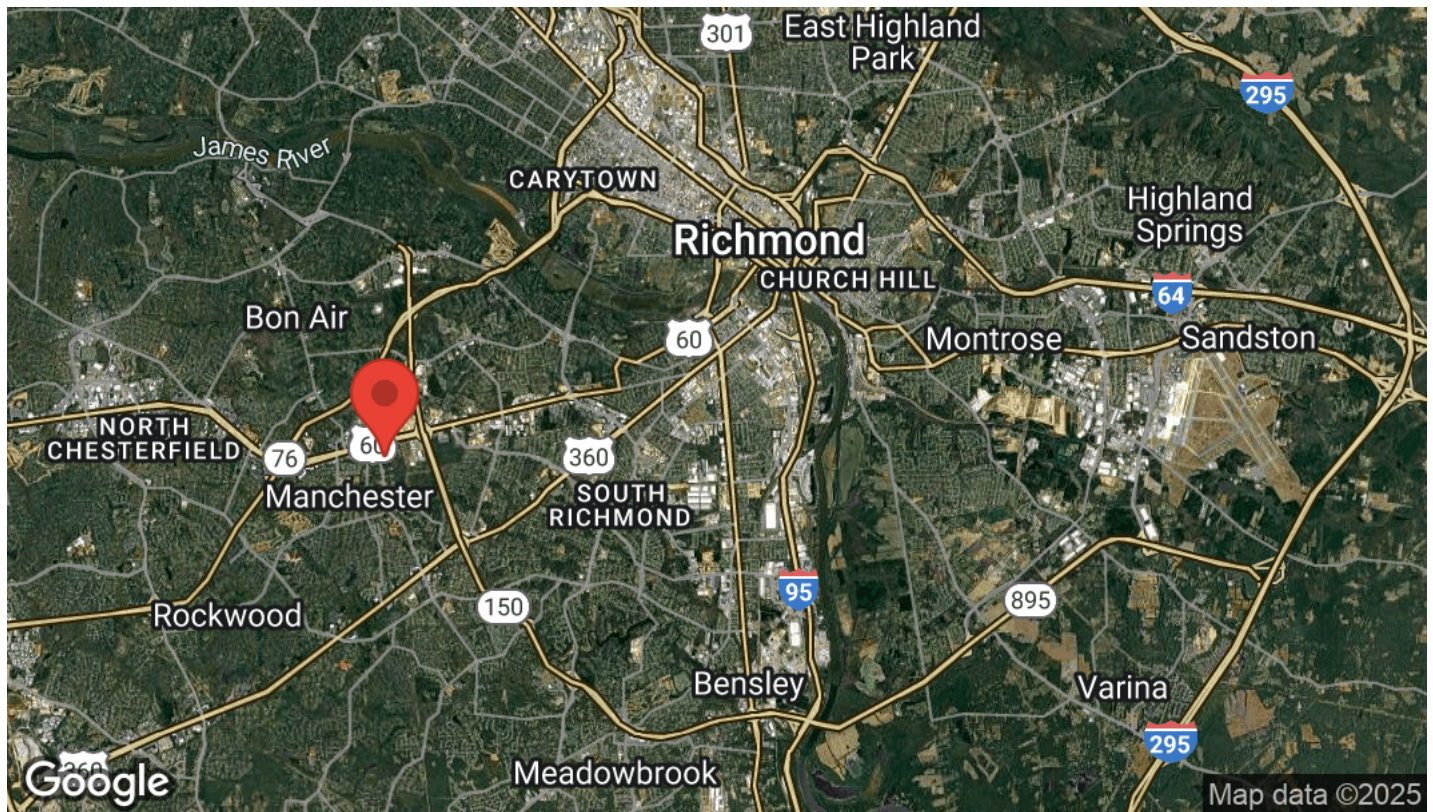
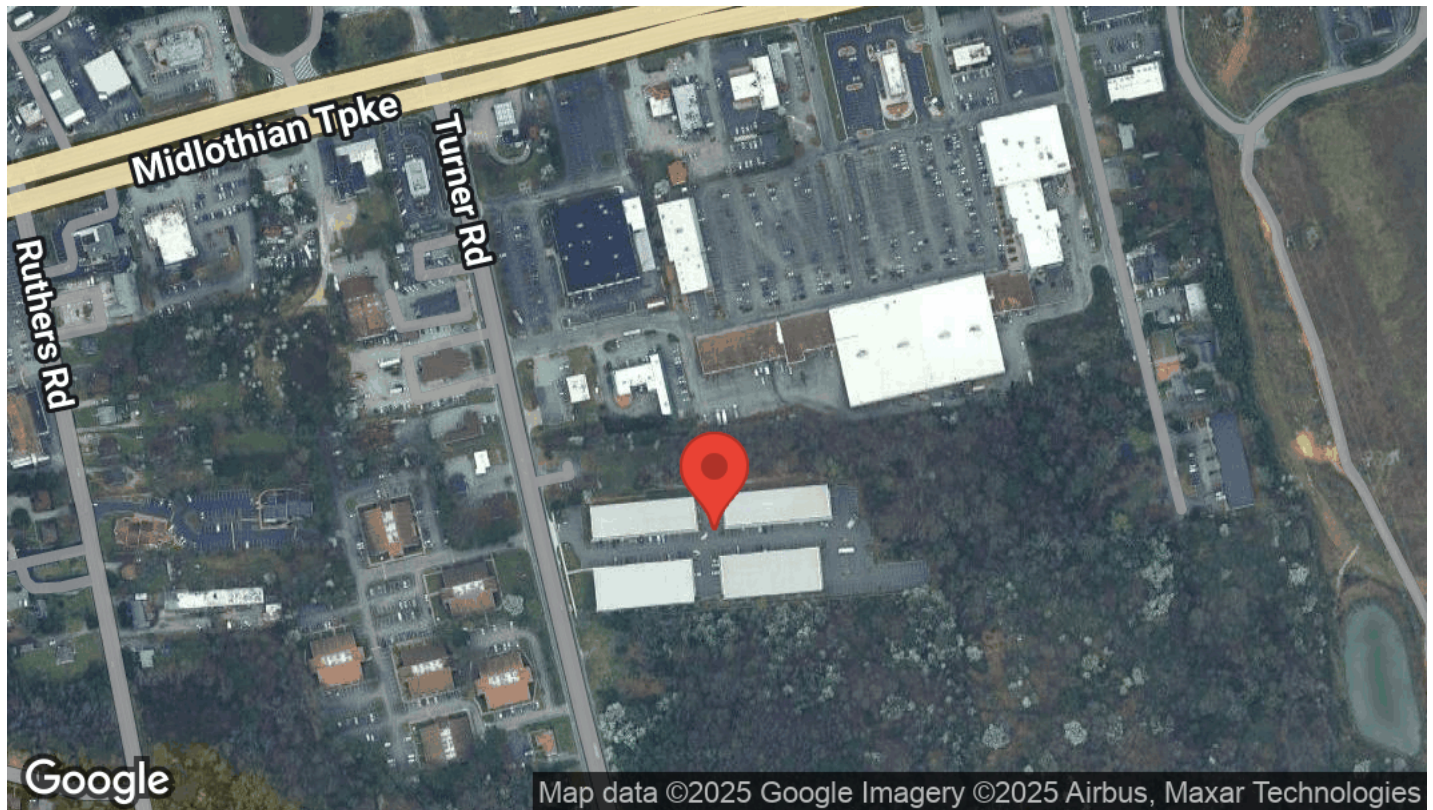


Porter Realty Company, Inc. | 4801 Radford Avenue | P.O. Box 6482 | Richmond, VA 23230 | www.porterinc.com

This information has been prepared by Porter Realty Company, Inc. for marketing purposes only. No representation or warranty, expressed or implied, is made as to the accuracy of the foregoing information. Terms of sale or lease and availability are subject to change or withdrawal without notice.

LOCATION MAPS

219 - 301 Turner Road | North Chesterfield, VA 23225



Wilson Flohr, SIOR
(804) 521-1458
wilson@porterinc.com

Byron Holmes, CCIM, SIOR
(804) 521-1448
byron@porterinc.com



Porter Realty Company, Inc. | 4801 Radford Avenue | P.O. Box 6482 | Richmond, VA 23230 | www.porterinc.com

This information has been prepared by Porter Realty Company, Inc. for marketing purposes only. No representation or warranty, expressed or implied, is made as to the accuracy of the foregoing information. Terms of sale or lease and availability are subject to change or withdrawal without notice.