

OFFICE FOR LEASE

1462 W USTICK RD. 120

1462 WEST USTICK ROAD, MERIDIAN, ID 83646



FOR LEASE

**KW COMMERCIAL | BOISE**

1065 S. Allante Place  
Boise, ID 83709



Each Office Independently Owned and Operated

*PRESENTED BY:*

**JASON KNORPP, CCIM**

O: (208) 283-8121  
jason@commercialidaho.com  
SP41881, Idaho

We obtained the information above from sources we believe to be reliable. However, we have not verified its accuracy and make no guarantee, warranty or representation about it. It is submitted subject to the possibility of errors, omissions, change of price, rental or other conditions, prior sale, lease or financing, or withdrawal without notice. We include projections, opinions, assumptions or estimates for example only, and they may not represent current or future performance of the property. You and your tax and legal advisors should conduct your own investigation of the property and transaction.

## OFFICE CONDO SUMMARY

1462 W Ustick Rd. 120



<b>Suites Available</b>	Unit 120
<b>Annual Lease Rate:</b>	\$26.75/Sqft Plus NNN
<b>Rentable SF:</b>	1,225
<b>Year Built:</b>	2022
<b>Building Class:</b>	A
<b>Zoning:</b>	C-C: Community Commercial
<b>Annual NNN Estimate</b>	\$4.45/SF
<b>Lease Term:</b>	3-5 Years

### Property Highlights

- 4 private office suites
- Ideal for medical, wellness, salon, or professional use
- Separate entry/reception area
- Restroom, Break room, Storage room
- Strong street frontage & visibility
- Contemporary design with clean, updated finishes
- Functional, flexible layout for multiple business type

### Property Overview

Position your business for success in this modern, high-visibility office building, built in 2022 and designed with functionality and flexibility in mind. Offering approximately 1,225 square feet, this well-appointed space features 4 private offices, ideal for medical, wellness, salon, or professional service uses.

The layout includes a welcoming entry area, providing versatility for reception, or client intake. Additional amenities include a restroom, break room, and storage room, enhancing convenience for both staff and clients.

With excellent street frontage, this property ensures strong visibility. The contemporary design, clean finishes, and thoughtful layout create a polished environment ready to support your operations from day one.



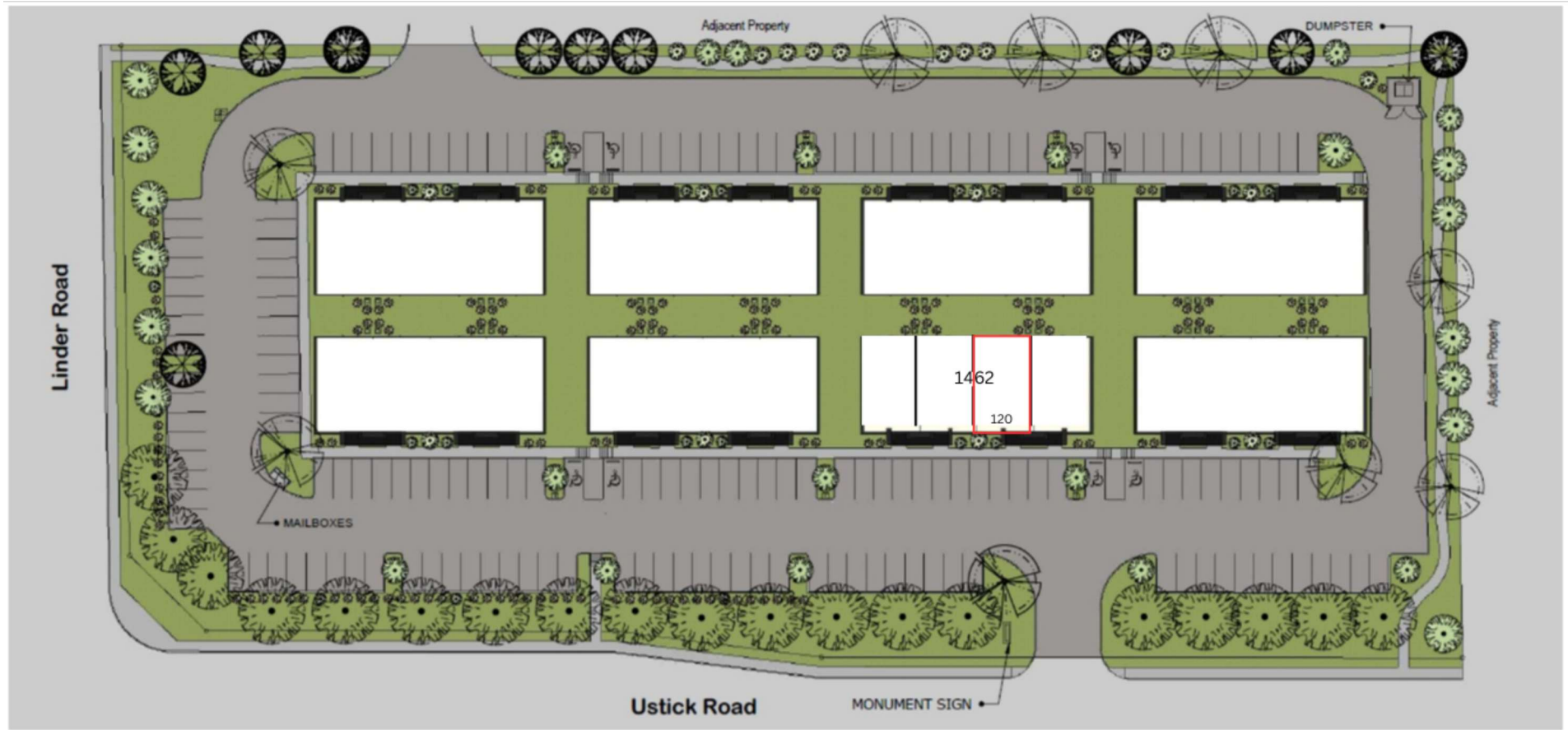
**Jason Knorpp, CCIM**

(208) 283-8121

[jason@commercialidaho.com](mailto:jason@commercialidaho.com)

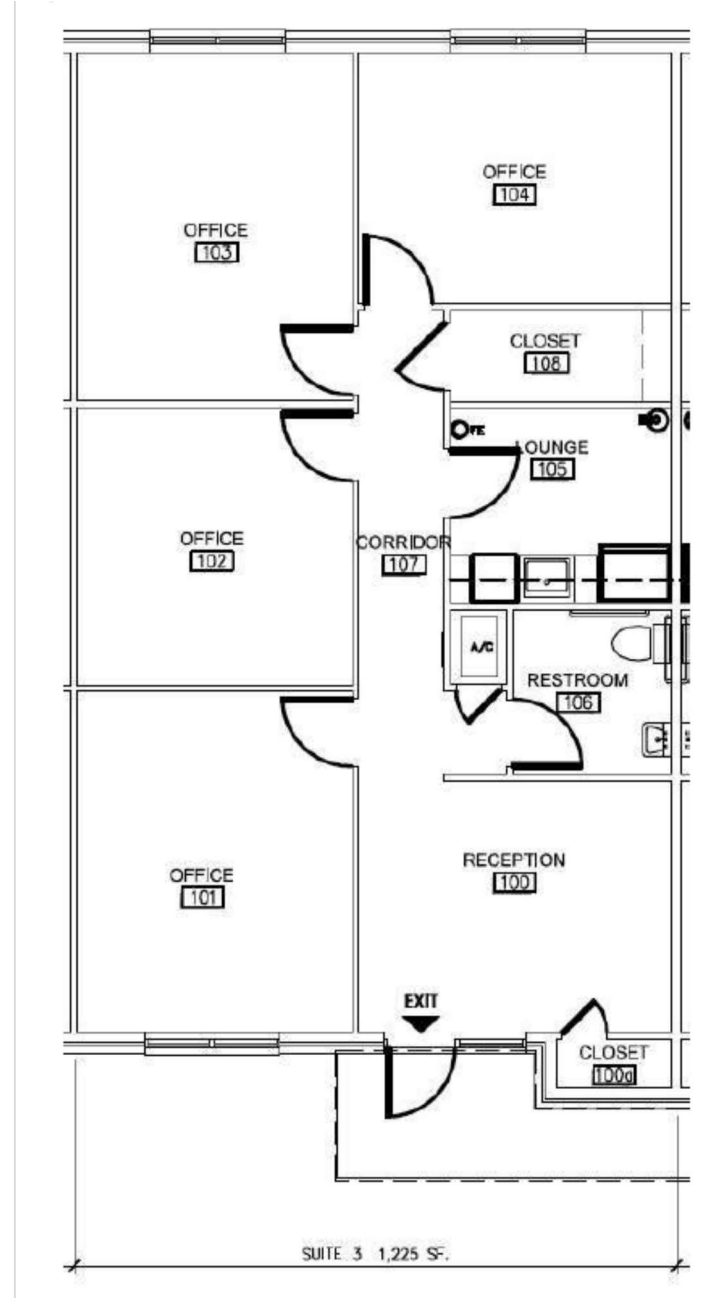
# Available Space

1462 W Ustick Rd. 120



# Floor Plan

1462 W Ustick Rd. 120



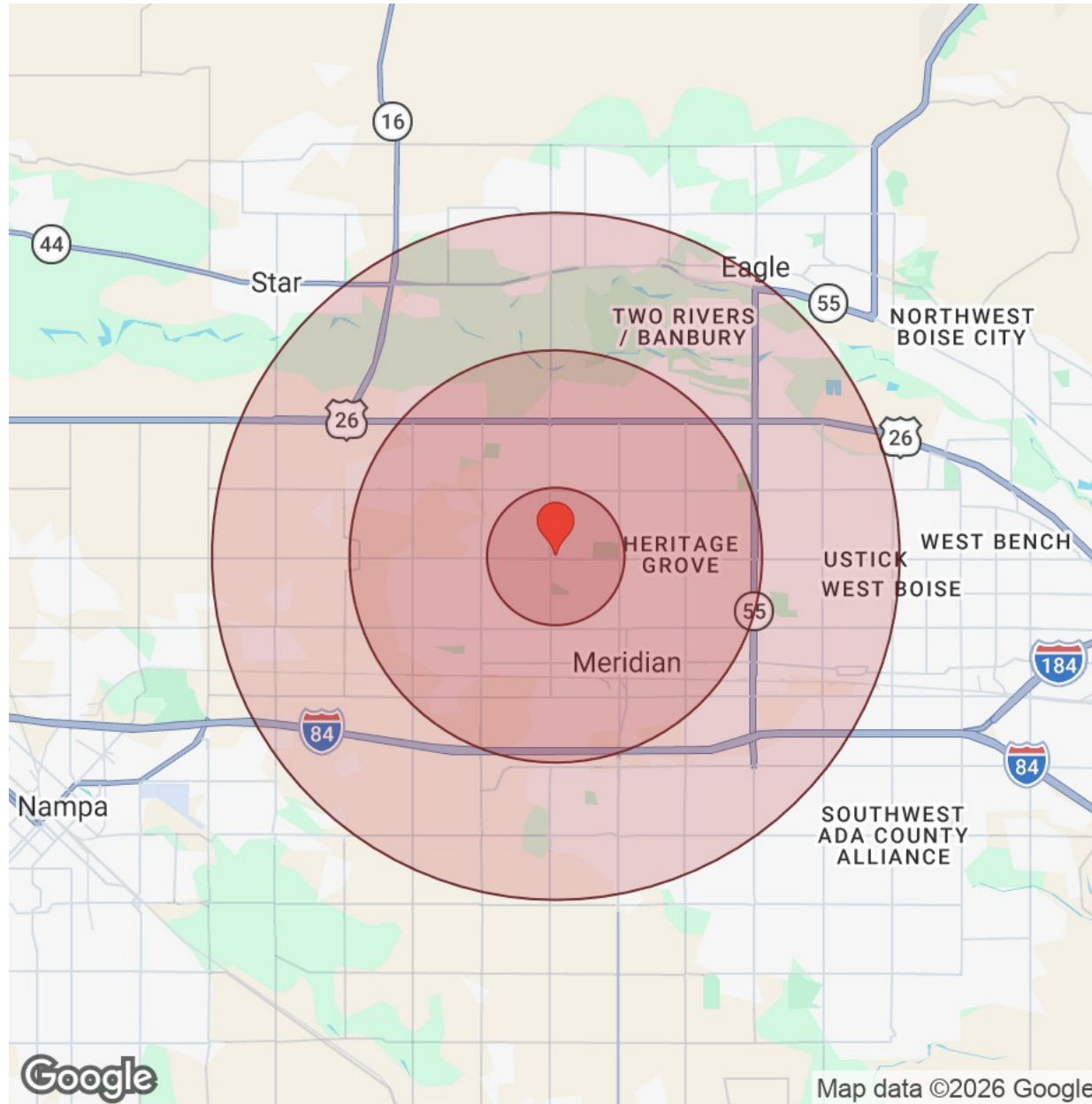
Jason Knorpp, CCIM

(208) 283-8121

jason@commercialidaho.com

# Demographics

1462 W Ustick Rd. 120



Distance: ● 1 Mile ● 3 Miles ● 5 Miles

Population	1 Mile	3 Miles	5 Miles
Male	8,056	49,420	89,130
Female	8,416	50,748	91,348
Total Population	16,472	100,168	180,478

Race / Ethnicity	1 Mile	3 Miles	5 Miles
White	13,522	82,238	147,252
Black	137	1,052	2,364
Am In/AK Nat	33	200	361
Hawaiian	26	140	235
Hispanic	1,898	10,798	19,203
Asian	376	2,935	5,938
Multiracial	458	2,685	4,963
Other	25	110	180

Housing	1 Mile	3 Miles	5 Miles
Total Units	6,040	40,617	74,388
Occupied	5,667	37,786	69,080
Owner Occupied	4,467	26,973	50,013
Renter Occupied	1,200	10,813	19,067
Vacant	373	2,831	5,307

Age	1 Mile	3 Miles	5 Miles
Ages 0 - 14	3,346	19,157	33,304
Ages 15 - 24	2,075	12,909	22,937
Ages 25 - 54	6,975	41,315	72,489
Ages 55 - 64	1,618	10,329	20,050
Ages 65+	2,459	16,458	31,698

Income	1 Mile	3 Miles	5 Miles
Median	\$103,947	\$102,722	\$105,863
Under \$15k	218	1,357	2,360
\$15k - \$25k	214	1,209	2,198
\$25k - \$35k	152	1,363	2,420
\$35k - \$50k	342	2,622	4,679
\$50k - \$75k	969	6,152	10,688
\$75k - \$100k	829	5,603	10,178
\$100k - \$150k	1,265	9,620	15,986
\$150k - \$200k	838	3,875	8,686
Over \$200k	839	5,985	11,887



Map data ©2026 Google

Jason Knorpp, CCIM

(208) 283-8121

jason@commercialidaho.com

# Location Maps

1462 W Ustick Rd. 120

