



BROADBENT BUSINESS PARK

3607 - 3667 WEST 2100 SOUTH SALT LAKE CITY, UTAH

LEASE RATE: \$1.00 PSF NNN



PROPERTY DETAILS

- ✓ (1)10' X 10' Ground Level Door Per Unit
- ✓ Signage Available
- ✓ *3-Phase Available*
- ✓ Monitored Security Surveillance System
- ✓ 5 Minutes to SLC International Airport
- ✓ Quick Access to I-215, I-80 and Bangerter Hwy
- ✓ Temperature Controlled Office & Warehouse
- ✓ Private Office & Restroom in Each Unit

SPACE AVAILABLE

- ✓ 2,426-2,527 Square Feet Available
 - Unit 3618: 2,032 SF
 - Unit 3623: 2,426 SF
 - Unit 3625: 2,527 SF
- ✓ Contiguous Units:
 - 3623 & 3625: 4,953 SF
- ✓ Additional Office & Retail Spaces Available
 - Contact Agent for Details

CONTACT US

DEREK KLOPFER

✉ derek@cresutah.com

☎ 801.897.9264

COLTER SMITH

✉ colter@cresutah.com

☎ 801.755.8794 🌐 www.cresutah.com

Call Us
801.876.6070

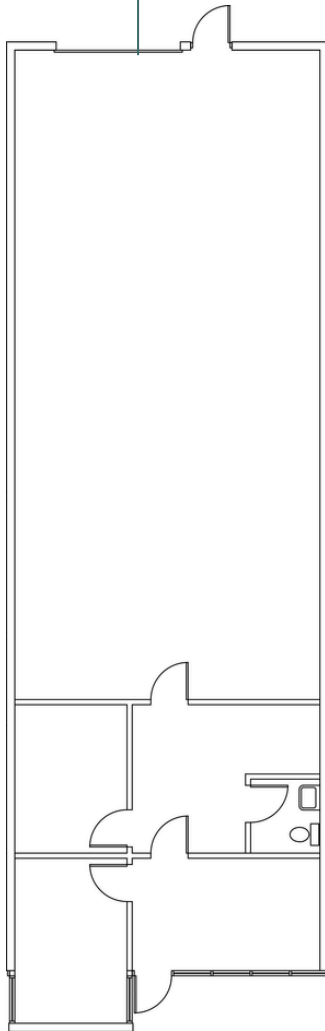




BROADBENT BUSINESS PARK

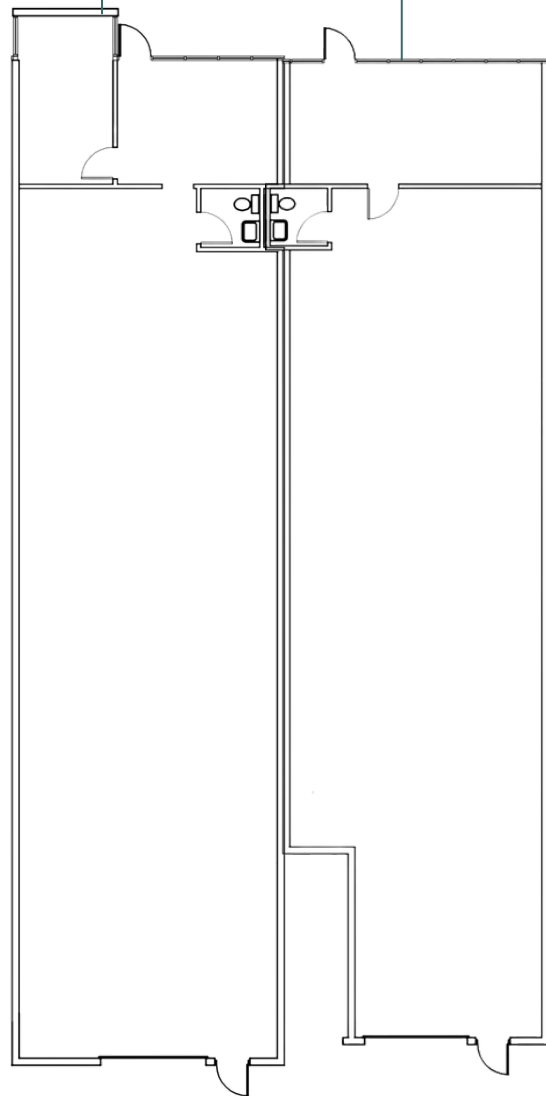
3607 - 3667 WEST 2100 SOUTH SALT LAKE CITY, UTAH

Unit 3614: 2,038 SF



Unit 3623: 2,426 SF

Unit 3625: 2,527 SF



3623 & 3625
Contiguous: 4,953 SF

CONTACT US

DEREK KLOPFER

✉ derek@cresutah.com

☎ 801.897.9264

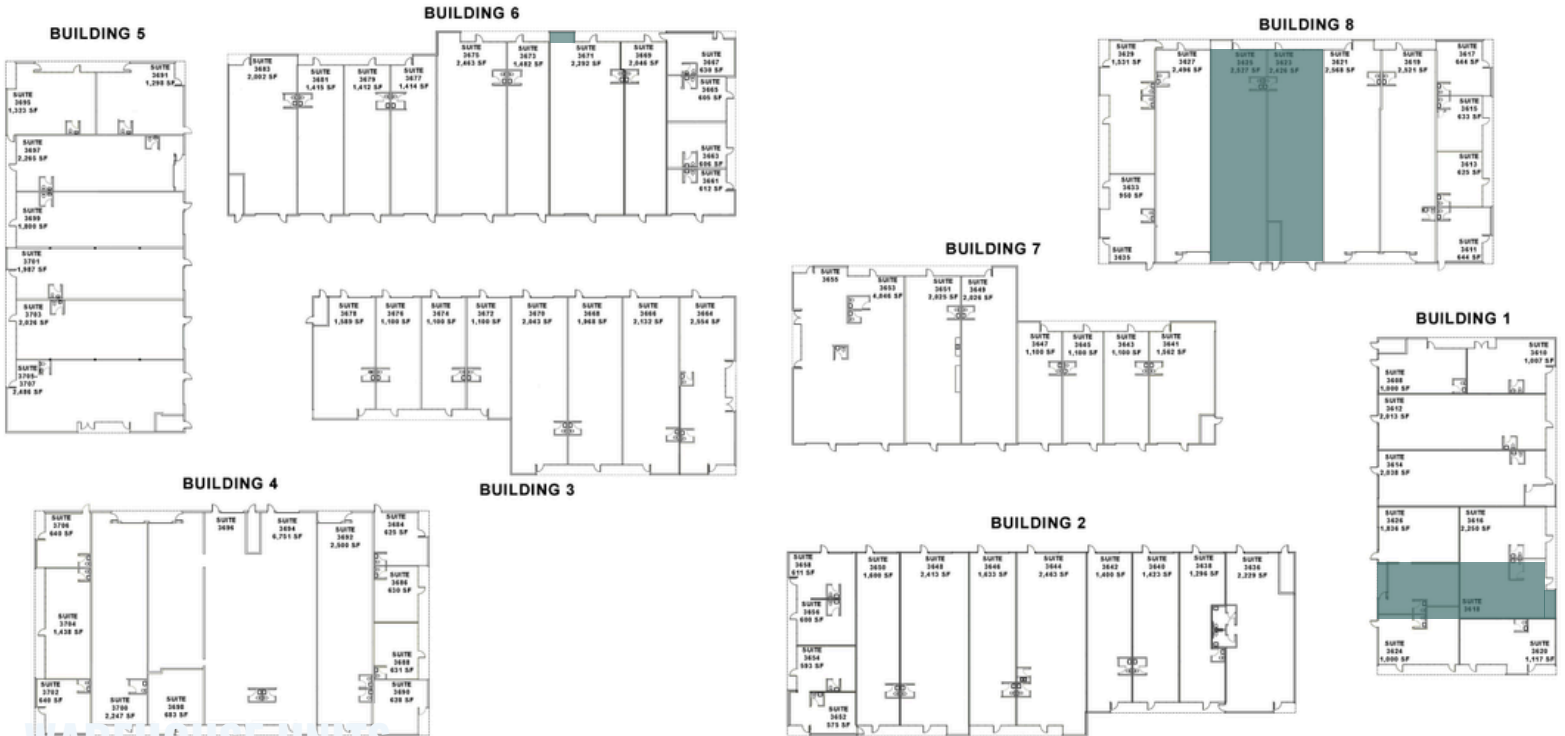
COLTER SMITH

✉ colter@cresutah.com

☎ 801.755.8794

🌐 www.cresutah.com

Call Us
801.876.6070 



WAREHOUSE UNITS

- Building 1
 - Unit 3618: 2,038 SF

- Building 8
 - Unit 3623: 2,426 SF
 - Unit 3625: 2,527 SF
 - Combined: 4,953 SF



This information is given with the understanding that all negotiations and/or real estate activity related to the property described above shall be conducted through this CRES office. The above information while not guaranteed, was obtained from sources we believe to be reliable.

CONTACT US

DEREK KLOPFER

✉ derek@cresutah.com

☎ 801.897.9264

COLTER SMITH

✉ colter@cresutah.com

☎ 801.755.8794

🌐 www.cresutah.com

Call Us
801.876.6070 📞