



Christopher Campbell - LREA: 732989  
M: (737) 219-9132 || E: [chris@chriscampbellre.com](mailto:chris@chriscampbellre.com)  
Realty Executives of San Antonio



Family Care  
Center

103

Phase 2

# WILD PINE BROCHURE

 11207 Wild Pine, San Antonio, TX 78253

2025  
[www.wildpinesa.com](http://www.wildpinesa.com)

# CONTENTS

01 OVERVIEW

02 SITE PLAN

03 AERIAL VIEW

04 ALAMO RANCH

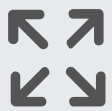
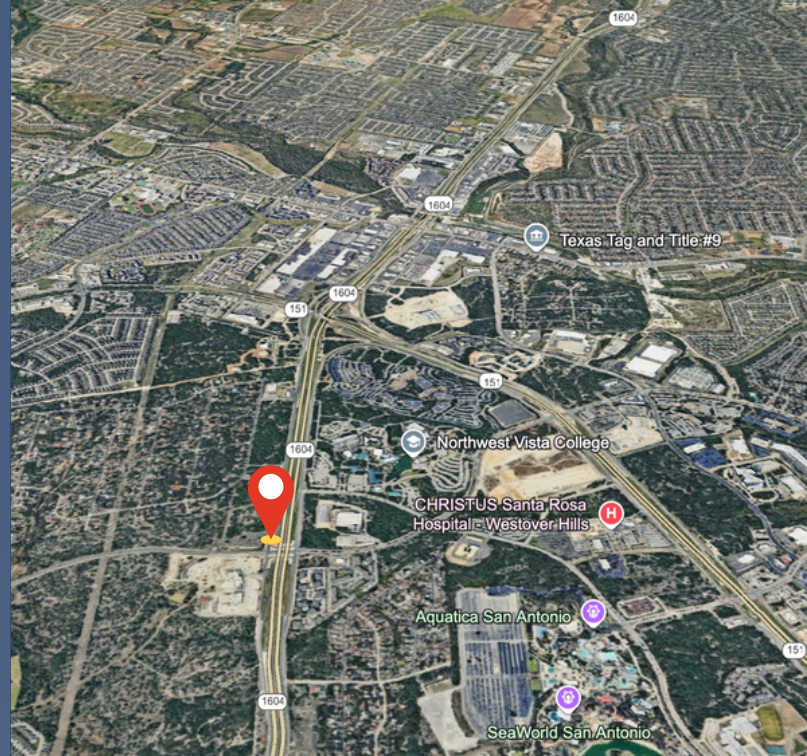
05 CONTACT



Christopher Campbell - LREA: 732989  
M: (737) 219-9132 || E: [chris@chriscampbellre.com](mailto:chris@chriscampbellre.com)  
Realty Executives of San Antonio

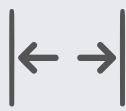
# 01 OVERVIEW

Phase 2 of the Wild Pine development will continue the work initiated in Phase 1, which was completed in late 2022. The building designs will reflect those of Phase 1. Construction is scheduled for completion by late 2025.



## BUILDING SIZE

13,200 SF x 2 (+/-)



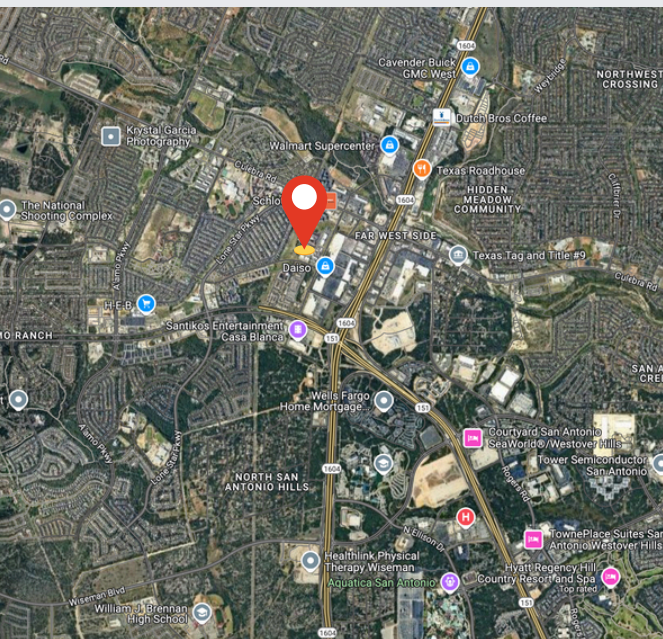
## AVAILABLE SPACE

3,300 SF - 26,400 SF (+/-)



## LOT SIZE

2 AC (+/-)



# For SALE or LEASE

ZONING: OCL - Bexar

UTILITIES: Available to Site

PARKING: 5 | 1000

SPRINKLERED: YES

TRAFFIC: 15,500 VPD (20)

11207 Wild Pine, San Antonio, TX 78253

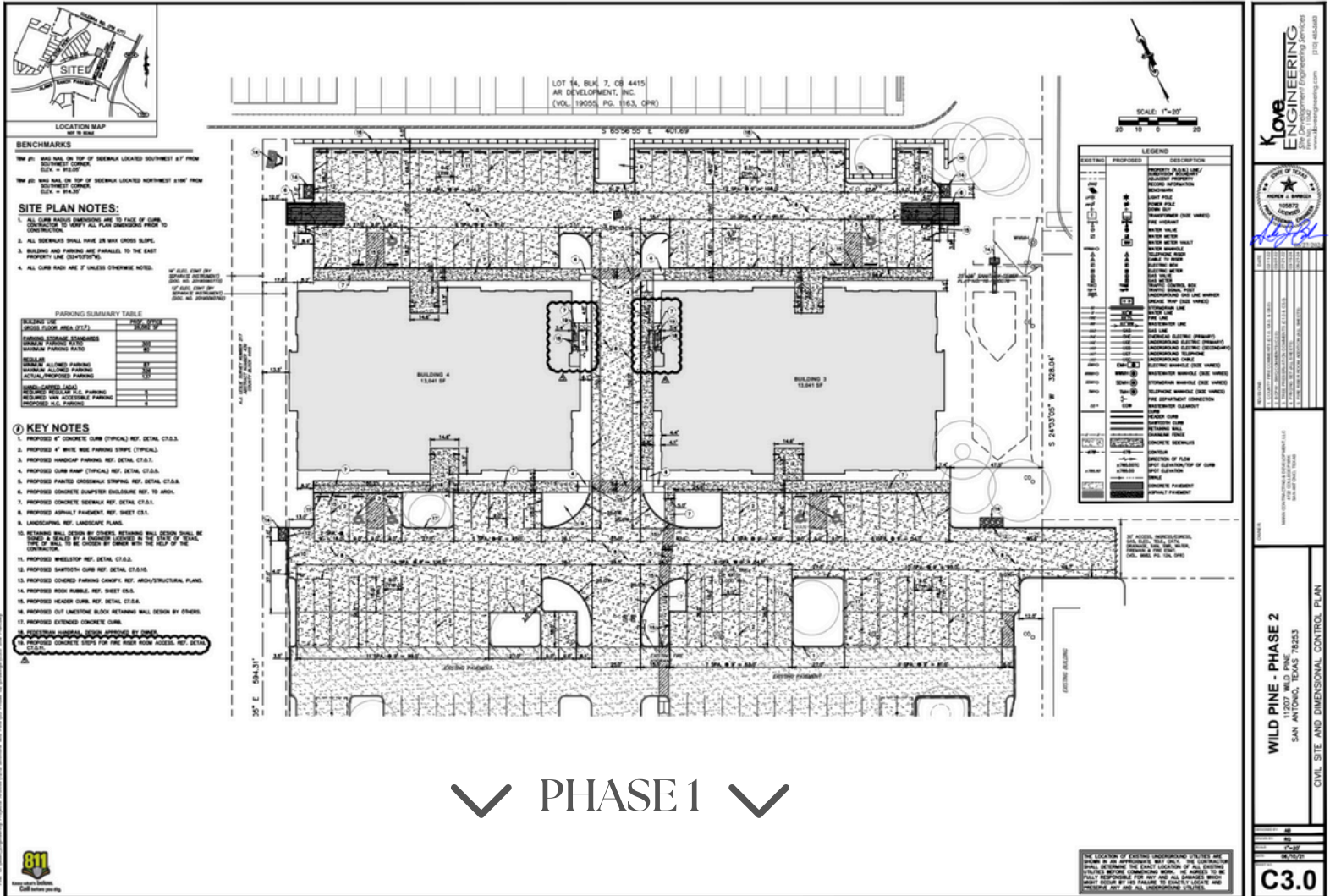
\*\* The information contained in this report is deemed to be accurate but cannot be guaranteed. Seller or Landlord makes no representation as to the environmental condition of the property and recommends purchaser's or tenant's independent investigation. Prospective buyers should retain an independent engineer to verify location, accessibility, and capacity of all utilities.

Christopher Campbell - LREA: 732989

M: (737) 219-9132 || E: [chris@chriscampbellre.com](mailto:chris@chriscampbellre.com)

Realty Executives of San Antonio

# 02 SITE PLAN



## CURRENT TENANTS IN PHASE 1

Staffing Solutions - Building 2

Victoria Realty (EXP) - Building 1

Family Counseling Centers - Building 1

Christopher Campbell - LREA: 732989

M: (737) 219-9132 || E: [chris@chriscampbellre.com](mailto:chris@chriscampbellre.com)

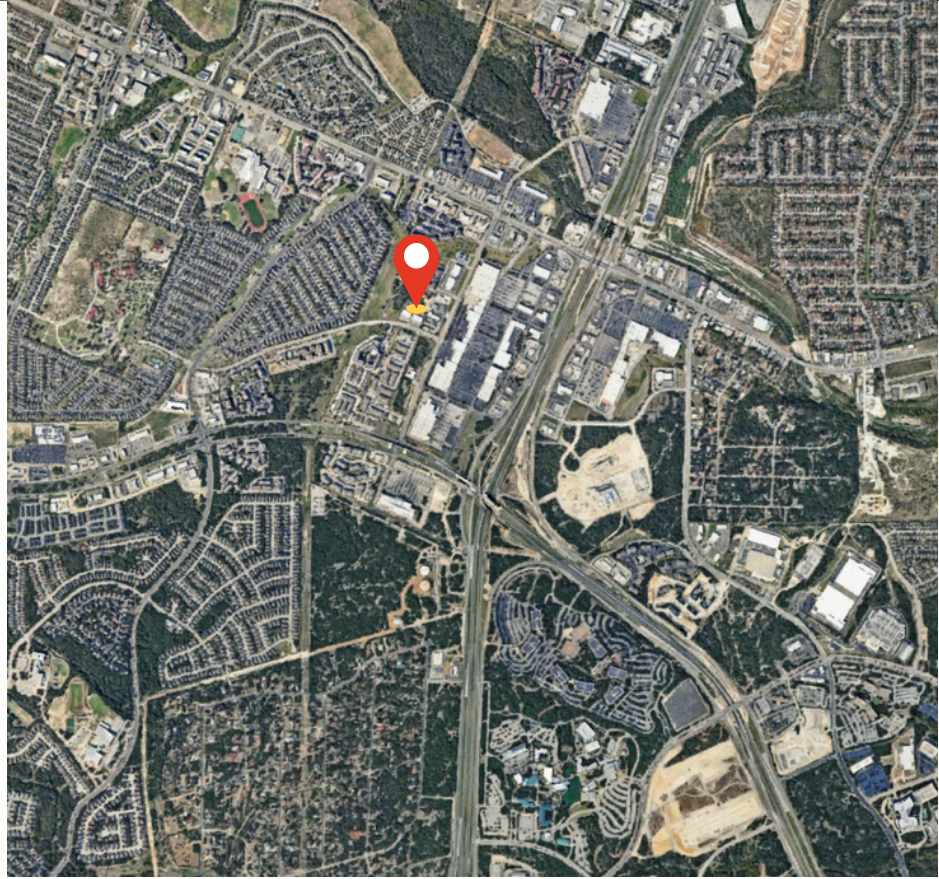
Realty Executives of San Antonio

11207 Wild Pine, San Antonio, TX 78253

# 03 AERIAL VIEW

## SHOPPING

Target  
Marshalls  
Ross Dress For Less  
Michaels  
JCPenney  
Lowe's  
Dick's Sporting Goods  
Best Buy  
Five Below  
HEB  
Home Depot



## FOOD & BEVERAGE

Olive Garden  
Red Robin  
In-N-Out Burger  
Raising Cane's  
Las Palapas  
Smashin Crab  
Bill Miller  
Jim's Restaurants  
Kneaders Bakery  
Mama Margie's

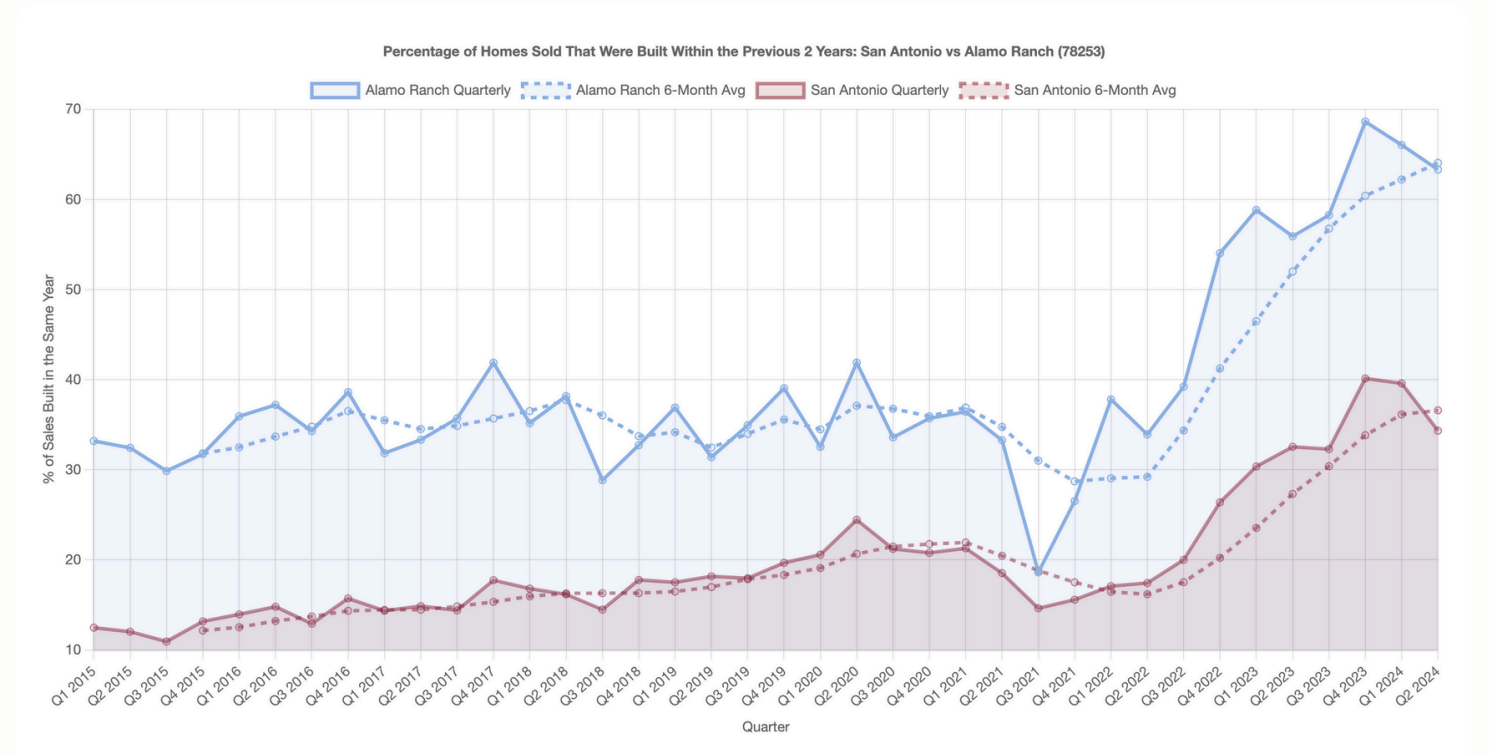
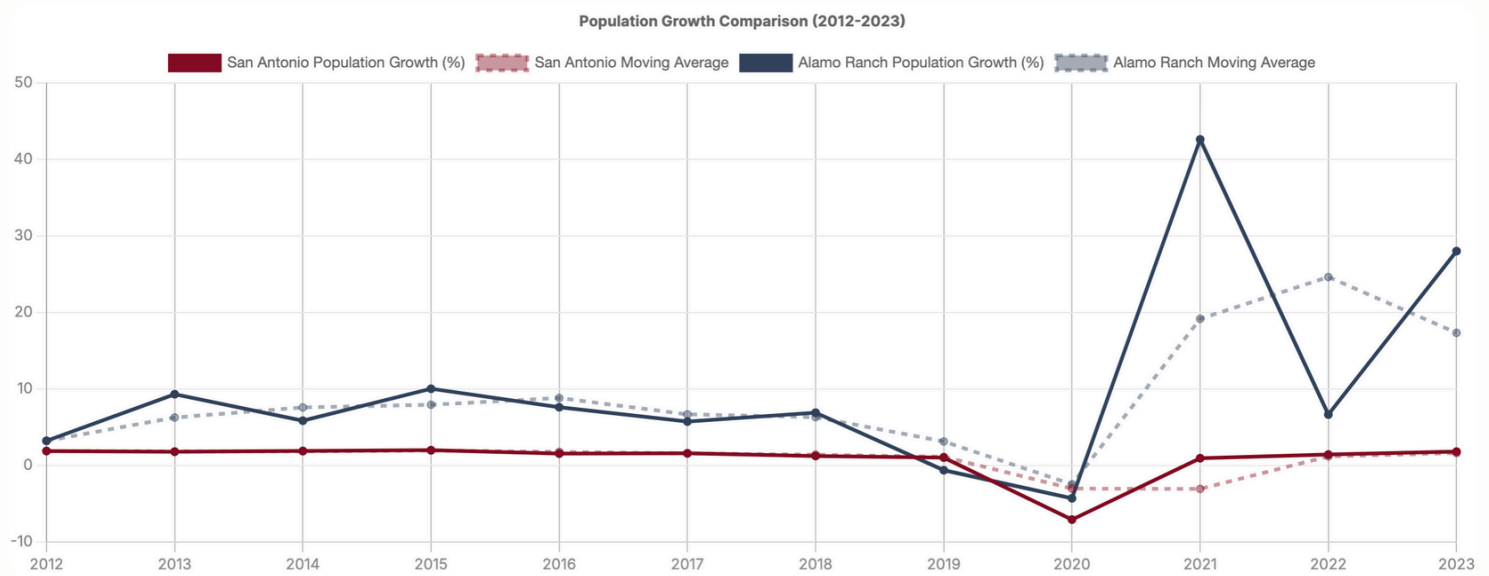
## HEALTH AND FITNESS

CVS Pharmacy  
Anytime Fitness  
Texas MedClinic  
Primway Medical, PLLC  
Fast Aid Urgent Care  
CommuniCare Health Centers  
Mercy Wellness Clinic

# Q4 ALAMO RANCH

The fastest-growing area in San Antonio

Alamo Ranch (78253) is the leading area for population and new housing growth in the city.



SOURCES: SABOR MLS, US Census Data, US Census American Community Survey via Esri, SABOR MLS


11207 Wild Pine, San Antonio, TX 78253

Christopher Campbell - LREA: 732989  
 M: (737) 219-9132 || E: [chris@chriscampbellre.com](mailto:chris@chriscampbellre.com)  
 Realty Executives of San Antonio

# 05 CONTACT



CHRISTOPHER CAMPBELL || 732989

 (737) 219-9132

 [chris@chriscampbellre.com](mailto:chris@chriscampbellre.com)

 13333 Old Blanco Rd, #210, San Antonio, TX 78216



REALTY EXECUTIVES OF SAN ANTONIO